

270 Degree 7-in-1 Wired Gaming
Steering Wheel

Instructions for use of the
product

catalogs

I. Product	profile3
1.1 Product parameters and	specifications3
1.2 Functional	description4
Second, product links to various platforms tutorial	6
2.1 270 steering wheel linking computer steps:	6
2.2 270 Steering Wheel Function	Test8
2.3 270 Steering Wheel Link SWITCH Step	1 0
2.4 270 Steering Wheel Link PS3 Step	1 2
2.5 270 Steering Wheel Linking Android Devices Step	1 2
2.6 270 Connected to PS4/Xbox one/Xbox	3601 3
Third, 270 added link platform use	
instructions14 IV. 270 Degree
Linking XBOXONE, PS4, xbox360 Notes14

I. Product Profile

This is a multifunctional 270-degree steering wheel that automatically recognizes SWITCH/PC/PS3/Android platforms on power-up; and

And each platform has a different color LED indication.

Link the foot pedal's USB to the USB socket on the back of the steering wheel before use; the steering wheel automatically calibrates the foot pedal after linking the game console.

PC default Xinput mode, long press the PS button for 3 seconds can be switched to Dinput mode, the indicator green light for dinput mode, blue light for xinput mode (to game support which control mode to switch the corresponding control mode control can be).

This steering wheel features 270 degree steering and is compatible with PS3 / PS4 / XBOX ONE / XBOX360 / PC / NS SWITCH / Android devices. When connecting to PS3 / PC / NS SWITCH / Android devices, you can plug and play without guidance. When connecting PS4 / XBOX ONE / XBOX360 devices, bootstrapping is required. To do so, connect the USB of the PS4 / XBOX ONE / XBOX360 controller to the controller port on the back of the steering wheel. You can also select any level of sensitivity from 1 to 7 as required, the default sensitivity is 4.

1.1 Product parameters and specifications

270 degree turn to 135 degrees left and right

270 degree steering wheel length: 34CM, width is 26CM, height is 25CM (with the disk diameter)

270 degree steering wheel cable length: 1.8 meters Pedal cable length: 1.5 meters

The pedals are the gas (right) as well as the brake (left)

Gear lever and steering wheel integrated, gear mode forward push for plus, gear back push for minus



1.2 Introduction to Functions



Function Key Description: Each key may have a different function in a different game. Each key can be changed or assigned within the settings screen of each software game.

1. **LS: Function key:** Realizes different functions in different games. LS key: the number 9, which corresponds to the L3 key on the controller.
2. **RS: Function key:** Realizes different functions in different games. RS key: the number 10, which corresponds to the R3 key on the controller.
3. **LT: Function key:** In-game braking function. LT key: corresponds to the Z-axis (L2)

on the controller.

4. **RT: Function key:** Throttle function in the game. RT key: corresponds to the Z-axis (R2) on the controller.

5. **Directional control keys**

6. **Action keys:** A / B / X / Y control keys, perform different functions according to different games (Cross / Circle / Box / Triangle).

7. **SELECT:** Select key, key 7 on the controller, selects the key function.

8. **Start:** Start/Pause button.

9. **PS key:** XInput mode and Directinput mode switching key, for PC use only. After power on, the default is XInput mode. In XInput mode, the green light on the steering wheel is on. When the red light on the steering wheel is on, it is in DirectInput mode. Switching between the two modes does not require a reboot, just press the PS button for 3 seconds to complete the switch; when using PS3 / PS4 / XBOX360 / XBOX One platform, this key is the menu key.

10. **SEN key: Sensitivity** setting key. The steering wheel has a total of 7 levels of sensitivity, the value defaults to level 4; each level of sensitivity corresponds to a different color light. They are (green (level 1), green + red (level 2), red (level 3), red + blue (level 4), blue (level 5), blue + green (level 6), green + red + blue (level 7). The setting method is as follows: Press SEN key for 2 seconds to enter the sensitivity adjustment, the LED blinks to indicate that it has entered the sensitivity adjustment program. Press the up direction control key to increase the sensitivity; press the down direction control key to decrease the sensitivity. After setting the sensitivity, you need to press SEN to exit the sensitivity adjustment program, at this time the LED will stop flashing.

11. **LED indicators.**

12. **Gear lever:** up and down gears.

13. **Pedal USB port.**

14. **Original controller USB port** (connect PS4 / XBOX360 / XBOX controller). For example: to play PS4 games, you need to plug the original PS4 controller into this port; to play

Xbox One racing games, you need to plug the original Xbox One controller into this port.

15. **Gas pedal.**

16. **Brake pedal.**

17. **fixture:** twist the screw on the upper end of the left and right fixture to loosen the fixture adjusted to the thickness of the appropriate table, fixed to the table and then twist the screw (suitable for 50mm within the table), if the table's thickness is more than 30mm need to remove the fixture at the low end of the small square plastic buckle (with the tool can be knocked off the word screwdriver).

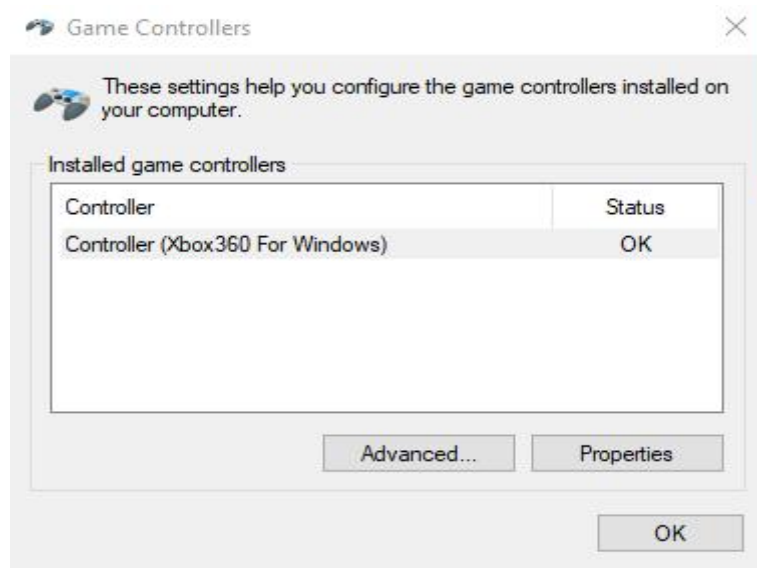
Second, **product links to various platforms tutorial**

2.1 270 Linking Computer Steps:

First connect the foot pedal to the USB hole on the back of the steering wheel, then connect the steering wheel USB master cable to the PC host.






After the link is successful, the system will automatically recognize it as "Controller (Xbox360 For Windows)". Then open "My Computer" → "Control Panel" → "Game Controllers" (or "Game Options"). After opening, you can see the controller inside the controller under the display "Controller (Xbox360 For Windows)" state "OK" (Figure 1). This shows that the steering wheel has been connected to the computer above, can be used normally (if not shown try to install the 360 driver).

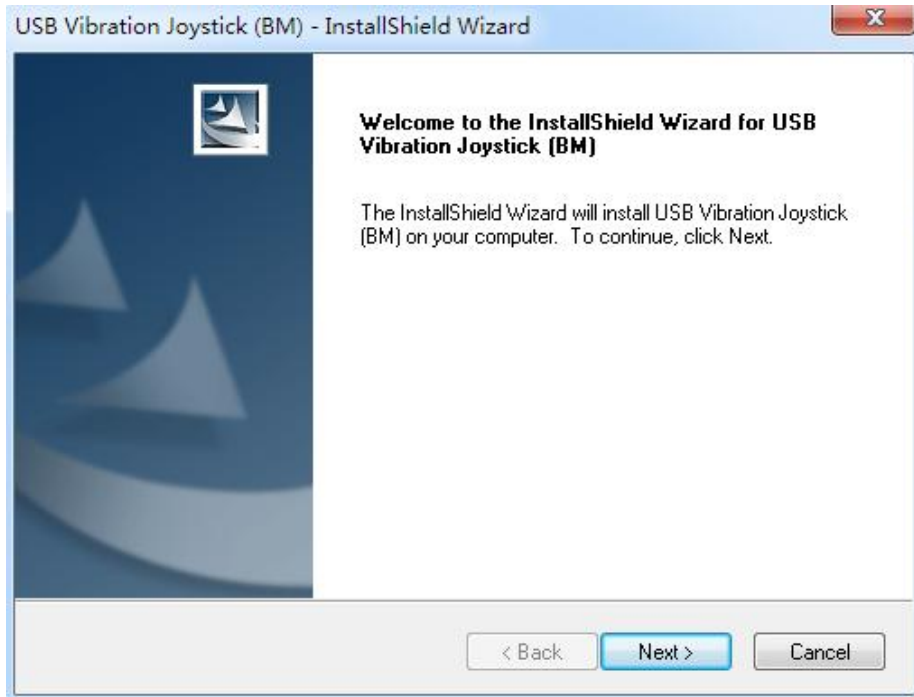


Install the driver method:

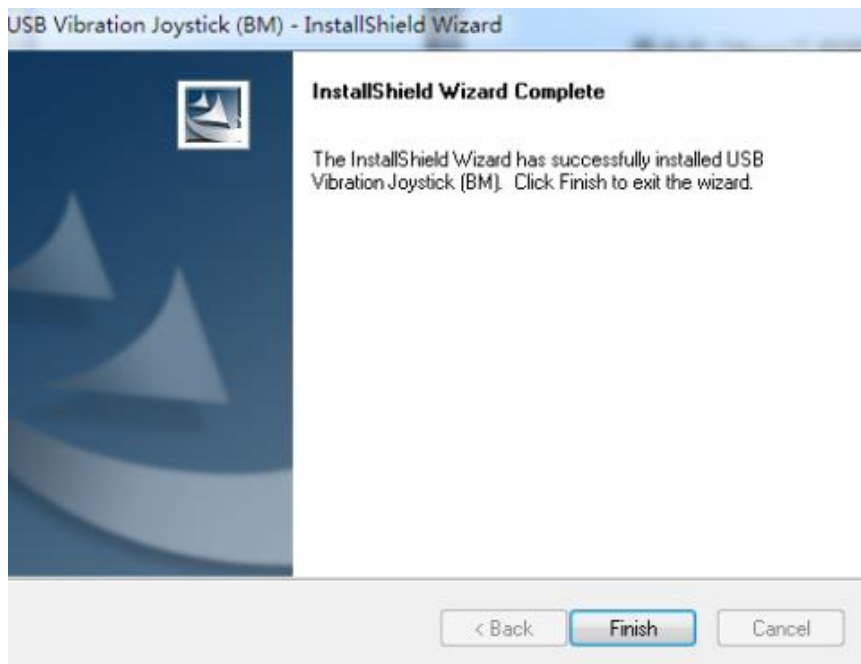
Please download the driver first: driver address download complete unzip, there are three drivers inside the folder, according to their own computer host configuration to install the driver, the computer host is a 64-bit system, install xbox360-64-bit driver; computer host is a 32-bit on the installation of the xbox360-32-bit driver; installed in the installation of the BM-575S driver.

 BM-575S	2014/3/20 23:00	应用程序	2,581 KB
 xbox360-32位	2011/5/5 13:34	应用程序	7,339 KB
 xbox360-64位	2009/10/17 19:10	应用程序	7,681 KB

2, after the steering wheel and the computer is connected, install the files in the driver package after downloading, the three files in the package are BM-575S and XBOX360-32 bit, XBOX360-64 bit. BM-575S is the Directinput mode driver, XBOX360-32 bit, XBOX360-64 bit is the Xinput mode driver. These two drivers can be installed on the computer at the same time, and we can choose the mode according to the game we play. Let's install the BM-575S driver first, double-click the left mouse button BM-575S file package appears in the following picture prompted to click "Next" next. (Note: Some computers have game controllers in printers and devices)



Click "Finish" to complete the installation after the driver is automatically



installed.

2.2 Functional testing

After the driver is installed, long press PS to switch to Directinput mode, go to "My Computer" → "Control Panel" → "Game Controller" (or "Game Options"), open the interface after the new driver name "USB Vibration Joystick" indicates that the driver has been successfully installed in Directinput mode. "Game Options", after opening the interface, such as a new driver name "USB Vibration Joystick" indicates

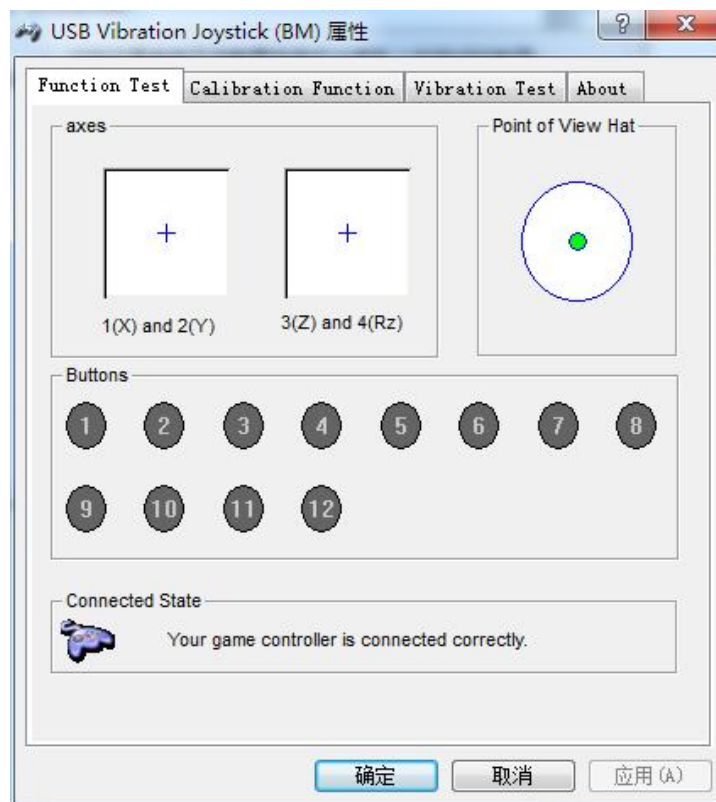
that the driver has been successfully installed in Directinput mode, and then click the following "Properties" to enter the properties test page.



Figure 5

2、Key test

Test the functions in the interface, press any key to light up and turn off after releasing.



3. Rocker calibration

In this interface you can see the interface as shown in the picture, here you can test the wheel accuracy of the steering wheel and adjust the initial position

of the wheel. If the wheel appears to deviate, you can tap "Default" here to restore it, so that the joystick will return to its initial state.

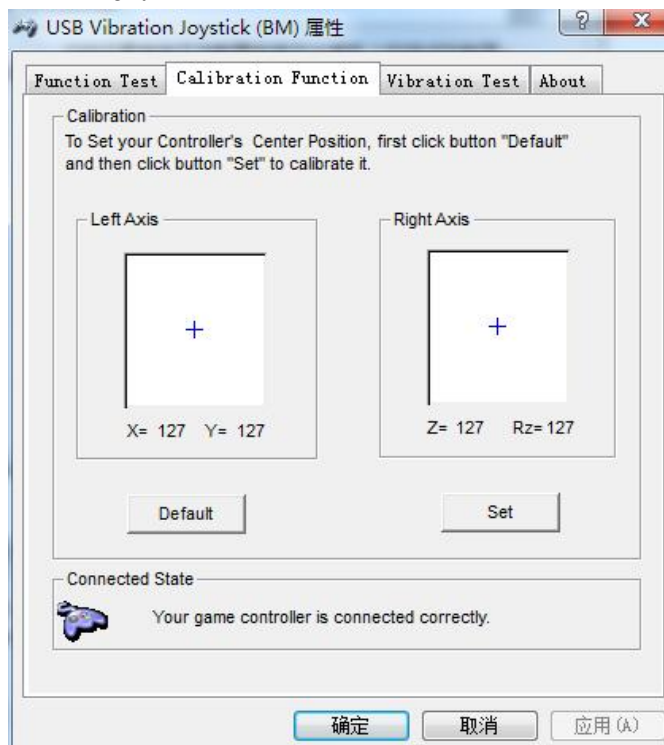
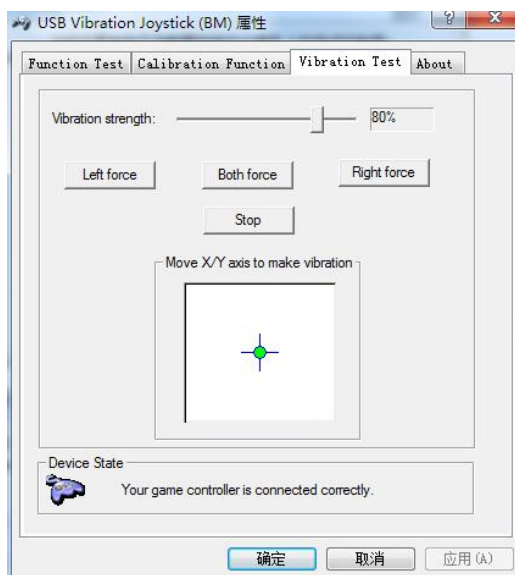


Figure 7

3. Vibration test

In this page, you can test the vibration function of the steering wheel; you can also adjust the intensity of your steering wheel vibration by clicking on the Leftforce or Bothforce vibration effect!



4、Install the driver in Xinput mode, before installing, check your computer is a 32-bit system or 64-bit system, right-click on the desktop "computer" can view the system; according to the system to install the file package corresponding to the 64-bit or 32-bit file package. Example: Click XBOX360-32 bit package (Figure 9),

type "√" in the red box and click "Next", the driver will be installed by itself.

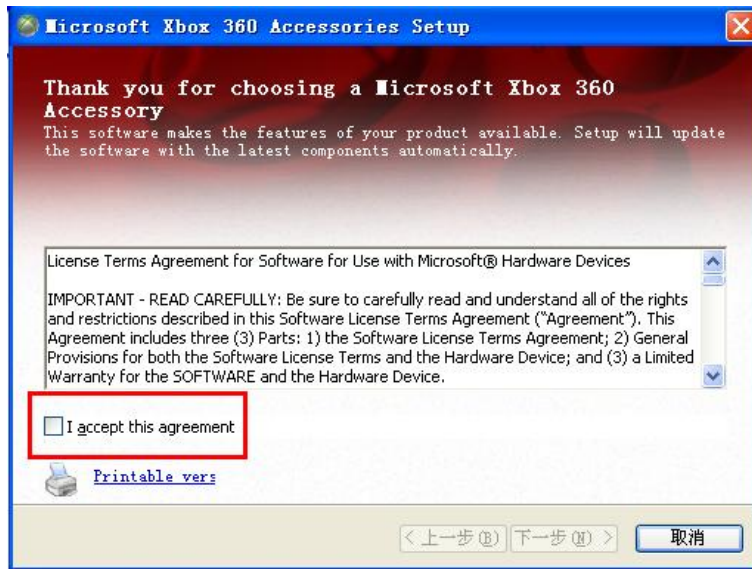


Figure 9

Click "Finish" to complete the driver installation. (Figure 10)

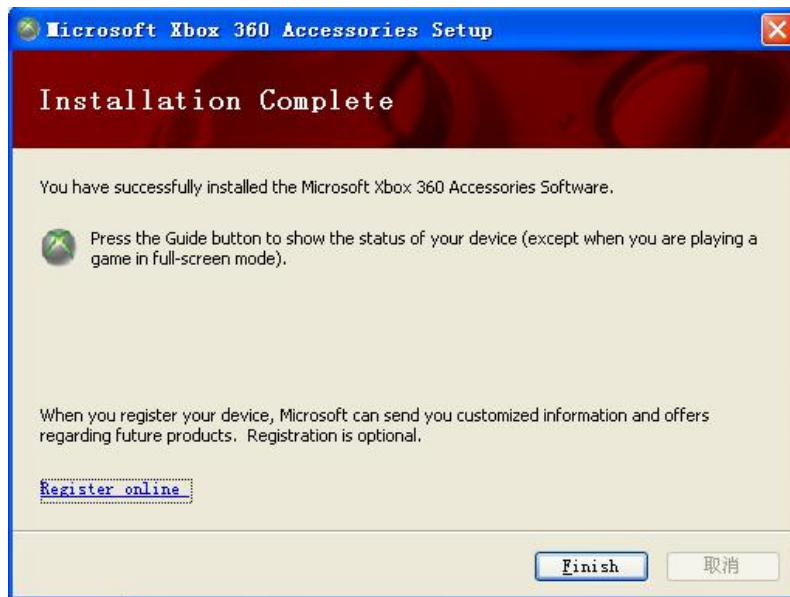
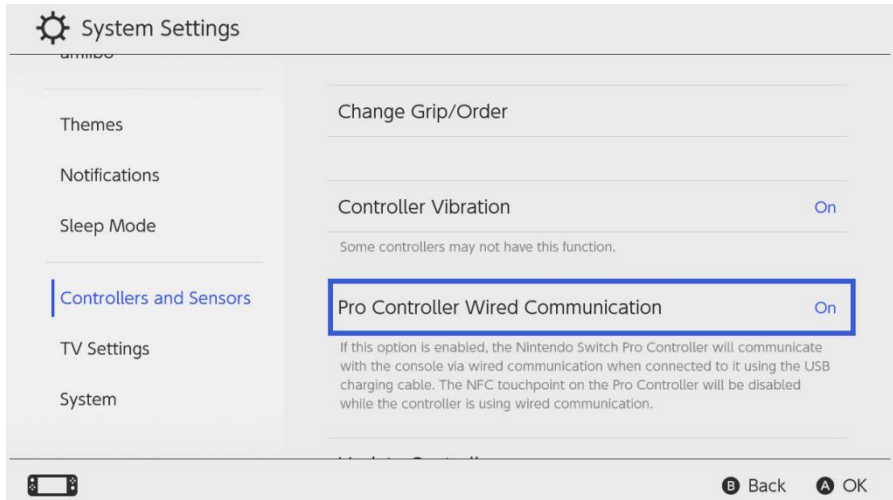


Figure 10

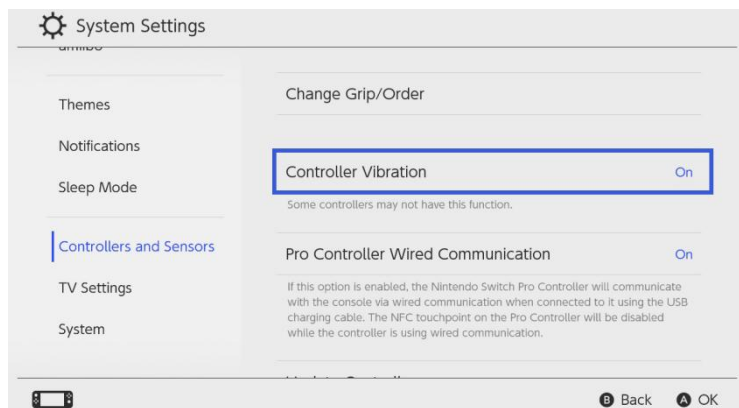
After the installation of the two drivers is completed, we can switch between Directinput and Xinput modes by long-pressing the PS button for about 3 seconds (depending on the control mode of the game itself to switch the control mode of the tangent to play the game).

2.3 270 Steering Wheel Link SWITCH Steps

Before connecting the SWITCH steering wheel to the host computer, you need to turn on the wired connection of the host computer and turn it to ON, see the picture below.



Turn on the vibration function of SWITCH host, select the vibration switch to "on" status in the following figure of SWITCH host settings; after turning on the vibration function, the steering wheel will have the vibration function only in the process of the game.



First link the USB link from the foot pedals to the USB location on the back of the steering wheel that identifies the pedals, then connect the USB cable from the steering wheel body to the USB port with the SWITCH holder



2.4 270 Connecting to the PS3 console

First link the foot pedal USB to the USB location on the back of the steering wheel that identifies the pedal, then connect the steering wheel USB main cable to the USB port on the PS3 console.



2.5 270 Steering Wheel Connection for Android Devices

First of all, please make sure that the Android device you are using supports external controllers and has a USB socket.

Connect the USB cable on top of the pedals to the USB port on the back of the steering wheel, then connect the main steering wheel cable to the USB socket on your Android device.



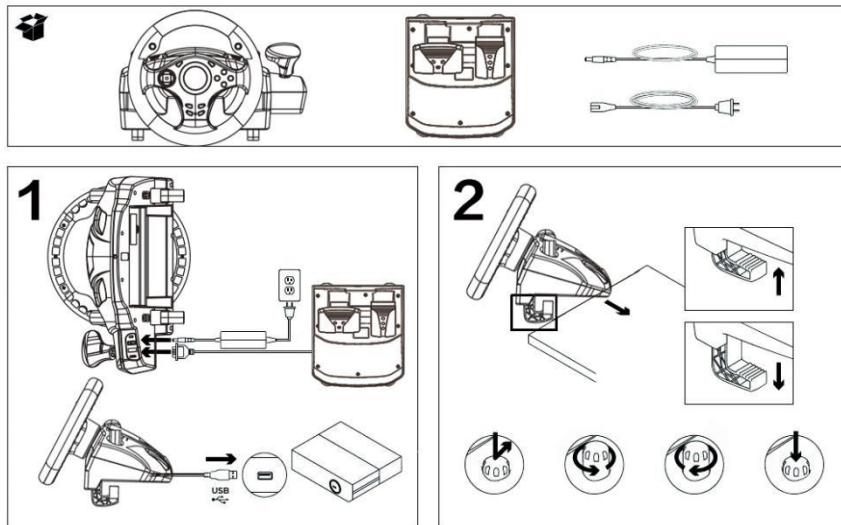
PS4 / XBOX ONE / XBOX360连接示意图

(注意: 其他平台直接连接无需手柄进行引导)



2.6 270 Connection to PS4/Xbox one/Xbox 360

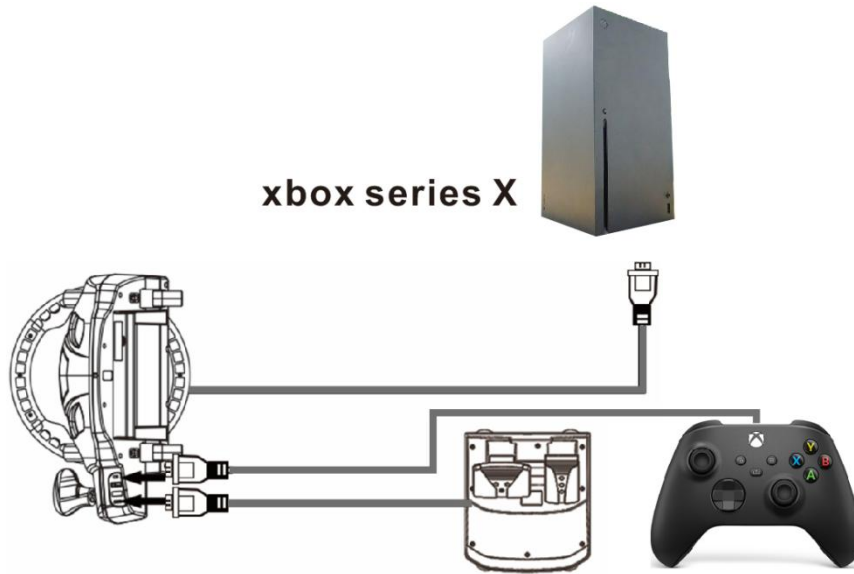
Steering wheel mounting/connection diagram



Connect the steering wheel USB to the gaming device. Connect the pedal USB to the corresponding port on the back of the steering wheel. Connect the original joystick to the corresponding port on the back of the steering wheel. If the connection is successful, the LED on the steering wheel lights up.

III. Instructions for the use of the 270 additional platforms

- 1、Supported platforms add xbox series X platform.
- 2、Connect the xbox series X controller to the USB port on the back of the steering wheel with the controller icon via a Type-c cable, and after connecting the controller connect the USB cable from the foot pedal to the USB port on the steering wheel corresponding to the pedal icon.
- 3、Connect the USB cable from the steering wheel to the USB socket of the xbox series X console.
- 4、Note: The handle can not be turned on when connected to the steering wheel, the handle must be off or remove the handle's battery in advance; otherwise the connection will fail.
- 5、After successful connection, the white light of the handle is always on, and the steering wheel lights up purple.



Four, 270 degrees link XBOXONE, PS4, xbox360 notes

Steering wheel connected to XBOX-one controller use warning!

1. Steering wheel connected to gamepad warning.

First of all the steering wheel connected to the XBOX-one handle before, you must first remove the handle in the battery, handle battery removal and then the handle and steering wheel through the MICRO cable connection up, after the handle is connected to a good, and then the steering wheel USB cable connected to the XBOX-one host.

How to connect the steering wheel to the XBOX-one controller (Micro cable)



Remove the handle battery before connecting the steering wheel to the handle, the handle light is always on after successful connection, and the steering wheel lights up purple.

Steering Wheel Connected PS4 Controller Use

Warning!

1, Steering wheel connected to the game Gamepad Warning.

Steering wheel in connection with the PS4 controller before the handle must be in the off state, and then the handle and the steering wheel through the MICRO cable connection up, after the handle is connected, and then the steering wheel USB cable connected to the PS4 host; connected successfully after the handle's blue indicator light. (If the orange light is on after successful connection, please press PS button to wake up the joystick, the joystick must be in the blue light state after connecting the steering wheel for the steering wheel to work properly)

The correct way to connect the steering wheel to the PS4 controller (Micro cable)



Before the steering wheel connects to the handle the handle indicator is off, after the connection is successful the handle lights up blue and the steering wheel also lights up blue.

Steering wheel incorrectly attached handle (Micro cable)



Steering Wheel Connection Handle Before Handle Indicator is lit state will be a failed connection.

Note: The handle must be connected to the steering wheel in the off state to use the steering wheel properly.

Steering Wheel Connected XBOX360 Controller

Use Warning!

1、Steering Wheel Connection Game Gamepad Warning.

The steering wheel must be connected to a wired original XBOX360 controller in order to use the steering wheel properly; if you use a wireless XBOX360 controller to connect the steering wheel, the steering wheel will not work properly. (Please

use the original wired XBOX360 controller to connect the steering wheel)

Normal connection: steering wheel to wired XBOX 360 controller



The correct operation is that the steering wheel is connected to the wired XBOX360 controller, and when the connection is successful the steering wheel lights up green and the XBOX360 controller lights up the first light.

Wrong connection: steering wheel connected to a wireless XBOX 360 controller



Steering wheel connection to a wireless XBOX360 controller will cause the steering wheel to not work.

Note: The steering wheel must be connected to a wired XBOX360 controller for the steering wheel to work properly.