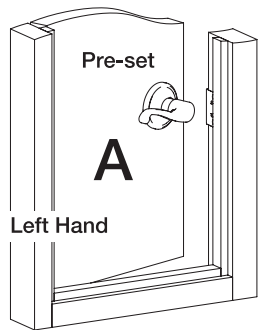


Lever handles are pre-set for doors with left-handed orientation (Illustration A). The right-handed orientation of the lever handle is shown in (Illustration B). If it is necessary to reverse the orientation of the lever handle, follow the instructions below.

Questions? Call 1-800-562-5625 for help.

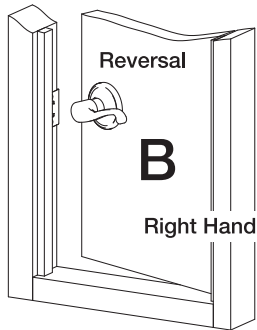


Pre-set orientation of lever handle:

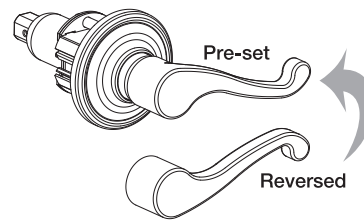


Door shown is inswinging

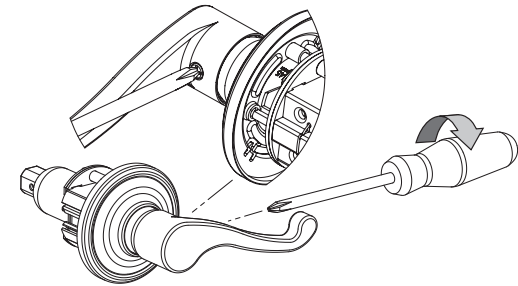
Reverse orientation of lever handle:



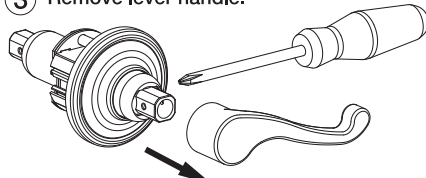
① Lever Reversal



② Loosen screw holding lever but do not remove screw completely.

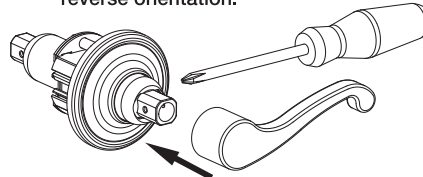


③ Remove lever handle.

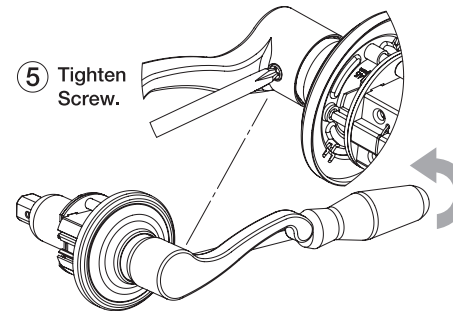


The removed lever will be used on the inside of the door. See step 7 of the installation instructions.

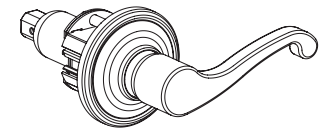
④ Switch lever handle to reverse orientation.



⑤ Tighten Screw.



⑥ Main lock body is now set for a right hand door.



**QUESTIONS? CALL 1-800-562-5625 FOR HELP.**