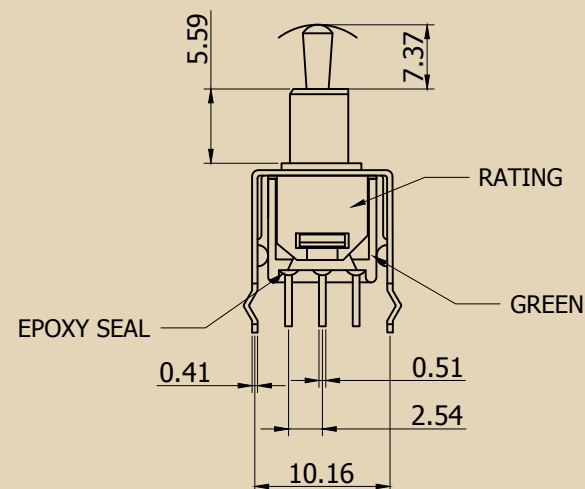
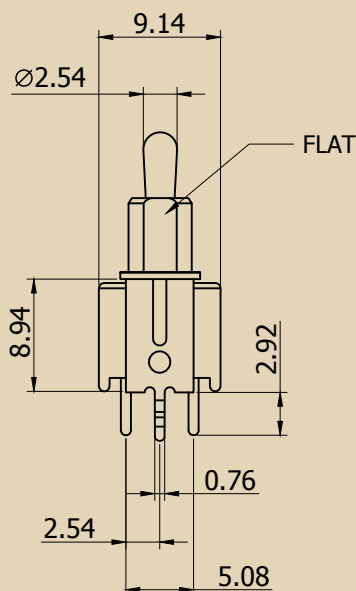
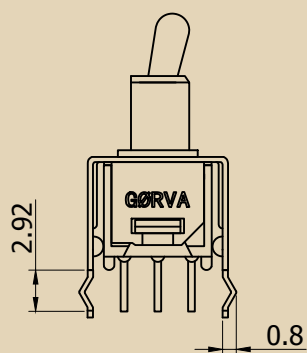


DIMENSIONS

Unit = mm

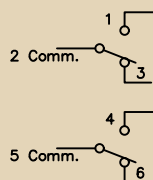


FUNCTION



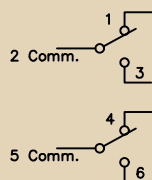
Position 1 - ON

2-3, 5-6



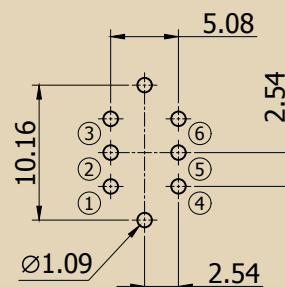
Position 2 - ON

2-1, 5-4

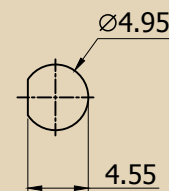


MOUNTING

Unit = mm



PCB MOUNTING



PANEL DRILLING

MATERIALS

Case: Diallyl Phthalate (DAP) (UL94V-0)

Actuator: Chrome plated brass

Bushing: Chrome plated zinc

Housing: Stainless steel

Switch support: Tin plated brass

Contact terminals: Silver plated copper alloy

SPECIFICATIONS

Mechanical Life: 30,000 make-and-break cycles

Contact Resistance: 20mΩ max. Initial @ 2-4VDC

100mA for both silver and gold plated contacts

Insulation Resistance: 1,000MΩ min.

Dielectric Strength: 1,000 Vrms min. @ sea level

Operating Temperature: -40°C to 85°C

BASCULER

Model BSM-DPDT-1-1

Medium Shaft Length Sub Mini
Double Pole Double Throw (on-on)

GØRVA

design

Premium Effect Pedal Parts

Made in Taiwan

RoHS Compliant & Lead-Free