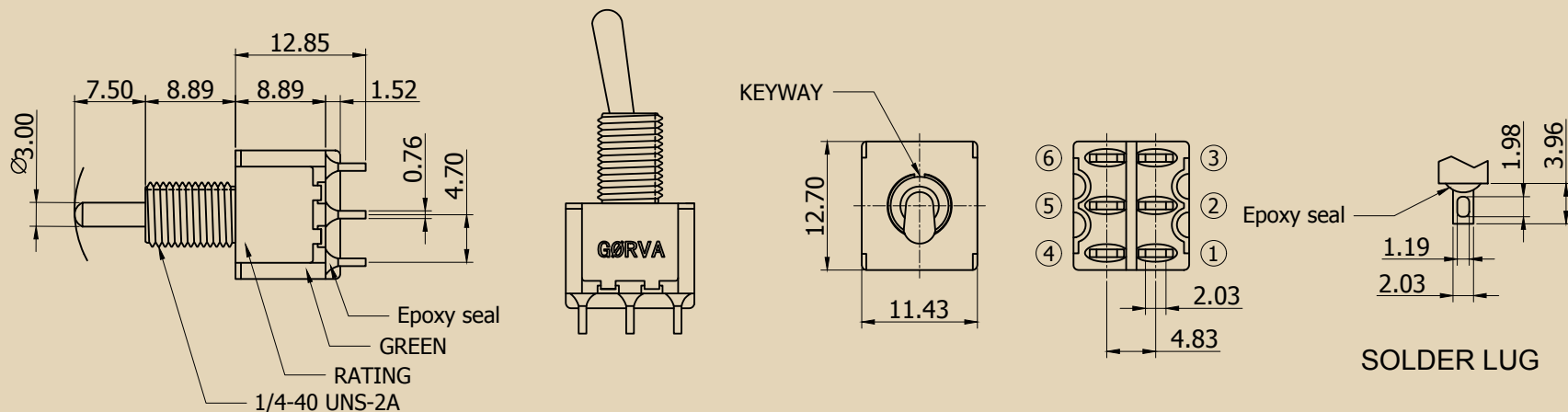


# DIMENSIONS

Unit = mm

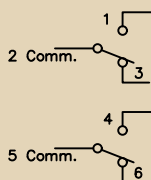


# FUNCTION



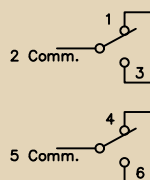
Position 1 - ON

2-3, 5-6



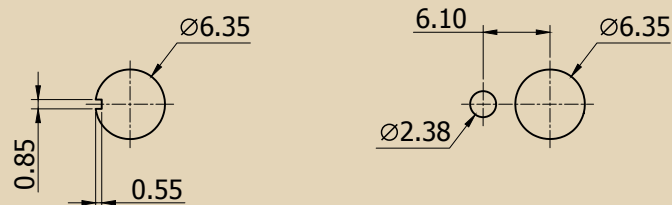
Position 2 - ON

2-1, 5-4



# MOUNTING

Unit = mm



Without locking ring.

With standard locking ring

PANEL MOUNTING

# MATERIALS

**Case:** Diallyl Phthalate (DAP) (UL94V-0)

**Actuator:** Chrome plated brass

**Bushing:** Chrome plated brass

**Housing:** Stainless steel

**Contact terminals:** Silver plated copper alloy

# SPECIFICATIONS

**Mechanical Life:** 40,000 make-and-break cycles

**Contact Resistance:** 10m $\Omega$  max. Initial @ 2-4VDC  
100mA for both silver and gold plated contacts

**Insulation Resistance:** 1,000M $\Omega$  min.

**Dielectric Strength:** 1,000 Vrms min. @ sea level

**Operating Temperature:** -40 $^{\circ}$ C to 85 $^{\circ}$ C

# BASCULER

Model BM-DPDT-1-1

Medium Shaft Length Mini  
Double Pole Double Throw (on-on)

**GØRVA**  
design

Premium Effect Pedal Parts

Made in Taiwan

RoHS Compliant & Lead-Free