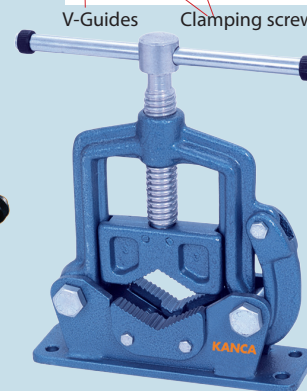
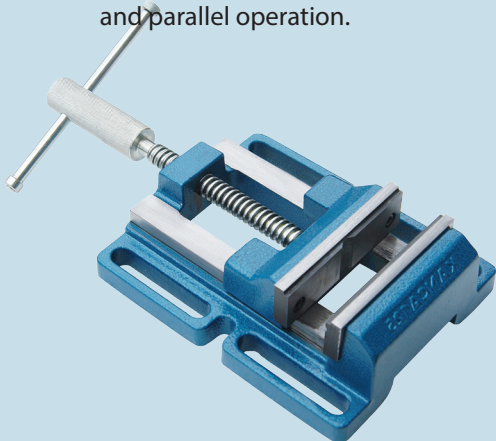
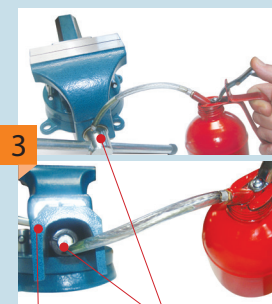
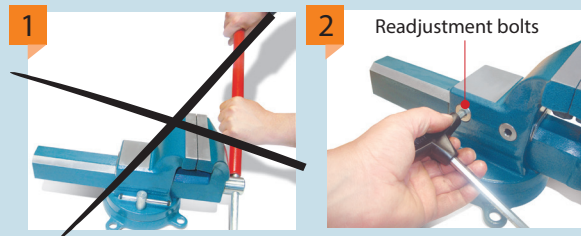


# KANCA VISES

## Instruction manual:

- 1 Only the original clamping lever should be used for clamping workpieces on the vise. Using pipes and similar bars may damage the vise and renders the warranty void.
- 2 Over time, the v-guides might slacken. Using an hexagonal key, you can tighten the readjustment nuts to restore smooth and parallel operation.
- 3 The v-guides and the clamping screw especially **top of the screw** should be periodically lubricated in order to have a smooth operation and long life.
- 4 Clamping should be performed closer to the middle of the jaw in order to have a longer life. (Only for drill vises)



## Safety information

### For vises (bench vises, drill vises, pipe vises,)

- Misuse of vise can cause serious injury to eyes, hands,... etc.
- In order to ensure safety, vise must be set up and use properly.
- Please read, understand and follow all instructions given in this safety information sheet before setting up and using the vise.

### Instructions for setting up the vises

- Always use proper sized bolt, nuts, locks and flat washers in all base mounting holes. Never weld the base of the vise to any other metal objects.
- Tighten the swivel base lock down nuts at the sides of the vise only with hands.
- In order to tighten the lock nut handles never use a pipe extension as this can cause the handles to bend and create overstress on the lock down bolts.

- You should always be sure that the bench top to which the vise is mounted is properly secured.

### Instructions for using the vises

- Always use proper size vises and always use proper capacity for the work piece.
- Never use a hammer , pipe extension or cheater bar on the spindle handle of the vise.
- Never unscrew moveable jaw beyond the maximum specified opening of the vise.
- Never use a vise as a press for assembly or disassembly of the objects.
- Always wear eye and face protection when striking the vise while holding objects or when using power tools with a vise.

[www.kancaforging.com](http://www.kancaforging.com)

**KANCA**  
DESIGN • FORGE • SAFETY

**KANCA FORGING USA INC**  
2800 LIVELY BLVD  
ELK GROVE VILLAGE  
IL - 60007  
PHONE: +1 847 737 4176