

TREE EASEL CARD

STAMP-ALONG WITH CHLOE

YOU WILL NEED:

- [Stencil, stamps, papers, and toppers from kit](#)
- [8x8" Basic Circles metal die set](#)
- Luxury pearl paper – [Jupiter](#)
- Luxury pearl card – [Lapis Lazuli](#)
- Gold mirror card
- A4 printed paper pad – [Pastel Sorbet](#)
- Sparkelicious Glitter – [Champagne Shimmer](#), [Red Poinsettia](#), and [Lime Zing](#)
- Bling Box – [Everyday Essentials](#)
- Cosmic Shimmer Clear Texture Paste
- WOW! embossing powder – [Metallic Gold Rich Superfine](#)
- [WOW! clear embossing inkpad](#)
- [Art Glitter Dries-Clear PVA glue](#) and [fine-tip applicator](#)
- [Foam pads on a roll](#)
- [White cardstock](#)
- [White 8x8" straight-edged card blank](#)

PLUS:

General crafting tools including a die-cutting machine, heat tool, guillotine, and scissors

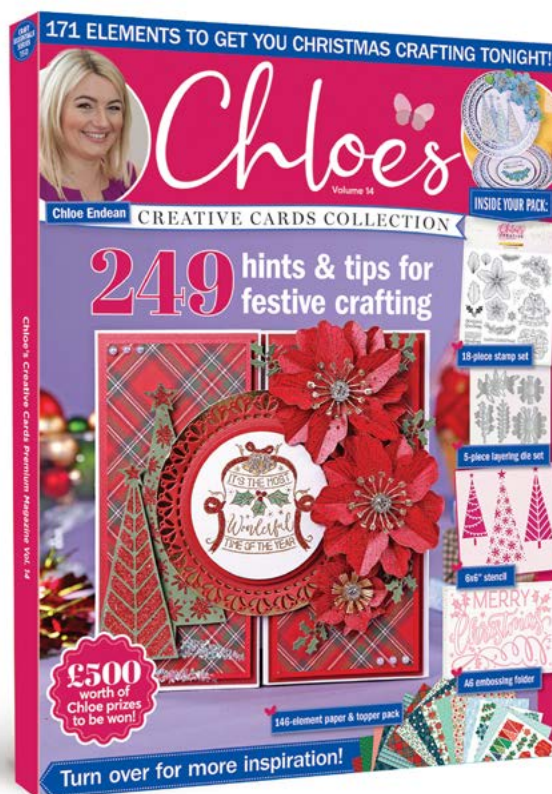


SEE CHLOE'S CREATIVE CARDS
COLLECTION ISSUE 14, PAGE 62
FOR FLOWER CONSTRUCTION
STEP-BY-STEP PHOTOS!



INSTRUCTIONS:

- 1** Create an easel card by placing the largest circle die to sit slightly over the edge of your card blank and run through your die-cutting machine. Fold one of the circles back on itself to create your easel. Die-cut another circle in the same size and affix this to the base card to create your easel.
- 2** Die-cut two circles from red snowflake-patterned paper and affix to the base card. Die-cut two smaller circles from blue plaid paper and affix to the base card using foam pads. On the easel front, edge the blue circle with PVA glue and cover with Champagne Shimmer Sparkelicious glitter. Die-cut a smaller circle from blue paper and affix to base card. Die-cut a circle frame from gold mirror card and affix to the base card using foam pads.
- 3** Tape the stencil in place onto Lapis Lazuli pearl card, paste through with Cosmic Shimmer Clear Texture Paste, then cover with Champagne Shimmer Sparkelicious glitter. Allow to dry then cut out the trees, and arrange on the card, as shown, with foam pads to create dimension. Add a jewel to the top of each of the trees.
- 4** Stamp three large flowers onto Jupiter pearl paper using a clear embossing inepad, cover with Gold Rich Superfine embossing glitter and heat to set. Cut out the flowers. Glitter the flowers using PVA glue with a fine-tip applicator and cover with Red Poinsettia Sparkelicious glitter. Allow to dry then shape the flowers by pinching down the centres of the petals. Build the flowers up by adhering together with glue. Affix flower to the base card, as shown. Die-cut the stamen from gold mirror card and affix in the centre, then add a jewel.
- 5** Die-cut two holly sprigs from green paper, glitter using Lime Zing and Red Poinsettia glitter, then adhere behind the flower. Stamp two holly springs onto green paper using a clear embossing inepad, cover with Metallic Gold Rich Superfine embossing powder, and heat to set. Cut out the holly, glitter using Lime Zing and Red Poinsettia glitter, then adhere behind the flower.
- 6** To create the easel stopper, die-cut a smaller circle from red snowflake-patterned paper and affix to the base card using foam pads. Cut out the sentiment and flower toppers and affix to the card using foam pads. Finish by glittering the flower toppers with Champagne Shimmer Sparkelicious glitter.



FIND THE FLOWER
CONSTRUCTION STEP-BY-STEP
PHOTOS IN CHLOE'S CREATIVE
CARDS COLLECTION ISSUE 14,
ON PAGE 62!

STAMP-ALONG
WITH CHLOE