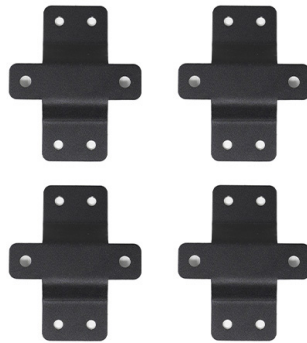


# HOW TO INSTALL:

## ROOF TOP TENT MOUNTS



CALI RAISED  
LED



### ROOF RACK RTT MOUNT HARDWARE

Quantity	Type	Thread	Length	Mat/Type	Finish
16ea	Bolt	1/4-20	1/2	Stainless	Black Oxide
16ea	Washer	1/4	N/A	Stainless	Black Oxide
16ea	Drop T-Nut	1/4-20	N/A	N/A	N/A
8ea	Bolt	5/16-18	3/4	Grade 5	Zinc
8ea	Lock Nut	5/16-18	N/A	Grade 5	Zinc

### ROOF RACK RTT MOUNT TOOLS

Quantity	Type	Size	Notes
1ea	Wrench	1/2	
1ea	Allen Wrench	5/32	

### Step 1



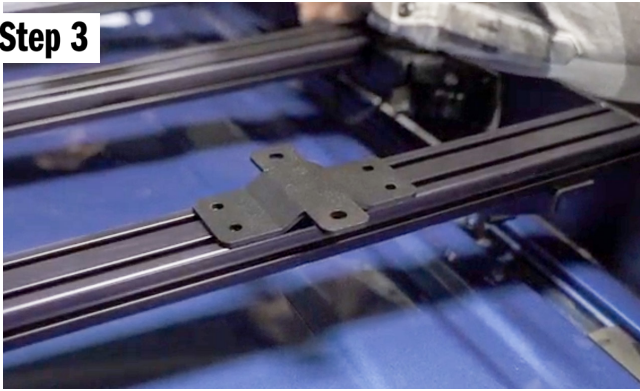
First we need to prep the tent. You will need to follow all of your tents installation instructions. When it is time to install the t-nuts into your tent rails, we recommend using the included 5/16" bolts as they are shorter and will not hit your roof. Slide the bolt in, ensuring it fits inside the nut, then slide the nut into the rail.

### Step 2



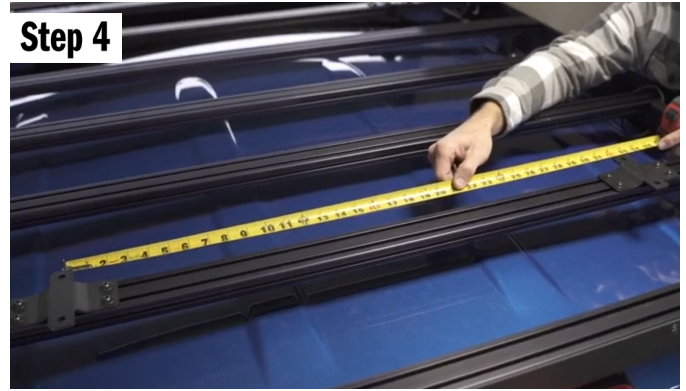
Repeat Step 1 8ea times, then try to position the hardware in the same position it will need to be when you put the tent on the roof. It will more than likely move as you handle the tent, but it is still better to be close to the areas you need it to be.

### Step 3



Now we will set up the mounts on your roof rack. Position the mounts as far apart as possible, and over the roof rack feet as much as possible. This will help your rack distribute the load more efficiently and make your tent a little more stable while in use. Once you have your positions, slide in the drop-in t-nuts, then install a bolt and washer for all 4ea positions on the mount. Do this for all 4ea mounts. Leave the hardware loose enough to adjust your mounts.

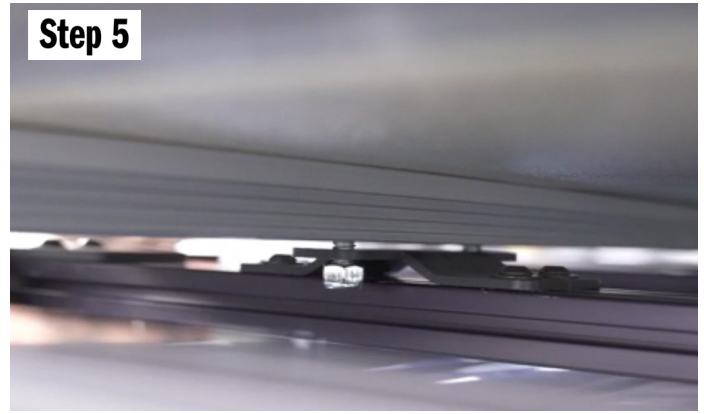
### Step 4



Measure the width of the rails on your tent, you want to measure from the center of the bolt on one rail, to the center of the bolt on the opposite rail. Then you will do the same with your mounts on the roof rack. You will want to center the mounts on your roof rack, and also make sure they are the same width as the rail. Then tighten the bolts. It is very difficult to tighten the bolts after the tent is installed.



Roof top tents can be very heavy and awkward. Installing one on the roof of your truck can be very dangerous and you can hurt yourself and your truck. Do not do this alone or without help from others or proper tools to get the tent elevated and on your roof rack.



Lift the rack up into position. Then slide the 8ea t-nuts.bolts into position and through the holes in the mounts. Then install the lock nuts. Finally tighten the 8ea bolts on the tent to the mounts.