



**ADVENTURE  
FURTHER®**

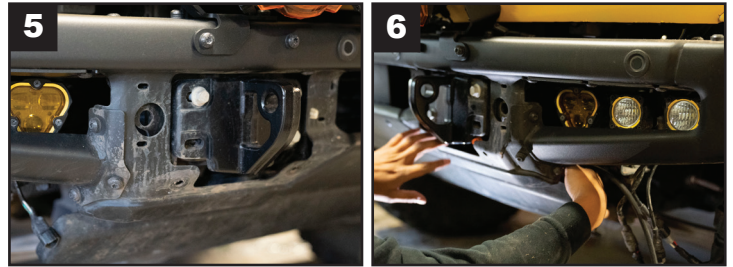
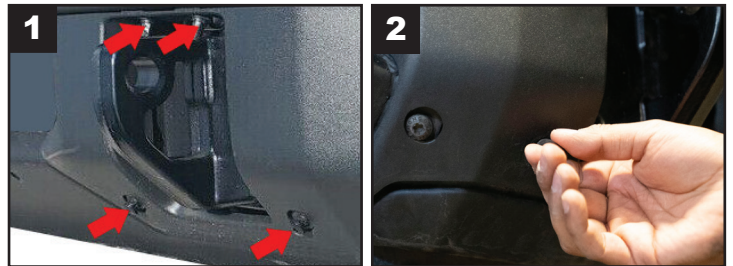
**21+ FORD BRONCO FOG POCKET KIT  
OEM STEEL BUMPER W/UPFITTER SWITCHES  
#97168**

## INSTALLATION INSTRUCTIONS

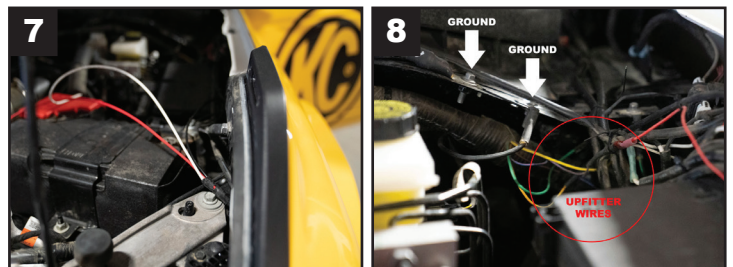
**IMPORTANT:** Please read all instructions before beginning installation. These guidelines are provided in good faith to help prevent any issues arising from errors during installation. The manufacturer of this product shall not be held responsible for any user actions taken or not taken during installation. There are many details of the installation that are assumed to be general mechanical knowledge to experienced installers; which are not detailed in these instructions. These installation guidelines are intended to serve as professional recommendations and are not as a step-by-step, fail-safe installation checklist. Selection of an experienced installer is the sole responsibility of the project owner.



### REMOVE PANELS FOR WIRE ROUTING



REMOVE PANEL MOUNT PINS AROUND TOW HOOKS ON BOTH SIDES OF THE OEM STEEL BUMPER. THERE ARE 4 PINS PER SIDE; THIS WILL GIVE YOU ACCESS TO ROUTE THE WIRES. THE 3-CONNECTOR END WILL BE ON THE PASSENGER SIDE, WHEREAS THE WIRES & GROUND TERMINAL END WILL NEED TO MAKE IT TO THE DRIVER SIDE FIREWALL. CONNECT ALL CONNECTORS. **\*\*NOTE\*\*** THE BLACK CONNECTORS ARE TO BE USED FOR THE INNER MOST FLEX ERA 3 DUAL MODE SAE FOG LIGHTS.



THE WIRE & GROUND TERMINAL END WILL GO UP THE DRIVER SIDE FENDER, ALONG THE HEADLIGHTS INTO THE ENGINE COMPARTMENT. RUN THE CABLE ALONG THE FENDER IN THE ENGINE BAY TOWARDS THE DRIVER SIDE OF THE FIREWALL.

1. GROUND THE BLACK WIRE W/RING TERMINAL TO FACTORY GROUND TERMINAL.
2. CONNECT THE RED WIRE TO AUX: 1-YELLOW (30A)
3. CONNECT THE WHITE WIRE TO AUX: 2-6 (10-15A)

### LIGHT ASSEMBLY & MOUNTING

TOOLS NEEDED:  
METRIC SOCKET, T40  
TORX & ALLEN KEY SET

