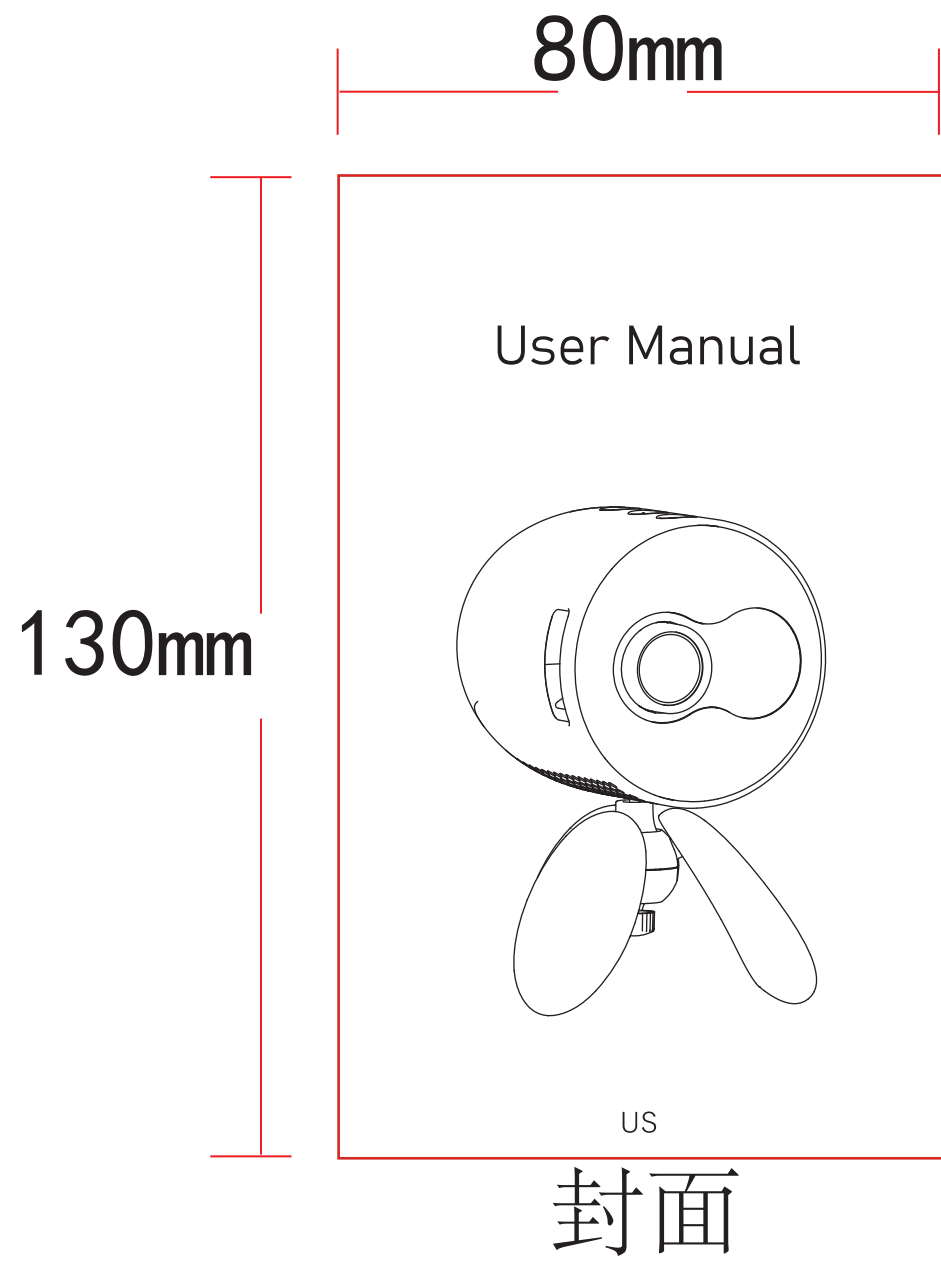


双铜128 黑白折页

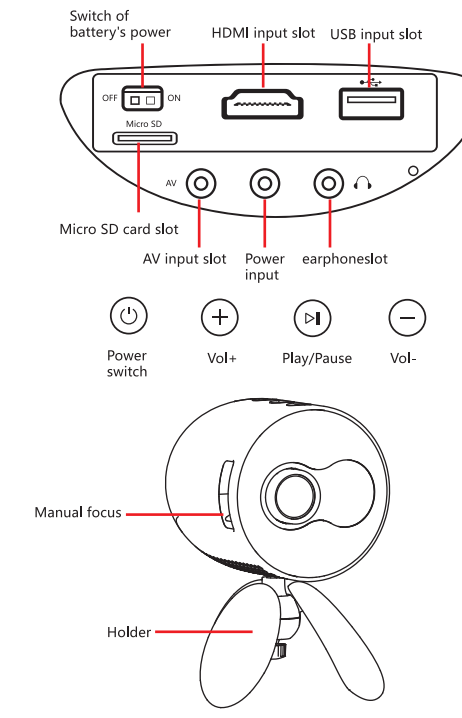


1 Safety notice

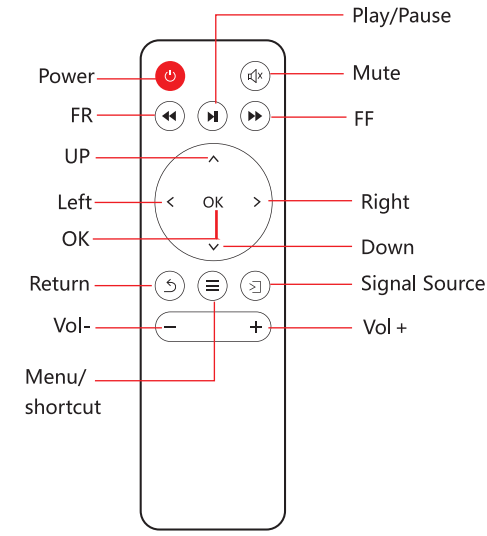
- 1.1 Please read Manual carefully before you use the projector.
- 1.2 To ensure stable power supply, please use national standard power cable and power cord with grounding.
- 1.3 Please use the same power voltage as the projector marked.
- 1.4 Please do not open the projector, otherwise the supplier will not afford warranty service.
- 1.5 Do not look directly at the projector lens while the machine is working to avoid damage your eyes.
- 1.6 To avoid clog of the projector vent, please do not cover with cloth, carpet and other materials.
- 1.7 This projector does not have waterproof function, please keep it away from rain, moisture and other items containing liquid such as vase, cup, etc.
- 1.8 To avoid electric please keep the projector away from rain or water or moisture.
- 1.9 And cut off the power supply if do not use this project for a long time.
- 1.10 Use the originally foam or other anti-shock material to protect projector, if you need transport this projector.
- 1.11 If you find the projector have problems, please contact with the supplier, do not repair by yourself.
- 1.12 To extend the projector life span and protect your eyesight, we suggest you may have a break after 3-4 hours using.

Maintain Indication:
1-year warranty from factory, for more warranty information, please contact with supplier (warranty services not including the frame, manual, package, and some subjective idea about the video, sound, image aspects).

2 Interface introduction



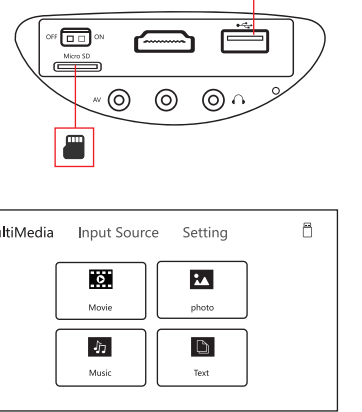
3 Remote control introduction



- *NOTE:
1. To avoid power shortage, please do not mixed use the old and new battery.
 2. To avoid battery leakage corrosion, if do not use remote control for a long time, please take the battery out.
 3. When using the remote control, please align the remote control signal transmitter to the projector's infrared signal reception window.

4 Media connection

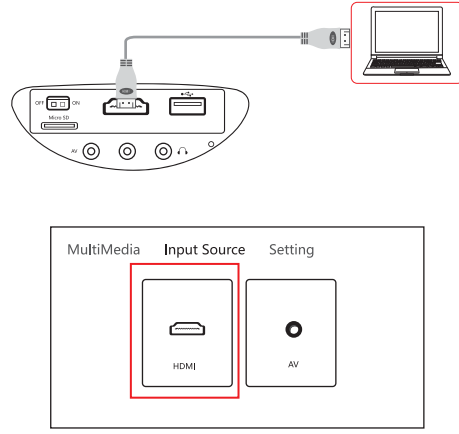
4.1. Media input slot connection
Connect the USB/Micro SD drive with the content to the projector USB/Micro SD port, select "Media", you can select movies, music, photo, text on the list.



Multi-media	Audio support	MPEG/WMV/OGG/AAC/FLAC/MP3/WAV
	Photo support	JPEG/BMP/PNG
	Video support	3GP/AVI/MKV/FLV/MP4/MOV/MP4/MPEG/VOB/MPG/RM/RMVB/WM
	Text support	TXT

4.2. HDMI equipment connection

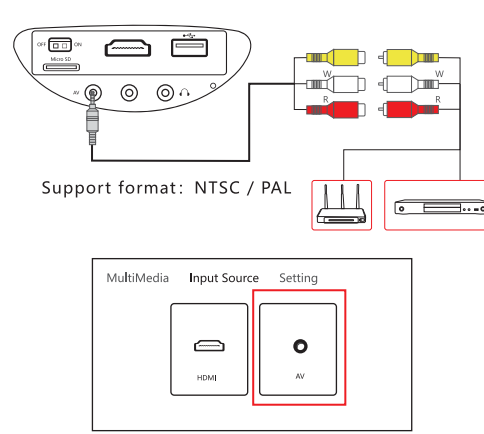
HDMI slot could connect to computer and all the device with HDMI slot. As connected, choose the source HDMI.



Support files:
576P/480P/720P/1080P/640*480/800*600/1024*768/1280*1024/1280*720/1440*900/1920*1080/1366*768/1280*800/1440*960/1600*1200/1680*1050

4.3 AV video equipment connection

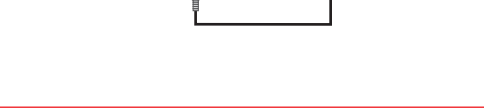
Use 3 in 1 cable video convert cable, connect projector AV slot, the connection method like the picture, as connected, choose the signal source video.



Support format: NTSC / PAL

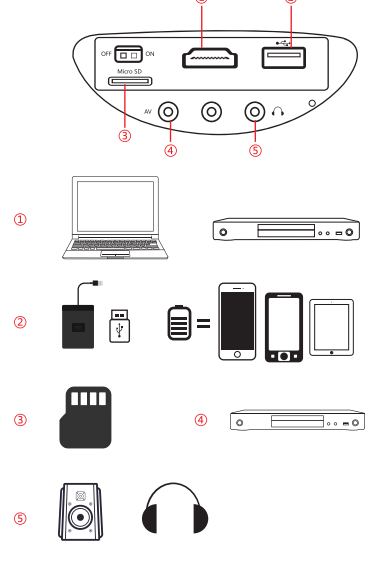
4.4 3.5mm audio device connection

Could connect 3.5mm earphone and speaker equipment.



5 Projector connection introduction

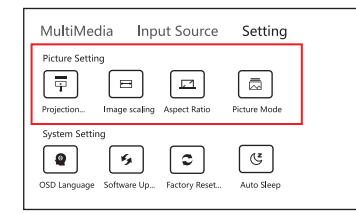
5.1 Connection introduction



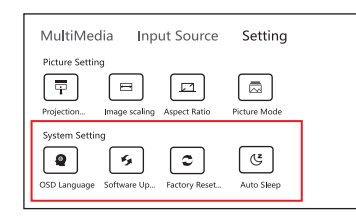
*Could connect multi-device and applications.

6 Setup menu

6.1 Picture setting
Open the home page--"Setting"--find the picture setting, you can set up the projection mode, image scaling, aspect ratio, picture mode of the projector.

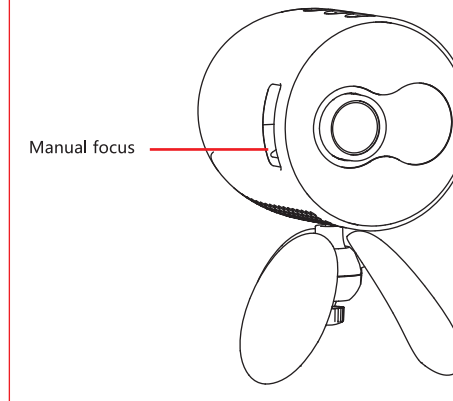


6.2 System setting
Open the home page--"Setting"--find the system setting, you can set up the OSD language, software update, factory restore, auto sleep of the projector.



7 Image focus

Put the projector vertical to the projector screen or white wall, adjust the keystone, until the image clearly enough, then the focus is finished. During the focusing, you could display video the menu to check the focus adjust.



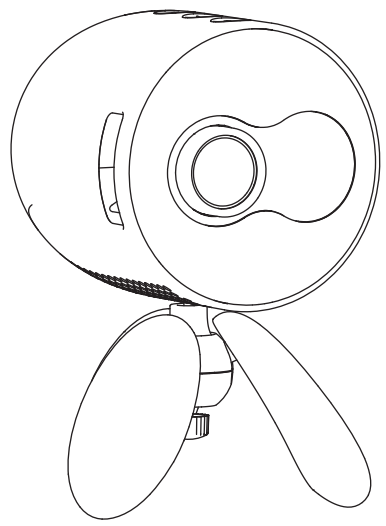
8 Technology Features

8.1 Basic parameters

Imaging technology	TFT LCD
Highest resolution	1020*1080
Light	LED
Operation mode	Manual operation
Projection distance	1.5~2.5
Projection ratio	1.5:1
Aspect ratio	16:9/4:3
Power supply	Adapter 5V-2.5A
Input	HD+USB/DP+Micro SD+AV*1
Output	Earphone
Net weight	628g
Unit size	Length:170x74x140mm Diameter:4.5x3x7.10mm

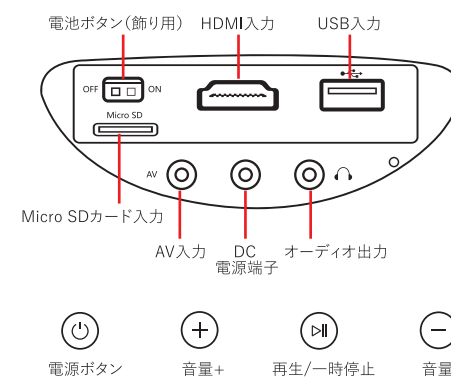
- *NOTE:
1. Phones cannot be connected directly to the projector with a USB cable. An HDMI screen mirror device must be used instead.
 - 1). Connecting an iPhone/iPad: A Lightning to HDMI adapter is needed. Once connected, the iPhone/iPad will display a prompt asking whether the device is to be trusted. Once the trust button has been tapped, the screen mirror image can be opened and projection can begin.
 - 2). Connecting an Android phone: A Micro USB/Type C to HDMI adapter is needed. Once connected, a QR code for downloading EZCast software will be displayed on the screen. Projection from the phone can begin once the software has been installed.

取扱説明書

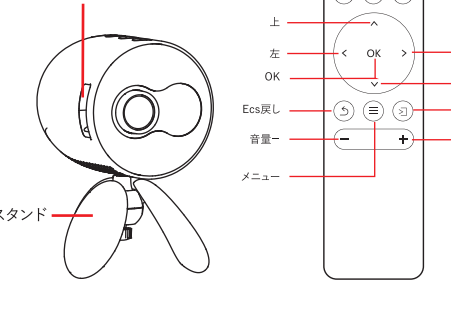


JP

商品の紹介



電源ボタン 音量+ 再生/一時停止 音量-



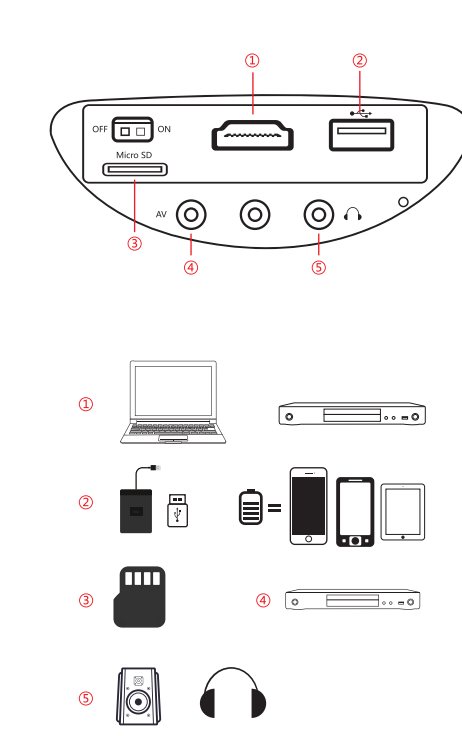
使い方

1. 本体背面のカバーを開く

2. 電源コードをコンセントに差し込む

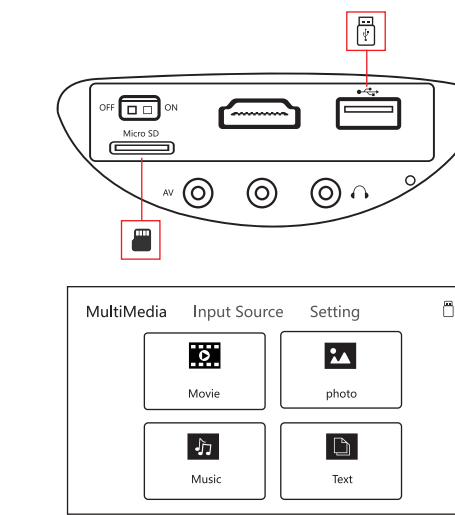
3. 電源ボタンを押して起動する

設備連携



1. USB/Micro SDカード連携手順

USB/Micro SDカードを対応の端子に挿したら、入力源「MultiMedia」を選択してください。

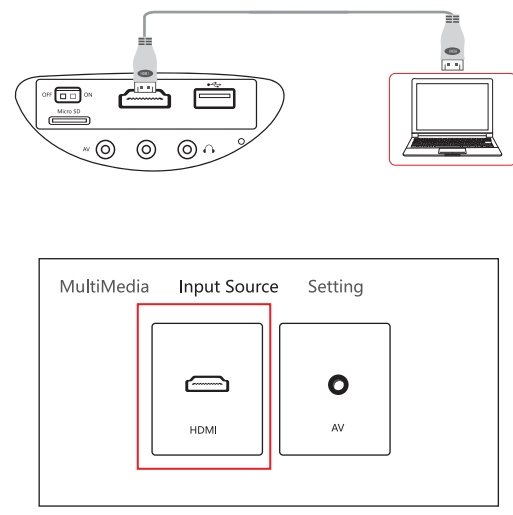


サポートフォーマット

音声ファイル	MPEG/WMV/OGG/AAC/FLAC/MP3/WAV
写真ファイル	JPEG/BMP/PNG
動画ファイル	3GP/AVI/MKV/FLV/MP4/MOV/MP4/MPEG/VOB/MPG/RM/RMVB/WM
Textファイル	TXT

2. HDMI端末連携手順

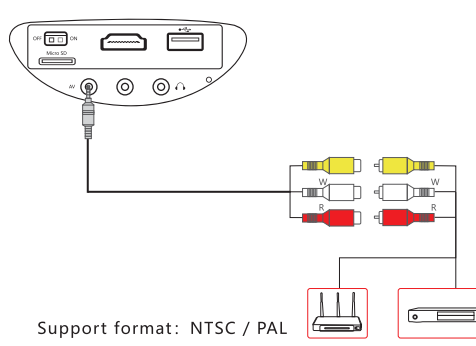
入力源「Input Source」-[HDMI]を選択してください。



Support files:
576P/480P/720P/1080P/640*480/800*600/1024*768/1280*1024/1280*720/1440*900/1920*1080/1366*768/1280*800/1440*960/1600*1200/1680*1050

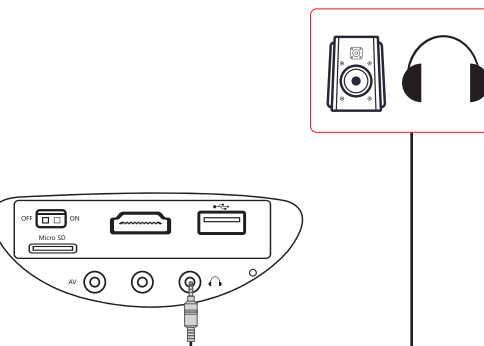
3. AV端末連携手順

入力源「Input Source」-[AV]を選択してください。



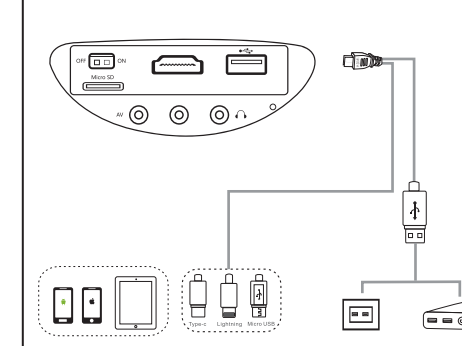
Support format: NTSC / PAL

4. 音声端末連携手順



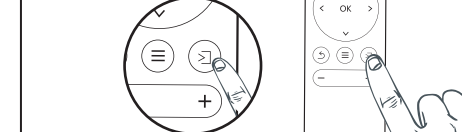
注意:
著作権保護(HDCP協議)のため、本製品はDolby音声をサポートされておりません。NetflixアプリやPrime videoアプリでもサポートされません。

1. デバイスを正しくプロジェクターに接続してください



* (iPhone/スマホとの接続説明)

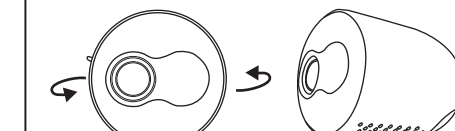
2. 入力機ボタンを押して対応モードを選ぶ



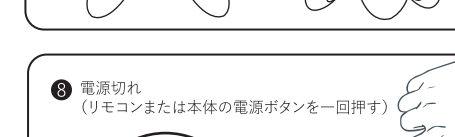
3. マニュアルフォーカスを調整する



4. 角度を調整する



5. 電源切れ (リモコンまたは本体の電源ボタンを一回押す)



仕様

投影技術	TFT LCD
最大解像度/サポート	1020*1080
光源	LED
ピント合わせ	手動
投影距離	1.5~2.5
距離サイズ比	1.5:1
アスペクト比	16:9/4:3
給電	アダプター 1.5V-2.5A
入力端子	HD+USB/DP+Micro SD+AV*1
出力端子	オーディオ出力
OSD言語	日本語を含め23ヶ国語
重量	628g
商品サイズ	146mm*110mm