

# INSTRUCTION MANUAL



## JamKast - ISFM75 Rev B

### Initial Setup

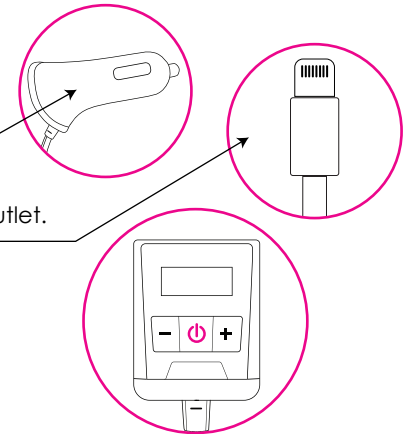
After this quick setup, you will be ready to enjoy your music wirelessly.

#### 1) Plug in

Plug the 12V power end of the JamKast into your vehicle's cigarette lighter port, or 12V power outlet. Insert the Lightning connector from the JamKast into your iPod, iPhone or iPad.

#### 2) Turn On

Press the center button  to turn on the JamKast.



### Operation

To begin enjoying your music using the JamKast, tune your vehicle's radio to the frequency shown on the LCD display, and press play on your iPod, iPhone or iPad.

#### Additional features for optimal operation

Autoscanning – The JamKast transmitter uses dTECT™ technology to locate and lock-in the four best stations for music playback from iPod, iPhone or iPad.

- 1) Hold both the **+** and **-** buttons at the same time to activate dTECT™ scanning
- 2) PRESETS will blink for 20 seconds, while scanning
- 3) Scanning is complete when PRESETS stop blinking

NOTE: We recommend activating dTECT™ auto-scanning when you enter new geographical areas as you travel.

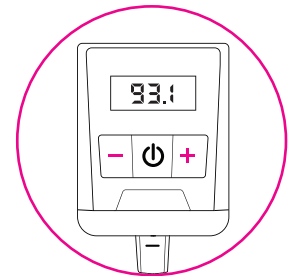
#### Selecting Presets

Use the **+** or **-** buttons to switch through the available presets.

#### Manual Tuning and Saving Presets

The JamKast transmitter allows you to manually tune to any frequency, and lock these frequencies into the preset memory.

- 1) Choose the PRESET that you want to change.
- 2) Press the center button once to enter manual tuning mode.
- 3) Use the **+** or **-** buttons to change to the desired frequency.
- 4) Press the center button once again, to lock the station into the PRESET memory.



#### WARNING:

This equipment may be reset by unintentional electrostatic discharge during operation. Exposure to direct sunlight or extreme heat may cause damage or malfunction.

FCC Class B Radio Frequency Interference Statement This equipment has been tested and found to comply with the limits for a Class B digital device, pursuant to Part 15 of FCC rules. These limits are designed to provide reasonable protection against harmful interference in a residential installation. This equipment generates, uses, and can radiate radio frequency energy and, if not installed and used in accordance with the instructions, may cause harmful interference to radio communications.

However, there is no guarantee that interference will not occur in a particular installation. If this equipment does cause harmful interference to radio or television reception, which can be determined by turning the equipment off and on, the user is encouraged to try to correct the interference by one or more of the following measures:

1. Re-orientate or relocate the receiving antenna.
2. Increase the separation between the equipment and receiver.
3. Connect the equipment into an outlet on a circuit different from that of which the receiver is connected.
4. Consult the dealer or an experienced radio / television technical for help.

Notice : The changes or modifications not expressly approved by the party responsible compliance could void the user authority to operate the equipment.

This device complies with Industry Canada license-exempt RSS standard(s).

Operation is subject to the following two conditions:

- (1) This device may not cause interference, and
- (2) This device must accept any interference, including interference that may cause undesired operation of the device.

Visit Us: [isimple.com](http://isimple.com)