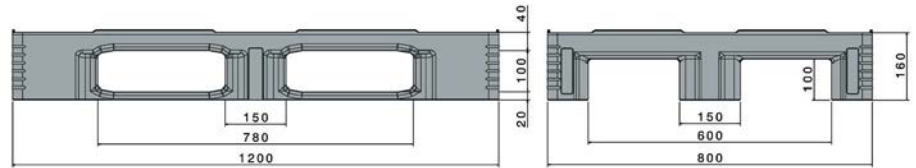









Mailbox
Stamford Products Limited

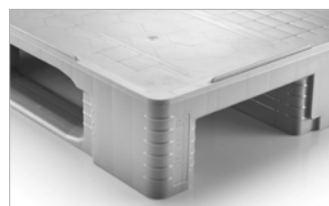
C1SL

1200 x 800 mm



Please visit: www.mailboxproducts.co.uk

Technical data ^{*1}			
Dimensions L x W x H (mm)	1200 x 800 x 160		
Weight (kg)	18.0		
Material ^{*3}	HDPE, Virgin material		
Load capacity (kg) ^{*2}	 Static 7500	 Dynamic 1250	 In racking system 1000
Characteristics	Options		
Colour: light grey, light blue Runners: 3, unwelded Rims: 7 mm Temperatur stability: -30°C to +40°C, briefly up to +90°C	Transponder Reinforcement profiles Rims		
Loading quantities (pcs/approx.)			
 Container	Container 20': 192 Container 40': 390	Container 40' High Cube: 440 Conventional trailer 45' high cube container: 510	
 Truck	MEGA-Trailer : 612	Jumbo: 684	
Labelling options			
Customised printing and numbering available on request depending on quantity. Position upon consultation.			



^{*1} All technical data include characteristic features, which have been tested under specially defined conditions. Varying data may result from different conditions of usage such as loading method, prevailing temperature and length of storage time. Our service team is pleased to be at your disposal to check the special requirements of your individual application.

^{*2} **Static load:** resistance to pressure on a flat ground surface and an evenly distributed load at a room temperature of approx. 20 °C.

Dynamic load: on a forklift with an evenly distributed load at a room temperature of approx. 20 °C.

In racking system: evenly distributed load (sacks) along the longitudinal sides. Resting on two supports for over 100 h at a room temperature of approx. 20°C.

^{*3} Although still within ISO compulsory range, the load-bearing test results using pallets made from regranulated material show slightly more variation than those from virgin HDPE.

T: +44 (0)161 330 5577
F: +44 (0)161 330 5576
E: sales@mailboxproducts.co.uk

Mailbox: Stamford Products Limited
Bayley Street, Stalybridge, Cheshire.
SK15 1QQ. United Kingdom.