



# THE GUESTLIST





Tina is a truly artistic soul. Her unique style is joyful, playful and - most of all - colorful!

She started her career in advertising, developing international campaigns after graduating from Hochschule der Künste, Berlin. This trained her visual and verbal imagination. She then began painting large, expressive pieces of art that now also influence her daring fashion design. A dress, to Tina, is like a canvas, upon which she loves to create a modern and wearable picture.

As a renowned author, she has successfully published numerous novels and short stories. Known for "Männer sind wie Schokolade" and "Ich pfeif' auf schöne Männer," her newest book, "Der Kuss" ("The Kiss") launched in 2020. Her works are mainly romance novels from a woman's perspective, and two of her novels have been made into films for German television.

On a personal note, Tina describes herself as a real Berliner. She was born and grew up there and admits to still having a suitcase in the city. Today, she is at home in edgy London, Milan and New York.

"London is my dream home city," she says. "I'm so happy here as London is inspiring, exciting and so full of culture. Milan has soul, passion, fashion, design and great food. New York is a planet in and of itself, where everyone can be what they want to, without being looked at in a funny way. It is a restless, exhausting city with a lot of noise, but it is also a cauldron - full of ideas and energy and color. Berlin as my hometown is also very colorful, so I always feel at home, forever!"

This touches on the importance of color in her life. "Gray and beige are far too boring for me! That's why I add color to my everyday life," says Tina. Regardless of whether this color is woven into the threads of a dress that she wears, is playfully shaped across the canvas of one of her paintings, or is knitted through the yarns of her collection, color brings an aura of life and energy to everything around her. "Sometimes I'm serious, sometimes not," she reveals, indicating her bubbly personality. At the same time, she maintains a quintessentially beautiful fusion between intelligence and innocence.

Being part of THE GUESTLIST gives Tina the space for a new artistic journey. In her collection, she concentrates on powerful shade- and pattern-combinations that are vivid and exciting.

As she only wears dresses herself, her attitude is feminine, and her tailoring is made to flatter all body types. The playful, fun nature of Tina's collections comes across through intelligent use of color, shape and pattern.

When creating her latest collection, "Flash! by Tina Harf London," her inspiration struck while painting a long bright flash on one of her large canvases. She says that this was "Somehow driven by the feeling that an uncontrollable event or incident would happen. Not necessarily something frightening, more like a message 'from above.'"

Following this, in February, she designed her newest collection with that distinctive flash vividly in her mind - and decided to use it as her main graphic element. To compliment the potency of this feature and create a very strong collection, the colors of precious stones such as emerald green and amethyst purple stood out for her. Alongside these, sky blue was among her chosen pallet, with vibrant pink, a strong yellow for the flash of light itself and black for the sky at night.

"A flash looks for a place to manifest itself," Tina shares exclusively with THE GUESTLIST. "That is why my second graphic element is reminiscent of a target in archery: circles with a centre. They allow me to play with them in a cool way on dresses, on pockets of my maxi coats and even on oversized scarves and beanies."

Last but not least, she of course drew on her signature graphic element - the Splash. Depicted in fresh, new color combinations; this time on maxi dresses and knee-length dresses.

The whole collection celebrates a wonderful material: Everything is made out of 70% cashmere and 30% silk, making it warm but light and super soft and easy to wear, even for sensitive skin.





**TINA HARF LONDON THE SPLASH**

# DRESS NENA "SPLASH" | MAXI | PURPLE & YELLOW

A-LINE WINTER MAXI DRESS WITH TINA'S SPLASH LOGO. THE JOY TO PLAY WITH COLORS!

220 601 905 482



COLOURS: PURPLE AND YELLOW



SIZE: XS - XXL

€1,249.50 EUR

RETAIL, TAX INCLUDED

# DRESS NENA "SPLASH" | KNEE LENGTH | GREEN & PINK

EASY CUT WITH LONG SLEEVES, THE PERFECT WINTER POP OF COLOR!

220 604 905 670



COLOURS: GREEN AND PINK



SIZE: XS - XXL

€999.00 EUR

RETAIL, TAX INCLUDED

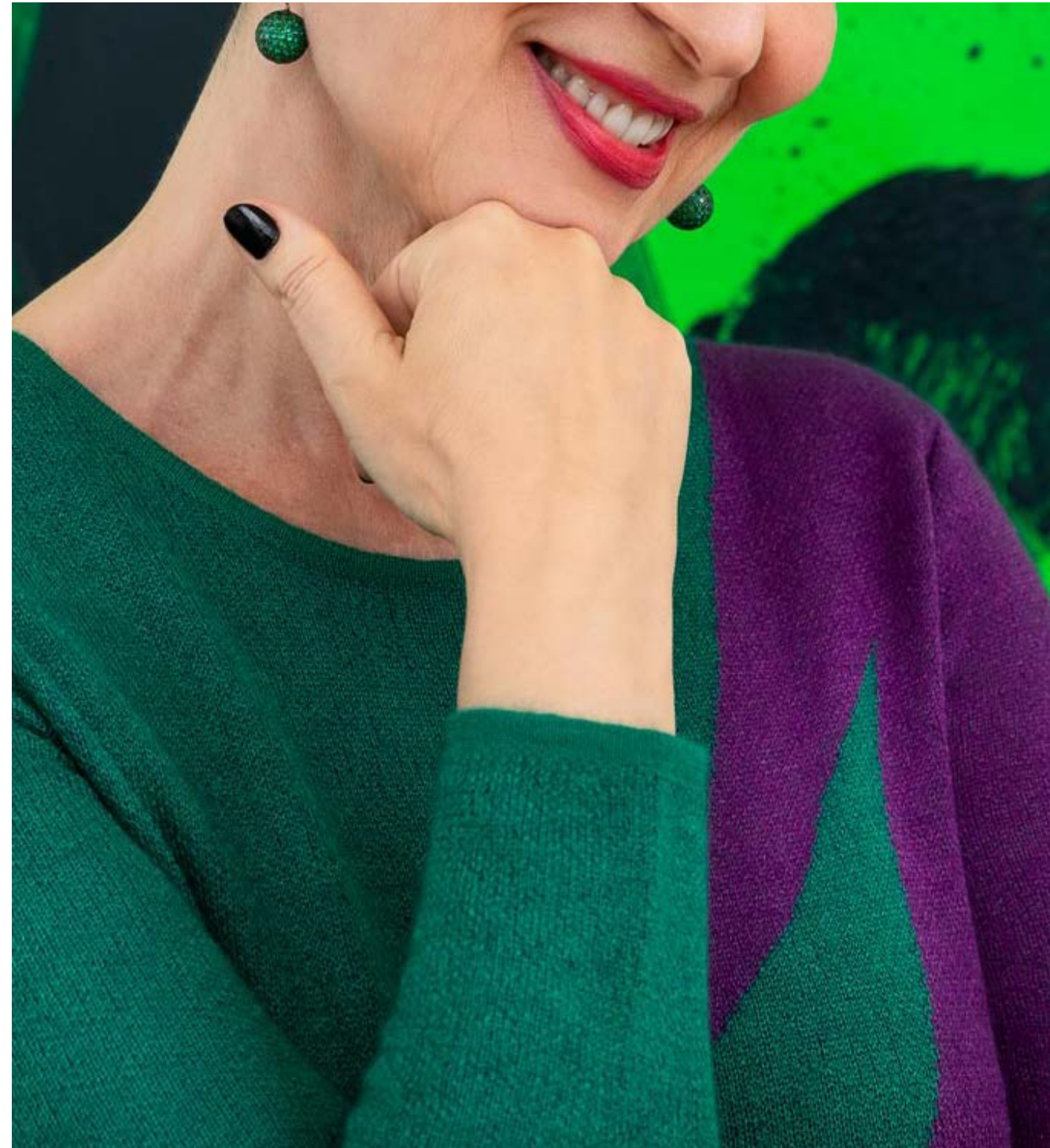
**TINA HARF LONDON  
THE FLASH**



# DRESS NENA "FLASH" | MAXI | EMERALD GREEN & PURPLE

100% VIRGIN A-LINE MAXI DRESS. A WINTERY, BOLD VERSION OF THE SUMMER TINA MAXI

220 603 905 651



COLOURS: EMERALD GREEN AND PURPLE



SIZE: XS - XXL

€1,249.00 EUR

RETAIL, TAX INCLUDED



# DRESS NENA "FLASH" | KNEE LENGTH | YELLOW & BLACK

AN EASY CUT WITH A BOLD FLASH OF COLOR AND CONTRAST, PERFECT FOR A COLORFUL COOLER SEASON!

220 602 905 503



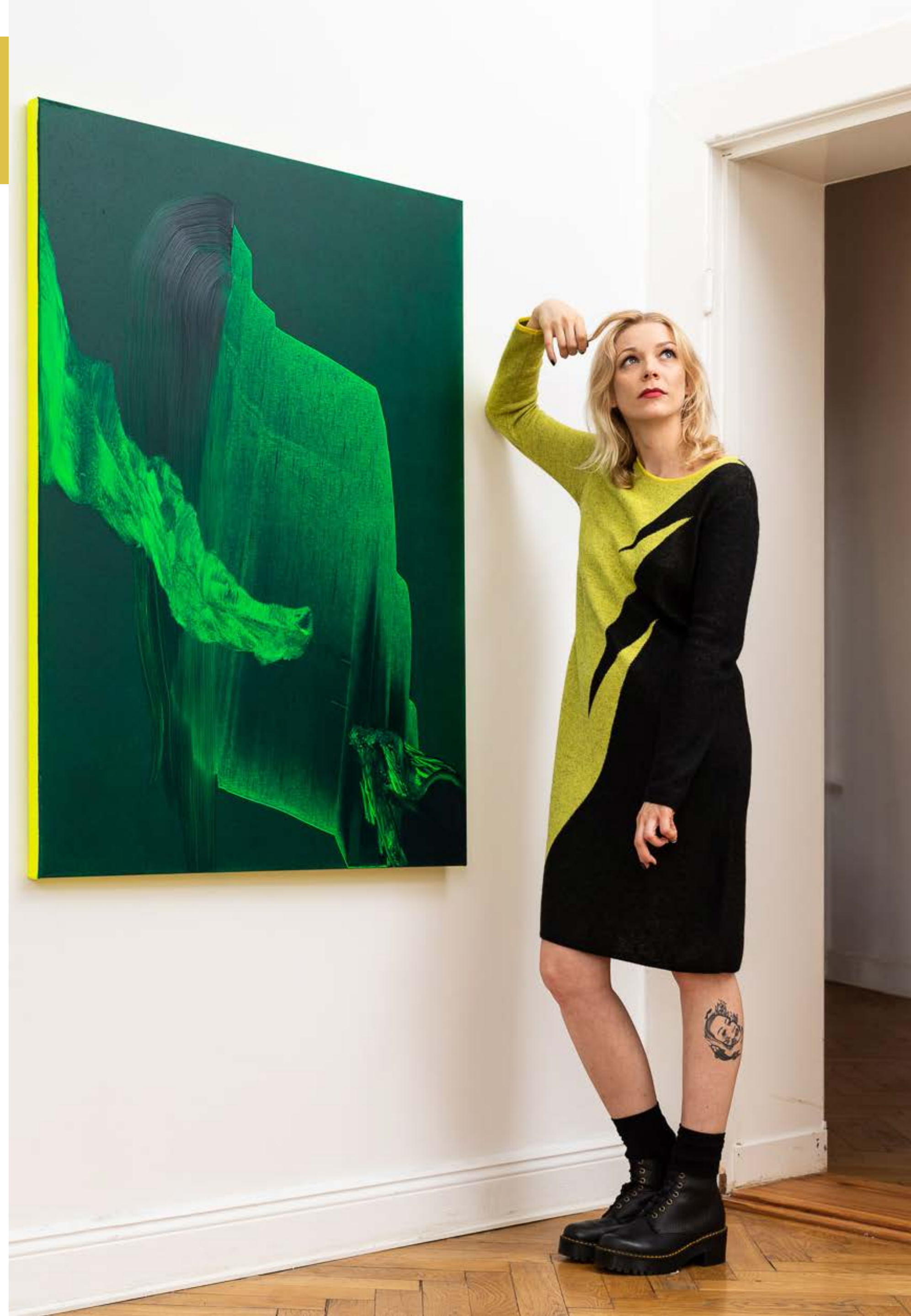
COLOURS: YELLOW AND BLACK



SIZE: XS - XXL

€999.00 EUR

RETAIL, TAX INCLUDED

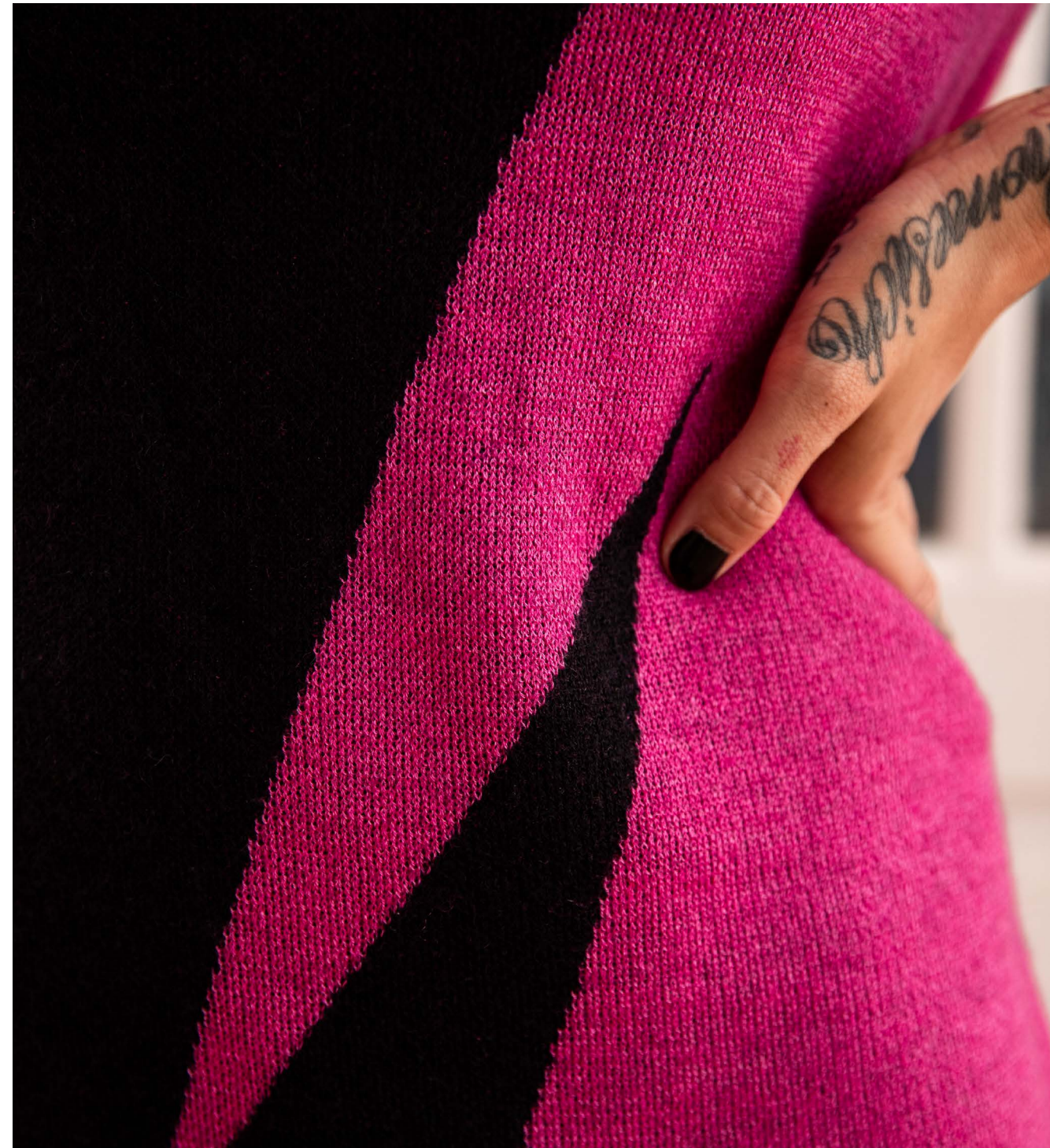




# DRESS NENA "FLASH" | MINI | PINK & BLACK

A-LINE MINI WITH THE NEW "FLASH" LOGO. COMFORTABLE AND COLORFUL, A PERFECT POP FOR YOUR WINTER WARDROBE!

220 605 905 016



COLOURS: PINK AND BLACK



SIZE: XS - XXL

€700.00 EUR

RETAIL, TAX INCLUDED



## HERA SWEATER "FLASH" | PURPLE & YELLOW

STRAIGHT CUT, FLATTERING SWEATER WITH A BOLD, STRIKING FLASH RIGHT ACROSS.

220 609 905 482



YELLOW AND PURPLE



SIZE: XS - XXL

€549.00 EUR

RETAIL, TAX INCLUDED



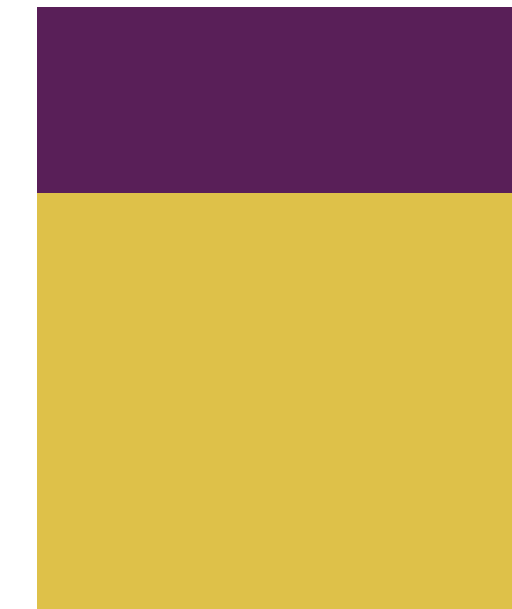
## LISA SKIRT "FLASH" | PURPLE & YELLOW

A-LINE, MINI SKIRT WITH AN ELASTIC WAIST

220 606 905 482



YELLOW AND PURPLE



SIZE: XS - XXL

€595.00 EUR

RETAIL, TAX INCLUDED

## HERA SWEATER "FLASH" | BLUE & BLACK

STRAIGHT CUT, FLATTERING SWEATER WITH A BOLD, STRIKING FLASH RIGHT ACROSS

220 609 905 018



BLACK AND BLUE



SIZE: XS - XXL

€549.00 EUR

RETAIL, TAX INCLUDED



## LISA SKIRT "FLASH" | MINI | BLUE & BLACK

A-LINE, MINI SKIRT WITH AN ELASTIC WAIST

220 607 905 018



BLACK AND BLUE



SIZE: XS - XXL

€395.00 EUR

RETAIL, TAX INCLUDED

**TINA HARF LONDON**  
**THE TARGET**



# DRESS NENA "TARGET" | MAXI | PURPLE & PINK

A-LINE MAXI DRESS. EASY, LIGHT, AND THE PERFECT BOLD ADDITION TO A WINTER WARDROBE

220 608 905 484



COLOURS: PURPLE AND PINK



SIZE: XS - XXL

€1,249.00 EUR

RETAIL, TAX INCLUDED



# DRESS NENA "TARGET" | MINI | EMERALD GREEN & BLACK

A-LINE MINI DRESS. EASY, LIGHT, AND THE PERFECT BOLD ADDITION TO A WINTER WARDROBE.

220 610 905 017



COLOURS: EMERALD GREEN AND BLACK



SIZE: XS - XXL

€700.00 EUR

RETAIL, TAX INCLUDED



**PIA CASHMERE CARDIGAN "TARGET" | MAXI | BLUE & BLACK**

LONG SLEEVE CARDIGAN WITH A BELT, AND POCKETS IN CONTRASTING COLOR WITH THE STATEMENT TARGET

220 611 905 018



BLACK AND BLUE



SIZE: XS - XXL

€1,995.00 EUR

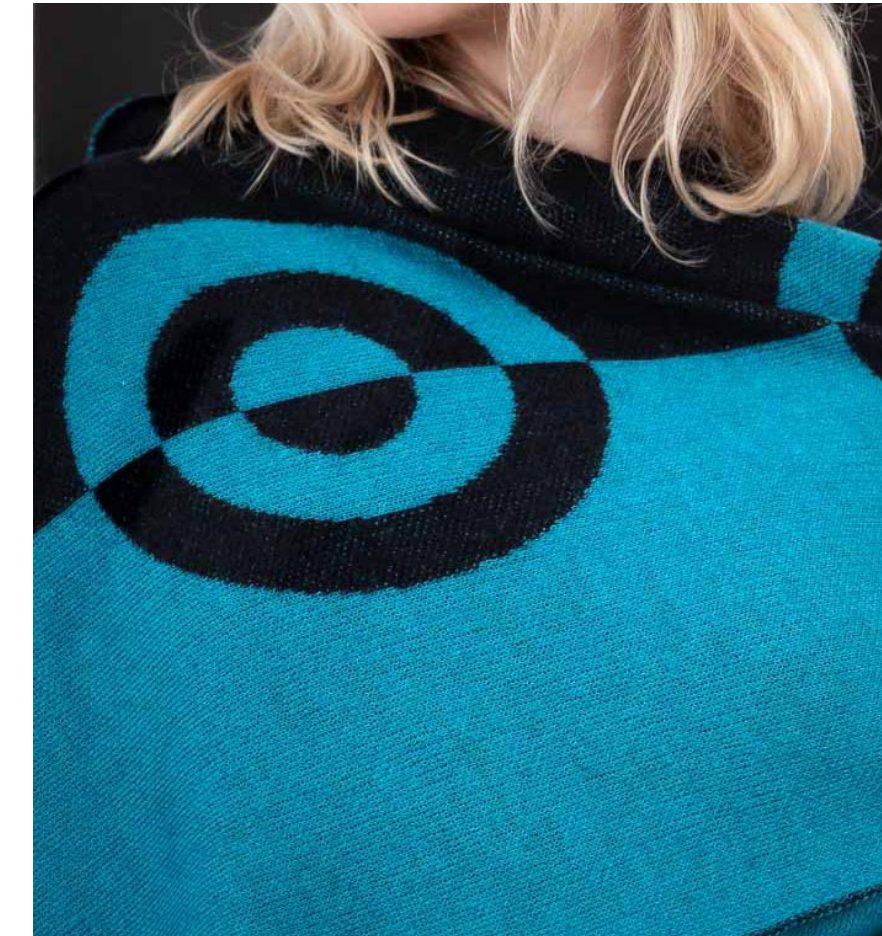
RETAIL, TAX INCLUDED



**SCARF "TARGET" | BLUE & BLACK**

STAY WARM AND STYLISH IN THE TINA HARF LONDON TARGET SCARF

220 613 905 018



BLACK AND BLUE



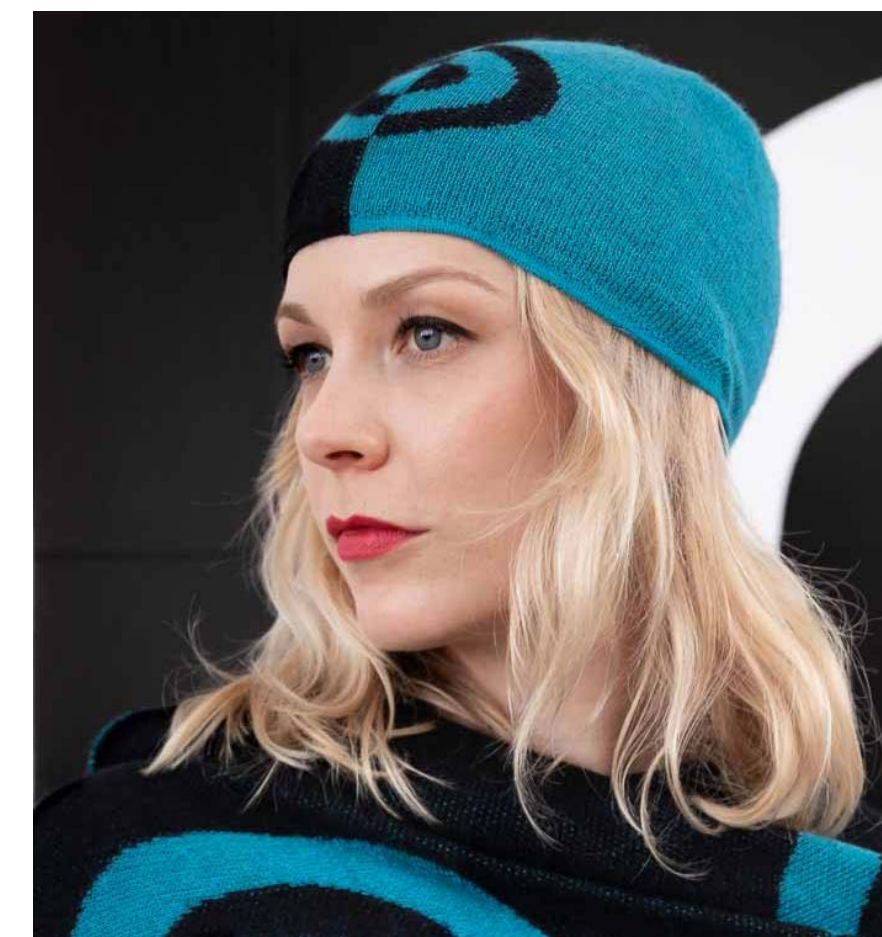
€440.00 EUR

RETAIL, TAX INCLUDED

**BEANIE "TARGET" | BLUE & BLACK**

STAY WARM AND STAND OUT WITH THIS CONTRASTING TARGET DESIGN IN A BOLD COMBINATION OF COLORS.

220 612 905 018



BLACK AND BLUE



€249.00 EUR

RETAIL, TAX INCLUDED

**PIA CASHMERE CARDIGAN "TARGET" | MAXI | GREEN & PURPLE**

LONG SLEEVE CARDIGAN WITH A BELT, AND POCKETS IN CONTRASTING COLOR WITH THE STATEMENT TARGET

220 611 905 483



GREEN AND PURPLE



SIZE: XS - XXL

€1,995.00 EUR

RETAIL, TAX INCLUDED



**CARF "TARGET" | EMERALD GREEN & PURPLE**

STAY WARM AND STYLISH IN THE TINA HARF TARGET SCARF.

220 613 905 483



GREEN AND PURPLE



€440.00 EUR

RETAIL, TAX INCLUDED

**BEANIE "TARGET" | EMERALD GREEN & PURPLE**

STAY WARM AND STAND OUT WITH THIS CONTRASTING TARGET DESIGN IN A BOLD COMBINATION OF COLORS

220 612 905 483



GREEN AND PURPLE



€249.00 EUR

RETAIL, TAX INCLUDED



# THE GUESTLIST

CONTACT DETAILS

**Anton Schumann**

CEO

THE GUESTLIST

anton@the-guestlist.com

**Sagy Shein**

Chief Marketing Officer

THE GUESTLIST

sagy@the-guestlist.com

## PRODUCTION

office@the-guestlist.com

Helmut Peterseim Strickwaren GmbH

Erfurter Str. 3 99974

Mühlhausen, Germany

## MARKETING & MEDIA

marketing@2fellasmedia.co.za

www.2fellasmedia.com

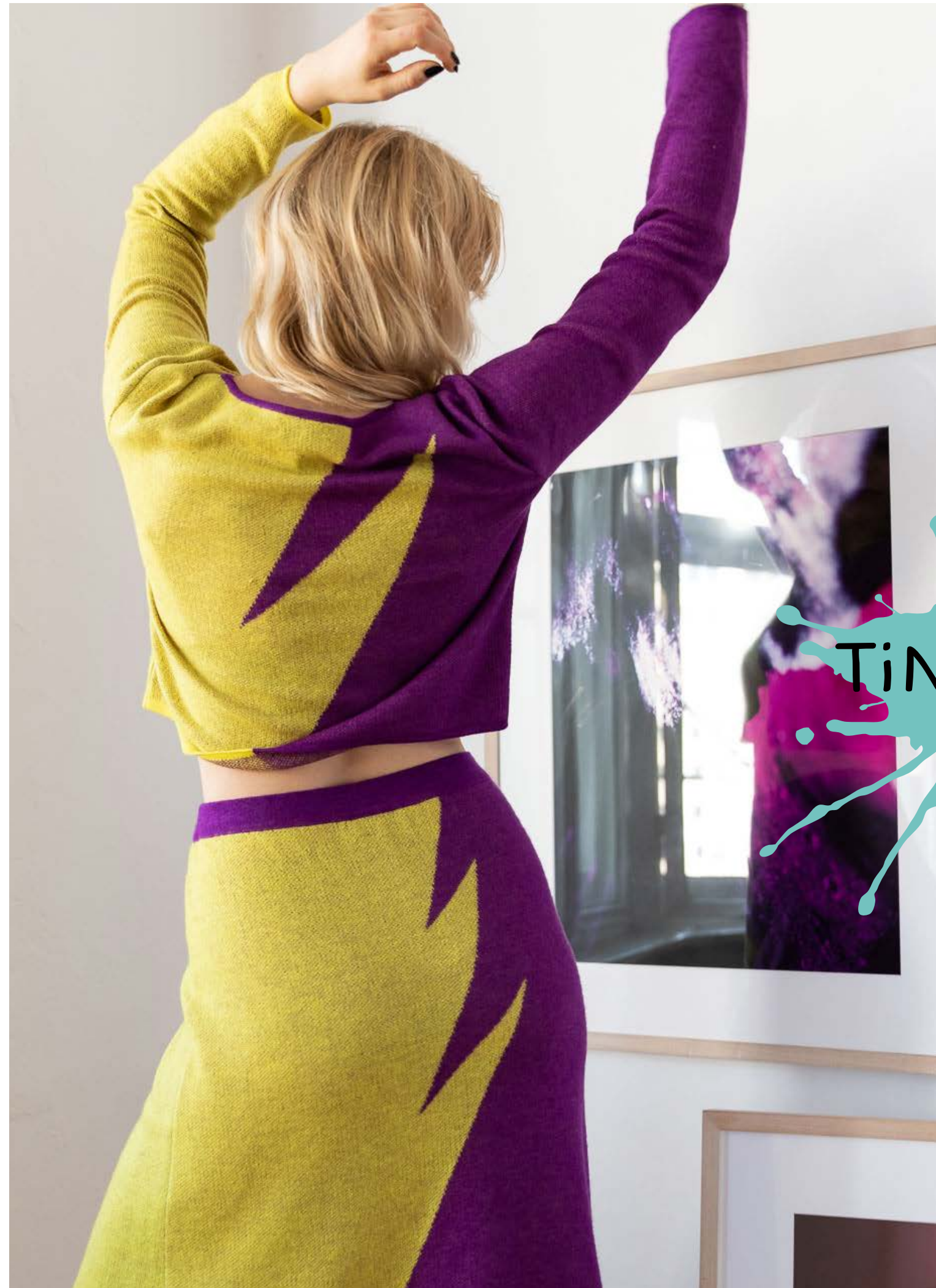
Two Fellas Media (PTY) Ltd.

[www.the-guestlist.com](http://www.the-guestlist.com)

südwollgroup



THE  
WOOLMARK  
COMPANY



TINA HARE  
LONDON

