



SUNCONTROL[®]
Window Films

SOLCONTROL
WINDOW FILMS

TINTING TOOLS AND ACCESSORIES

☎ 713-895-7400 ✉ info@suncontrol.com

CONTENTS

KNIVES & BLADES

1



TUBE SQUEEGEES

19



SCRAPERS & BLADES

4



INSTALLATION ACCESSORIES

21



HANDLED SQUEEGEES

6



MEASURE/MARK & TRIM

23



SAFETY & SECURITY

11



SPRAYERS & ACCESSORIES

24



SQUEEGEE ESSENTIALS

12



CLEANING/PREP & CHEMICALS

25



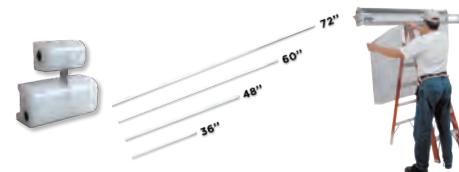
PPF/WRAPPS/VINYL & GRAPHICS

15



SLITTERS & ACCESSORIES

28



HARD CARDS

18



METERS

29



KNIVES & BLADES

STANDARD 9MM KNIVES



GT126 OLFA "SILVER" SS KNIFE
The original Olfa stainless steel knife.



GT027 NT PRO A1 "RED DOT" KNIFE
Regarded by many installers as the finest professional knife available. The blade can be advanced in 1/2 segment increments for precision control. Right or left hand use. Now includes a stainless steel blade.



GT127 OLFA A1 KNIFE
Used for film pattern cutting and trimming. Features a molded plastic handle for maximum control and comfort. Right or left hand use.



GT226 OLFA "SILVER 2" KNIFE
Significantly improved over the original "Olfa Silver". Features right or left hand use, blade position auto-lock, and one-segment click-action.



GT1018 NT A250RP AUTO-LOCK KNIFE
Chemical-resistant and heat-resistant polypropylene grip. Ratchet auto-lock slider locks blade in place while cutting. Right or left hand use.



GT227 OLFA XA1 ERGONOMIC KNIFE
This ergonomically correct knife features a comfortable rubber grip for better control and less fatigue.



GT1054 NT A300GR KNIFE
All-purpose standard duty utility knife with stainless steel sliding holder and sturdy aluminum die cast grip for long lasting use. Ratchet auto-lock slider locks blade in place while cutting. End cap also functions as a blade snapper. Designed for either left or right handed use with simple reversal of blade.



GT124 PLASTIC UTILITY KNIFE
Used for film pattern cutting and trimming.

NOTE

All knives include a carbon steel blade except the GT126, GT226 & GT027 which include a stainless steel blade.

KNIVES & BLADES

STANDARD 9MM BLADES



GT115 OLFA AB10S STAINLESS STEEL SNAP BLADES

Pack of 10. The industry standard when it comes to snap blades for film and pattern cutting. Thirteen cutting edges per blade. Use in most standard duty knives.

GT116 OLFA AB50S STAINLESS STEEL SNAP BLADES

Pack of 50.



GT123 OLFA AB50B CARBON SNAP BLADES

Standard carbon snap blades with superior sharpness and edge retention. This 9mm blade fits most standard duty knives and has 13 cutting edges per blade. Pack of 50.

GT1031 OLFA ULTRAMAX ABB50B CARBON SNAP BLADES

These blades are double-honed for extreme sharpness and are 25% sharper than the standard duty carbon blade. Eight cutting edges per blade, 50 blades per pack. Fits most standard Olfa knives.



GT1020 NT BA50SS STAINLESS STEEL SNAP BLADES

Stainless steel snap blades from the makers of the "Red Dot" knife. Use in 9mm and multi-blade cartridge knives. Pack of 50.

30° KNIFE & BLADES



GT1051 OLFA SAC1 KNIFE

Slim stainless steel body with a 30° angle blade for precision in pattern cutting. Great for graphics and paint protection. Use GT1052 or GT2100 replacement blades.



GT1052 OLFA A1160B 30° CARBON BLADES

Standard duty acute angle snap-off blade for use when precision is a must. Seven cutting edges per blade strip. Pack of 10.



GT2100 BAD21P 30° BLADE 10PK
NT BAD-21P 30° blade. 10 blades per pack, Carbon. Fits GT1051, GT026N and GT027.

MULTI-BLADE CARTRIDGE KNIVES



GT026N NT A553P INJECTOR CARTRIDGE KNIFE

Now comes with two 30 degree blades installed but will accommodate standard 9mm blades as well. Used for film pattern cutting and trimming. Holds up to five blades for automatic blade replacement capabilities.



GT984 NT A1000RP KNIFE

Cartridge cutter with aluminum die-cast grip. Cartridge holds up to 5 blades.



GT114 OLFA PA2 PRO-LOAD KNIFE

Holds up to five blades at a time giving you 65 new cutting segments per load.

KNIVES & BLADES

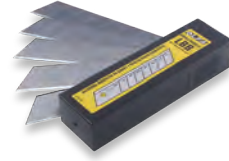
8PT HEAVY-DUTY KNIVES & BLADES



GT1019 NT L500GRP KNIFE
 NT heavy-duty knife with ratchet auto-lock slider which locks the blade into place while cutting. Blade storage in handle. Use with 7 mil or greater films.



GT111 8PT AUTO LOCK KNIFE
 Heavy-duty knife with breakaway points for use with security films 7 mil or greater. Blade storage in handle.



GT112 OLFA LBB50B ULTRAMAX 8PT BLADES
 Replacement blades for GT111 and GT1019 heavy-duty knives. Triple-honed for extremely sharp edge. Ideal for cutting thick films, 7 mil or greater. Pack of 50.



GT1021 BL50P BLADES
 Heavy-duty NT blades for use with the GT1019 and GT111. Pack of 50.



GT131 8PT BLADES
 18mm replacement blades. Fits GT111 and GT1019. Pack of 5.

ANY BLADE CAN CUT OR SCRATCH GLASS!

It depends on the glass, edge of the blade and the angle of the cut. No matter what knife or blade you use, be sure to use a SHARP blade every time!

TOOL TIP

Try the most popular knife and blade option for the various applications:

- Automotive/Residential Window Films use GT126/GT027 (pg. 1) and GT116/GT1020 (pg. 2)
- Paint Protection use GT1051 and GT1052 (pg. 2)
- Vinyl Graphics use GT026N/GT114 and GT123 (pg. 2)
- Safety and Security Films use GT1019 and GT112 (pg. 3)

SCRAPERS & BLADES

6" SCRAPERS & BLADES



GT107 6" TRIUMPH SCRAPER
Lightweight and maneuverable. Includes cover and one double edged blade



GT107A 6" ANGLED TRIUMPH SCRAPER
The handle is tilted at a 30° angle. Includes cover and one double edged blade.



GT107PC 6" TRIUMPH SCRAPER WITH SLIDE COVER
This is the new and improved version of the slide covered Triumph. With a bigger button and smoother action, the cover easily opens and closes with no hassle. No more fumbling with a separate blade cover while doing ladder work. Great for regular window cleaning, but not recommended for stripping off old film.



GT983 6" ERGONOMIC TRIUMPH SCRAPER
An improved version of the angled 6" Triumph scraper with a more comfortable grip. Includes cover and one double edged blade.



GT983A 6" ANGLED ERGONOMIC TRIUMPH SCRAPER
An improved version of the standard 6" Triumph scraper with a more comfortable grip and tilted handle. Includes cover and one double edged blade.



GT106 6" RED HEAVY-DUTY
Scraper ideal for film removal. Includes cover and one double edged blade. Use GT110 as replacement blades.

GT110 TRIUMPH HEAVY-DUTY CARBON BLADES
Replacement blades for the Red Heavy-Duty Triumph Scraper (GT106). This thicker blade (0.40 mm) offers greater strength for those tough jobs. Pack of 10.



GT108 6" TRIUMPH CARBON BLADES
Carbon steel offers strong capable scraping that lasts longer than stainless steel blades but rust more easily. Use these blades for scraping adhesive and other debris from glass surfaces. Double edged for more scraping per package. These blades fit any of the standard 6" Triumph Scrapers. (0.20 mm x 6") Pack of 25.



GT108SS 6" TRIUMPH STAINLESS STEEL BLADES
Long lasting rust resistant stainless steel blade. Perfect for removing adhesive and other debris from glass surfaces. The double edge blade offers you more scraping than other blades. (0.15 mm x 6") Pack of 25.



GT108SS-HD 6" TRIUMPH STAINLESS STEEL HEAVY-DUTY BLADES
This rust resistant stainless steel blade is thicker and stronger than the standard 6" Triumph Stainless Steel Blades. A must have for those tough film removal jobs. A new product exclusively for the tinting industry. A must have for all residential and commercial installers. (0.20 mm x 6") Pack of 25.

NOTE
All scrapers are packaged with a carbon blade.

SCRAPERS & BLADES

4" SCRAPERS & BLADES



GT104 4" SCRAPER WITH EXTENDED HANDLE
4" scraper with extended handle allowing for better leverage. Use with GT105 or GT1007 as replacement blades. Blade cover included.



GT1023 AL PRO 4" STRIPPER
This 4" scraper has an adjustable head as well as an adjustable knob for two handed use. Blades can be stored inside the handle.



GT105 4" CARBON SCRAPER BLADES
Fits the GT104 and GT1023. (.017mm x 4") Pack of 10.

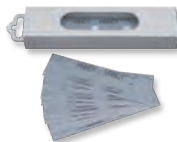


GT1007 4" CARBON SCRAPER BLADES
Fits the GT104 and GT1023. (.017mm x 4") Pack of 100.

3" SCRAPERS & BLADES



GT210 3" TRIUMPH SCRAPER
Smaller version of the regular Triumph. Designed to fit perfectly into corners.



GT211 3" TRIUMPH CARBON BLADES
Use in 3" Triumph Scraper (GT210). (.020 mm x 3") Pack of 10.

TOOL TIP

Plastic razor blades are the most effective way to safely prep automotive glass. Although the blades are plastic, proceeding with caution is always a good idea.

1" SCRAPERS & BLADES



GT109 1" CLIP SCRAPER
These effective scrapers will accommodate standard or stainless steel 1" single edge blades as well as GT139 plastic razor blades. Try the Lil Chizler in these handles for more leverage.



GT138 HEAVY-DUTY 1" RAZOR SCRAPER
GT138HYDE HYDE 1" RAZOR SCRAPER
Retractable safety scraper; intermediate blade position keeps the blade from sliding out while in use.



GT212 1" NEON MINI SCRAPER
Holds 1" single edge blade. Use with GT140, GT140-12 & GT137.

GT994 BIG BLADE
Jumbo size plastic razor blade perfect for cleaning & film removal. (3" x 4")



GT140 #9 1" SINGLE EDGE BLADES
Use in any 1" blade holder. #9 Carbon steel single edge blade, non-rust aluminum back. (.009"/.2286 mm) Pack of 100.

GT140-12 #12 1" SINGLE EDGE BLADES
Use in any 1" blade holder. #12 Carbon steel single edge blade, non-rust aluminum back. (.012"/.3048 mm) Pack of 100.



GT137 1" SINGLE EDGE STAINLESS STEEL BLADES
Use in any 1" blade holder. Stainless steel, uncoated. (.009"/.23 mm) Pack of 100.



GT2023 SCRAPERITE PLASTIC RAZOR BLADES
These plastic razor blades are double edged and safe for glass. Great for removing adhesives from window films and vinyl decals. Pack of 100 blades.

GT139 PLASTIC RAZOR BLADES
Perfect for removing leftover film and adhesive from surfaces that are easily damaged, such as rear window defrosters or other sensitive glass. Pack of 100.

HANDLED SQUEEGEES



GT050 UNGER PRO (LATCH) HANDLE
The original Unger Pro Handle. For use with the GT053, GT054, GT055 or GT056 stainless steel channels with black rubber for cleaning or blue replacement blades (GT118) for installation.

GT050E UNGER ERGOTEC (SPRING) HANDLE
Features a spring mechanism for quick blade changing and a finger indent on the top of handle for complete control. For use with GT053, GT054, GT055 or GT056 channels with black rubber for cleaning or blue (GT118) for installation.



GT050A UNGER (SCREW) HANDLE
A modified Unger handle that has proven results for maximum water extraction. For flat glass applications use with the new Extruder channels (GT252 & GT253). The handle also works excellent with Super Clear Max, Blue Max and Orange Crush Squeegees.



GT056 18" SQUEEGEE & CHANNEL
GT055 12" SQUEEGEE & CHANNEL
GT054 8" SQUEEGEE & CHANNEL
GT053 6" SQUEEGEE & CHANNEL
Stainless steel channel and soft rubber squeegee blade insert for use with the Unger Pro Handle (GT050 or GT050E). Used in the flat glass cleaning process and in the final cleanup after the film installation to remove soap streaks or smudges.



GT045N 140" SQUEEGEE BLADE
GT048N 12" SQUEEGEE BLADE
GT049N 18" SQUEEGEE BLADE
Replacement blades for Unger squeegee channel. Use for window cleaning, not installation.



GT1001-36 UNGER 36" HARD REPLACEMENT BLADE
Hard replacement rubber is ideal for warmer working conditions and for optimum liquid removal on large, flat surfaces.



GT252 6" EXTRUDER CHANNEL
GT253 8" EXTRUDER CHANNEL
This channel works in your existing Unger handle or the GT050A. It is designed to give your squeegee blade added stiffness and a better angle to aid in laying down the film and extracting more water per squeegee pass. Use GT118, GT2107 or GT2108 squeegee material.



GT2107 120" FUSION ORANGE CHANNEL REFILL
GT2108 120" FUSION BLUE CHANNEL REFILL
Fusion Orange Channel squeegee is 85 durometer and Fusion Blue Channel Squeegee is 94 durometer. Easily cut the roll to the channel.



GT118 BLUE SQUEEGEE REFILL (6", 8", 12", 18" OR 120" ROLL)
Use in the Unger squeegee channel as a finishing squeegee for maximum water removal. Replacement blade for GT207. Use with GT252 or GT253 Extruder Channels.



GT208 SIDE SWIPER HANDLE ONLY
GT207 SIDE SWIPER WITH BLADE
A great tool for the lower edge of rear windows and behind brake lights. Use 6" of GT118, GT2107 or GT2108 as a replacement blade.



GT081 SHORT-CUT
Short-Cut is a revolutionary tool designed for reaching deep into the window edge past the dot matrix. Extraordinary rigidity, excellent grip, but still nice and compact.

HANDLED SQUEEGEES



GT062 6" PRO SQUEEGEE DELUXE
GT064 8" PRO SQUEEGEE DELUXE
 An installation squeegee as a ready-to-use assembly. Used to remove application solution during the installation of all flat glass film types.



GT061 8" PRO SQUEEGEE BLADE
GT063 6" PRO SQUEEGEE BLADE
 Replacement blade to Pro Squeegee Deluxe (GT064 or GT062) used as a means of removing application solutions from beneath the film during the installation of all flat glass film types. Square edge.



GT059 8" FLATFOOT SQUEEGEE BLADE
GT069 6" FLATFOOT SQUEEGEE BLADE
 Specially angled blades for the Pro Squeegee Deluxe (GT062 or GT064). The angle is designed to maximize the surface area in contact with the film, thereby removing much more mounting solution than a standard Pro blade with a square edge. Beveled edge.



GT040 SLIM FOOT
 Modeled after the Big Foot Squeegee, the Slim Foot has a slender design that can reach into tighter openings. This no rib squeegee helps reach behind brake lights and has a rubber grip for secure handling. Measures 15" from blade tip to handle end.



GT034 WHALE TAIL SQUEEGEE
 Great for getting behind brake lights and back window applications.

GT035 WHALE TAIL REPLACEMENT BLADE

GT036 WHALE TAIL HANDLE



GT1042R TITAN SQUEEGEE-RED
 The Titan is made with the same plastic used to make bullet proof glass. This allows more strength and rigidity. The overall length is 14 3/4" which allows a longer reach for rear windows and its unique design will easily lift inner and upper door seals.



GT205 THE BULLDOZER I - AUTOMOTIVE
 Allows you to get to those hard to reach areas, such as behind speakers, brake lights, low angles and rear windows. Features a 6" squeegee blade and is 15" in overall length.

GT206 THE BULLDOZER II - FLAT GLASS
 Features reinforced ribs on the back side for extra rigidity and leverage. Includes 6" squeegee blade and is 15" in overall length. The Bulldozer Squeegees have a new rubber compound for less slip resistance, a flatter blade for better water extraction and added plastic under the blade corners for additional strength.



GT985 PERFORMAX HANDLE
 Ideal for water extraction when used with GT117, GT117B, GT203 or GT257. Features a socket that accepts standard broom or paint roller extensions. This allows installers to get more leverage.



GT043 BIG FOOT
 Specifically designed to remove water from the lower portion of rear windows. Features a flex-firm blade molded right into the long flattened tennis racquet-style handle. The handle is wrapped with genuine Head Softac traction grip material. Reaching the lower deck of back windows is not a problem with Big Foot. This tool measures a full 15" from blade tip to handle end.

HANDLED SQUEEGEES

GT178 THE REACH TOOL

This tool is designed to effectively squeegee water from the most difficult places to reach. THE REACH allows you to squeegee water from the bottom of the back window or windshield with ease.

THE REACH is made with a special formulated plastic and rubber in order to achieve the necessary stiffness and durability of its four edges. This tool is 16 3/4 inches in length, and built with a double rubber blade on each side. One side of the tool provides an excellent grip, while the other side uses both edges to squeegee the water out; one pushes the water and the other drags the water. This tool is completely adaptable with two different radiuses of curvature at each side; in other words, one side is stiffer than the other.



GT122

GT204



Beveled Edge

GT117



GT117A



Square Edge

GT117B

GT122 BLUE MAX SQUEEGEE WITH HANDLE

GT204 SUPER CLEAR MAX SQUEEGEE WITH HANDLE

Ready-to-use installation squeegee. The specially modified Unger handle makes these installation squeegees must haves. The handle is sold separately as GT050A. Replacement blades are available as part number GT203A and or GT117A.

GT117 5" BLUE MAX SQUEEGEE

GT117A 5" CROPPED BLUE MAX SQUEEGEE

Installation squeegee for automotive and flat glass applications. Harder than GT203; great for water removal. The GT117A has cropped sides with a beveled edge.

GT117B SQUARE BLUE MAX 5" HAND SQUEEGEE

Ideal for installing security film.



GT203

GT203A



GT037 FUSION HANDEE TOOL

The Fusion Hand Dee Tool is a MAGNETIC handle that can accommodate any 5" squeegee. Equipped with a removable "jaw" and a rounded grip to fit perfectly in your hand.



GT939 5" PINK CLEAN

Pink Clean is a 5" Cropped squeegee blade. The softest blade from Fusion Tint Tools. This blade is specifically designed with cleaning in mind. It is recommended to use the Pink Clean squeegee blade to easily remove liquids with minimal pressure applied by the user.

GT203 5" SUPER CLEAR MAX SQUEEGEE

GT203A 5" CROPPED SUPER CLEAR MAX SQUEEGEE

Softer version of the Blue Max Squeegee, more flexible for back window installations.



GT1022

GT1022B

GT1022 STROKE DOCTOR GT1022B STROKE DOCTOR REPLACEMENT BLADE

Designed with an I-beam construction handle that features an ergonomic slip-resistant grip and longer blade to apply squeegee pressure more evenly in the most hard to reach places.

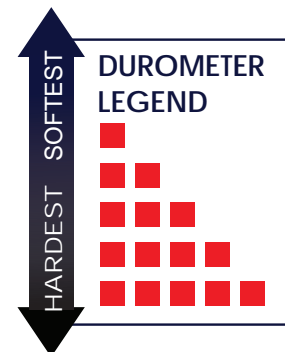


GT2109

GT2110

GT2109 FUSION BLUE STROKE BLADE GT2110 FUSION ORANGE STROKE BLADE

Fusion Blue and Orange Stroke Blades fit the Stroke Doctor handle (GT1022). Blue is 94 durometer while the Orange is softer at 85.



HANDLED SQUEEGEES



GT2056B GO DOCTOR BLUE (HARD)
GT2056Y GO DOCTOR YELLOW (FLEX-FIRM)
GT2056R GO DOCTOR RED (SOFT)

A fully integrated squeegee system where all of the components have been designed together, to work together. The I-beam handle fits comfortably in your hand. The I-beam handle is wrapped with a comfortable, non-slip material that provides secure grip. Go Doctor incorporates a quick-change blade system for speedy on the job replacements.



GT2057B GO DOCTOR BLUE BLADE (HARD)
 Use for window film and auto wrap installs.

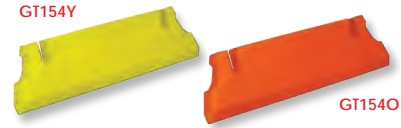
GT2057Y GO DOCTOR YELLOW BLADE (FLEX-FIRM)
GT2057R GO DOCTOR RED BLADE (SOFT)
 Use for window film, auto wraps, vinyl graphics and paint protection installs.



GT2057D DUAL DENSITY GO DOCTOR REPLACEMENT BLADE
 Replacement blade for any Go Doctor Handle. Get two blades for the price of one. The Dual Density blade is double sided and reversible. 85A RED, 95A BLUE.



GT153Y GRIP-N-GLIDE YELLOW (FLEX-FIRM)
GT153O GRIP-N-GLIDE ORANGE (SOFT)
 Grip-N-Glide combines an ergonomic handgrip with high-performance, interchangeable blades to give you just what you need for tint, wrap and PPF installations.



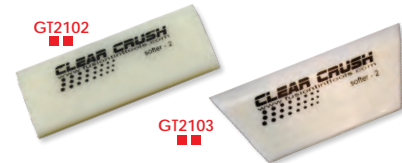
GT154Y GRIP-N-GLIDE YELLOW REPLACEMENT BLADE (FLEX-FIRM)
GT154O GRIP-N-GLIDE ORANGE REPLACEMENT BLADE (SOFT)
 Unlike tube squeegees with their belt-sanded round edges, the Grip-N-Glide features a .24" thick squeegee blade with French edges that are machine milled for maximum water extraction. Use either the firm yellow 90A or softer orange 85A blade to meet your application needs. The blades fit snugly into a frame that is covered by a substantial handgrip designed with comfortable finger grooves and a special surface texture to provide the ultimate control in either wet or dry use.



GT2101 5" HYBRID SQUEEGEE
 On one side the Hybrid is an Orange 85 durometer squeegee blade and on the other side a harder Blue 95 durometer. This dual blade features double beveled working edges.



GT259 8" ORANGE CRUSH
GT258 5" CROPPED ORANGE CRUSH
GT257 5" ORANGE CRUSH
 These blades help expel water while keeping their strength. The Orange Crush conforms to curved glass. Blades fit into a handled grip or can be used alone.



GT2102 5" CLEAR CRUSH SQUEEGEE
GT2103 5" CROPPED CLEAR CRUSH SQUEEGEE
 The Clear Crush is a squeegee blade designed for users that prefer the flexibility of a soft squeegee but with the stiffness of a harder squeegee. This blade is the best of both worlds. Soft enough to squeegee curved surfaces without having to apply too much pressure but stiff enough to push or pull solution away from the job at hand.



HANDLED SQUEEGEES



GT1047 5" FUSION HANDLE
GT1058 5" FUSION HANDLE - SHORT HANDLE
GT1058S 5" FUSION SHORTY HANDLE
 These handles are designed to optimize your leverage in removing mounting solution. Great for high performance automotive films and smaller residential windows. These handles accommodate any standard 5" wide squeegee blade. Fusion Shorty has the same handle length as GT1058 but without the collar.

GT1117-8 8" BLUE MAX SQUEEGEE
 The favored Blue Max installation squeegee is now available in 8" making it perfect for flat glass installs! Use this blade in the 8" Fusion Handle (GT1046) or 8" Fusion Stretch Handle (GT058) for great water extraction.
GT1046 8" FUSION HANDLE
 Ideal handle for all residential and commercial applications. Holds any 1/4" thick squeegee blade.



GT260 5" YELLOW FLAT OUT BLADE
GT261 8" YELLOW FLAT OUT BLADE
 The Yellow Flat Squeegees are available in both 5" and 8" widths. Slightly harder than the Orange Crush and comparable in hardness to the Blue Max products they work great in flat glass and security applications. For best results try in a Fusion Handle, Fusion Stretch series or Thor's Hammer.



GT273 MAGNUM RED LINE SQUEEGEE BLADE
GT2114 5" RED LINE EXTRACTOR 1/4" DOUBLE BEVEL SQUEEGEE BLADE
GT2114A 5" RED LINE EXTRACTOR 1/4" SINGLE BEVELED CROPPED SQUEEGEE BLADE
GT2114B 5" RED LINE EXTRACTOR 1/4" NO BEVEL SQUEEGEE BLADE
 The Fusion 5" Red Line Extractor Squeegee Blade is 1/4" thick with a durometer of 95. These extractor blades provide great liquid removal with every pass. Use with any of the standard 5" Fusion Handles.

GT2115 8" RED LINE EXTRACTOR 1/4" DOUBLE BEVEL SQUEEGEE BLADE
GT2115B 8" RED LINE EXTRACTOR 1/4" NO BEVEL SQUEEGEE BLADE
 The Fusion 8" Red Line Extractor Squeegee Blade is 1/4" thick with a durometer of 95. These extractor blades provide great liquid removal with every pass. Use with any of the standard 8" Fusion Handles.



GT057 5" FUSION STRETCH HANDLE
GT058 8" FUSION STRETCH HANDLE
 The Fusion Stretch handle is the latest design for installing flat glass and security films. These handles come in both 5" & 8" widths. This handle features a 14 1/2" metal extension and two rubber grip sections for maximum water removal. Accommodates any 1/4" squeegee blade.



SAFETY & SECURITY

- GT058BM** 8" FUSION BIG MOUTH STRETCH HANDLE
GT1046BM 8" FUSION BIG MOUTH HANDLE
GT057BM 5" FUSION BIG MOUTH STRETCH HANDLE
GT1047BM 5" FUSION BIG MOUTH HANDLE

The Fusion Big Mouth Handle features brass inlaid screw threads and stainless steel screws. This handle is designed to hold a 3/8" thick squeegee. One of the biggest issues installers encounter when installing thick mil films is extended dry time. This is mainly due to not being able to extract a majority of the solution because their current tools flex too much or they don't have enough strength to push as hard as they need to. The Big Mouth handles and 3/8" blades are the solution to that problem by taking more of the force required to adequately finish the job off of the installer and onto the tool. If you want to get optimum use of your Big Mouth Blade, use the Fusion Big Mouth Stretch Handle. The 14 1/2" extended handle is texturized with dual grips for maximized leverage.



- GT2117** 5" BIG MOUTH 3/8" THICK NO BEVEL SQUEEGEE BLADE
GT2118 8" BIG MOUTH 3/8" THICK NO BEVEL SQUEEGEE BLADE
GT2143 5" BIG MOUTH 3/8" THICK SINGLE BEVEL SQUEEGEE BLADE
GT2144 8" BIG MOUTH 3/8" THICK SINGLE BEVEL SQUEEGEE BLADE

The 3/8" thick blades are ideal for thick security films, graffiti films, hurricane/ bomb blast films, and windshield protection films. It is a much stiffer option at 90 durometer designed to optimize solution extraction while not putting more pressure on the back and arms of the installer. GT2143 and GT2144 have a beveled edge. Use with a Big Mouth Handle.



GT042 8" SILVER SECURITY SQUEEGEE
 Comfortable, ergonomic handle is designed especially for security film installation. Comes equipped with the GT041 blade. Curved handle applies more pressure to surface, reducing fatigue and ensuring easier, better installations. Blade is replaceable with either the Security Squeegee (GT041), Yellow Flat Out Blade (GT261), or Orange Crush (GT259) blade.

GT041 8" SILVER SECURITY SQUEEGEE BLADE
 Standard replacement blade for GT042.

GT1006 THOR'S HAMMER
 Use for 6-mil+ safety film installations, and final pass on slow drying thin films. (Flat Glass Applications) Use GT117C as a replacement blade.

GT117C SQUARE BLUE MAX-NARROW
 Replacement Blade for GT1006 Thor's Hammer.

TOOL TIP

Big Mouth Handles are designed for 3/8" thick blades only.

GT2128 FUSION FORCE GRIP
 A speciality handle made for pushing attachment systems into proper placement.



GT128 CERAMIC SAFETY FILM CUTTER
 Designed to deliver rapid, precise cuts for thick gauge safety films. It is intended for precision pre-cutting on flat, square-edged tables.

SQUEEGEE ESSENTIALS



GT995 WHITE KNIGHT SQUEEGEE
Large squeegee with narrow handle allowing for better reach.

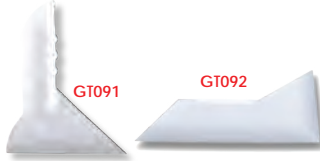


GT066 6" CLEAR SUPER SQUEEGEE
Ideal for general purpose squeegeeing. The consistency of the material produces great results with minimal effort.



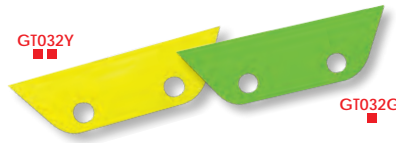
GT068 HARD CARD SHARPENER
A must have to keep hard card and other squeegee edges smooth. Uses 9mm replacement blades.

GT088 BONDO SQUEEGEE
Flexible and soft card style squeegee. Great for third brake light installs.

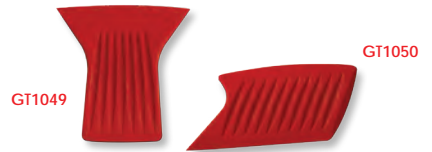


GT091 SLAMMER
Used for cleaning corners and along gaskets, wicking water out along borders and easily reaches rear windows.

GT092 SHUTTLE
A hard card with the ability to reach into tight areas located at the bottom edge of rear window glass.



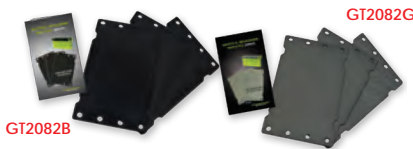
GT032Y TAIL FIN YELLOW (FIRM)
GT032G TAIL FIN GREEN (SOFT)
Great for getting behind brake lights and back window applications. Finger holes make holding onto the Tail Fin easy.



GT1049 GATOR BLADE I
GT1050 GATOR BLADE II
The Gator Blade I and Gator Blade II products are alternatives to the Lil Chizler. Each has a unique shape to give you a better grip making it easier to apply pressure.



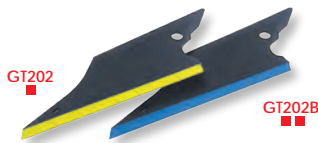
GT2081B SMOOTH-IT MAT-BLACK
GT2081G SMOOTH-IT MAT-GREY
Smooth-It is designed to effectively and evenly smooth out the edge of most tools used for film installation. It works great on plastic and rubber tools. The black mat is a medium fabric that works best and faster on big or deep scratches in the tool's edge while the grey mat is a fine fabric that is ideal for removing small or light scratches from the tool.



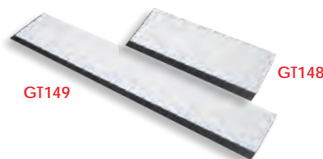
GT2082B BLACK REPLACEMENT MAT
GT2082G GREY REPLACEMENT MAT
Smooth-It Replacement Mats are sold in a 3 pack. The black (600D) mat is a medium fabric that works best and faster on big or deep scratches. The grey (1000D) is a fine fabric, ideal for removing small or light scratches on your installation tools.



GT083 ORIG LIL CHIZLER
GT083Y YELLOW DURA CHISEL
GT083W LIDCO WHITE CHIZLER
GT083YL LIDCO SOFT YELLOW CHIZLER
Ideal for removing decals, film or adhesive from sensitive surfaces. Use for pressing down small film creases or air bubbles. The White Chizler is slightly larger, has thicker edges and is harder than the original pink Lil Chizler or the Yellow Dura Chisel. The Lidco soft yellow Chizler is more flexible than all the others.



GT202 THE CONQUERER SQUEEGEE
GT202B THE BLUE CONQUERER SQUEEGEE
The Conquerer is the original corner reach tool. Features a soft squeegee blade along one edge and pointed hard card tips on the ends making it a versatile staple to any tool kit. Use the Blue version for a harder blade.



GT149 12" BLOCK SQUEEGEE
GT148 6" BLOCK SQUEEGEE
Combination squeegee/hard card used for finishing during film installations. Can be cut to various angles to reach tight, sharp corners.

TOOL TIP

The Tail Fin (GT032) is a great tool for squeegeeing behind rear brake lights.



SQUEEGEE ESSENTIALS

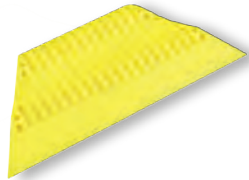


- GT201G GREEN CONTOUR (SOFT)**
- GT201Y YELLOW CONTOUR (FLEX-FIRM)**
- GT201PLT PLATINUM CONTOUR (HARD)**
- GT201PCH PEACH CONTOUR (FLEX-FIRM)**

Gives you curves where you need them. Designed to match all those concave surfaces installers see every day. A great fit for window film, paint protection or vinyl installs. The Contour hugs surfaces evenly while spreading radial pressure outward for quick film adhesion. The elongated triangular shape gets in to all those hard to reach areas.



GT113Y YELLOW DIAMOND TIP (SOFT)
 Designed to meet the challenge of hard to reach areas, with square edges and 20° angled corners on both sides. The raised area in the center gives you a secure, slip-resistant grip, even when wet. A great squeegee because of the firm texture delivering pressure to the point-of-contact while the special material helps prevent scratching. Ideal for bumping edges and heat shrinking because of the high heat-resistant material.



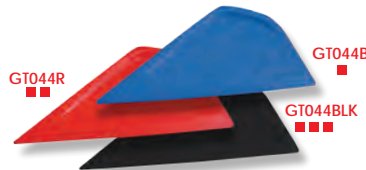
GT256 POWER STROKE YELLOW (SOFT)
 The original hand held molded squeegee, designed to fit comfortably in your hand. Measures 5.7" from tip to tip. Works well with dyed films and first pass on metal films.



GT151W WHITE QUICK FOOT (FLEX-FIRM)
GT151B BLUE QUICK FOOT (SOFT)
GT151Y YELLOW QUICK FOOT (HARD)
 A stiff squeegee with a handle for jobs that require medium reach. Slim and trim with an unwrapped handle. Comes in a variety of flex ratings to meet a wide range of applications.



GT060 EZ WING LIME (FLEX-FIRM)
GT060PCH EZ WING PEACH (FLEX-SOFT)
 The first difference in the EZ Wing from a product like the EZ Reach or EZ Reach Ultra is the unique chizzler tip that enables you to flip it over to chisel out those stubborn creases or dust spots. The second feature of the EZ Wing is the increased stiffness across the nose of the tool. This will allow you to apply more pressure out at the tip in those situations where you are reaching into a tight spot. Lastly the CCT technology provides a curved main edge.



GT044B LITTLE FOOT BLUE (SOFT)
GT044R LITTLE FOOT RED (FLEX-FIRM)
GT044BLK LITTLE FOOT BLACK (HARD)
 The Little foot features the unique blade shape of the Big Foot without the handle. Fits comfortably in your hand and features an angled, long-reach tip that gets behind gaskets and rubber seals easily. This squeegee measures about 6" (15 cm) along the usable edge. The pointed edge of this tool allows the installer to squeegee in very tight areas. Has plenty of room to keep a good grip on the squeegee.

TOOL TIP

ProToolsNow PEACH is a super-lubricated material option for Hard Cards, Contours, and EZ Wings. Peach's heavy loading of special lubrication creates a unique reformable substrate when needed to shift shapes. These products glide effortlessly over the surface of every application.



SQUEEGEE ESSENTIALS



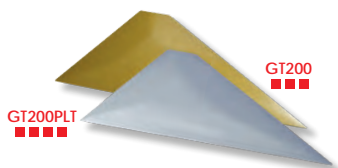
GT1025M REBEL-MANGO (FLEX-FIRM)

A hybrid of the bump card and Diamond Tip. Great as an applicator or use as a trim guide on flat glass. Rebel has a unique diagonal shape, reaching corners easily. The parallel grip ridges make holding the Rebel easy.



GT1070 PLATINUM SMART CARDZ

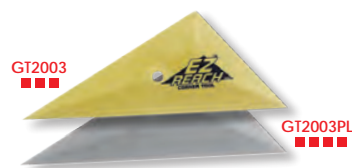
The modern version of the hard card squeegee, only better! 25% wider than a hard card, with a tapered tip, comfortable grip and thin squeegee edge make it the smartest tool in your apron. Great for sliding under gaskets and seals. Use Smart Cardz anywhere you would use hard card squeegees.



GT200 EZ REACH ULTRA GOLD (FLEX-FIRM)

GT200PLT EZ REACH ULTRA PLATINUM (HARD)

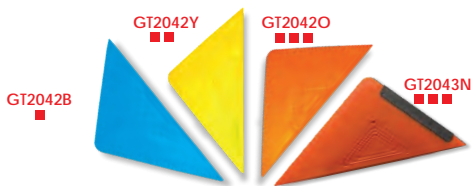
If you like the Original EZ Reach, you are going to love Ultra! It is exactly the same except the hole has been removed to make it stronger and the top has been trimmed down to give installers yet another handy angle to work with. Designed specifically to get at the corners of quarter glass windows, you will also reach for it again and again to put down those little corners of film in hard to access areas.



GT2003 ORIGINAL EZ REACH GOLD (FLEX-FIRM)

GT2003PLT ORIGINAL EZ REACH PLATINUM (HARD)

Stop cutting down hard card squeegees and use this versatile tool instead. These triangular cards with flat edges are perfect for putting down those little corners of film in hard to access areas. The gold version is flex-firm while the platinum offers a hard card texture with internal lubrication technology to help prevent scratching. EZ Reach is the ultimate corner tool.



GT2042B TRI-EDGE BLUE

GT2042Y TRI-EDGE YELLOW

GT2042O TRI-EDGE ORANGE

GT2043N TRI-EDGE PLUS

Precision angles, smooth edges and a comfortable grip. Tri-Edge is the new standard in the industry. Tri-Edge Plus features a rubber squeegee edge to help prevent dirty water returning to any open surface.



GT2003 BLUE BLUE FROG EZ REACH

An extension of the Original EZ Reach. The Blue Frog is the most slippery of the EZ Reach family.



GT2063P TRI-EDGE X PINK

GT2063B TRI-EDGE X BLUE

GT2063Y TRI-EDGE X YELLOW

GT2063O TRI-EDGE X ORANGE

The angles have been recalculated and extended into a bigger tool to make hard to reach areas more accessible.



PPF/WRAPPS/VINYL & GRAPHICS



GT2017 FINISH LINE KNIFELESS TAPE
The Knifeless Tape has a high strength filament that creates a clean sharp cut without the risk of damaging painted surfaces. (3.5 mm x 50 m roll)

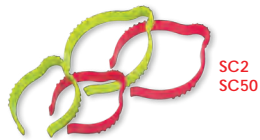
GT2018 BRIDGELINE KNIFELESS TAPE
Bridgeline Knifeless Tape is great for creating gaps and pinstripes (like rally stripes). 12.7 mm x 50 Meter rolls. *Not recommended for chrome or other metalized or textured films.



GT2067 DESIGN LINE KNIFELESS TAPE
Use Design Line Knifeless Tape to create graphic elements and striping on single layers of vinyl that have curves and contours. Design Line tape stretches more than other products so it follows contours and turns easier. (3.5 mm x 50 m roll)



GT2021 12YD. SLIP TAPE
GT2021-4 4YD. SLIP TAPE
Slip tape is the ultimate product for making your application squeegees smoothly and safely glide across window film, paint protection, car wrap and vinyl graphic applications. Avoid tearing or scratching the material you are working with. Include this product in your tool box!



SC2 SOOPER CLIP (2 PACK)
SC50 SOOPER CLIP (50 PACK)
Faster and easier than tape or rubber bands. These brightly colored Sooper Clips are designed for efficiency.



GT1000 MACTAC FELT SQUEEGEE
Recommended for paint protection or vinyl graphic installations. The soft felt is designed to avoid scratching.



GT1010 3M WET OR DRY SQUEEGEE
Soft rubber card style squeegee. Recommended for paint protection installations.



GT2099 SUEDE BLADE STRIP
4" Suede replacement strip. These are die cut to fit the 4" Speed Wing. Speed Wing can be found on page 18.



GT1065 4" LIDCO FELT SLEEVE
A felt wrap for any 4" hard card squeegee.



GT1064 4" BUMP CARD WITH FELT EDGE
Four inch hard card with two ridges or "bumps". One edge is wrapped in felt.

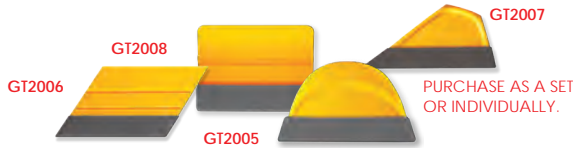


GT2096-4 4" LEMON SUEDE BLADE (FLEX-FIRM)
GT2097-4 4" CHERRY SUEDE BLADE (SOFT)
Evolved from the success of the Speed Wing family the new Suede Blade has quickly answered a lot of challenges for installers. The Suede Blade comes with a dual layer fabric that gives installers a cushioned, smooth fabric over the edge of the squeegee. The Suede Blade glides over window tint, paint protection film and vinyl graphics/wraps with ease.

TOOL TIP

Felt edge tools are becoming increasingly popular due to the changes in the industry. From Car Wraps, Vinyl Graphics, to Paint Protection films there is a felt product for most applications. Check out this growing selection of products.

PPF/WRAPPS/VINYL & GRAPHICS

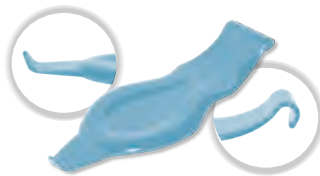


GT2005 MANGO SMART CARD WITH FELT
GT2006 MANGO REBEL WITH FELT
GT2007 MANGO LITTLE FOOT WITH FELT
GT2008 MANGO BUMP CARD WITH FELT
GT1085 MANGO PRO PACK WITH FELT (SET)
 The Monkey Strip felt added to the edge of these tools make them perfect for paint protection, vinyl signs and graphics. (Felt strip not installed)



WCKNIFE WRAP CUT LINER KNIFE
 The ultimate vehicle wrap knife! The Wrap Cut Knife by Image 1 Impact is made specifically to cut through just the liner side of any pressure sensitive vinyl graphic and wrap film. This knife will only cut through the paper release liner of the vinyl.

WCBLADE REPL BLADES FOR WRAP CUT KNIFE
 This is the replacement blade for the Wrap Cut Knife, WCKNIFE. Each blade has 4 available cutting edges. 10 blades per pack.



GT237 SUNNY TUCKER
 This tool is a must when applying graphics or PPF to challenging surfaces. Effortlessly glides over the film surface while tucking in, wrapping around and laying down.



WG1 WRAP GLOVE LG
WG1XL WRAP GLOVE XL
 The Wrap Glove is sold in pairs and is a must have for anyone installing vinyl graphics and vehicle wraps. Installing with your bare hands can cause over stretching and puckering of the vinyl as well as potential damage from the transfer of oils on your skin. These lint free and durable Wrap Gloves reduce friction while handling the material giving you great results every time.



WG2 GHOST WRAP GLOVE
 The Ghost Glove is extremely slick so defining edges with hands is immediate with no drag. This glove is lint and static free and prevents oil transfer and fingerprints. Ghost Glove is rated as A2 (extremely) cut resistant. One size fits most. Ghost Glove is sold as ONE glove not a pair.



WES WET EDGE SQUEEGEE
 Wrap your vehicles faster and better. The only squeegee applicator made to use wet. No scratches, no marks, just smooth motions that easily glides across vinyl films and painted surfaces without worry of mistakes or damage. The Wet Edge Squeegee is a Teflon squeegee with a unique microfiber bonded to it. Can be used either wet or dry. This is the top of the line applicator in the business. Colors vary.



MOLD5 MOLDING & TRIM REMOVAL TOOLS
MOLD11 MOLDING & TRIM REMOVAL TOOLS
 Mold5 includes five distinctive tools and Mold11 includes eleven distinctive tools for the easy removal of body fasteners, interior trim pieces, exterior body moldings, wheel hub caps, etc. Made from heavy-duty plastic to prevent scratching and damage to vehicle surfaces.



BPOP BUBBLE POPPER PEN
 The Bubble Popper Pen is a must have tool for any vinyl graphics installer or car wrapper. This tool is used to put a pin hole (never a knife slit) into your vinyl, printed graphics or car wrap where a bubble or rivet might be to release the air and flatten the film graphic on to the substrate.

PPF/WRAPS/VINYL & GRAPHICS



XMH XTREME MAGNET (SINGLE UNIT)
XMH6 XTREME MAGNETS-6 PER BOX

These handy body magnets make applying vinyl and vehicle wraps faster and easier by acting as another hand to hold the material. You can also use them in the place of masking tape or pre-mask to position the material on the vehicle.



MONKEY STRIPS 4" MONKEY STRIP

These pre-cut buffers fit any standard 4" squeegee. They are far superior to standard felt strips and will help prevent scratches to the wrap material during installation. Give your hard plastic squeegees a soft and smooth side with the Monkey Strips.



GT2092 4" PPF HORNET PADDLE
GT2092-0.5 0.5" PPF HORNET PADDLE
GT2092-2 2" PPF HORNET PADDLE
GT2092-6 6" PPF HORNET PADDLE

This triple durometer paddle squeegee offers the handler two durometers to install with. The black install side measures in at a firm but flexible 80 durometer and the yellow side at a softer more pliable 70 durometer.



GT2106 4" PPF HYBRID PADDLE

This paddle squeegee is dual durometer and designed for paint protection films that feature a durable hard coat. The blue side of the PPF Hybrid is a hard 94 durometer while the orange side is a more flexible 85 durometer.



GT2104



GT2105

GT2104 5" PPF BLACKOUT SQUEEGEE
GT2105 5" CROPPED PPF BLACKOUT SQUEEGEE

The PPF Black Out is a squeegee blade designed specifically for paint protection film installs, but has also become a favorite in the automotive window film industry. The PPF Black Out features a high content of slip additives to help the tool slide easily across paint protection films. At 88 durometer it is flexible enough to conform to odd surfaces. Pair this blade with a magnetic Fusion Hand Dee (GT037) to help hold the paint protection film in place during installation.



SQ4G GOLD NYLON BLEND SQUEEGEE

This uniquely nylon blended gold squeegee comes with a harder and softer side to give you a dual purpose tool all in one card. This card will also be more durable than your typical plastic squeegee as it is made of a higher grade nylon blended material. This card features three rounded corners and one 90 degree sharp corner to help with any shape or application challenge.



SQSOFT4 GREEN SOFT FLEX SQUEEGEE

The 4" Green Soft Flex Squeegee is the thinnest and the softest installation card that we offer. Made from a unique rubber and plastic blend, this squeegee has excellent bend and flex characteristics which make it perfect for applications on curved surfaces.



ER1 EMBLEM REMOVAL TOOL

This tool is used before the vehicle wrap/vehicle graphic application to remove emblems, logos and badges from your vehicle. Our Emblem Removal Tool comes with custom designed ergonomic handles that are comfortable to use.



RB RIVET BRUSH

Made of stiff bristle synthetic fiber, the rivet brush for fleet graphic installers helps form flexible cut and printed vinyl over the rivet surface.



IPEN INSTALLER'S PRIMER PEN

The Installer's Primer Pen is easy to keep in your tool pouch, pocket, or tool box. Fast and easy to use on all your applications that require precise application of Primer 94. Works with any brand of vinyl film and can be used anywhere Primer 94 is required. Ships ground domestic only.

HARD CARDS



GT086BLU BLUE HARD CARD
 GT086PUR PURPLE HARD CARD
 GT086BLK BLACK HARD CARD
 GT086PCH PEACH HARD CARD

GT086W WHITE HARD CARD
 GT086PNK PINK HARD CARD
 GT086GLD GOLD HARD CARD
 GT086PLT PLATINUM HARD CARD



GT087SQ SQUARE YELLOW LIDCO SQUEEGEE
 GT087FT FLAT YELLOW LIDCO SQUEEGEE
 GT087 YELLOW LIDCO SQUEEGEE
 GT087GRY GRAY LIDCO SQUEEGEE

GT099 UNIVERSAL SQUEEGEE
 GT079 4" 3M GOLD SQUEEGEE
 GT080 4" 3M BLUE SQUEEGEE



GT087-6GRY 6" GRAY LIDCO SQUEEGEE
 GT086-6Y 6" YELLOW HARD CARD SQUEEGEE
 GT086-6W 6" WHITE HARD CARD SQUEEGEE

TOOL TIP

Use Slip Tape (GT2021 or GT2021-4 page 15) on any edge to increase slip and reduce the risk of scratching.



GT2072-4 4" LIME SPEED WING (HARD)
 GT2072-6 6" LIME SPEED WING (HARD)
 GT2072-8 8" LIME SPEED WING (HARD)
 GT2076-4 4" LEMON SPEED WING (FLEX-FIRM)
 GT2076-6 6" LEMON SPEED WING (FLEX-FIRM)
 GT2076-8 8" LEMON SPEED WING (FLEX-FIRM)
 GT2077-4 4" CHERRY SPEED WING (SOFT)
 GT2077-6 6" CHERRY SPEED WING (SOFT)
 GT2077-8 8" CHERRY SPEED WING (SOFT)

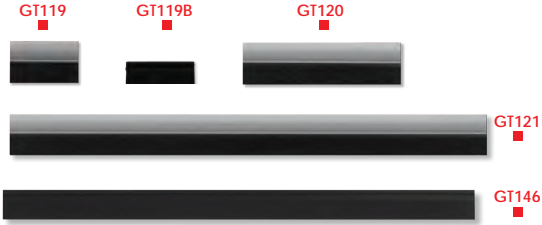
The Speed Wing is designed with "wings" to enable the installer to reach areas typically out of the reach of most bump, bondo, teflon and hard cards. The Speed Wing comes with one flat edge and one curved edge. Speed Wing is made from materials that enable it to slide across most film surfaces easily while maintaining its rigidity to lay the material flat and remove moisture or air trapped underneath. Features new Contour Control Technology.

TOOL TIP

4" Speed Wings are now also available with a suede edge. Check out Suede Blades on page 15.



TUBE SQUEEGEES



GT119 4" BLACK SMOOTHIE TUBE SQUEEGEE
GT120 9" BLACK SMOOTHIE TUBE SQUEEGEE
GT121 28" BLACK SMOOTHIE TUBE SQUEEGEE
 Soft black squeegee with gray pvc handle.

GT119B 4" BLACK SMOOTHIE BLADE
GT146 28" BLACK SMOOTHIE BLADE
 Squeegee tool used for glass cleaning, sometimes called the "Smoothie". Economy size (28") usually cut to shorter lengths before use.



GT2053 4 1/2" GREEN TURBO BLADE
GT2004 18 1/2" GREEN TURBO BLADE
 The Green Turbo is perfect for paint protection installs, can be cut down to smaller sizes, and has a durometer (hardness) between the GT146 Black Smoothie and the GT147 Yellow Turbo Blade.



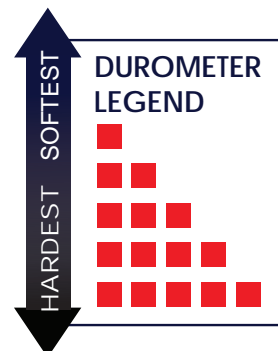
GT152 5" RED TURBO BLADE
GT150 18 1/2" RED TURBO BLADE
 The hardest version of the Turbo Blade, used for removal of application solution during the installation process.



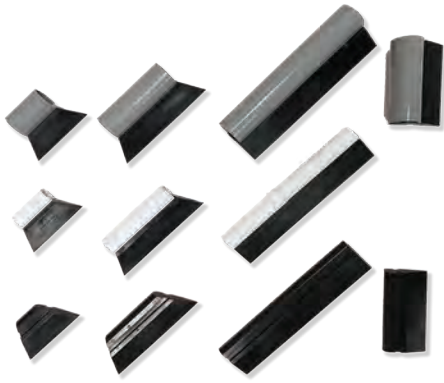
GT1026 3 1/2" SOFT DK. YELLOW TURBO SQUEEGEE
GT235S 5 1/2" SOFT DK. YELLOW TURBO SQUEEGEE
GT145S 18 1/2" SOFT DK. YELLOW TURBO SQUEEGEE
GT147S 18 1/2" SOFT DK. YELLOW TURBO BLADE
 A soft installation squeegee used to remove application solution during installation of all auto and paint protection films.



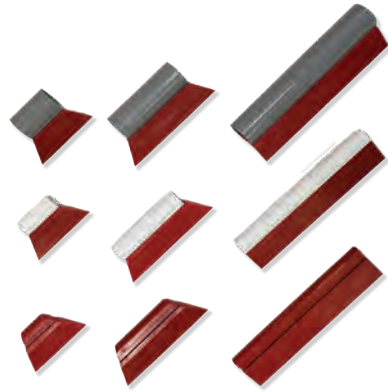
GT235 5 1/2" YELLOW TURBO SQUEEGEE
GT236 5 1/2" YELLOW TURBO SQUEEGEE BLADE
GT145 18 1/2" YELLOW TURBO SQUEEGEE
GT147 18 1/2" YELLOW TURBO SQUEEGEE BLADE
 Used for removal of application solution during the installation process. You can cut the blade down to smaller lengths if desired.



TUBE SQUEEGEES



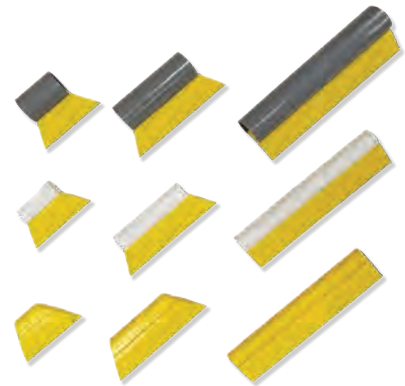
FUSION BLACK TURBO
82 durometer. Recommended for paint protection films and films with a softer hard coat.



FUSION RED TURBO
95 durometer. Super hard, recommended for thick vinyl applications and window films.



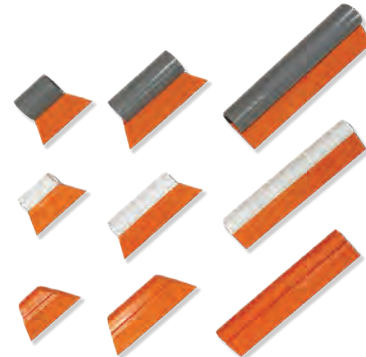
FUSION GREEN TURBO
80 durometer. Recommended for paint protection films and films with a softer hard coat.



FUSION YELLOW TURBO
85 durometer. Recommended for vinyl applications and areas that require more pressure.



FUSION PINK TURBO
77 durometer. Super soft, recommended for paint protection films and cleaning.



FUSION ORANGE TURBO
92 durometer. (Same durometer as Orange Crush) Recommended for most window films and vinyl applications.

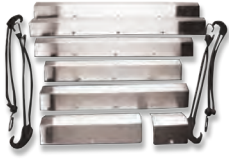
TOOL TIP

FUSION TURBO SIZES AND HANDLE OPTIONS:

- GT2083 3 1/2" Blade only
- GT2083-4 4" Blade only (Black only)
- GT2084 3 1/2" Blade with small white pvc handle
- GT2085 3 1/2" Blade with large gray pvc handle
- GT2085-4 4" Blade with large gray pvc handle (Black Only)

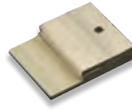
- GT2086 5 1/2" Blade only
- GT2087 5 1/2" Blade with small white pvc handle
- GT2088 5 1/2" Blade with large gray pvc handle
- GT2089 8" Blade only
- GT2090 8" Blade with small white pvc handle
- GT2091 8" Blade with large gray pvc handle

INSTALLATION ACCESSORIES



GT130 GASKET WIZARD

This device is used to carefully pull back gaskets for easy film-to-glass installations below the gasket. Rub rails are located at the base of all automotive door window glass and are used for weatherproofing the openings between the glass and the door structure. Many installers find the Gasket Wizard helpful, even without the use of the bungee cords.



GT944 AUTOMOTIVE GLASS EDGE TRIMMER

Use along the top edge of roll down windows for a precise "micro-edge" finish (1/8"). Use GT137 as a replacement blade.



GT033 RED DEVIL SQUEEGEE

Flexible squeegee that is great for tight corners and maneuvering around gaskets.

GT191 THE EDGE TOOL

A convenient trim guide or use the curved edge to pull back gaskets.

TOOL TIP

Tinting automotive windows is progressively more challenging. View the different tools to assist you in "tucking" the film under the door panel.



GT132 HOOK TOOL

Use this tool to pull back on rubber gaskets to tuck film below the seal.



GT135 BLADEATER

Designed for professional installers, the BLADEater holds your knife safely and securely, and allows you to easily snap and discard blades into the replaceable well. Once the well is full, simply toss the well, blades and all.

GT134 BLADEATER REPLACEMENT WELL

Replacement well for BLADEater.

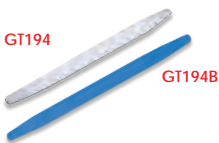


GT1004 OLFA DC4 BLADE DISPOSAL

Blade disposal unit that can be emptied and reused.

TOOL TIP

You don't want to leave behind discarded blades on a job site for a potential injury later. Safely snap blades into a disposal unit.



GT194 GASKET PUSH STICK
GT194B BLUE GASKET PUSH STICK



GT176 WAIST APRON

Heavy-duty waist apron for easy access to tools while on the job.

GT1080 ERGODYNE WAIST APRON

13 pocket tool apron.



SS-MINI SOAK SHIELD-MINI
SS-OG SOAK SHIELD-ORIGINAL
SS-XL SOAK SHIELD-XL

SS-INSTALLER SOAK SHIELD-INSTALLER SET
Soak Shield is tucked between the glass and the deck to reduce the chances of water damage to electronic parts during film installation. SS-OG is 5-6' long depending on stretching. SS-XL is 18" longer than the SS-OG for larger SUVs and trucks. SS-Mini is the same length as the OG only 30% thinner.



GT2029 SHANK

Shank is a great tool for getting under tight moldings.

INSTALLATION ACCESSORIES



GT251N WAGNER HT3500 DIGITAL HEAT GUN
 This model allows you to heat shrink in low or high fan speeds and has a variable temperature setting to fine tune the amount of heat needed for a specific application. (120 volt)



GT250 FURNO 300 DUAL TEMP HEAT GUN
 Furno 300 Dual Temp Heat Gun with high, medium, low settings. (120 volt)



GT2122 FUSION AFTERBURN TAPE
 This amazing product is self-adhering, meaning it bonds to itself with no adhesive. When it's removed, there is no leftover glue residue. Apply it to anything and everything! Torch tips, heat guns, tools, steamers, and more! The list is endless! This tape stretches up to 300% and molds perfectly to odd shaped items. High heat resistance up to 500 degrees Fahrenheit (about 260 degrees Celsius) with only one layer applied. Double or triple your layers to increase your level of heat resistance and protection!



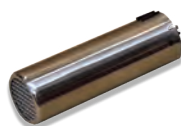
GT979 KEVLAR HEAT GLOVES (PAIR)
 Heat-resistant gloves great for use during heat shrinking.



GT921C JIFFY STEAMER J2W REPLACEMENT BOTTLE
 Replacement bottle for the J2W Jiffy Steamer (GT921).



GT270 MAX FLUX HEAT GUN
 The Fusion Max Flux Heat Gun is the first heat gun specifically designed for the window film industry. Offers a style that fits perfectly in the nook of your arm for precision handling. The 26 CFM gives you the ability to spread the heat exactly where you need it. With an adjustable heat gauge from 750 - 1000 degrees (Fahrenheit) this heat gun is a good choice for any job. Includes a full roll of Fusion Afterburn Tape in the box and pre-installed! (120 volt)



GT271 MAX FLUX HEATING ELEMENT
 Heating element replacement for the Max Flux Heat Gun.

GT921B JIFFY STEAMER J2W REPLACEMENT FUSE



GT2015 JIFFY STEAMER J4000W STEAMBLADE
 The J4000W has a large 1 gallon internal water reservoir and provides 2 hours of continuous steam before refilling. Go from PREHEAT mode to full steam power in just two minutes. Has a flexible 7.5' hose for easy maneuverability on the job and an angled 9" aluminum steam head that concentrates steam into a targeted area for precise removal. Steam-resistant nitrile gloves included in each unit. Heats up to 180°F (120 volt; alternate voltage available upon request).

GT921 JIFFY STEAMER J2W FILM REMOVER
 Impact resistant, with a 1300 watt heating element and heats up in two minutes with 2 hours of steaming per filling. Great for removing film and adhesive from vehicle rear windows. Heats up to 165°F (120 volt; alternate voltage available upon request).

TOOL TIP

Jiffy Steamer will help prevent damaging defroster lines when removing film from rear windows. Besides making life easier, a Steamer will pay for itself in just a few jobs when you consider the considerable time savings.

MEASURE/MARK & TRIM



GT190GRY GRAY 5-WAY TRIM GUIDE
GT190BLK BLACK 5-WAY TRIM GUIDE
GT190W WHITE 5-WAY TRIM GUIDE
 Use these tools as a trim guide or wrap in paper towels and use as a bump tool. Each of these offers unique shapes and corners. The GT190 White even features a ruler.



GT991 1" RED FILM TAPE
GT990 3/8" RED FILM TAPE
 Features low-tack adhesive. Use to retape film rolls for storage. (60.1 yards per roll)



DOTRIX DOT MATRIX VINYL 16"X50'
 Gives the dot matrix area on cars a smooth finished look. Pressure sensitive adhesive requires no heat shrinking.

TOOL TIP

In addition to a trim guide, the GT190 5-Way Tools are also an effective squeegee, especially when wrapped with a low lint paper towel or cloth to absorb moisture along the border of the film.

TOOL TIP

Whether you're a novice or a professional, dot matrix on rear glasses are difficult to contend with for installers worldwide. Try the "Dotrix" product for the most problematic areas.



GT157 1/2" BLACK OUT TAPE
GT158 1" BLACK OUT TAPE
GT159 1 1/2" BLACK OUT TAPE
 Black matte vinyl used to hide light gaps along edges of film installations. (150' per roll)



GT981 DO NOT ROLL DOWN STICKER
 Perfect as a reminder on new auto installs. Features low-tack adhesive. (1000 per roll)
GT1096 DO NOT ROLL DOWN TAPE
 Approximately 200 stickers per roll.



GT078-75 3/4" BLACK ACRYLIC FELT
GT078 1 1/2" BLACK ACRYLIC FELT
 Helps reduce scratching of automotive films on some vehicle roll down windows. (50' per roll)



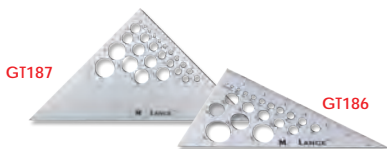
GT076 FILM OPAQUER PEN - THIN POINT
GT077 FILM OPAQUER PEN - BROAD POINT
 Used by installers to hide fine line mistakes in trimming which causes light intrusion at the film edge.



GT075 YELLOW FILM MARKER
GT2031 WHITE FILM MARKER
 Handy for 3 basic purposes:
 1. Marking film prior to installation of windows with unusual shapes (arches, trapezoids, etc.) which must be cut to approximate shape before the final "lay-up".
 2. Circling a contaminant (hair or fiber) before pulling back the film to remove it.
 3. Marking film edges to check for glass movement on side roll-ups during the trimming process. Yellow grease mark easily wipes away.

TOOL TIP

Application of felt tape has become a popular solution to the familiar "scratching" problem on some vehicle roll down windows.



GT187 12" TRIANGLE
 45/90° with circle templates.
GT186 8" TRIANGLE
 30/60° with circle templates.



GT182 36" STRAIGHT RULER
 Imperial measurements including 1/8ths & 1/16ths.

SPRAYER & ACCESSORIES



GT090 SPRAYMASTER BOTTLE & TRIGGER
An overall heavy-duty sprayer, this spray bottle comes with a 5 year manufacturers warranty and is chemically resistant. It is equipped with a strong trigger and holds 32 ounces.



GT096 POLYSPRAY 2
This pressurized spray bottle holds more solution than the 32 oz. bottles and reduces "finger-fatigue" eliminating the need for pumping while spraying via a simple trigger. Handy for large windows and long duration sprays. Has an adjustable spray nozzle. (1.25 liters)



GT1067 MERCURY PRO+ BOTTLE & TRIGGER
The next generation in spray bottles, the Mercury PRO+ features viton seals and a double action pump that sprays both when you pull back and when you release the trigger giving you more liquid with each pull. This lightweight ergonomic trigger/bottle combo holds up to 1 liter (33 ounces) of fluid.



GT097 32OZ. BOTTLE
Empty 32 ounce bottle only.

GT1008 IMPACT JR. PUMP-UP SPRAYER
Pressurized spray bottle that holds 48 ounces and reduces "finger-fatigue" eliminating the need for pumping while spraying via a simple trigger. Has adjustable spray nozzle.

GT1067R MERCURY PRO + SUPER 300 SPRAYER
360 degree sprayer that allows continual spray at all angles, sideways or even upside down which uses up all the product in the container. Double action trigger for a constant fine spray. Viton® seals are resistant to most common chemicals and detergents. Level indicator embossed on container marked in ML and pints.

GT098N MAXI TRIGGER SPRAYER
An industry staple. Ergonomic trigger with high output and durability.



GT1038-HG GILMORE NOZZLE & HOSE ASSEMBLY
15' flex line hose and Gilmore nozzle assembly for 3 and 5 gallon stainless steel tanks.

GT1038 GILMORE NOZZLE
Use with flex line hose. (Does not fit on GT101-HG hose)



GT101N 5 GALLON SS TANK
GT1029 3 GALLON SS TANK
Deluxe pressure sprayer for mounting solution in a stainless steel tank. Hose can reach up to 25' in length. Fill with solution and pressurize with air from any compressor. Curly, flexible hose reaches into cars or stretches to go up a ladder with you.



GT101-H REPLACEMENT SPRAY GUN
Replacement nozzle for GT101N and GT1029. (Does not fit GT1038-HG hose)

GT101-HG 25' REPLACEMENT HOSE AND SPRAY GUN
Replacement hose and nozzle assembly for GT101N and GT1029.



GT101G 5 GALLON SS TANK
This pressure sprayer has a 15' flex line hose with a brass tip nozzle. The no curl hose allows for less tension when maximizing the reach. A great sprayer for any type of installation.

TOOL TIP

Always clean your tanks and sprayers after 48 hours of use to keep contamination down. Don't forget to clean the filters!

CLEANING/PREP & CHEMICALS



GT715 SPRAYWAY GLASS CLEANER-19 OZ

Ammonia free, film-friendly aerosol spray used for cleaning film surfaces after installation. Can also be used as an adhesive remover when left to soak.



GT735 FILM-ON CONCENTRATE

1 quart concentrate mounting solution. Use for pressure sensitive adhesives and sputtered copper films.



GT733 DIRT-OFF CONCENTRATE

1 quart concentrate cleaning solution. Use for interior automotive window cleaning. Great for removing oily deposits on automotive glass. Dirt-Off can also be used as an adhesive accelerant to give additional tack for dot matrix areas.



GT2095 ATR SOLUTION-Quart

Highly concentrated window film adhesive remover. Dissolves adhesive on contact. Ready-to-use.



GT162P EASY STRIPPER II ADHESIVE REMOVER-GALLON

Used to soften adhesive left on glass. Ready-to-use.



GT1071 SUPER STRIPPER ADHESIVE REMOVER-GALLON

A highly concentrated, ready-to-use adhesive remover.

TOOL TIP

After installing film, be sure to clean and polish it with GT715 Sprayway Glass Cleaner. Offering glass cleaner is a great sales add-on.

TOOL TIP

When mixing mounting solutions, it is recommended that you use filtered water for best results.



GT2111



GT2112

GT2111 FUSION EPIC ORANGE ADHESIVE REMOVER-QUART

GT2112 FUSION EPIC ORANGE ADHESIVE REMOVER-GALLON
Epic Orange Adhesive Remover is specifically formulated to break down adhesive used in window films, paint protection films and vinyl. Simply spray the desired area and watch the adhesive breakdown. No alcohol and no ammonia!



GT2093



GT2094

GT2093 FUSION ALL TYPE-GALLON
GT2094 FUSION ALL TYPE-1/2 QUART

Clear, clean mounting solution with no unnecessary ingredients. Fusion All Type is safe for use on all films and all adhesives. Use on any Window Film, PPF, or Vinyl. Get more for your money with the conservative mixing ratios and easy to use built-in measuring cup (1/2 QT bottle) and dispensing pump on (1 gallon jug).



GT714 X-100 APPLICATION SOLUTION-GALLON

Cleaning and application concentrate for most dry adhesives. The mild acid formulation makes this a great cleaning agent for glass contaminated with oil, grease or dirt. Recommended mixture is 1 ounce per 1 quart of water. Not to be used with copper or silver based films.

CLEANING/PREP & CHEMICALS



GT2013 TINT SLIME-GALLON
GT2022 TINT SLIME-32 OZ
 Tint Slime is a window tint mounting & cleaning solution. Tint Slime can be used to install automotive window tint, paint protection film, flat glass film, and vinyl. Tint Slime is free of particulates and won't separate. Tint Slime is safe for use on interiors, biodegradable, and of course, tint safe. Concentrate; mix 1 ounce per 1 gallon of water.



GT2013U TINT SLIME ULTRA-GALLON
GT2022U TINT SLIME ULTRA-32 OZ
 Tint Slime Ultra is a higher rated slip designed to function in high heat and high humidity installs. Tint Slime Ultra is not designed to perform as well as regular Tint Slime in climate controlled areas. Mix 1 ounce per 1 gallon of water.



GT2119 SPIDER SPIT-GALLON
 A specially created formula for application of PPF and wet install vinyl films. Contains no particulates, no degreasers, lanolin or harsh chemicals that weaken the performance of your products. Slips when you need it to and tacks quickly. Mixing ration: 1 ounce per gallon of water. Distilled water works best!

TOOL TIP

Always error on the side of caution when using chemicals. Be sure to protect your skin as well as any surfaces the product may come in contact with.



GT2010 TINT OFF-QUART
GT2009 TINT OFF-GALLON
 Ready-to-use and specially formulated for the window film industry to make tint removal a snap.



GT1040 RAPID REMOVER-GALLON
GT1039 RAPID REMOVER-32 OZ
 A non-toxic, water-soluble adhesive remover that breaks down and removes adhesive fast. Ready-to-use.



GT1041 RAPID TAC II-30 OZ
 Great adhesive promoter even in cold weather conditions. A great solution for dot matrix areas or vinyl products.



GT1035 BLUE SLIP UP-GALLON
 Slip agent to aid in window film installation. Mix 8 ounces with 1 gallon water to serve as a conditioner or cleaner.



GT1036 SIMPLE PINK ADHESIVE REMOVER-GALLON
 Adhesive remover. Can be used full strength or 2-3 parts water.

TOOL TIP

There are many ways to clean and prepare automotive glass, no matter what the circumstance always test the product of your choice in an inconspicuous area to prevent potential damage.

CLEANING/PREP & CHEMICALS



GT070 LOW LINT WIPES
Center Pull Towels, 2 Ply, 8" x 605', 660 sheets/roll, 3" core diameter.

GT072 WIPE DISPENSER
For use with GT070.



GT085 WHITE SCRUB PAD
GT085 THK 1" THICK SCRUB PAD
Great for cleaning windows prior to installation and prepping dot matrix areas.



GT1066 COPPER MESH PAD
The Copper Mesh Pad is for dot matrix prep ONLY! It will ABSOLUTELY scratch glass.



GT2120B SCRUB-IT BLUE W/BLUE PAD
GT2120G SCRUB-IT GREEN W/TAN PAD
The SCRUB-IT is a hand-held scrubbing tool that uses the leverage of the back of your hand to clean contaminants or adhesive residue from glass. The SCRUB-IT allows you to use your hand to reach in most places and scrub evenly throughout. Scrub-It is a one size fits all as it can be adjusted to all hand sizes with the attached velcro strap.

***Please make sure to check newer vehicles for factory coatings that are applied to the inside of the glass that might be damaged by the SCRUB-IT.**



GT2121B SCRUB-IT REPL. PAD-BLUE (10 PACK)
GT2121T SCRUB-IT REPL. PAD-TAN (10 PACK)
The SCRUB-IT replacement pads come in a 10 pack. The blue pads are more aggressive and used for removing adhesive residue from glass. The tan color scrub pads are great for every day cleaning and prep work. The pads are made of scratch resistant material but use with caution. Test on a small part of glass before use as not all glass is made the same!



GT071 SUPER PREP TOWELS
Virtually lint free usable wipes. 300' of cloth per box.



GT209 THE SCRUBBER
Used to reach behind speakers and brake lights. Scrub away adhesive along the bottom edges of sloped rear windows. Uses replaceable standard White Scrub Pads (GT085) cut 2" x 3". This tool is 3" by 15" long.

TOOL TIP

Low lint towels or wipes are a necessity for quality window film installations. Absorbent wipes are ideal for cleaning windows and covering hard cards for bumping or wicking around the film edge.

SLITTERS & ACCESSORIES



TOOL TIP

The GT911 Film Handler will reduce waste, save labor and help complete jobs in a more timely manner. They can also be wall mounted for use in automotive applications.

GT911 72" FILM HANDLER

The GT911 Film Handler comes standard with 2 each Cutter Head Assembly (GT912), 2 each 3" Roller Assembly (GT904) and one pack of blades (GT943).
LADDER NOT INCLUDED



GT940 FILM HANDLER REPAIR KIT

Repair kit includes two 2 1/4" springs, two thumb screws and one 5/8" spring loaded teflon tip screw.

GT943 FILM HANDLER REPLACEMENT BLADES

20 blades per cartridge.



GT912 FILM HANDLER CUTTER HEAD ASSEMBLY

This is the base and the swivel head of the blade holder.

GT986 FILM HANDLER BLADE HOLDER

The swivel head portion of the blade holder.



GT913 6" ROLLER ASSEMBLY

Use for security film on 6" cores. Comes with 12" risers to accommodate rolls of film on 6" cores. Sold as a pair (2).

GT904 3" ROLLER ASSEMBLY

Standard roller assembly on Film Handler. These are 6" risers and will accommodate film on 3" cores. Sold as a pair (2).



GT1012 1/4" SHIM FOR 6" HUBS

GT941 1/8" SHIM FOR 3" HUBS

GT942 1/4" SHIM FOR 3" HUBS

Sold as eaches (1).

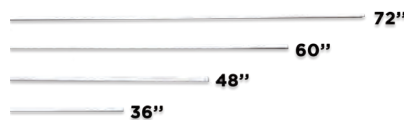


GT822 72" BOX SLITTER CHANNEL

72" aluminum U-channel for sliding over the edge of a film box to serve as a straight edge when making horizontal cuts (across the web width) after pulling film out to desired length. Handy for in-field work. Saves the cost of more expensive film cutters. Blade Holder (GT821) sold separately.

GT821 BLADE HOLDER FOR GT822

Use any 9mm blade. Blade not included.



GT1002 CLEAN CUT BOX SLITTER

Available in 36", 48", 60" and 72" sizes. Each bar has a ruler across the top edge for precise measuring and placement of the Cutter Head.
Cutter Head Sold Separately.



GT1002CH CLEAN CUT CUTTER HEAD ASSEMBLY

Cutter head assembly for the clean cut box slitter. The Clean Cut Cutter Head is machined from composite with two neodymium magnets that provide tremendous attachment to the Clean Cut Bar.



GT1002B CLEAN CUT REPLACEMENT BLADES

A five pack of replacement blades for the Clean Cut Cutter Head (GT1002CH).



GT1002T CLEAN CUT BOX TRAY

Allows film boxes to be mounted on top of a ladder.

TOOL TIP

To prevent damage to your Film Handler cutter head/blade holder, always move the blade holder from the base not by the swivel head.

METERS



GT922 MT1581 NON-CONTACT THERMOMETER WITH LASER
 Reads temperatures of solid surfaces. Demonstrate difference once window film is applied to glass with new reading of solid surface. Not to be used on glass. Powered by two AA batteries. (included)



GT2020 HEAT SHEET DEMO CARD
 Vibrantly changes color when it encounters heat. To demonstrate heat blocking capabilities of your glass or film, use the Demo Card in combination with a heat lamp.

GT2019 HEAT SHEET ACRYLIC STAND
 Used to hold your Heat Sheet Demo Card in place to show heat transfer.



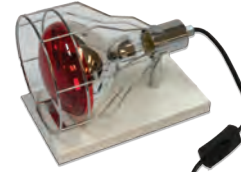
GT963 UV LIGHT SOURCE LAMP
 Excellent tool to demonstrate, measure or show how much UV window films keep out. Powered by 4 "AA" alkaline batteries (NOT included).



GT976 GLASS SAMPLE SET
 Conduct your sales demonstration effectively by including glass samples to help illustrate the benefits of film over standard glass. Includes 2 clear single pane, 2 clear IG and 2 low-E sets. Now 7" sample panes.



GT961 INSULATED GLASS THICKNESS & GAP GAUGE
 Used to measure glass and air space thickness in sealed insulating glass units. Carrying case included. Powered by two standard "AAA" alkaline batteries (included).



GT962N HEAT LAMP UNIT
 250 watt infrared heat lamp with metal cage for great tabletop presentations. Powered by 110 volt power cord. (Plug in).



GT2064 ENFORCER II
 The TM1000 Enforcer II is a light weight and pocket sized automotive tint meter. It comes equipped with a coin cell battery that will last for up to 2500 uses and is auto calibrating. Measures VLT on roll down windows only.



GT238 TM2000 INSPECTOR II
 The TM2000 Inspector II is the newest in **two-piece** light meter technology allowing you to measure VLT on ALL windows in vehicles with auto calibration accurate to within +/- 2%. This meter is 75% smaller than older models and carries a 1 year manufacturer's warranty.



GT2035 TINT-CHEK TC1800 AUTOMOTIVE METER
 Measures visible light transmission (VLT) on roll down windows. A smaller meter that fits comfortably into a shirt pocket. Tremendous reliability, ignoring ambient light. Calibrated to a NIST traceable standard.



GT2036 TINT-CHEK + TC2800 AUTOMOTIVE METER
 Measures visible light transmission (VLT) on roll down windows. Includes ALL the benefits of the TC1800 (GT2035) plus features a backlit LCD display making it much easier to read in low light conditions. Reads to the nearest tenth percent for greater accuracy. Calibrated to a NIST traceable standard.



GT239 TINT CHEK PRO TC3800 AUTOMOTIVE METER
 Measures visible light transmission (VLT) of automotive glass as well as any glass/film up to 1/4" or 6.5mm thick. The **two-piece** design allows for testing of the windshield, as well as rear and side windows. A single, extremely long lasting, 9-volt alkaline battery powers the electronics.



GT975 STRENGTHENED GLASS DETECTOR
 Allows users to confirm if glass has been strengthened. The detector can test single panes of glass or multiple panes in a window at a single time, and from a single side.

METERS



NOT ALL ITEMS SHOWN ARE INCLUDED IN KIT



GT974SOFT PROFESSIONAL METER SALES KIT W/CASE

Our UV & Solar Sales Presentation Kits offer a single source for convenient and convincing sales demonstrations. Kit Includes: GT968 Digital BTU & Trans-Meter, GT962N Heat Lamp Unit, GT973 UV Meter, GT963 UV Light Source Lamp, GT971 Soft Case with Strap.

GT973 UV SENTRY METER

Position the meter facing the UV source, such as sunlight or a heat lamp (GT962N), and turn the meter on. Place various materials between the meter and the UV source and the resulting UV Transmission percentage will be displayed. Powered by a 9-volt alkaline battery (included).

GT971 SOFT CASE



GT977

GT960

GT967 SP1065 DIGITAL BTU SOLAR POWER METER

This wide spectrum digital meter measures solar radiant energy intensity directly transmitted through glass (or the film-glass combination) in units of BTUs per square foot per hour or watts per square foot. Effective tool showing the relative effectiveness of various films in blocking solar radiant heat. Especially useful for showing how a very dark dyed film may allow far more energy to pass through than a much lighter metallic film. Can be switched to read in metric units. Powered by a 9-volt alkaline battery (included).

GT968 SP2065 SOLAR TRANSMISSION & POWER METER

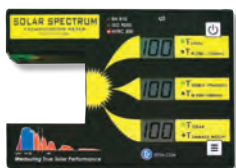
Use this meter to evaluate solar performance. It provides excellent resolution, reading low light conditions more accurately than competitors, with no need for adjustments. The easy to read digital display toggles between power and transmission percentage mode. It's small, portable, and convenient to take out in the field. Can be switched to read in metric units. Powered by a 9-volt alkaline battery (included).

GT977 XM1400 SOLAR & UV TRANSMISSION METER

The XM1400 is able to calculate the Solar & UV Transmission percentages of glass, film, coatings, laminates or other materials.

GT960 LOW-E COATING DETECTOR

Detects the presence and location of thermal resistant coatings (LOW-E) used on energy efficient single and dual pane glass. Never requires calibration. Powered by a 9-volt alkaline battery (included).



GT2034 SS2450 SOLAR SPECTRUM TRANSMISSION METER

This device is the most accurate meter to date. It is the only meter calibrated to ISO9050, NFRC300 and EN410 standards. Effortlessly demonstrate six performance characteristics at a time including two IR measurements: UV, VIS, SOLAR, IR 900-1000 nm, and IR 780-1780 nm ensuring the complete picture of a window film's performance. Simply slide the glass sample into the opening and see the resulting values displayed. No additional light sources are needed. Everything is self-contained in a single convenient package to visualize the true performance of a glazing system; this meter is a must. Glass samples not included.

GT982 SPECTRUM DETECTIVE METER

Displays three ratings at a time: UV, Visible Light, and Infrared transmission values. Carrying case included. Powered by a 9-volt alkaline battery (included). Glass samples not included.



 **SUNCONTROL**[®]
Window Films

 **SOLCONTROL**
WINDOW FILMS

ADDRESS

6666 W. Tidwell Rd
Houston, TX – 77092

WEBSITE

www.suncontrol.com

PHONE

USA : 713-895-7400
1-877-BUY-TINT (289-8468)

Canada : (1) 289-505-9955

South Africa : (23) 83-527-2875

EMAIL

Info@suncontrol.com
solcontrol@gmail.com