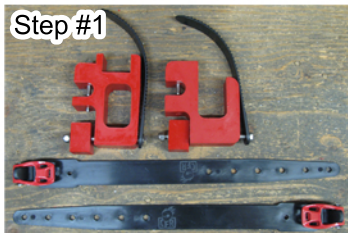




# Duel ski bracket kit Mounting Instructions



Step #1

## Step #1

Remove contents.  
1 front Duel ski bracket, 1 rear Duel ski bracket, 16" strap with ratchet X 2.



Step #2

## Step #2 Tools required:

7\16" open end wrench -- 3" socket  
ext. -- socket ratchet -- 7\16" socket  
17\64" drill bit -- 1\8" drill bit--Drill--



Step #3

## Step #3

Take the DD rack and secure on a work bench. Drill using 1/4" bit into DD rack in punched hole marks. 4 holes total. Two vertical and two horizontal. Finish drilling with 17/64" bit in all four holes.



Step #4

## Step #4

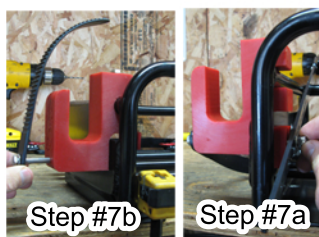
Take all hardware off of pieces.



Step #5

## Step #5

Put the front ski bracket on the DD rack like shown. Put a washer on the 3" bolt and push through top hole. Place washer and nut on bolt sticking through the bottom of bracket. Use ratchet with 7/16" socket, 7/16ths open end wrench and ratchet down the bolt. Do not tighten.



Step #7b

Step #7a

## Step #7

Grab the 4 1/2" bolt, 1/4" washer, ladder and strap. Put through the horizontal hole. (7b) Place spacer block on the inside threads sticking out. Put 16" strap with ratchet in the middle section of holes on strap. Finish with 1/4" washer and nylon lock nut. Hand tighten.

## Step #8

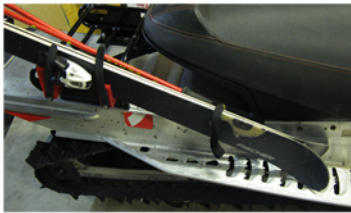
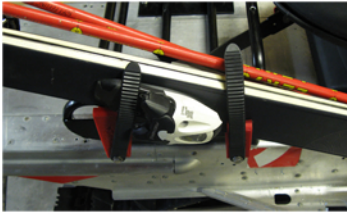
Repeat on rear bracket. Make the 16" strap as long as possible

## Step #9

Mount the DD rack to your snowmobile using directions provided.



# Dual ski bracket kit Mounting Instructions



A pair of skis and poles with the tips on the running boards



A pair of skis and poles with the tails on the running boards. Note the DD rack must be mounted 12 inches back from seat as shown. This will allow the rear binding clearance from snowmobile.



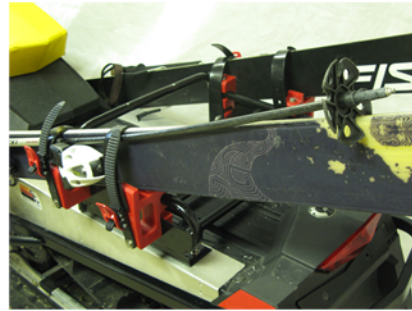
Step #12

## Step #10

Place skis and poles in rack as shown.(10a) The front binding of skis goes in-between the front and rear brackets on DD rack. The tips/tails of skis go on the running boards(10b) Try each way to see which way works better for your application. Poles are placed on top of skis. Straps go over skis and poles. Ratchet on strap goes in ladder on the side of brackets. Adjust strap sizes by putting bolt through hole in strap that gives the desired strap length. Ratchet down tight.



If you have a dual ski bracket on each side of your DD rack you can adjust straps so you can carry a ski and pole on each side. This distributes the weight of the skis better.



## Step #11

Use the ratchet with 7/16" socket and open end wrench and tighten all four bolts.

## Step #12

Go sledskiing A.S.A.P  
Snowmobiles are not designed to carry skis/snowboards.  
Slow down going on icy bumpy trails.

Questions or problems  
dave@cheetahfactoryracing.com  
1-877-894-1880