

# FOREST ROAD, NORTH LONDON

## MAGMA CASE STUDY

### SITUATION:

Working with JB Riney who were carrying out extensive reinstatement works on this crossroads in North London, we selected a cover that was directly in the wheel track and likely to get a huge amount of traffic traversing across it, the challenge was to make sure that the cover was removed, re-bedded and ready to open whilst working alongside other works within the same road closure.

### SOLUTION:

Once the cover was removed and the excavation cleaned out, the new cover was re-bedded on a CD534 compliant mortar, back filled with Hardmaster W615 and left to cure whilst we prepared the Permafyx L271 with 6mm aggregate. Despite the adverse weather we managed to complete the work, seal the top joint using our Ultracrack L270 and clean up with over an hour to go before the TM was lifted.

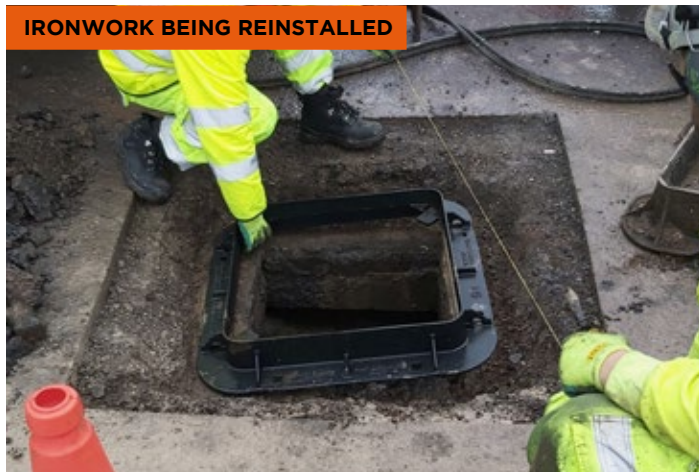
### SUMMARY:

It was great to engage with the onsite team and show them just how easy this type of reinstatement can be and by the time we had completed the works, the guys had really grasped the concept and said they would be more than happy to use this system for future works.

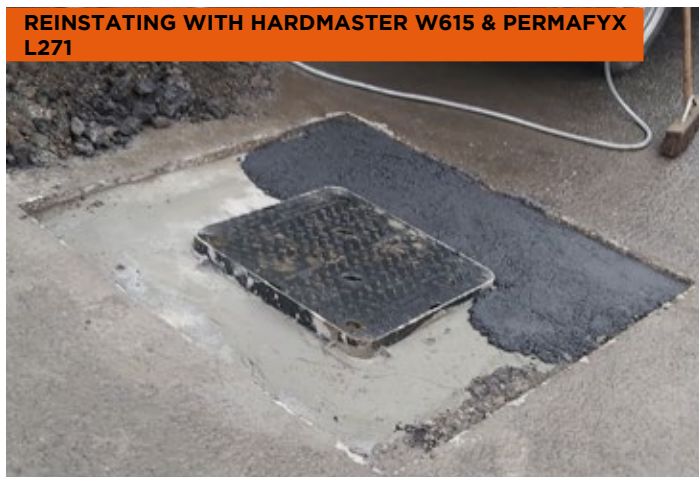
### SYSTEMS USED:

- HardMaster W615 Rapid Strength Flowable Concrete
- PermaFyx L271 (6mm) MMA Hard Wearing Surface Repair System
- UltraCrack L270 MMA Overbanding & Crack Repair kit

IRONWORK BEING REINSTALLED



REINSTATING WITH HARDMASTER W615 & PERMAFYX L271



FINISHED APPLICATION



#### MEON UK

+44 (0)23 9220 0606  
MAIL@MEONUK.COM  
MEONUK.COM

#### MEON IRELAND

+353 (0)1 840 7647  
INFO@MEONIRELAND.COM  
MEON.IE



**MEON**  
DELIVERING GREAT SURFACES