

# MACHINE GUIDE

## HOW TO CHOOSE THE RIGHT LINELAZER TIP

### OVERVIEW:

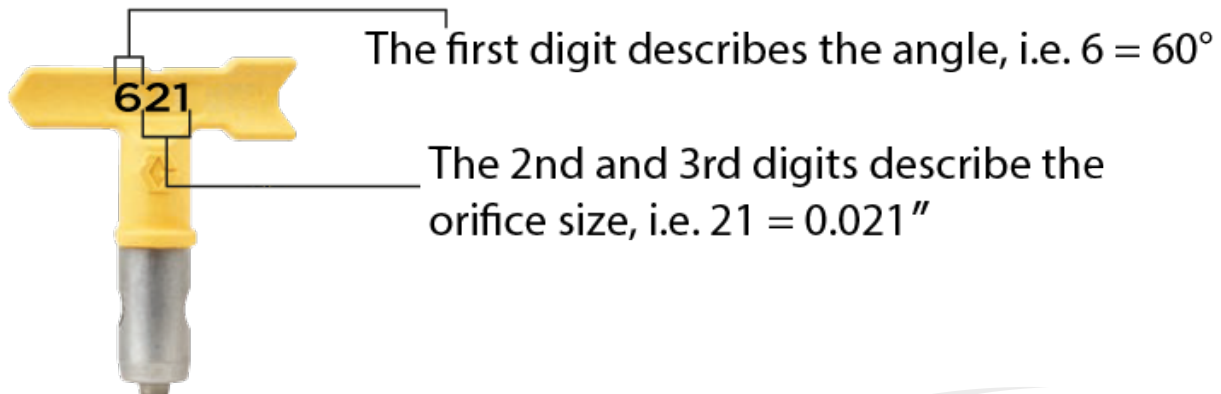
Graco tips are specially designed for Line Striping Equipment, Graco's LL5 spray tips create clean and laser-sharp lines with no fuzzy edges. LL5 tips spray heavy water based liquid to thin alkyd traffic paint and ensures consistent paint thickness, from edge to edge, with less overspray and long lasting lines.

### 1. Choosing The Right Tip

The first digit describes the angle, i.e. 6 = 60°.

Multiply first digit by 5 to get the actual fan width when spraying 30 cm away from the wall, i.e. 6 x 5 = 30 cm.

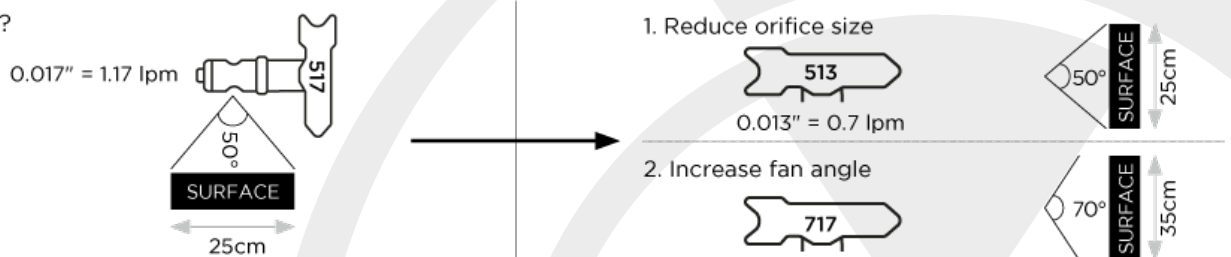
The 2nd and 3rd digits describe the orifice size, i.e. 21 = 0.021" .



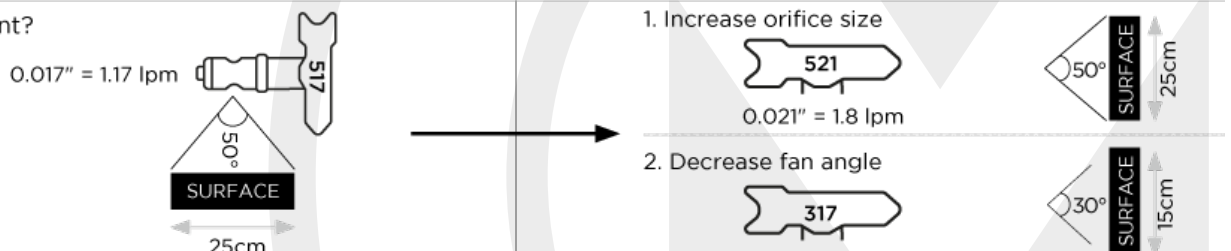
### 2. Adjusting To The Right Tip

Basic rule: when switching tips, adjust to the new fan width and new orifice size. Together. e.g.: 517 - > 619

Too much paint?



Not enough paint?



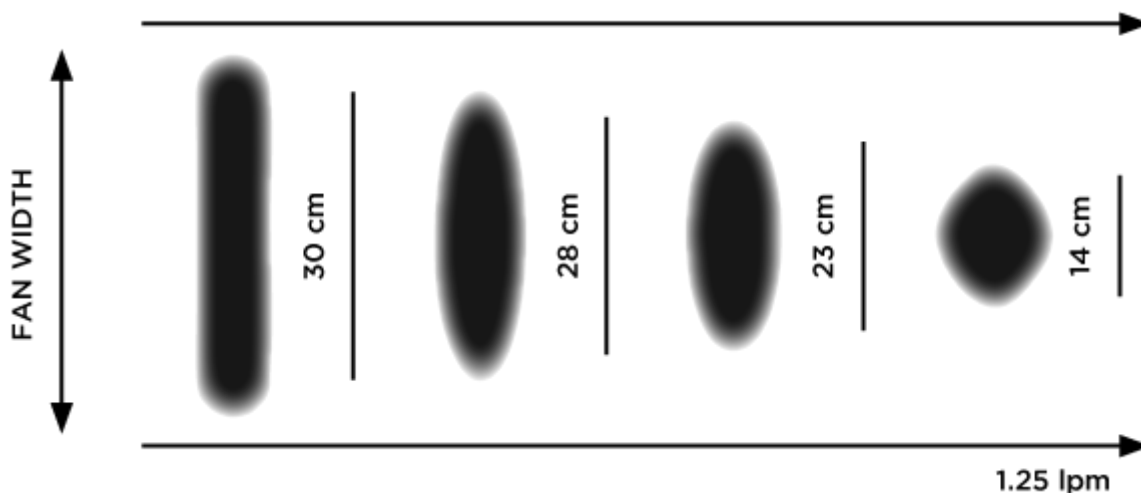
### 3. When To Replace a Tip

A spray tip controls the amount of fluid sprayed by using different orifice sizes. The shape of the orifice on the other hand, determines the spray pattern. The chart below explains the impact of tip wear on the quality of your job.

#### What is Tip Wear?

- 1) **FAN WIDTH DECREASES** = MORE PASSES NECESSARY = MORE LABOUR
- +
- 2) **ORIFICE SIZE INCREASES** = MORE PAINT COMES OUT = COSTING YOU MORE ON MATERIALS COST

**TOTAL: TWICE THE LABOUR!** + 30% MORE PAINT FOR THE SAME SURFACE!  
**INCREASED TIP WEAR:**



Fan Width - New Tip	Fan Width - Worn Tip
5cm	4cm
10cm	8cm
15cm	12cm
20cm	15cm
25cm	20cm
30cm	25cm
35cm	30cm
40cm	35cm
45cm	40cm

#### REMEMBER!

Preparation is key, if using a LineLazer ensure you have the compatible cleaner to the paint sprayed available immediately after use to extend the product life and ensure you have crisp lines.

#### MEON UK

- +44 (0)23 9220 0606
- MAIL@MEONUK.COM
- MEONUK.COM

#### MEON IRELAND

- +353 (0)1 840 7647
- INFO@MEONIRELAND.COM
- MEON.IE



**MEON**  
 DELIVERING GREAT SURFACES