

Commercial Gas range with under oven

SPECIFICATION SHEET

MODEL#: EM-4/6



MODEL # EM-4

Choose GAS TYPE When Placing Order

- LPG**
Liquid Propane Gas
- NG**
Natural Gas

Capacity

- EM-4 4 burners**
- EM-6 6 burners**

Specifications

- Stainless steel for front, Left & Right & Back Galvanized
- Cast Iron burner with power of 30,000BTU/H
- Cast iron grate
- **SABAF** thermostat gas valve for oven
- Oven temp range: 200°F -550°F
- Manual ignition
- Oven with enamel finishing easy to clean
- Height Adjustable leg

Standard Accessories

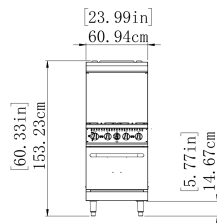
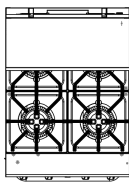
- Adjustable bullet leg
- Back slat with top holding shelf
- 2 pcs baking shelves/oven

Optional Accessories

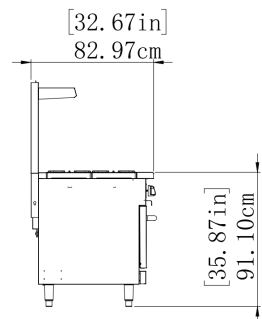
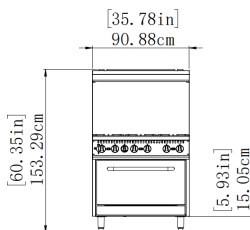
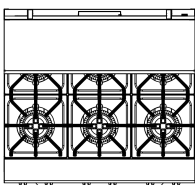
- Casters
- Pilot switch

PRODUCT DIMENSION CHART Model: EM-4/6

EM-4



EM-6



Model	Product Dimension	Heat Power	Heating Burner	Gas Consumption	Gas inlet Connection	N.W	G.W	Packing dimension
EM-4	24x32.67x60.33inch 610x827x1532mm	Burner:30,000 BTUx4 Oven:30,000 BTUx1	Burner: 4 Oven: 1	LPG: 1.699m3/h NG: 3.946m3/h	3/4" NPT Male	129kg	161.5kg	720X1010X890mm
EM-6	36x32.67x60.33inch 915x827x1532mm	Burner:30,000 BTUx6 Oven:30,000 BTUx1	Burner: 6 Oven: 1	LPG: 2.3792m3/h NG:5.524m3/h	3/4" NPT Male	170kg	204kg	1010X1010X890mm