

Parts List:

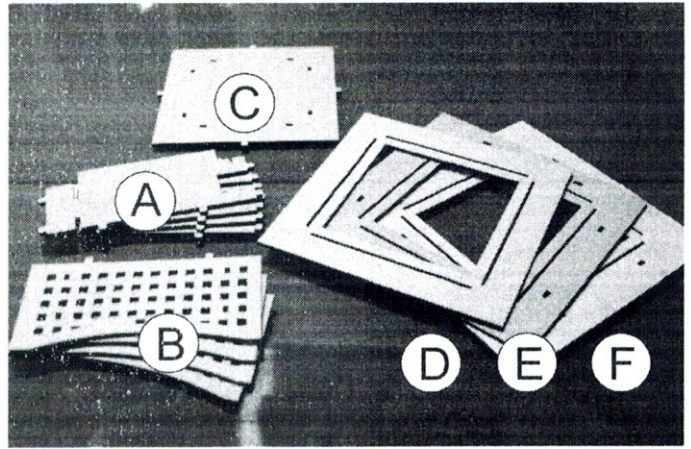
- A - x4 Inner Box sides
- B - x4 Outer Box Sides
- C - x1 Box bottom
- D - x1 Box Top (Small)
- E - x1 Box Top (Medium)
- F - x1 Box Top (Large)

Not Pictured:

- G - x4 Glass Panels

Not Included:

- H - x1 Fuel Cell



The Basics..

The Tabletop Fireplace is made up of 17 parts in a complete kit. It was designed for ages above 8 years old to assemble (adult supervision required for the glass). Although glue is not required, you may choose to make the frame more stable by permanently assembling the pieces with a bead of glue in all the fittings. (You should follow the order of the instructions carefully if so, as some parts might not be able to be assembled out of order).

Feel free to add any finish you want to the bare wood. A sealer for outdoors would be required. Paint or stain should work well. You might consider doing all the finish work

before beginning to assemble the parts. A light sanding will help make a smoother finish too.

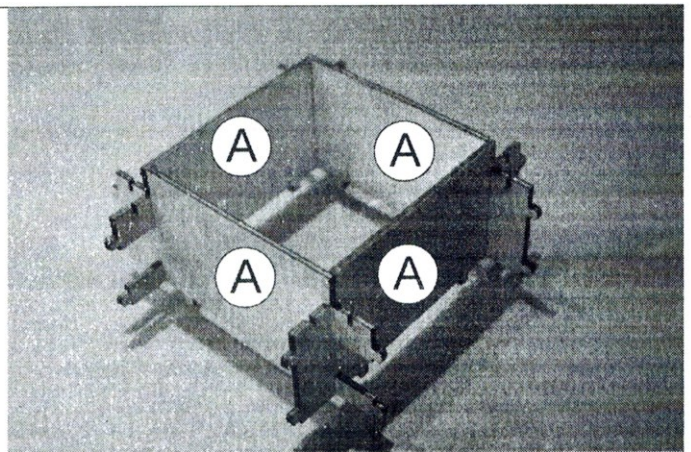
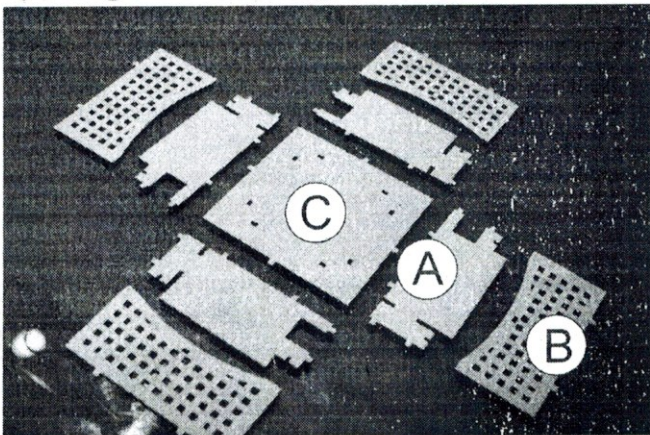
Fire and Fuel is involved, plus breakable glass. Take extra care in building this kit and displaying it in a safe place. The sand is necessary to keep the heat from doing any damage to the wooden base.

Do not let the flame reach the glass. Keep it under control to avoid cracking under extreme heat.

Caution: HOT GLASS looks just like cold glass. Be careful not to touch or move the unit while it might be still lit. Give it time to cool off before trying to do so.

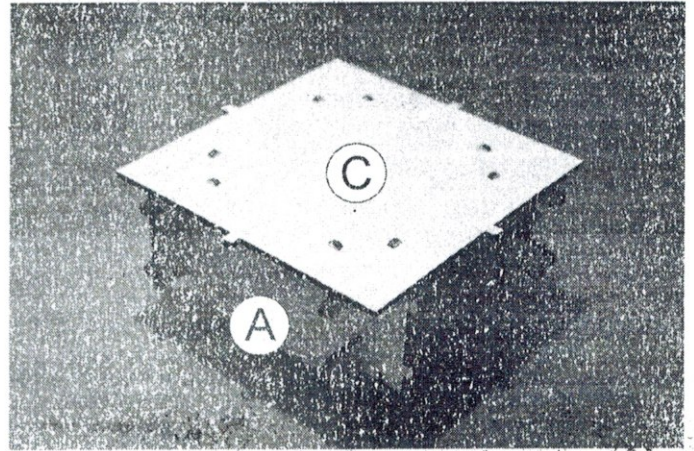
4 Sides to a box:

Start with all 4 Part (A) pieces and assemble them in the box shape seen here. Each end will line up with the other all going in the same direction. The snap on tabs will all line up along the bottom edge.



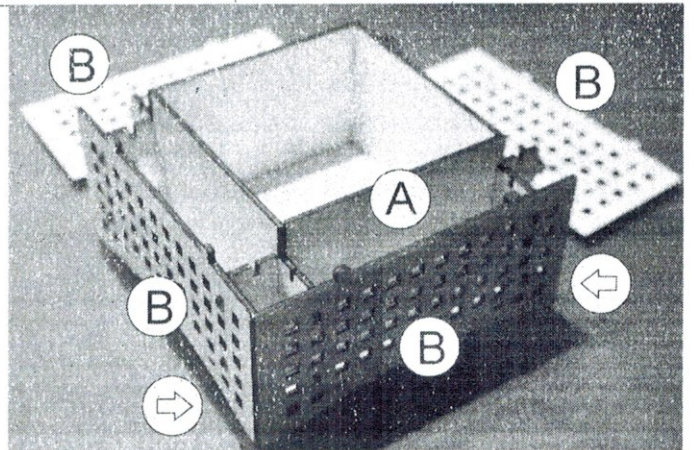
Add the base:

Flip the 4 sides over and pop on the base, Part ©. The snaps should align with the corresponding holes perfectly.



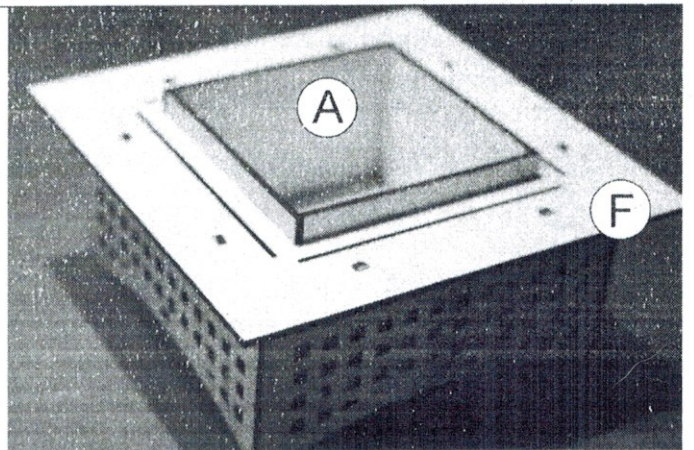
Snap on the sides:

Use all 4 side pieces, Part (B) to snap around each side of the box. There is most likely a "clean" side and a "laser burned" side. Choose which side you like best facing out, but be consistent all around.. the leading edge (shown by the arrow) on each piece will then face the same direction as you go around the box.



Add the Top:

The top section is made up of 3 pieces. Parts (D, E, & F). These line up from small, medium, to large. The Large piece, Part (F), snaps on the base first. Next add the Medium size piece, Part (E), then top it off with the cover, Part (D).



Complete the fireplace:

With the sand, fill inside the box about 1/2" bed for your fuel container to sit in. Place the can inside and continue filling with sand around the sides. This is very important to keep the heat of the fire from damaging the wood sides. Place a few stones around the edge of the metal container for looks.

Add the Glass sides, Part (G) into the slots around the top. The glass should slide down into the groove about 1/2". The stones should not be in direct contact with the flame AND touching the glass at the same time. Keep the flame low and not allow the glass to overheat around the top.

1man1garage.com

