

# 10K\_RT\_FLSH\_2 - Data Sheet

## DESCRIPTION

The 10K\_RT\_FLSH\_2 sensor is a Flush Mount Room Temp sensor that can be screwed directly into the drywall and painted over to become almost invisible to the occupant. This sensor provides precision room temperature sensing by using a highly stable and accurate thermistor element.



## FEATURES

- Useful where cosmetic appearance is important
- 0.2C (+/- .36F) Accuracy from 0-70C.
- White Case

## APPLICATION

The flush mount room temperature sensor is designed to be wall mounted indoors in applications where appearance is important. Once installed the sensor is barely noticeable and does not change the cosmetic appearance of the room.

## MOUNTING

- Step1: Drill a 1/2" hole in wall.
- Step2: Thread the wire from behind the wall out through the hole in the wall.
- Step3: Thread the wire through the sensor's case
- Step4: Connect the wire to the sensor pigtails.
- Step5: Use your hand to partially screw the case into the wall. (figure 1)
- Step6: Use large screwdriver to screw the case all of the way into the wall. (figure 2 & figure 3)
- Step7: Press the sensor face all of the way into the case, flush with the wall. (figure 4)

SPECIFICATIONS	
<b>Sensing Element:</b>	Thermistor (thermal resistor)
<b>Accuracy:</b>	0.2C (+/- .36F) from 0-70C
<b>Temp Range:</b>	-40C to 80C
<b>Temp Response:</b>	NTC 10K Type-2 Thermistor
<b>Connection:</b>	4" (10cm), 24 AWG pigtails
<b>Mounting:</b>	Directly in drywall
<b>Color:</b>	White plastic case

DIMENSIONS	
<b>Threaded Case Length:</b>	25.4mm (1in)
<b>Threaded Case Diameter:</b>	17.5mm (0.69in)
<b>Sensor Face Diameter:</b>	19mm (0.75in)
<b>Sensor Face Thickness:</b>	1.4mm (0.055in)

Figure 1



Figure 2

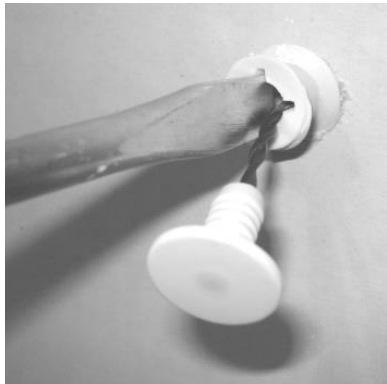


Figure 3



Figure 4

