

Approximate Measurements of *Galeamopus pabsti* (*G. pabsti*)

SMA0011

(Tschopp 2017)

Aiden H. Rouse

Note: All measurements were done by observational estimates and are subject to change

Skull (Reference 1-4)

Skull

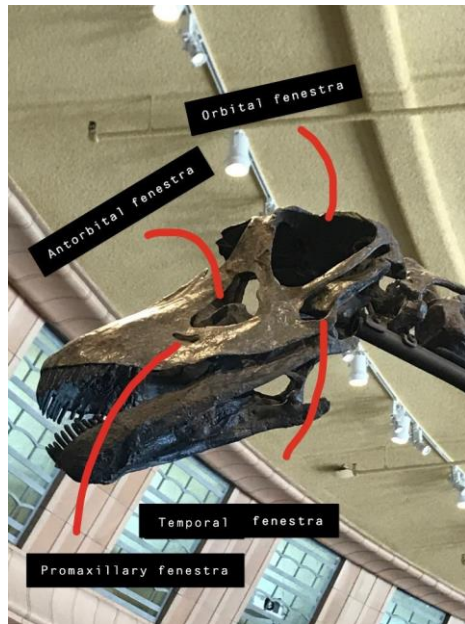
- Overall: 17” long and 8” tall at cranium
- Orbital Fenestra: 6” long and 4” tall at highest peak
- Antorbital Fenestra: 3.5” long and 3” tall at highest peak
- Temporal Fenestra: 6 1/4 “ long and 1” tall at distal end

Mandible

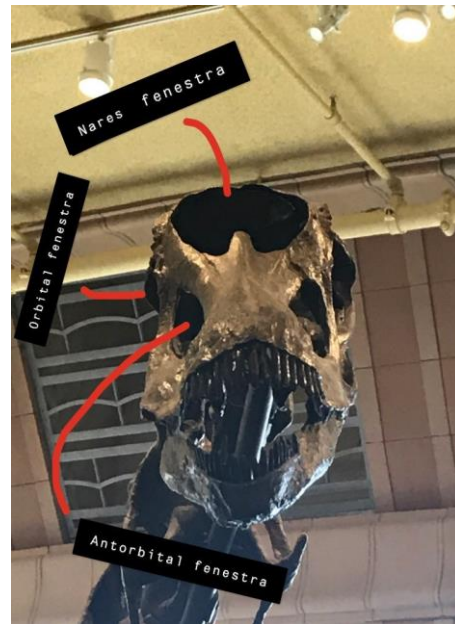
- 13-15” long and 2” tall at distal end
- 3.5” tall at symphysis

Teeth

- 1.5” sticking out of dentary and maxilla
- Smallest tooth at around 1/4”



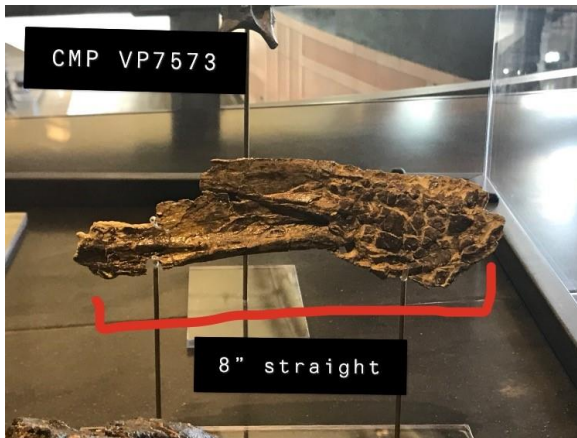
Reference 1



Reference 2

Surangular (CMP VP7573) (Separated from mount)

- 8" long and 2" tall
- 1" thick



Reference 3



Reference 4

Neck (References 5-6)

Notes

- 13 cervical vertebrae (15 including atlas and axis vertebrae)
 - CV5, 7, 9, 11 (Cervical rib), and 13 are present

Atlas (Replica)

- Centra: 1.5" long and 2" tall
- Neural Spine: 2" tall
- Zygopophysis Structure: 4" at curve

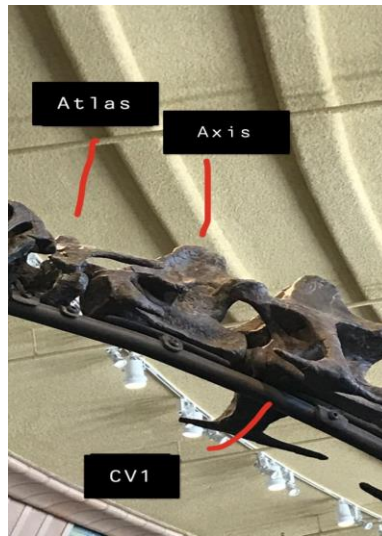
Axis (Replica)

- Centra: 7" long and 2" tall
- Neural Spine: 4" tall

CV1 (Replica) (Smallest)

- Centra: 10" long and 2.5" tall

- Neural Spine: 3" tall and 3.5" wide at base
- Cervical Rib: 7" long and ¼" wide



Reference 5

CV13 (Largest)

- Centra: 28" long and 6" tall
- Neural Spine: 8" tall and 11" wide at base
- Cervical Rib: 22" long and ½" wide



Reference 6

Dorsal Vertebral Column (References 7-9)

Notes:

- 10 dorsal vertebrae
- All dorsal vertebrae are present

D1 (Smallest)

- Centra: 9-10" long and 7" tall
- Neural Spine: 12" tall and 6" wide at base
- Neural Arch: 7.5" tall

D10 (Largest)

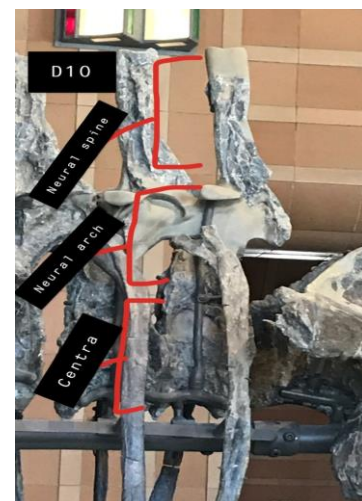
- Centra: 8" long and 9" tall
- Neural Spine: 14.5" tall and 5" wide at base
- Neural Arch: 12" tall



Reference 7



Reference 8



Reference 9

Forelimbs and Chest (References 10-15)

Notes:

- No sternal elements present on mount
- Only forelimb present is right humerus

Scapula (Left)

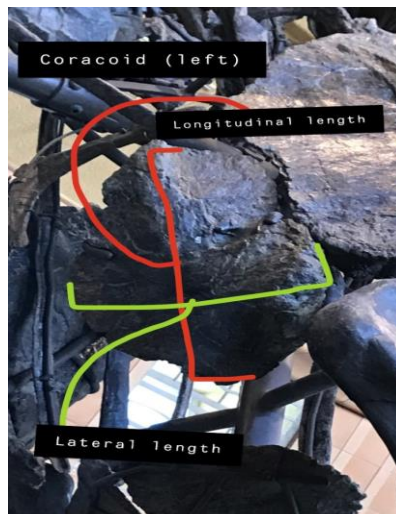
- Length: 45" long
- Longitude length of girdle: 26" wide
- Proximal end width: 15" wide



Reference 10

Coracoid (Left)

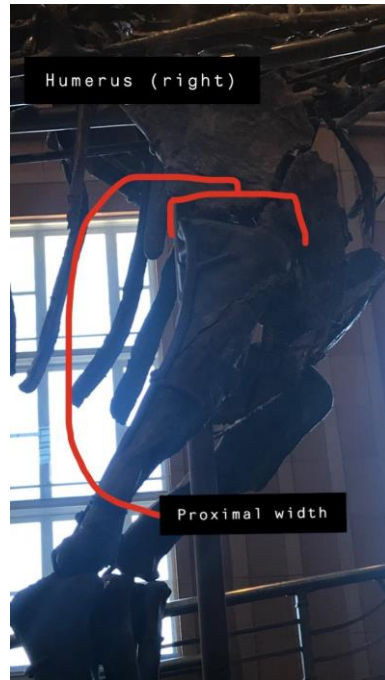
- Longitude length: 22-23" wide
- Lateral length: 20" wide



Reference 11

Humerus (Right)

- Length: 40" long
- Proximal end width: 14" wide
- Distal end width: 14" wide



Reference 12



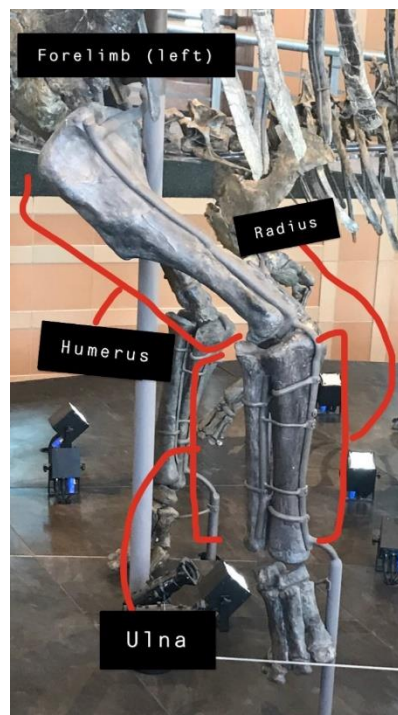
Reference 13

Radius (Right) (Cast)

- Length: 24" long
- Proximal end width: 7.5-8" wide
- Distal end width: 5" wide

Ulna (Right) (Cast)

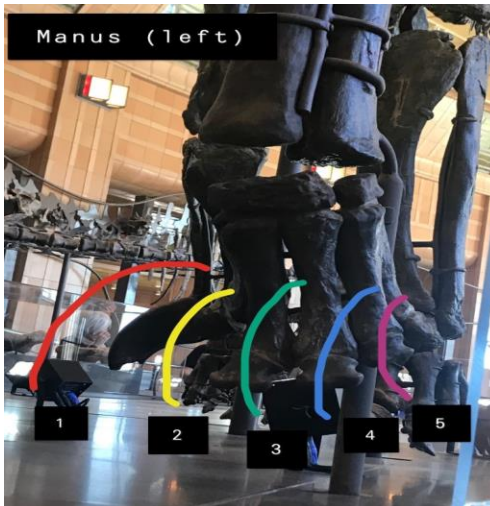
- Length: 24" long
- Proximal end width: 5" wide
- Distal end width: 4.5" wide



Reference 14

Manus (Left)

- MC1 (Proximal) length: 7" long
- MC1 (Proximal) width: 4.5" wide
- *Other medial carpal present was not visible to measure*



Reference 15

Sacral Area (References 16)

Notes:

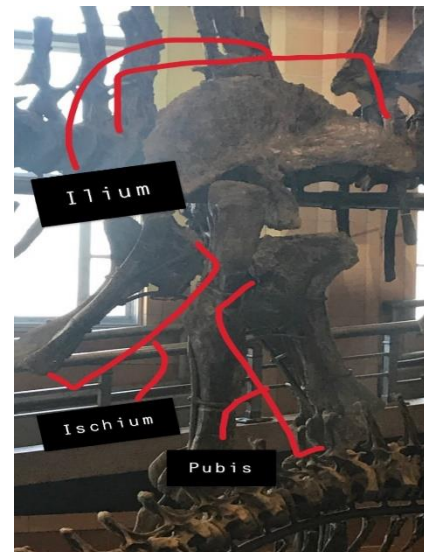
- Obstructed view of ribs and sacrum would restrict any comparable measurements
- 5 sacral vertebra

Ilium (Left)

- Length: 30" long
- Longitudinal width (w/o process): 16-18" wide
- Longitudinal width (w/ process): 28" wide

Ischium (Right)

- Length: 32" long
- Proximal end width: 15" wide
- Distal end width: 6.5" wide



Reference 16

Pubis (Right)

- Length: 27” long
- Proximal end width: 14” wide
- “Boot” width: 12” wide

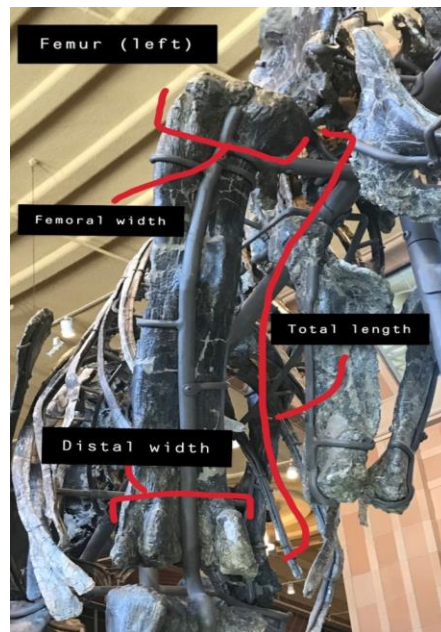
Hind Limb (References 17-22)

Notes:

- All limb/tarsal elements present on mount
- All measurements are based off left side elements

Femur

- Length: 40” long
- Femoral head width: 14.5” wide
- Distal end width: 12” wide



Reference 17

Tibia

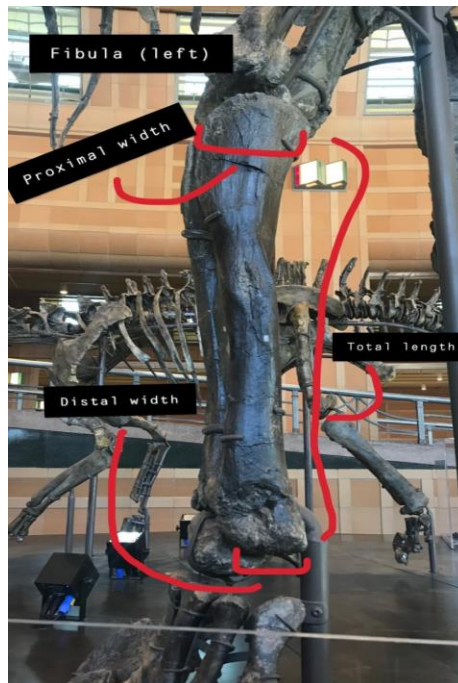
- Length: 30” long
- Proximal end width: 11” wide
- Distal end width: 6.5” wide



Reference 18

Fibula

- Length: 32" long
- Proximal end width: 7" wide
- Distal end width: 3" wide



Reference 19

Astragalus

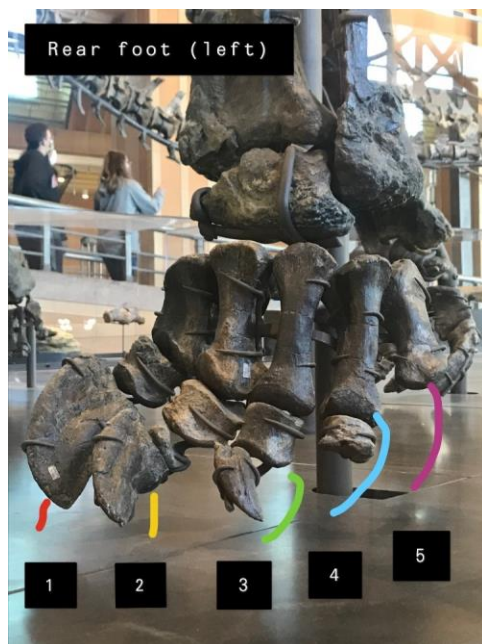
- Width: 7" long



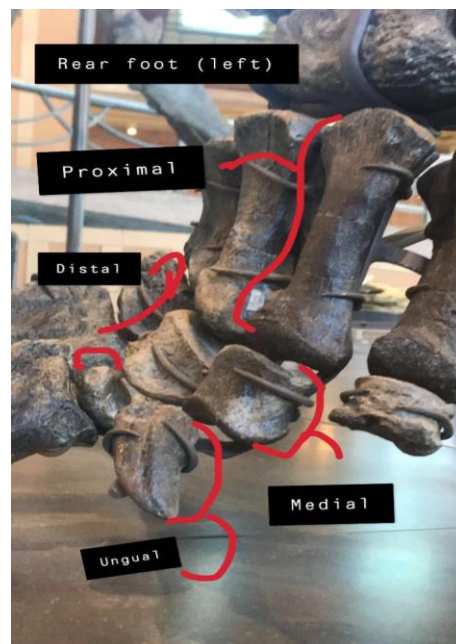
Reference 20

Rear Foot

- MT1 ungual length: 7" long
- MT2 proximal tarsal length: 5.5" long
- MT2 medial tarsal length: 2" long
- MT2 distal tarsal length: ½" long
- MT2 tarsal ungual length: 5" long



Reference 21



Reference 22

Tail (References 23-24)

Notes:

- 70 total caudal vertebrae (?)
- Missing CD5, CD25-39 and neural processes to CD3/4
- No clear presence of “caudal ribs”
- Caudal chevrons not recorded

CD1 (Largest)

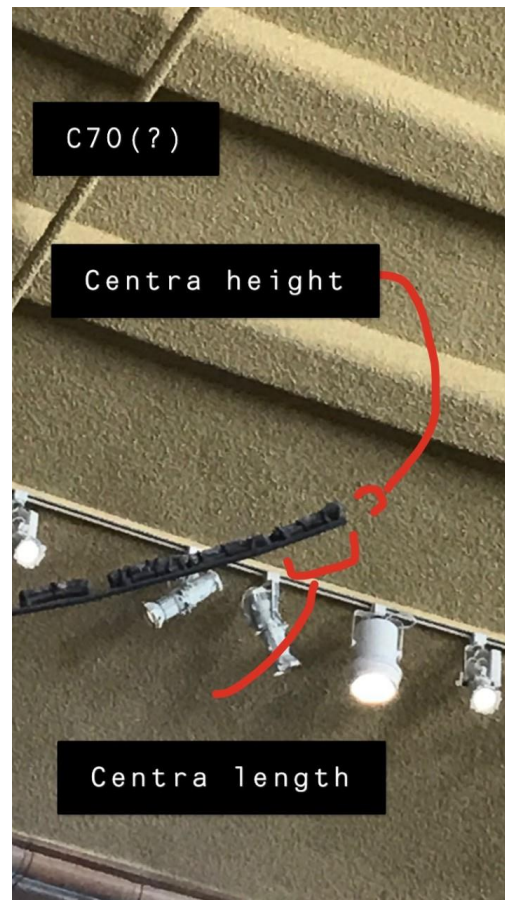
- Centra: 7” long and 8.5” tall
- Neural Arch: 8” tall
- Neural Spine: 18” tall and 4.5” wide at base

CD70 (Smallest)

- Centra: 3.5” long and ½” tall
- *No presence of neural arch or neural spine*



Reference 23



Reference 24