

# RawEdge™

For those seeking a more natural look, Coyote offers RawEdge™. This steel edging is uncoated and will oxidize and darken over time, allowing it to harmonize with the surrounding landscape.

**Dimensions:**

4" x 4' / 6" x 4' / 4" x 8' / 6" x 8'

**Average Thickness:**

.032" — .050"

- Suitable for straight or curved designs
- Made with a rolled top for safety
- Made of durable steel and left uncoated
- Available in perforated to promote drainage
- Made in USA
- Homekits contain 5 pieces and matching hairpin stakes



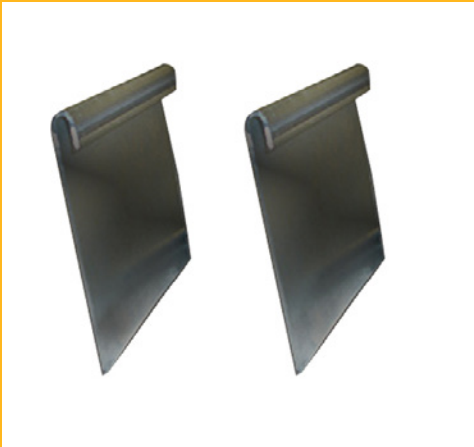
# Speed Clips™

Speed Clips™ provide a seamless connection between landscape edging pieces.

**Dimensions:** nom. 4-in x 3.5-in

**Average Thickness:** .05"

- Made with a rolled top for safety
- Uncoated to develop a darkened patina
- DIY - ships in boxes of 4 pieces
- PRO - ships in boxes of 250 pieces
- Made in the USA



<https://www.coyotelsp.com>

1-800-321-1115



[facebook.com/CoyoteLSP](https://facebook.com/CoyoteLSP)



[instagram.com/CoyoteLSP](https://instagram.com/CoyoteLSP)



[linkedin.com/company/coyote-landscape-products](https://linkedin.com/company/coyote-landscape-products)



[twitter.com/CoyoteLSP](https://twitter.com/CoyoteLSP)



[pinterest.com/CoyoteLSP](https://pinterest.com/CoyoteLSP)



[www.coyotelsp.com](https://www.coyotelsp.com)