



Tow-Trust Towbars

Important: Please read General Notes overleaf before fitting



Issue 3

TLAN5 LAND ROVER DISCOVERY SPORT (Vehicles without spare wheel)

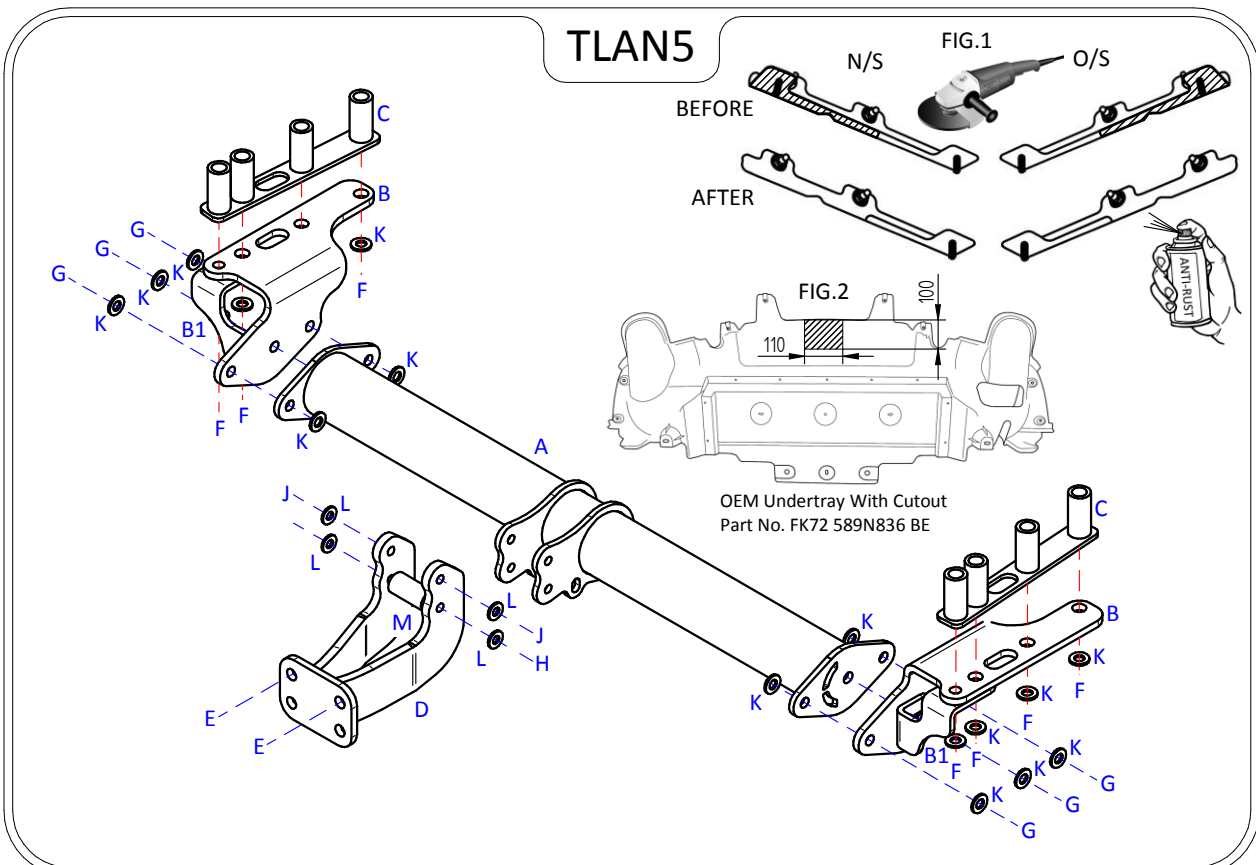
Item	Qty	Description	Item	Qty	Description
A	1	TLAN5 Crossmember	E	2	M16 x 50 Bolts & Nyloc Nuts
B	2	Handed Side Arms	F	8	M14 x 120 Bolts & S/P Washers
B1	2	Side Arm Support Brackets	G	6	M14 x 45 Bolts, 4 Nyloc Nuts & 2 S/P Washers
C	2	Tubular Chassis Kits	H	1	M12 x 130 Bolt (10.9) & Nyloc Nut
D	1	Extension	J	2	M12 x 45 Bolts (10.9) & Nyloc Nuts
			K	18	14 x 27 Flat Washers
			L	4	12 x 25 Flat washers
			M	1	30 O/D Spacer Tube 60mm Long

BUMPER REMOVAL:

1. Remove the rear light clusters / one fixing found inside the boot.
2. Remove the bumpers central cover / two fixings on the lower edge, this will reveal eight fixings securing the bumper to the vehicle.
3. Unclip the wheel arch trim and remove one fixing either side, remove two fixings found inside each wheel arch, one fixing either side of the boot opening and two fixings either side on the lower edge.
4. Carefully remove the rear bumper from the vehicle body.
5. Lower the exhaust and support to prevent damage.
6. Remove eight fixings to remove the undertray from the vehicle.
7. Remove the rear impact beam. (This is refitted with the Towbar assembly).
8. Remove the Towing eye mount from the O/S chassis. (This is not refitted with the Towbar assembly).
9. Remove the under tray mounting brackets from the inside face of each chassis and trim and refit (SEE FIG.1).

TOWBAR INSTALLATION:

1. Insert Items C into each chassis member and using Item F with Item K loosely fix Item B and B1 to each chassis member.
2. Using Item G with item K fix Item A between each side arm.
3. Using Item J with Item L and Item H with Item L fix Item D to Item A ensuring Item M is fitted between the lower fixing point.
4. Using Item E fix your desired ball bracket and wiring plate (Not supplied in this kit) to the Towbar face plate.
5. Fully tighten all fixings ensuring the Towbar is rigid, square and secure.
6. Cut the under tray and refit (SEE FIG.2) along with the rear impact beam, bumper and rear lights, rehang the exhaust.



Note:

1. Recommended Torque Setting for M12 Grade 10.9 -139 Nm. (For other Torque Settings see notes overleaf.)
2. Nose load limits and vehicle manufacturers trailer / caravan weight limits must be observed.