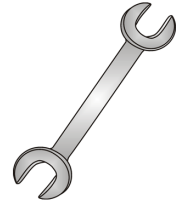




Tow-Trust Towbars

Important: Please read General Notes overleaf before fitting

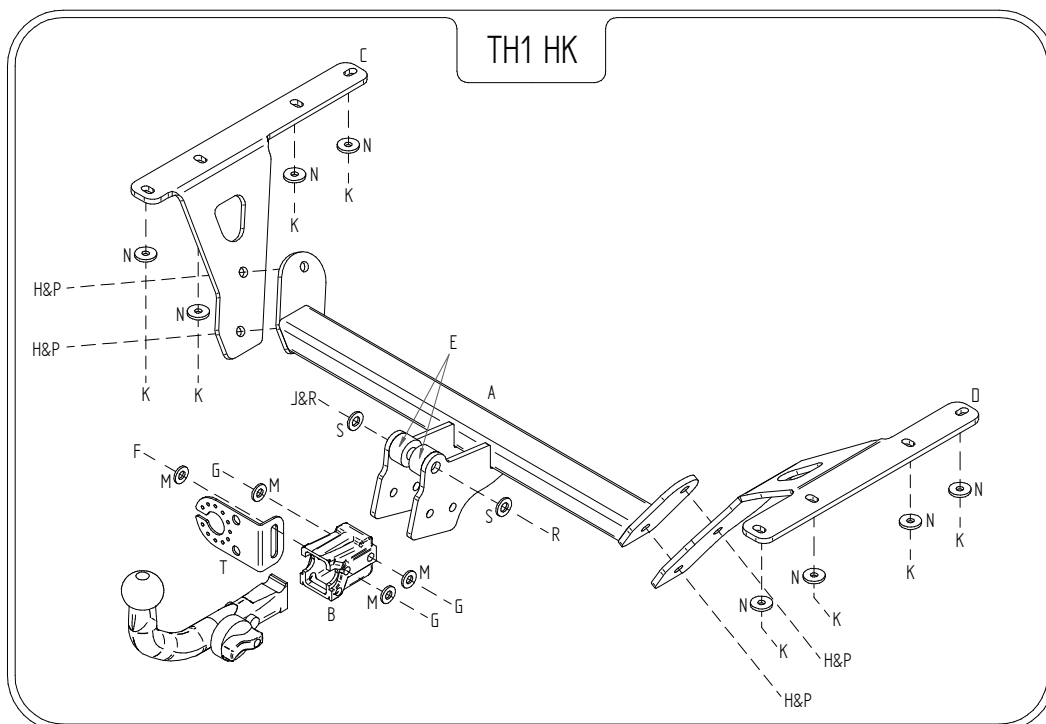


Issue 4

TH1HK Honda CR - V (No Spare Wheel on Rear Door) 2007>

Item	Qty	Description	Item	Qty	Description
A	1	Crossmember	F	1	M12 x 25 Bolt & S/P Washer
B	1	Detachable Housing	G	3	M12 x 22 Bolts & S/P Washers
C	1	L/H Side Arm	H	4	M12 x 35 Bolts, 2 Nuts & 4 S/P Washers
D	1	R/H Side Arm	J	1	M16 x 100 Bolt, Nut & S/P Washer
E	2	40 O/D x 23 Spacers	K	8	M10 x 40 x 1.25 Bolts & S/P Washers
			M	4	12 x 25 Flat Washers
			N	8	10 x 30 Flat Washers
			P	6	M12 Bolt Caps
			R	2	M16 Bolt Caps
			S	2	M16 x 27 Flat Washers
			T	1	Socket Plate

1. Remove plastic under tray. Five fixings along lower edge, one fixing in left hand wheel arch and three fixings recessed centrally. (Under tray is not refitted with the Towbar).
2. Lower the exhaust. (Support to prevent damage.)
3. Using Item K with Item N loosely bolt Item C and Item D to the existing captive nuts in the lower face of each chassis member.
4. Using Item H loosely bolt Item A to Item C and Item D.
5. Locate Item E around the central towing eye and using Item J with Item S bolt into place.
6. Using Item G with Item M and Item F with Item M bolt Item B and Item T to Item A.
7. Fully tighten all nuts and bolts and ensure the Towbar is rigid and secure (**NOTE:** we advise you start with bolt J).
8. Refit exhaust.
9. Replace bumper edge with the two existing plastic fixings.



Note:

1. Recommended Torque Setting for M12 Grade 10.9 -139 Nm. (For other Torque Settings see notes overleaf.)
2. Nose load limits and vehicle manufacturers trailer / caravan weight limits must be observed.