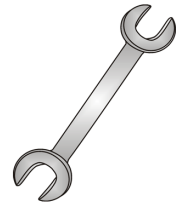




Tow-Trust Towbars

Important: Please read General Notes overleaf before fitting



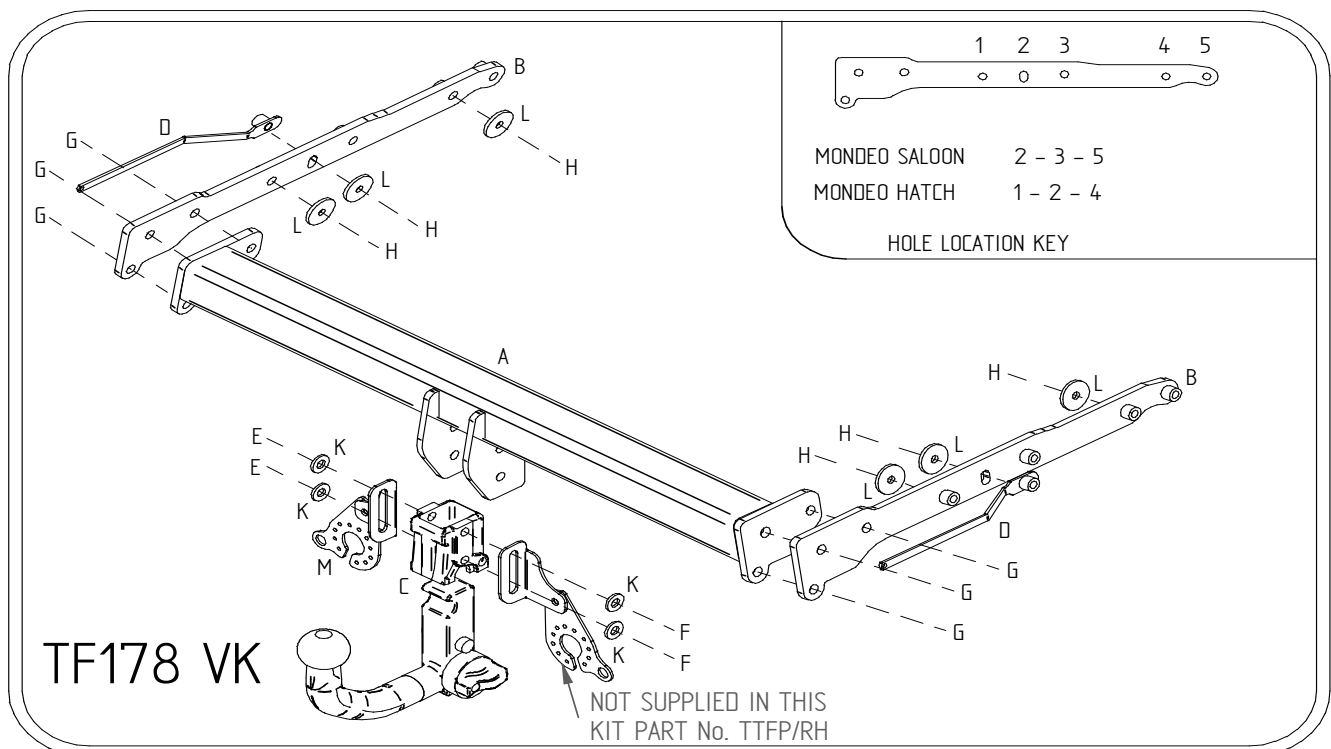
Issue 5

TF178VK Ford Mondeo Hatch / Saloon 2007>

Item	Qty	Description	Item	Qty	Description
A	1	Crossmember	E	2	M12 x 25 Bolts & S/P Washers
B	2	Handed Side Arms	F	2	M12 x 22 Bolts & S/P Washers
C	1	Detachable Housing	G	6	M12 x 40 Bolts, 4 Nuts & 6 S/P Washers
D	2	Nuts on Straps	H	6	M10 x 40 Grade 10.9 Bolts, & S/P Washers
			K	4	12 x 25 Flat Washers
			L	6	10 x 30 Flat Washers
			M	1	Flip Up Socket Plate (TTFP/LH)

1. Remove rear bumper. Two fixings on lower edge, three fixings in wheel arch, two fixings on top edge. Pull bumper tips out from body clips.
2. Remove bumper beam. (This is not refitted with the towbar).
3. Lower rearmost exhaust box.
4. Remove heat shield.
5. Locate Item B into each chassis and using Item H with Item L loosely bolt into place. Locate Item D into each chassis and loosely bolt through remaining mounting point using Item H with Item L. Note: Mounting point holes for Hatch and Saloon are not the same (see sketch).
6. Using Item G bolt Item A to Item B.
7. Using Item F with Item K and Item E with Item K bolt Item C with Item M to Item A.
8. Fully tighten all nuts and bolts and ensure the towbar is rigid and secure.
9. Refit heat shield, exhaust and bumper

NOTE: TITANIUM X (Silver Lower Edge): Bumper cut 87mm WIDE x 97mm DEEP for Towbar central + 170 WIDE x 97 DEEP for socket plate to be cut on the near side of central cut.



Note:

1. Recommended Torque Setting for M10Grade 10.9 -78 Nm M12 Grade 10.9 -139 Nm.
2. Nose load limits and vehicle manufacturers' trailer / caravan weight limits must be observed.