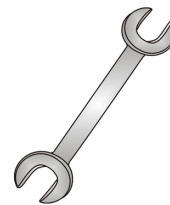




Tow-Trust Towbars

Important: Please read General Notes overleaf before fitting

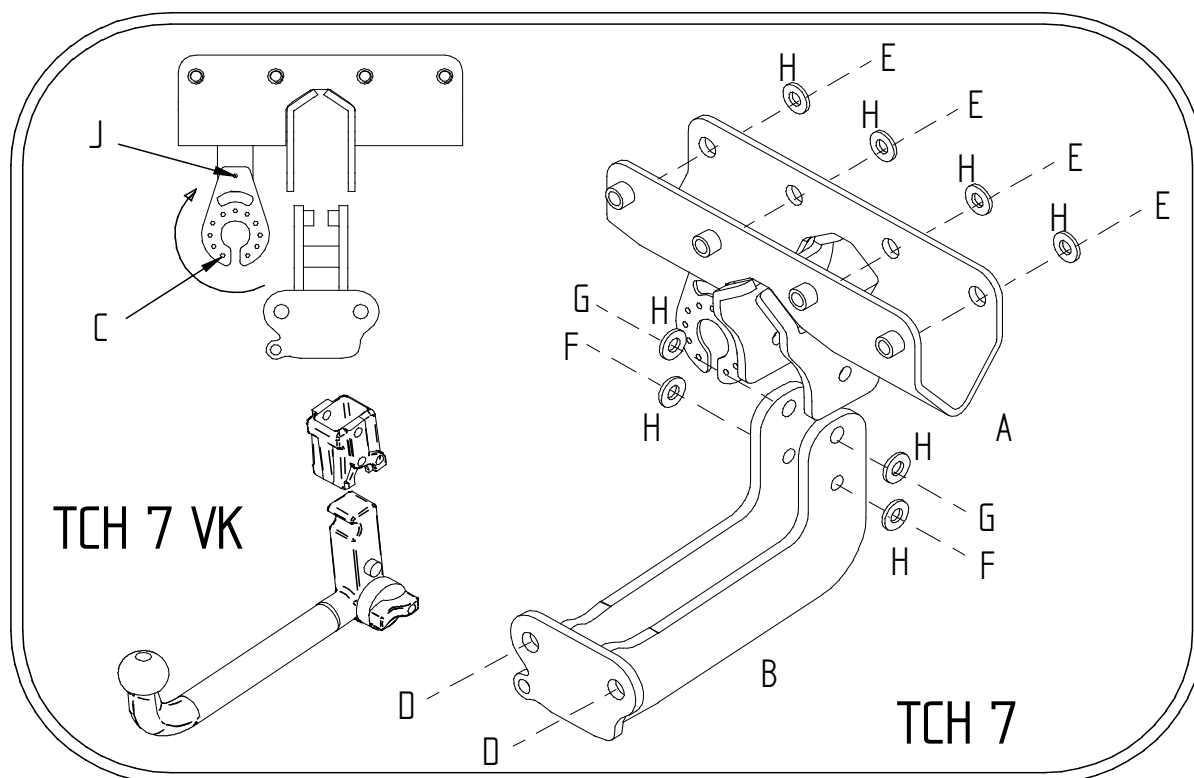


Issue 3

TCH 7 JEEP WRANGLER (JK) 2007>

Item	Qty	Description	Item	Qty	Description
A	1	Channel	D	2	M16 x 50 Bolts Nuts & S/P Washers
B	1	Extension Bar	E	4	M12 x 110 Bolts Grade 10.9 & S/P Washers
C	1	Socket Plate	F	2	M12 x 40 Grade 10.9 Bolts & Nyloc Nuts
			G	2	M12 x 40 Grade 10.9 Bolts & Nyloc Nuts
			H	8	12 x 25 Flat Washers
			J	1	M8 X 25 Bolt & M8 Nyloc Nut

1. Lower the exhaust silencer and support to prevent any damage, locate Towbar mounting points on rear cross member of vehicle.
2. Using item F with item H and item G with item H loosely bolt item B to item A.
3. Using item E with item H bolt the Towbar assembly to the existing holes in the rear Crossmember of the vehicle.
4. Using item D bolt the ball bracket (not supplied in this kit) to item B and fully tighten all nuts and bolts and ensure Towbar is rigid and secure.
5. Refit the exhaust silencer to hanger.



Note:

1. Recommended Torque Setting for M12 Grade 10.9 -139 Nm. (For other Torque Settings see notes overleaf.)
2. Nose load limits and vehicle manufacturers trailer / caravan weight limits must be observed.