



Tow-Trust Towbars

Important: Please read General Notes overleaf before fitting



Issue 1

TBMW8SN BMW 5 SERIES G30 / G31

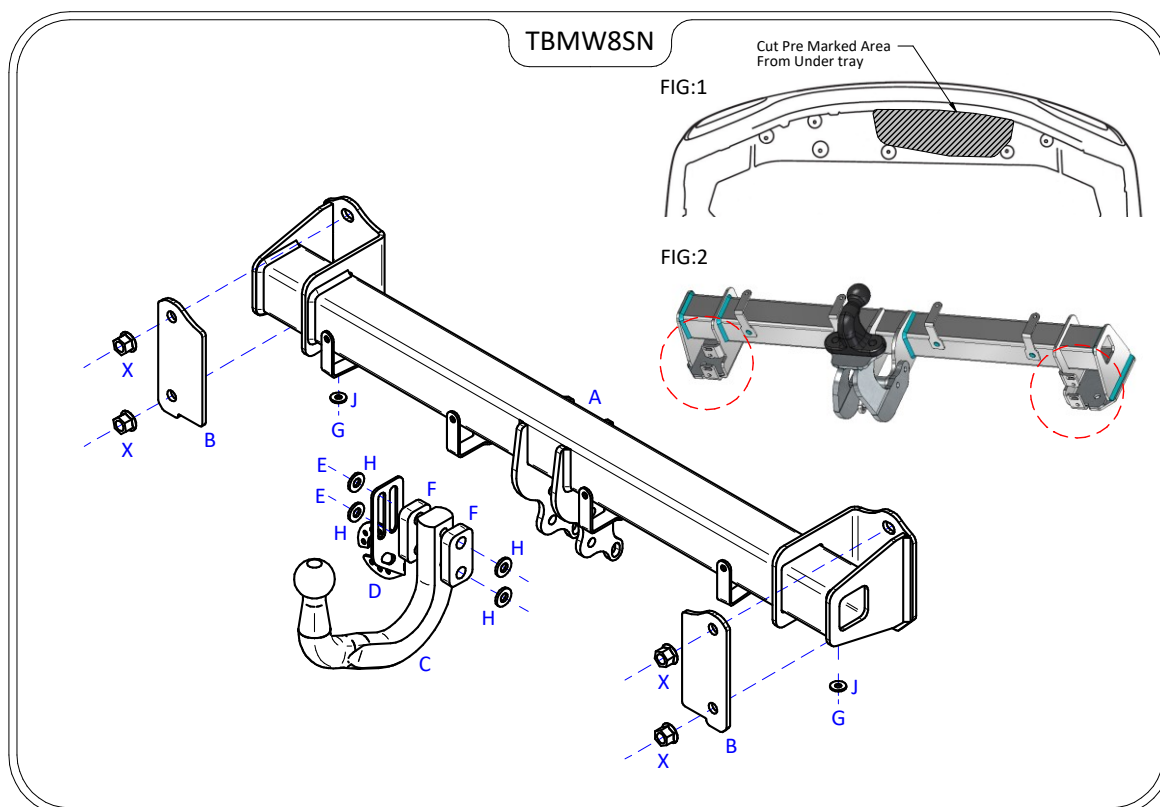
Item	Qty	Description	Item	Qty	Description
A	1	TBMW8 Crossmember	D	1	VASP8 L/H Socket Plate
B	2	Clamp Plates	E	2	M12 x 110 Grade 10.9 Bolts & Nyloc Nuts
C	1	ACS2 / 9202 Swan Neck	F	2	15mm Spacer Plates
			G	2	M8 x 30 Bolts & Nyloc Nut
			H	4	12 x 25 Flat Washers
			J	2	8 x 20 Flat Washers
			X	4	Original Fixings (108 Nm)

BUMPER REMOVAL:

1. Open the rear boot and remove boot interior trim. Remove the inner light cluster trim on the outside of the boot shut area to reveal two light cluster fixings, remove the two fixings along with one inside the boot to remove each light cluster. This will reveal one bumper fixing either side to remove.
2. Remove nine fixings along the bumper lower edge and four from each wheel arch. Carefully remove the bumper from the vehicle body starting at the tips carefully releasing each clip then pull rearward.
3. Remove the plastic trim fitted to the rear impact beam, this will be refitted to Item A using its original fixings.
4. Remove the exhaust rubber from the rear impact beam, support the exhaust to prevent damage.
5. Remove the rear impact but retain fixings. (This is not refitted with the Towbar assembly).
6. Cut the under tray to the pre marked area (SEE FIG:1)

TOWBAR INSTALLATION:

1. Using the original fixings fit Item A to the rear panel ensuring Items B are used as clamp plates.
2. Using Item G with Item J rehang the exhaust to Item A (SEE FIG:2 for location)
3. Using Item E with Item H and Item F fit Item C and Item D to Item A.
4. Fully tighten all fixings ensuring the Towbar is rigid, square and secure.
5. Using the original fixings fit the inner plastic bumper support to Item A.
6. Refit the rear bumper and light clusters.



Note:

1. Torque Settings see notes overleaf.
2. Nose load limits and vehicle manufacturers trailer / caravan weight limits must be observed.