



Tow-Trust Towbars

Important: Please read General Notes overleaf before fitting



Issue 1

TBMW8 BMW 5 SERIES G30 / G31

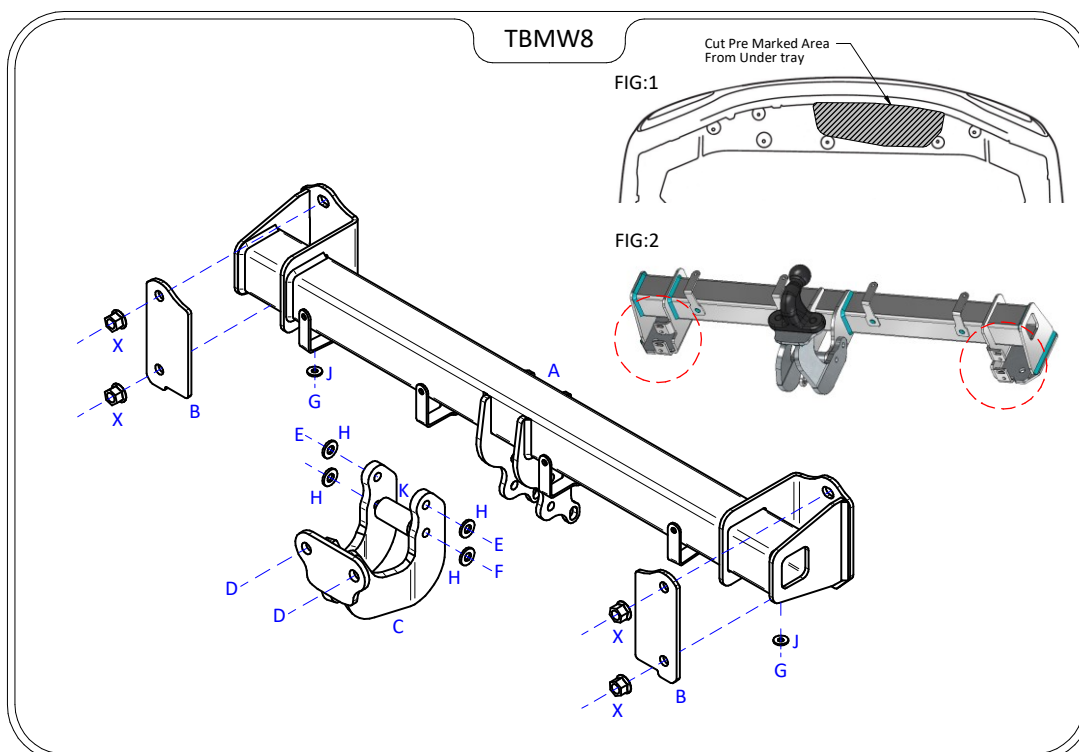
Item	Qty	Description	Item	Qty	Description
A	1	TBMW8 Crossmember	D	2	M16 x 50 Bolts & Nyloc Nuts
B	2	Clamp Plates	E	2	M12 x 45 Bolts & Nyloc Nuts
C	1	Extension	F	1	M12 x 130 Bolt & Nyloc Nut
			G	2	M8 x 30 Bolts & Nyloc Nut
			H	4	12 x 25 Flat Washers
			J	2	8 x 20 Flat Washers
			K	1	30mm O/D x 60mm Long Spacer Tube
			X	4	Original Fixings (108 Nm)

BUMPER REMOVAL:

1. Open the rear boot and remove boot interior trim. Remove the inner light cluster trim on the outside of the boot shut area to reveal two light cluster fixings, remove the two fixings along with one inside the boot to remove each light cluster. This will reveal one bumper fixing either side to remove.
2. Remove nine fixings along the bumper lower edge and four from each wheel arch. Carefully remove the bumper from the vehicle body starting at the tips carefully releasing each clip then pull rearward.
3. Remove the plastic trim fitted to the rear impact beam, this will be refitted to Item A using its original fixings.
4. Remove the exhaust rubber from the rear impact beam, support the exhaust to prevent damage.
5. Remove the rear impact but retain fixings. (This is not refitted with the Towbar assembly).
6. Cut the under tray to the pre marked area (SEE FIG:1)

TOWBAR INSTALLATION:

1. Using the original fixings fit Item A to the rear panel ensuring Items B are used as clamp plates.
2. Using Item G with Item J rehang the exhaust to Item A (SEE FIG:2 for location)
3. Using the original fixings fit the inner plastic bumper support to Item A.
4. Fully tighten all fixings ensuring the Towbar is rigid, square and secure.
5. Refit the rear bumper and light clusters.
6. Using Item E with Item H and Item F with Item H fit Item C to Item A ensuring Item K is fitted between the lower point.
7. Using Item D fit your desired ball bracket and wiring plate (Not supplied in this kit) to Item C.
8. Fully tighten all remaining fixings.



Note:

1. Torque Settings see notes overleaf.
2. Nose load limits and vehicle manufacturers trailer / caravan weight limits must be observed.