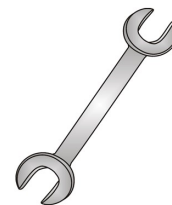




Tow-Trust Towbars

Important: Please read General Notes overleaf before fitting



Issue 1

TBMW7VK-6214 BMW 3 Series GT (F34)

Item	Qty	Description	Item	Qty	Description
A	1	TBMW7 Crossmember	E	1	Flip Up Socket Plate (TTFP/LH)
B	2	Handed Side Arms	F	4	M12 x 40 Bolts, 2 Nyloc Nuts & 2 S/P Washers
C	1	6214 Detachable Neck	G	2	M8 x 25 Bolts & Nyloc Nuts
			H	2	M12 x 25 Bolts & S/P Washers
			J	2	M12 x 22 Bolts & S/P Washers
			K	4	8 x 25 Flat Washers
			L	8	12 x 25 Flat Washers
			X	4	Original BMW Fixings (115 Nm)
			Y	4	12 x 30 Flat Washers

BUMPER REMOVAL:

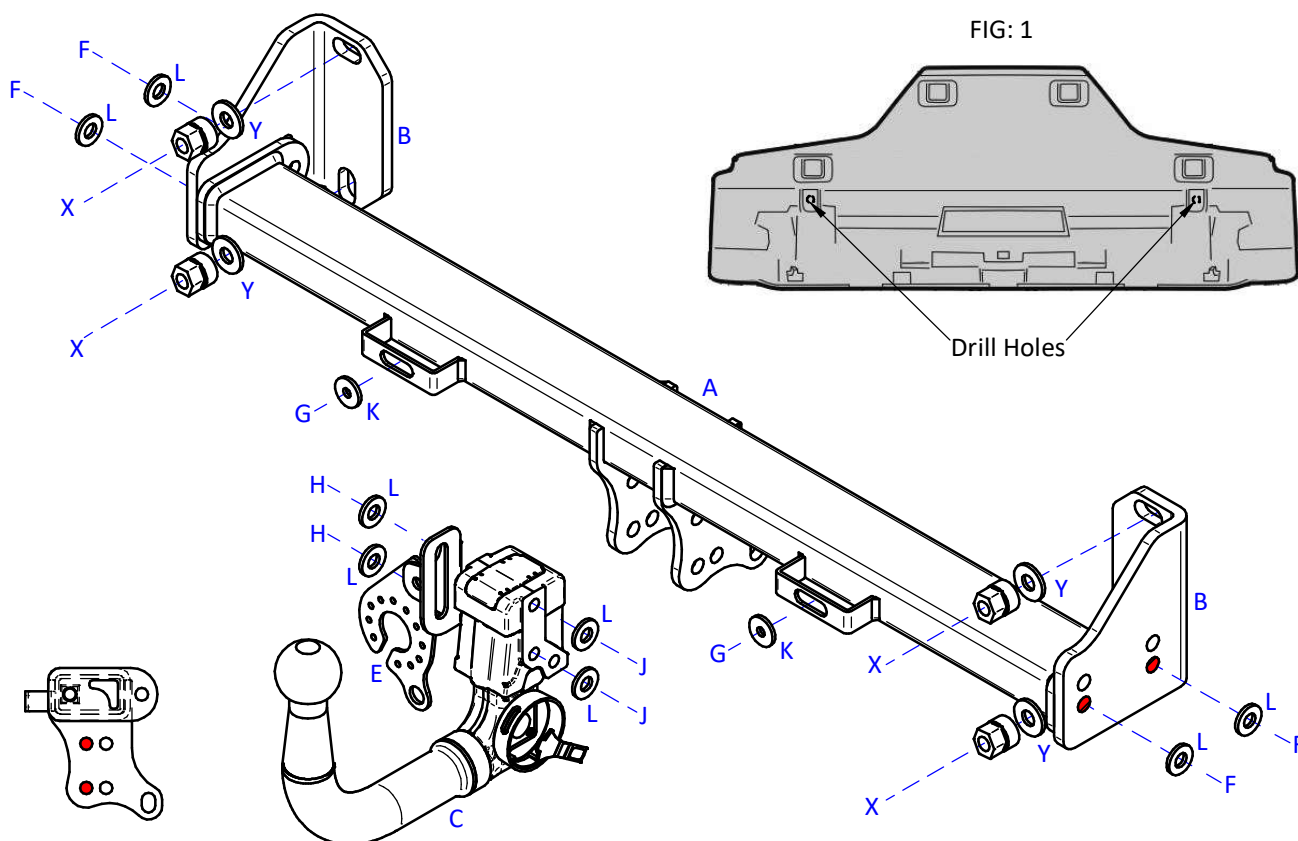
1. Remove the rear light clusters, remove fixings from each wheel arch and along the lower edge of the bumper.
2. Remove the rear impact beam, this is Not refitted with the Towbar assembly. Retain the gaskets for fitting Item A to the rear panel.

TOWBAR INSTALLATION:

1. Fix Items B onto the rear panel using the Item X with Item Y and the original gaskets. (We advise additional sealant is applied).
2. Using Item F with Item L fix Item A between each side arm.
3. Using Item J with Item L and Item H with Item L fix Item C and Item E to Item A.
4. Fully tighten all fixings ensuring the Towbar is rigid, square and secure.
5. Drill the inner bumper support and refit to Item A using Item G and Item K. (See Fig 1)
6. Cut the rear bumper 60mm wide x 20mm deep.
7. Refit the rear bumper and light clusters.

TBMW7VK-6214

FIG: 1



Note:

1. Recommended Torque Setting for M12 Grade 10.9 -130 Nm. (For other Torque Settings see notes overleaf.)
2. Nose load limits and vehicle manufacturers trailer / caravan weight limits must be observed.