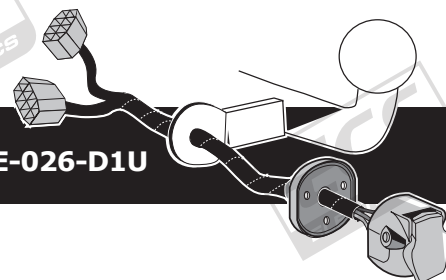


**VOLKSWAGEN Polo 2009- 3drs /**  
**VOLKSWAGEN Polo 2009- 5drs /**  
**VOLKSWAGEN Polo 2009- Cross**

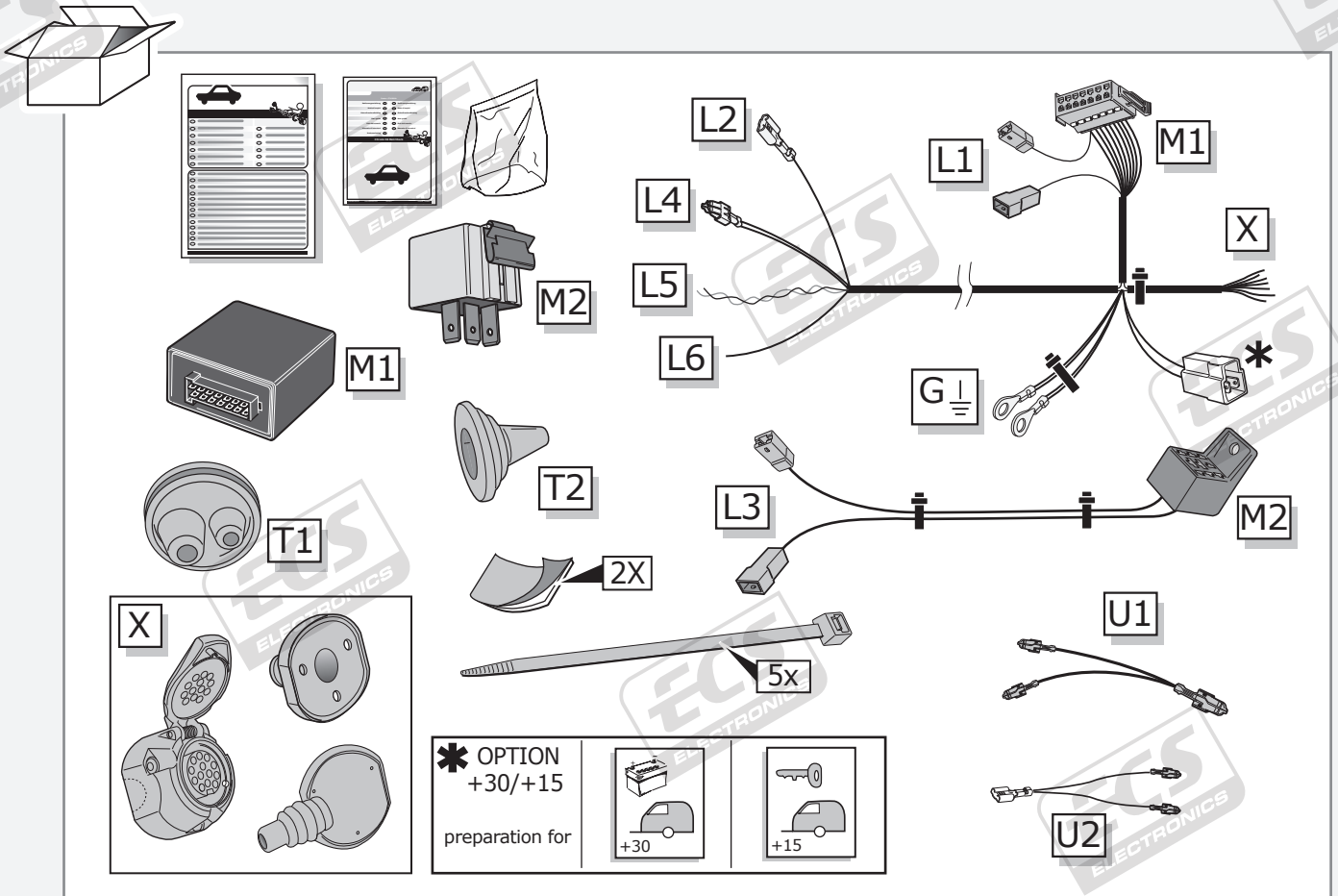
**Partnr.: SE-026-D1U**



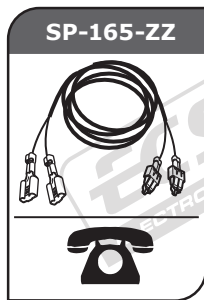
- Fitting instructions electric wiring kit tow bar with 13-P socket up to DIN/ISO Norm 11446.
- We would expressly point out that assembly not carried out properly by a competent installer will result in cancellation of any right to damage compensation, in particular those arising by virtue of the product liability act.
- Contents of these kits and their fitting manuals are subject to alteration without notice, please ensure that these instructions are read and fully understood before commencing installation.
- Do not overload circuits; the maximum loads per connection are detailed in this manual.
- Attention! Before Installation, please read this manual carefully and inform your customer to consult the vehicle owners manual to check for any vehicle modifications required before towing.
- In the event of functional problems, troubleshooting must be limited to about 0.5 hours, contact the technical support:  
[t.skinner@ecs-electronics.com](mailto:t.skinner@ecs-electronics.com) / 07440 202 052.



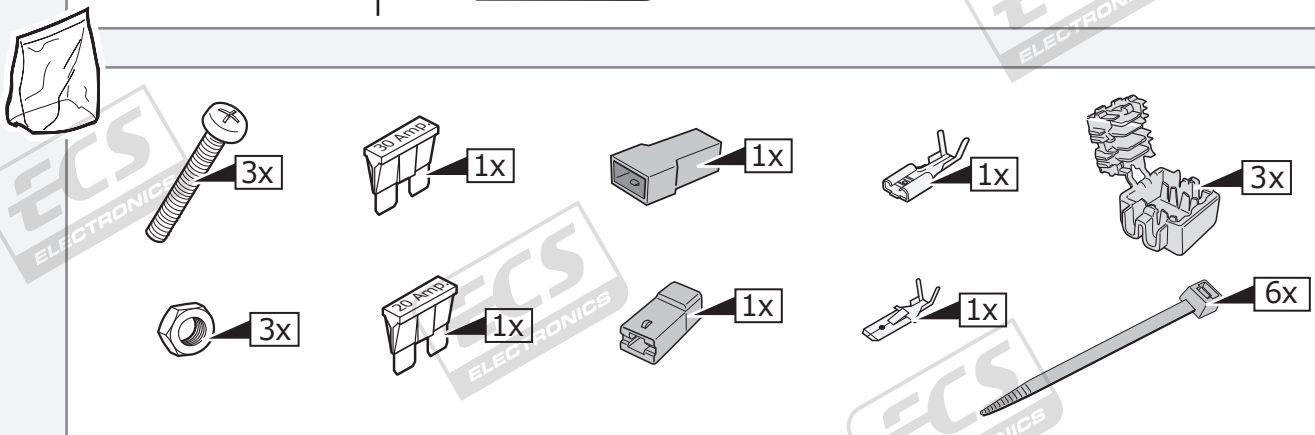
# Part list



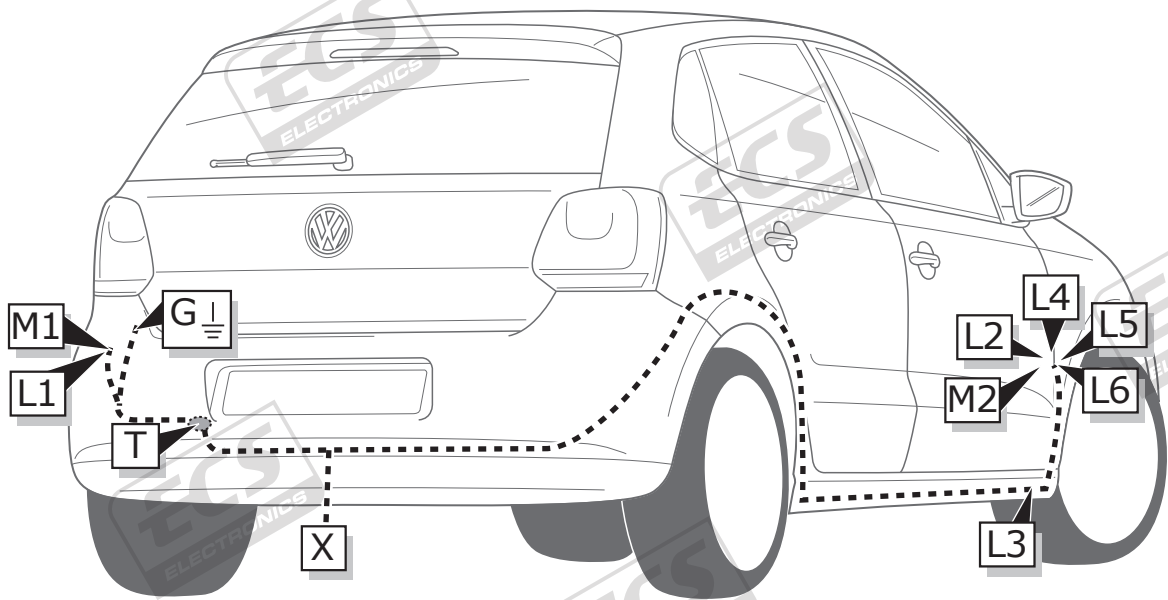
Option \*  
+30/+15  
extension kit



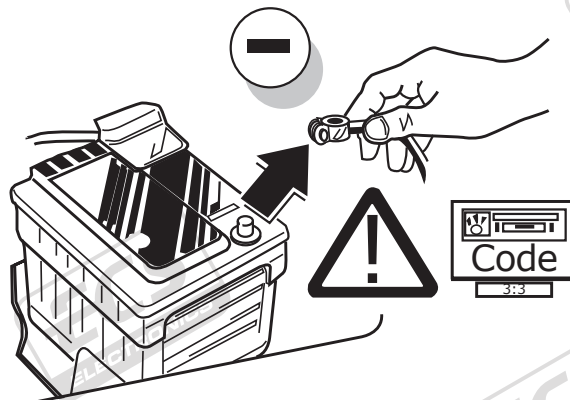
Consult your supplier.



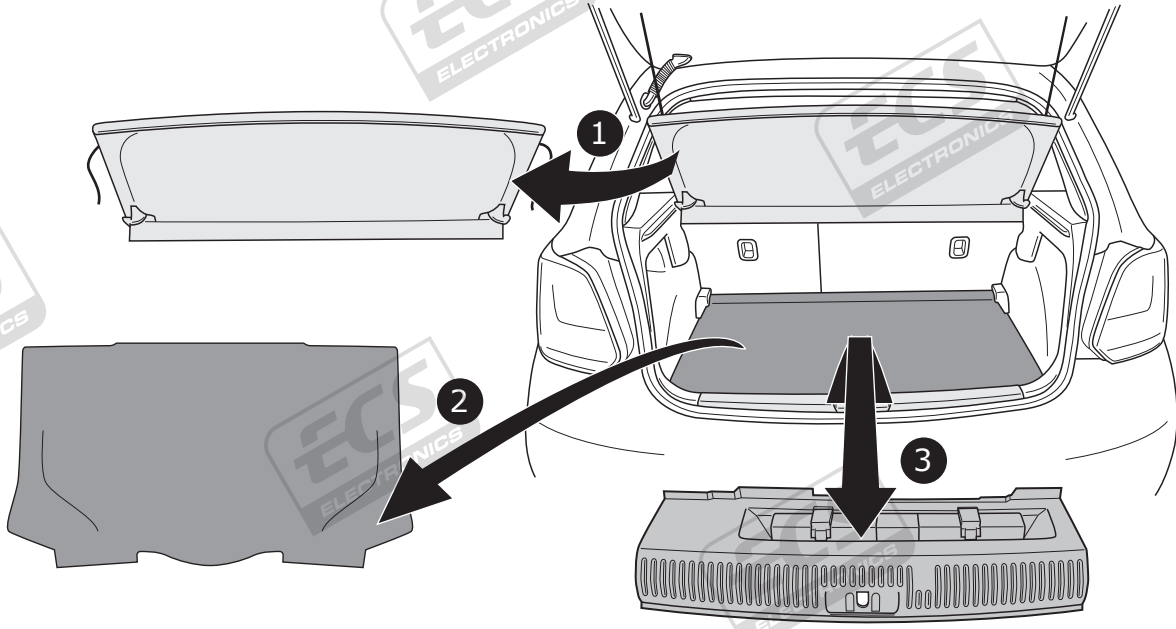
**ROUTING**



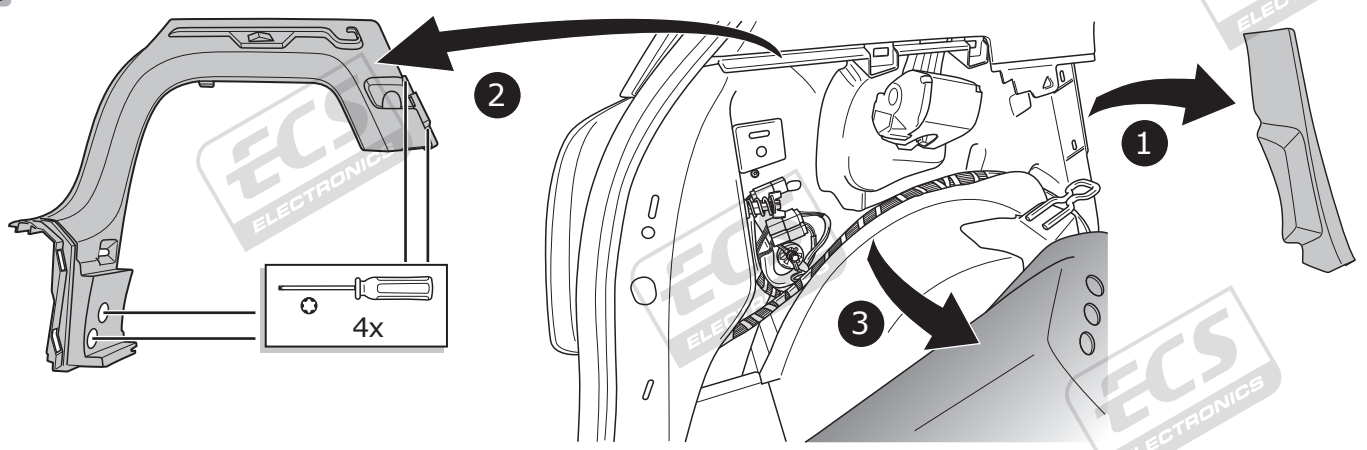
**1**



2

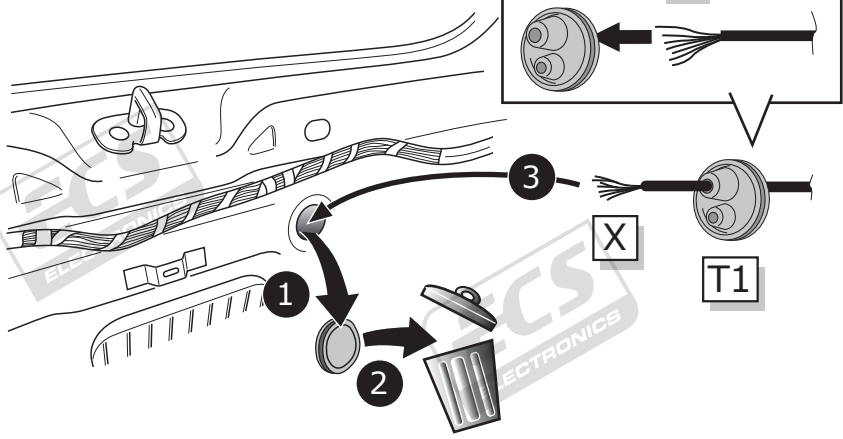
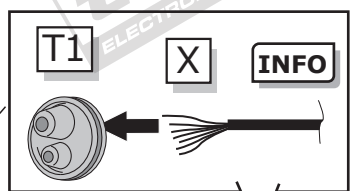
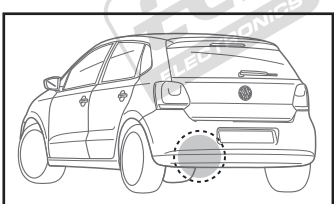


3

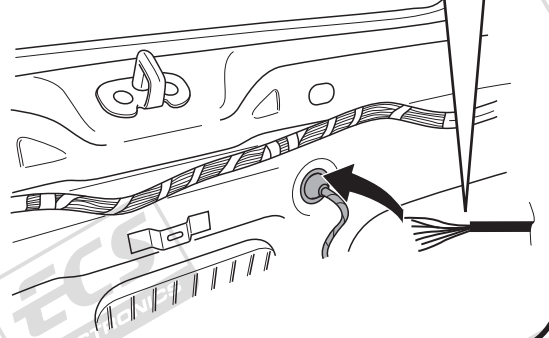
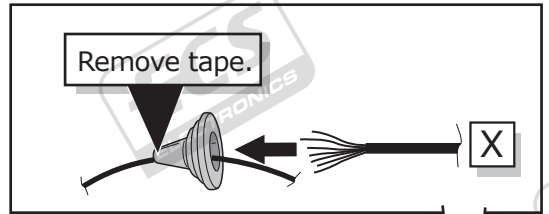


4

**OPTION 1**

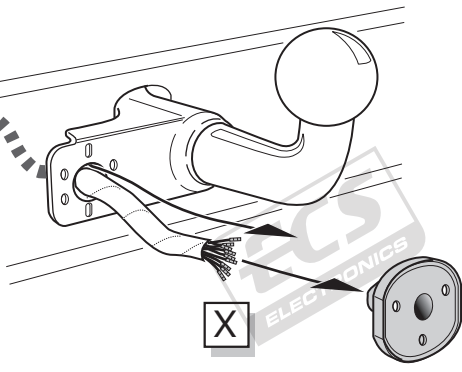


**OPTION 2**

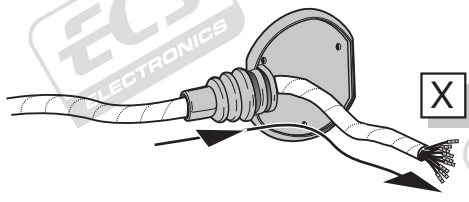


A

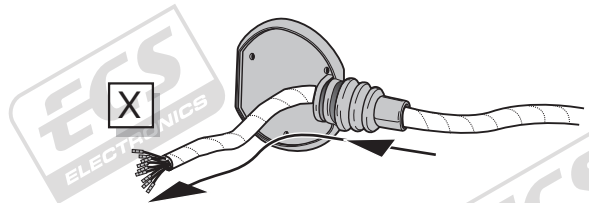
Option 1



Option 2



Option 3



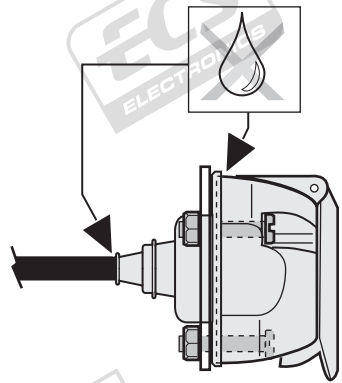
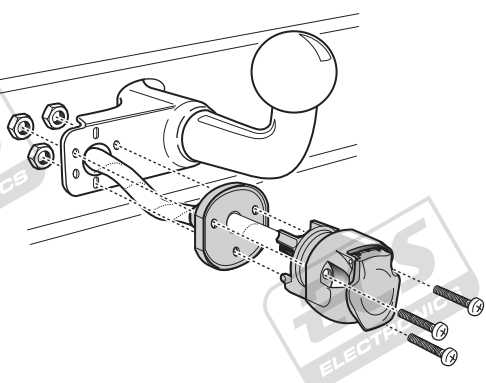
INFO

# SOCKET CONNECTION

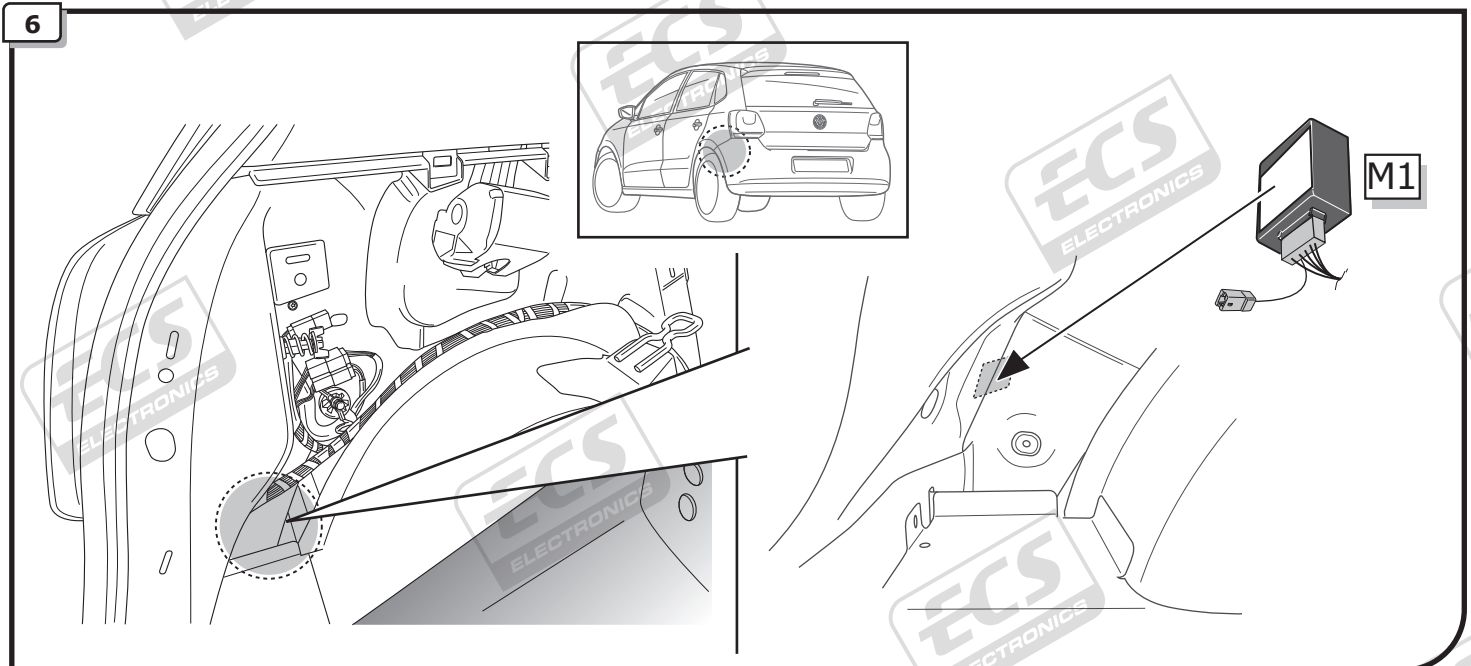
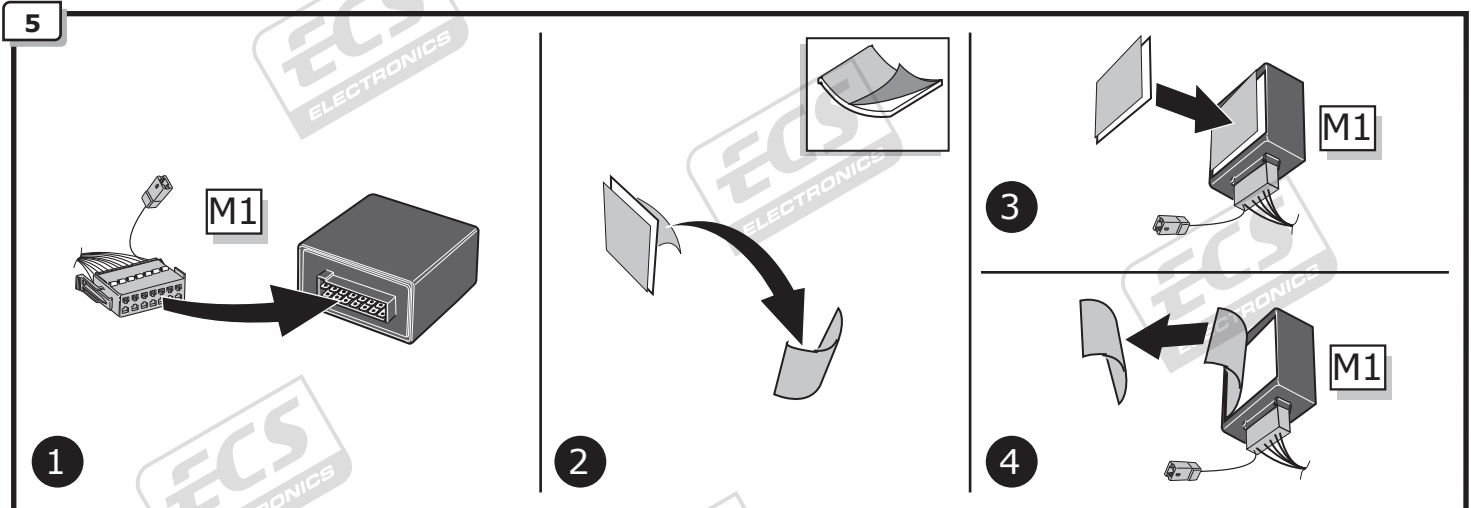
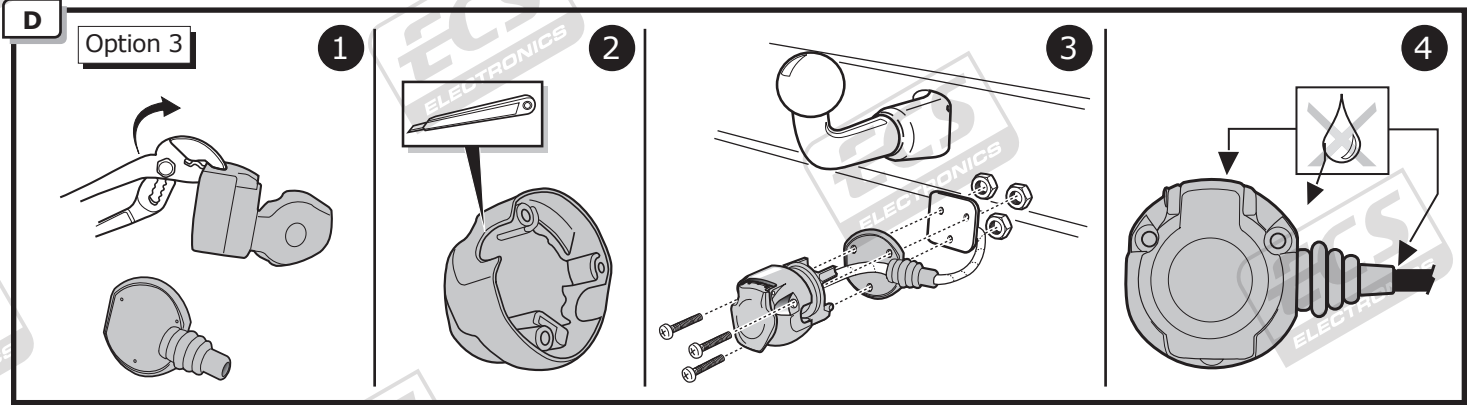
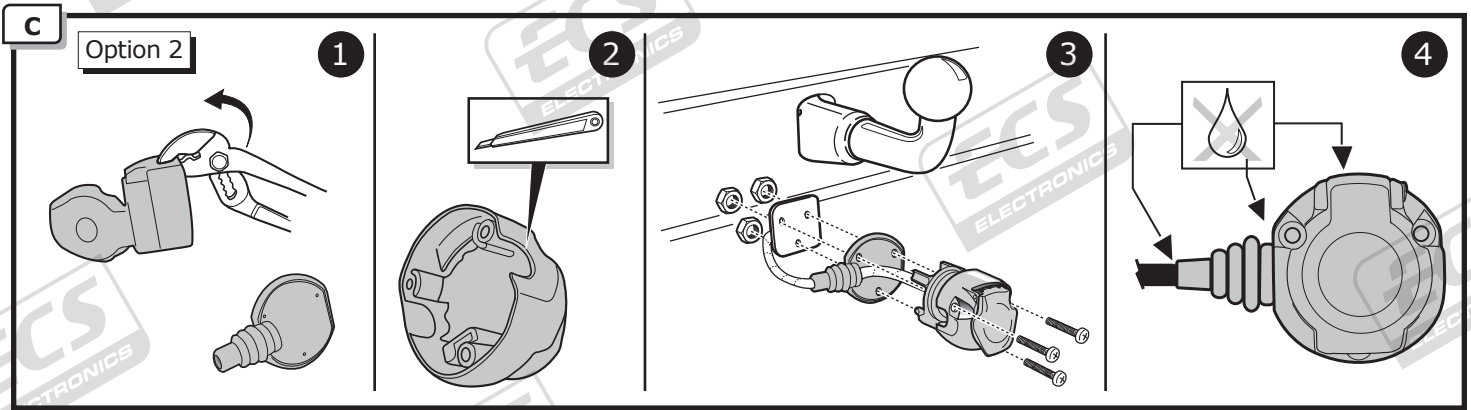
Pag. 15

B

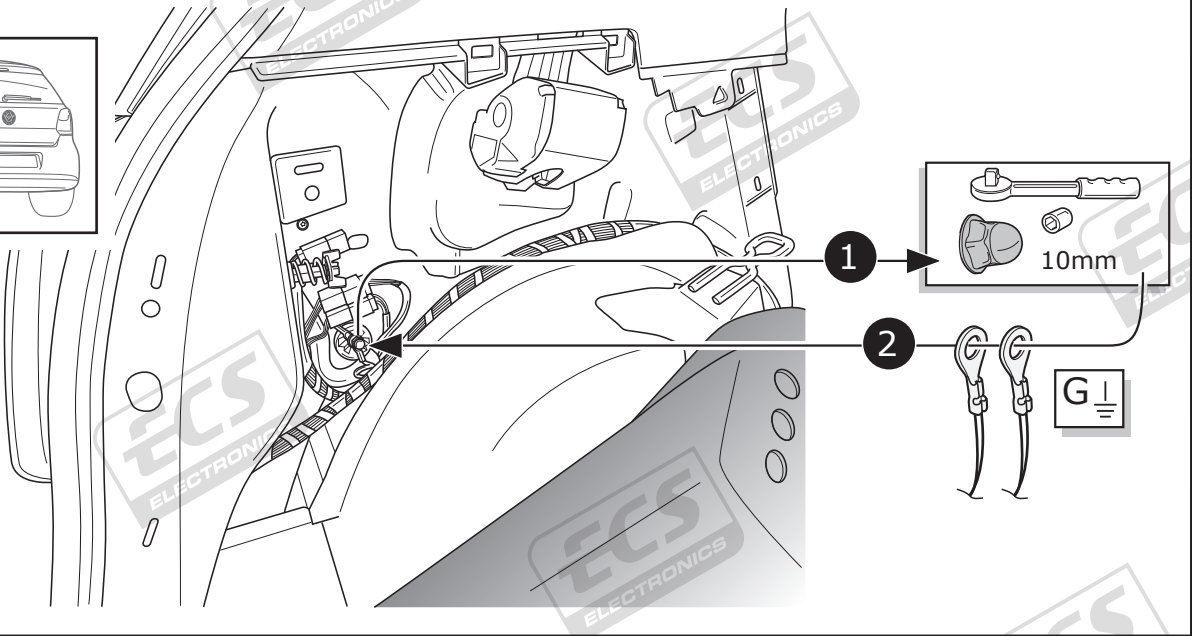
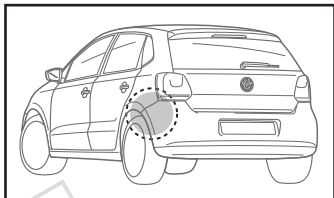
Option 1



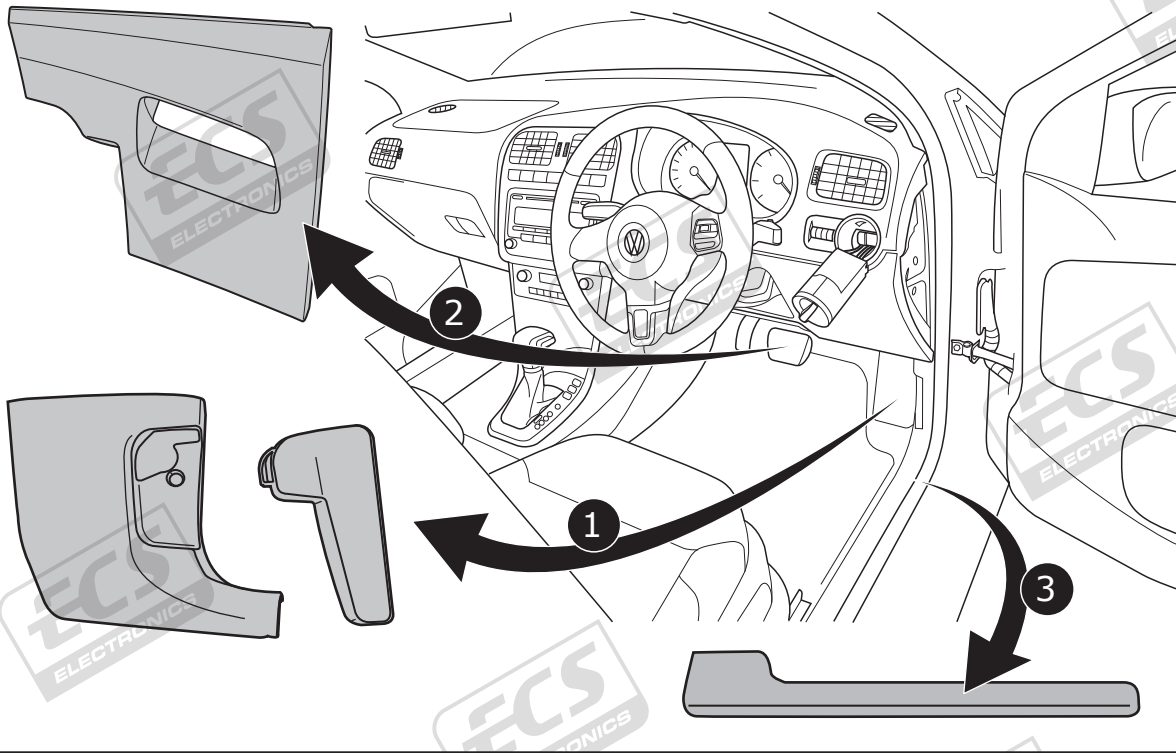




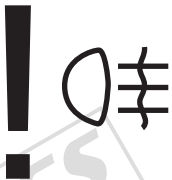
7



8



9



**OPTION A** for vehicles with Start & Stop/Automatic Lighting:  
fog lamp connection by CAN-Bus



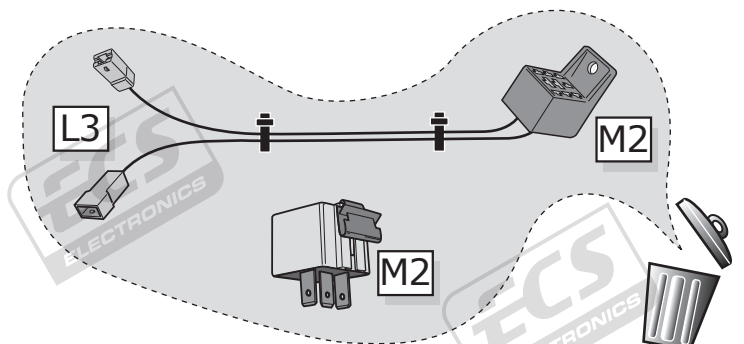
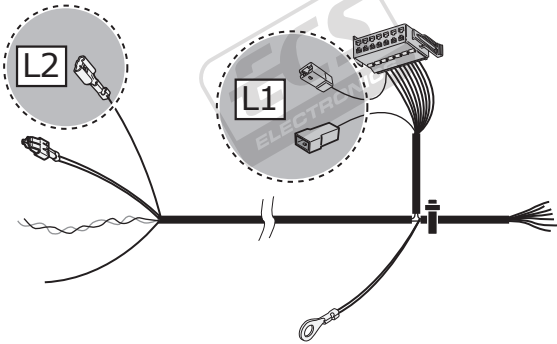
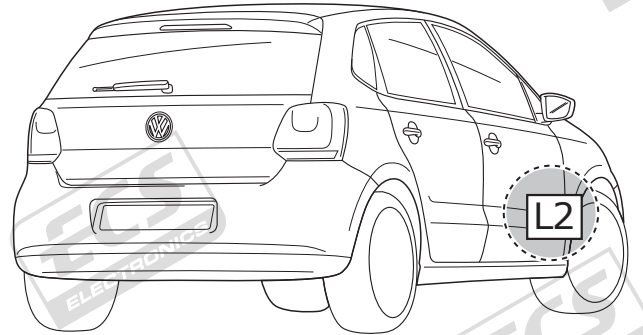
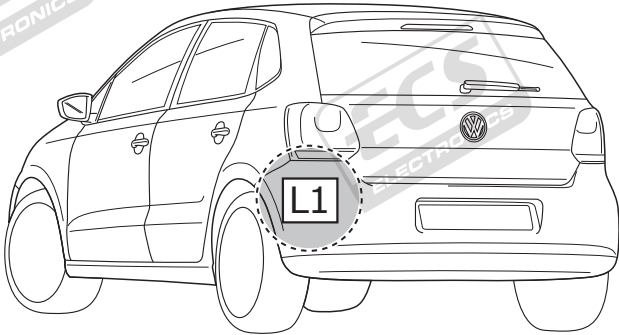
**OPTION B** for standard vehicles:  
fog lamp connection by relay



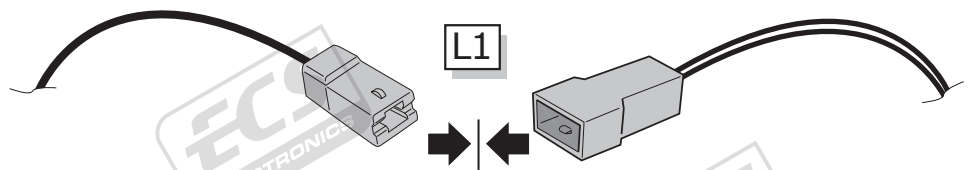
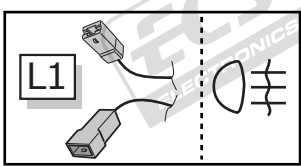
**OPTION A** for vehicles with Start & Stop/Automatic Lighting: fog lamp connection by CAN-Bus

INFO

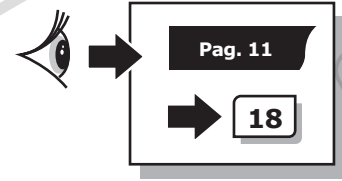
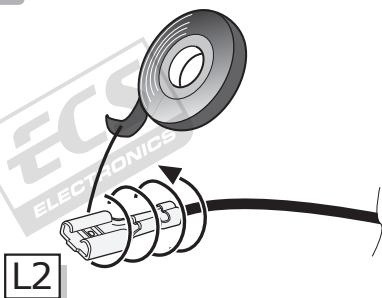
**OPTION A**



10



11

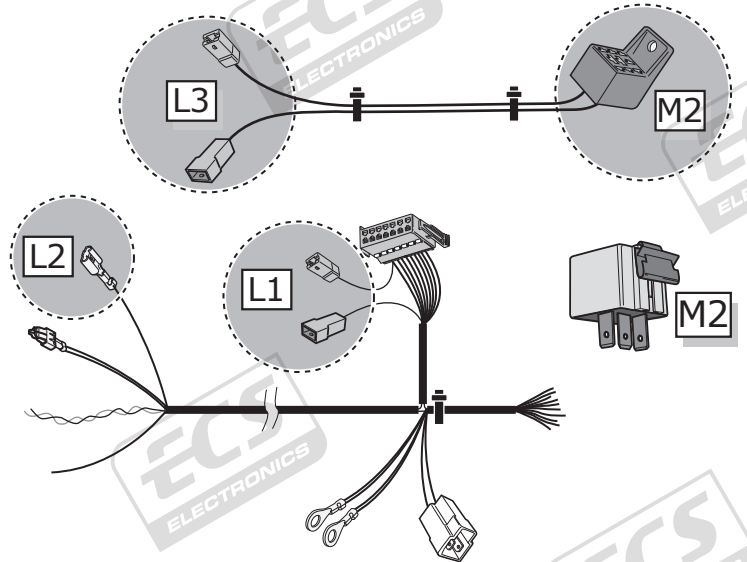
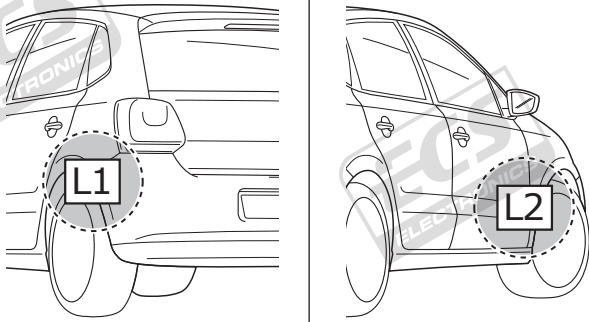




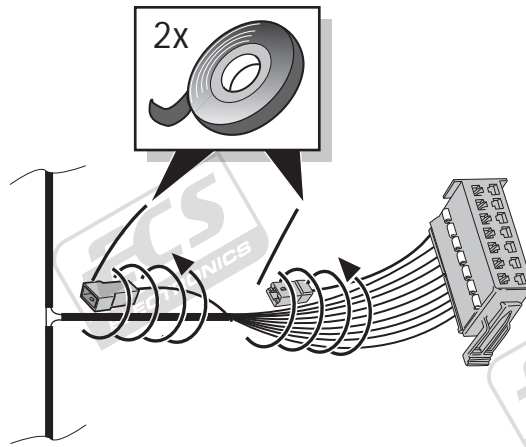
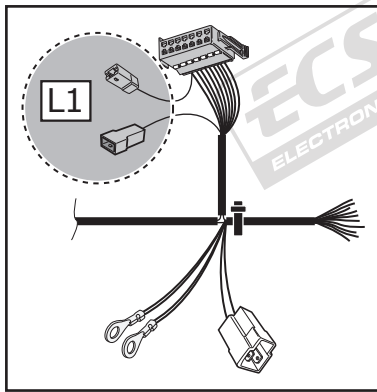
**OPTION B** for standard vehicles: fog lamp connection by relay

INFO

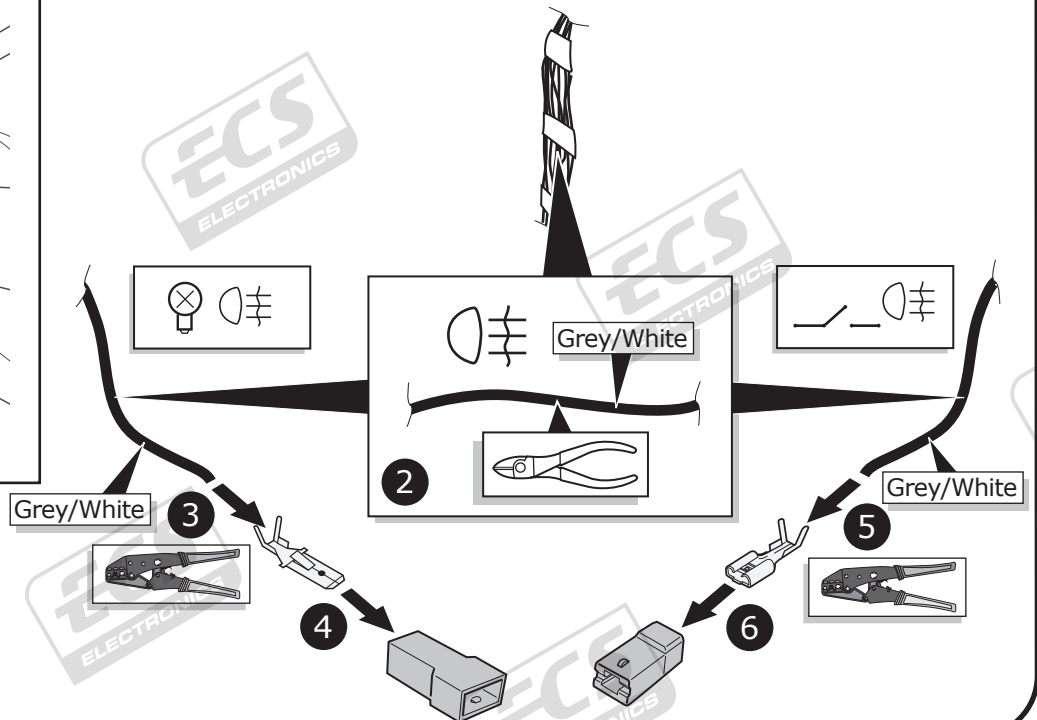
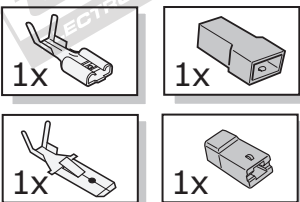
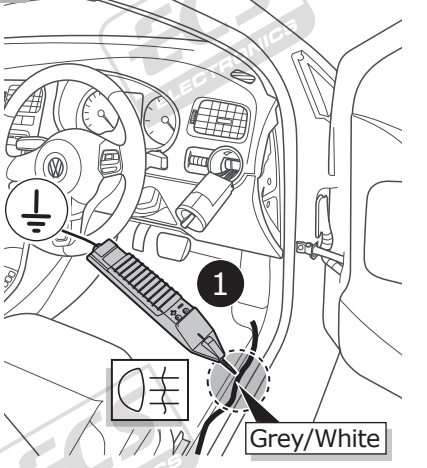
**OPTION B**



12

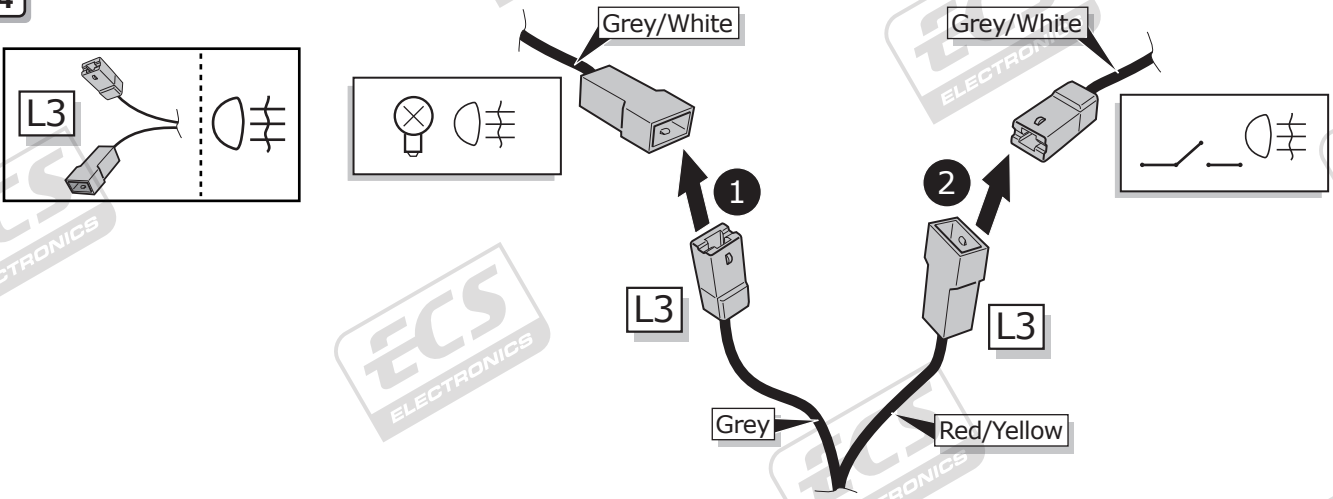


13

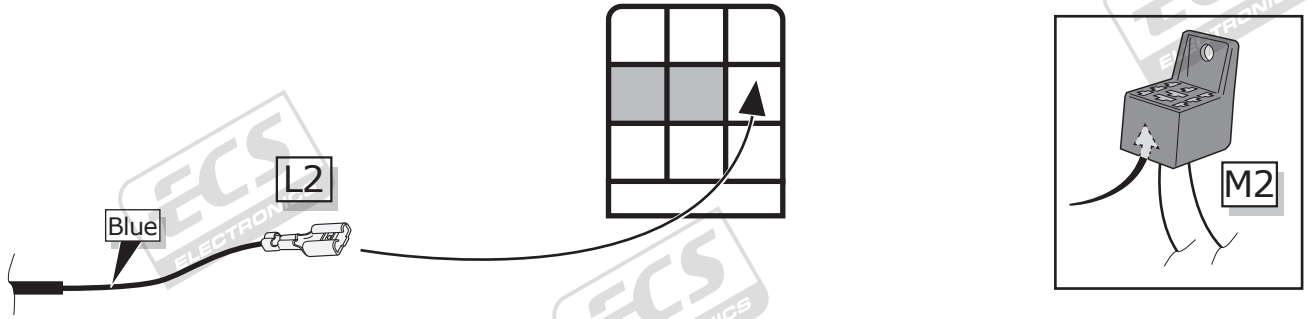


**OPTION B** for standard vehicles: fog lamp connection by relay

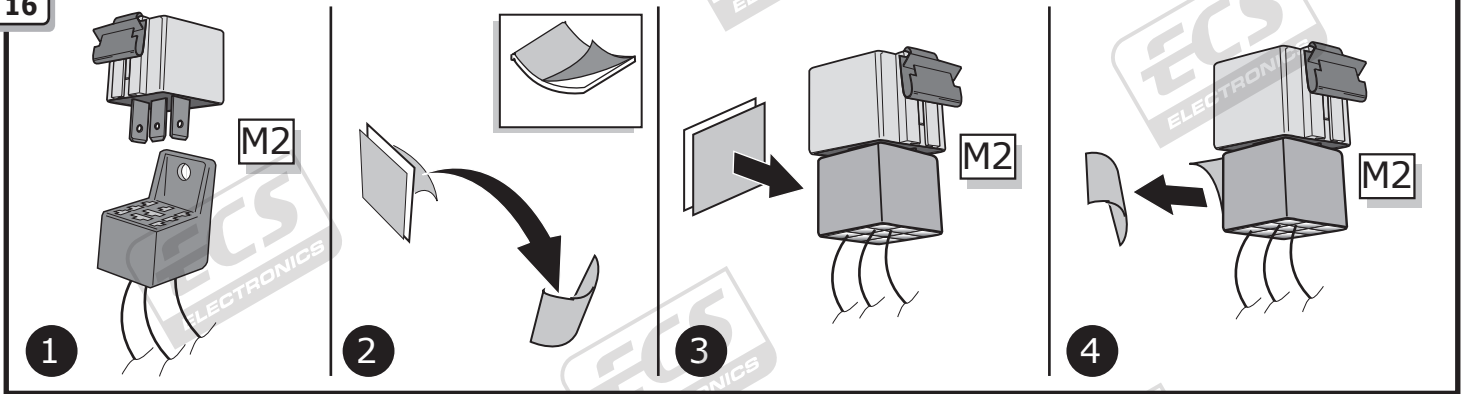
14



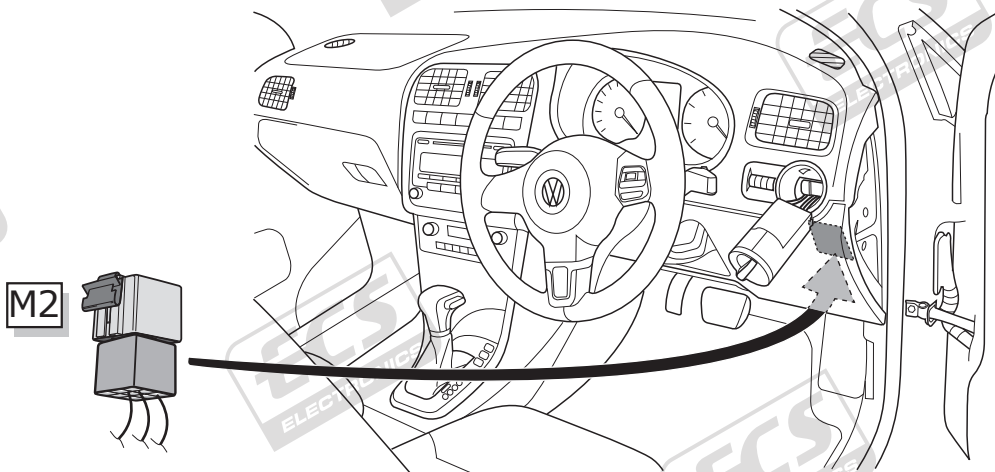
15



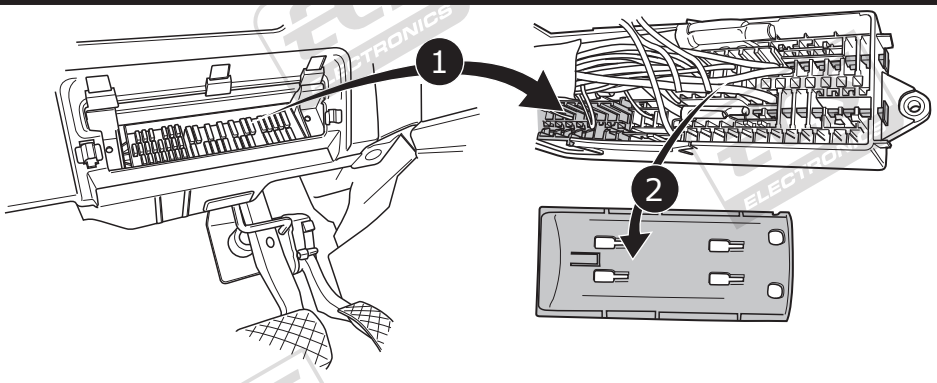
16



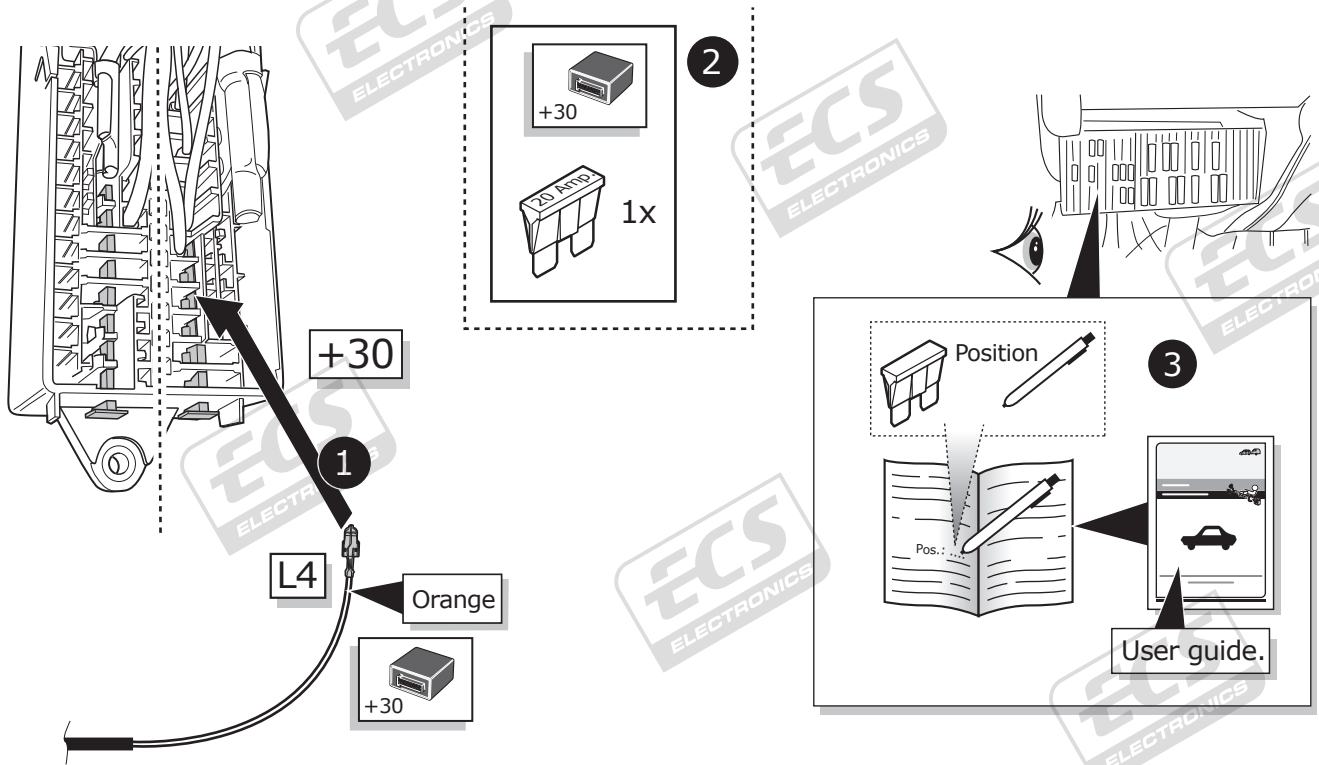
17



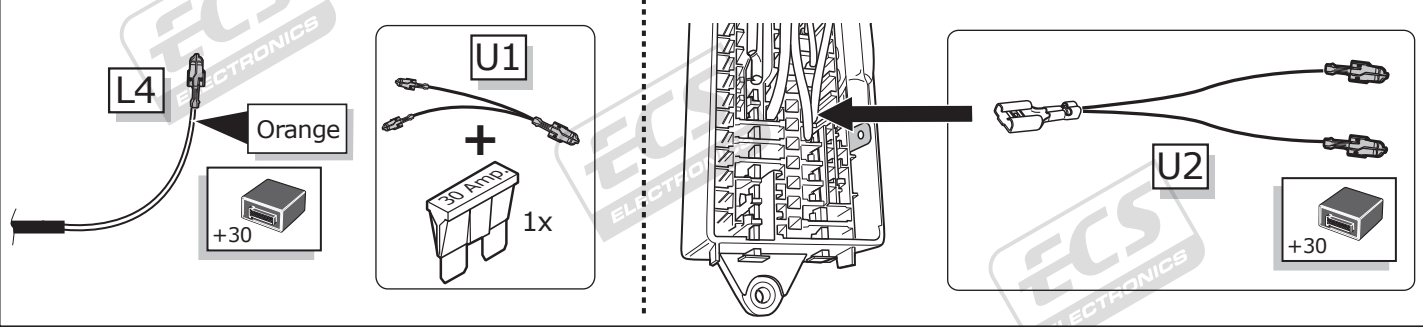
18



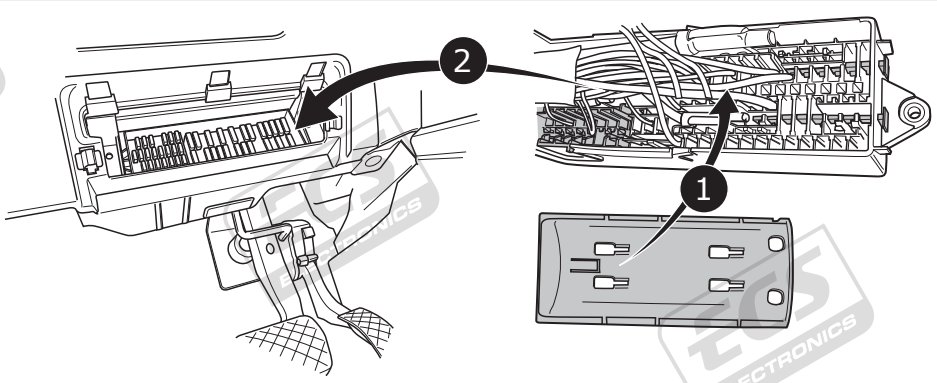
19



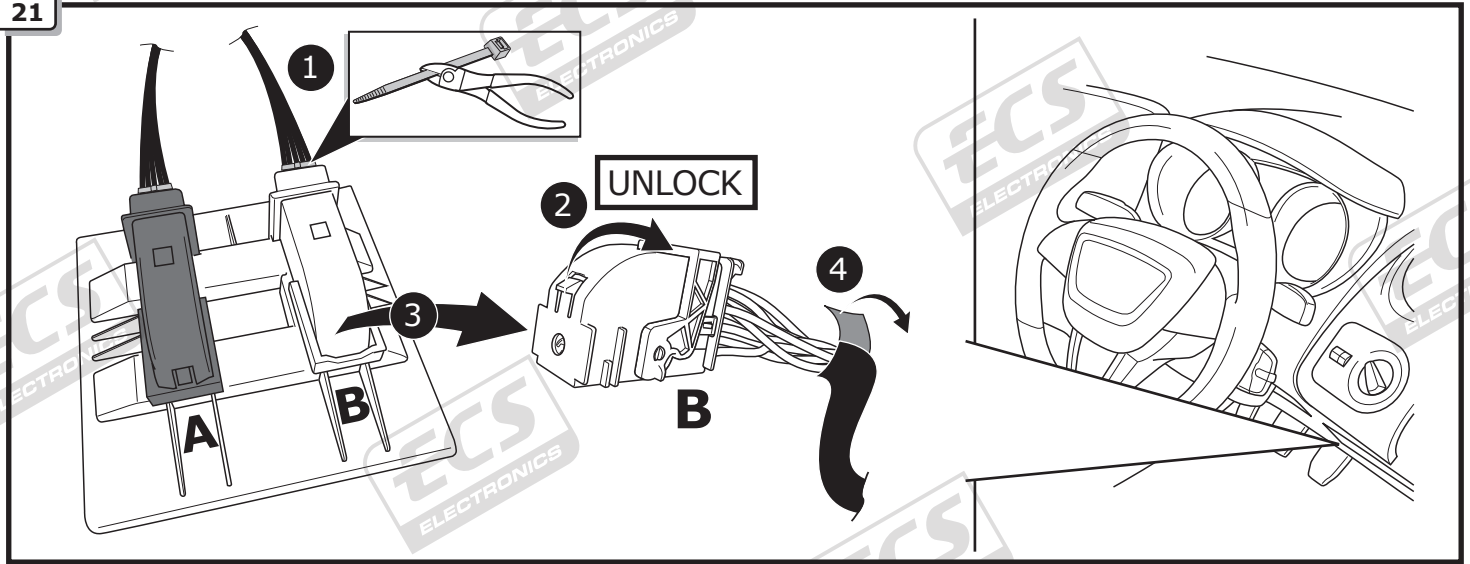
If Positions are taken:



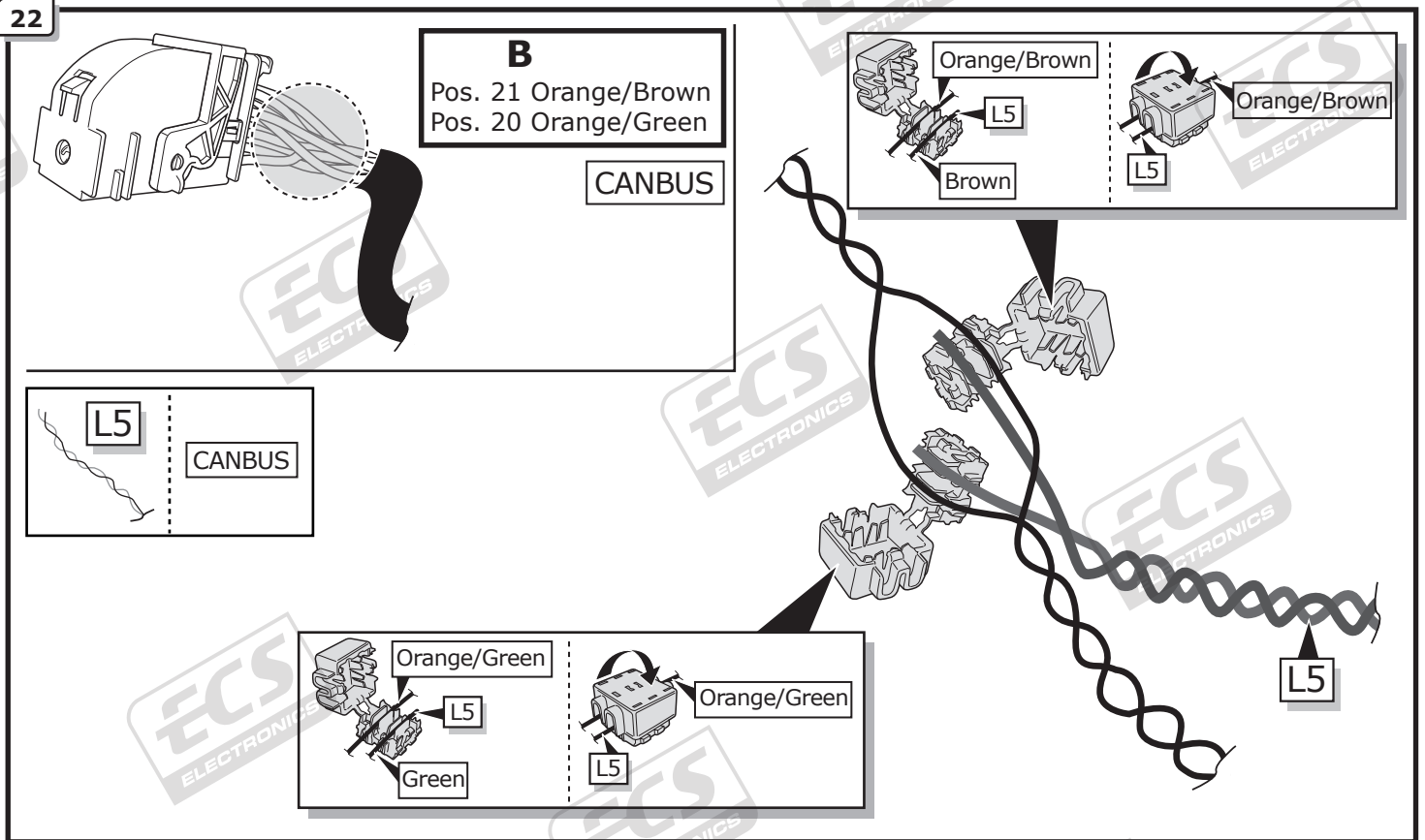
20



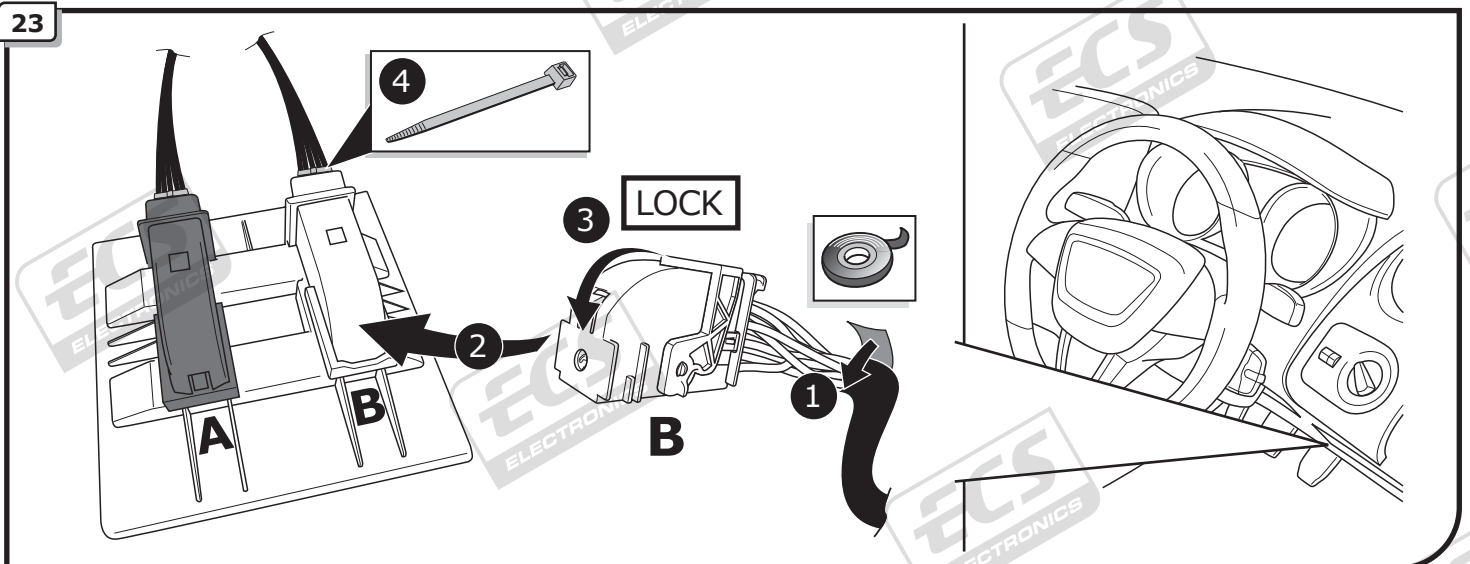
21



22

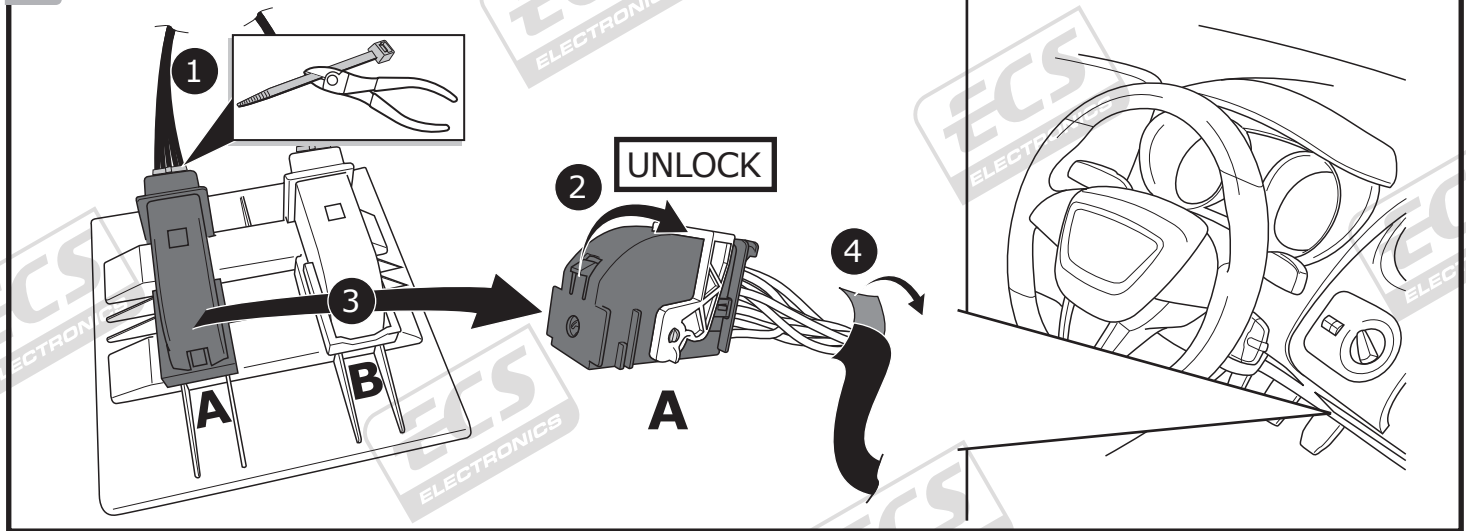


23

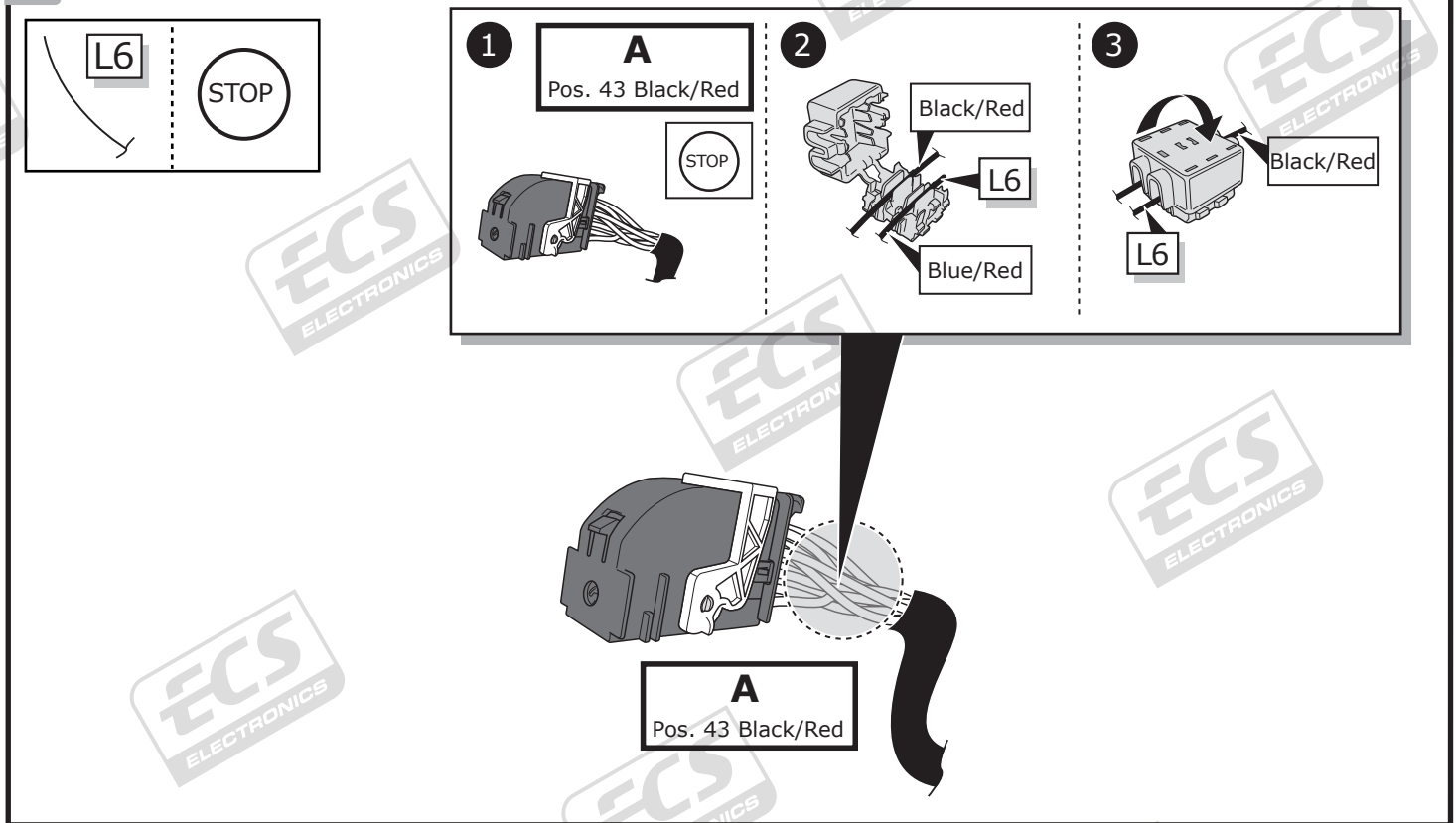




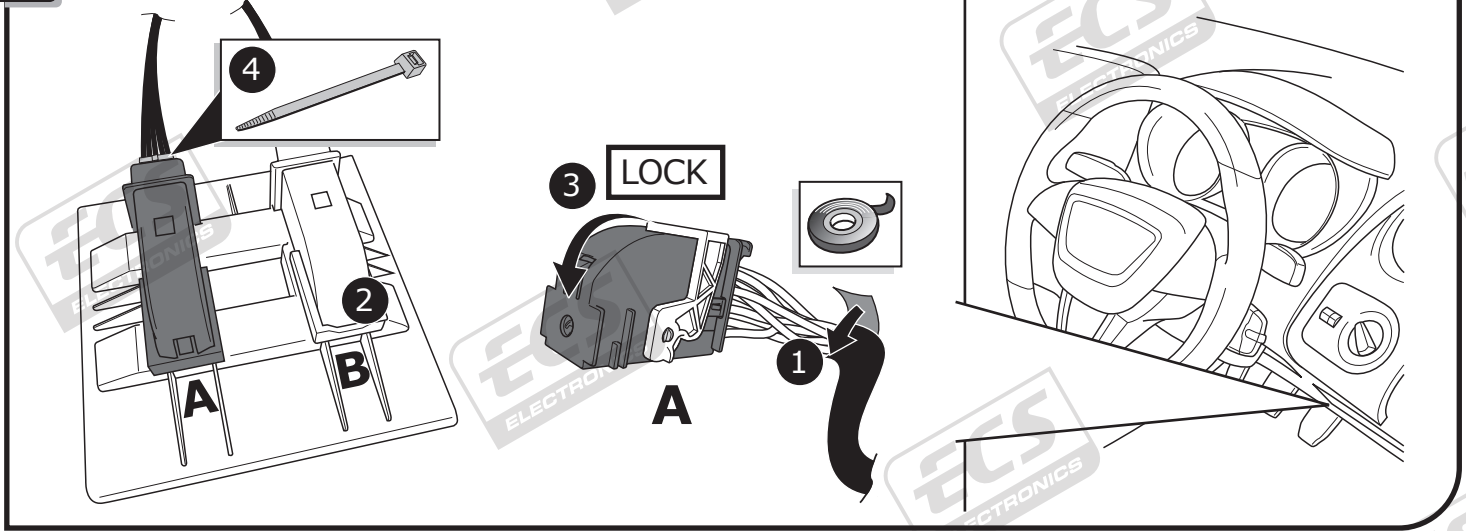
24



25

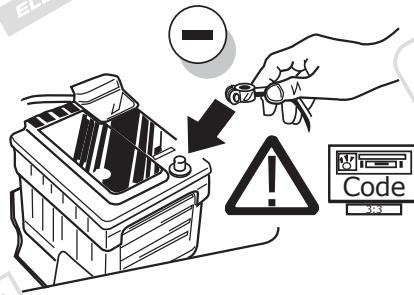


26





27



28

A VAG Service Tester must be used to code the vehicle's Gateway with the additional function for the towing hitch at the dealer.

29

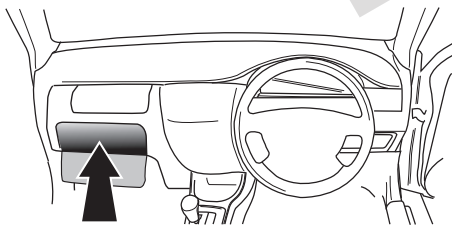


TEST ALL THE CIRCUITS WITH A TEST DEVICE WITH THE CORRECT POWER LOAD FOR EACH FUNCTION. A TEST DEVICE WITH LED'S CANNOT BE USED FOR THIS PURPOSE.

INFO

REINSTALL TRIM.

30



**User guide**

**TECHNICAL SUPPORT**

**CALL 07440 202 052**

**MONDAY TO FRIDAY**  
 08.00 - 11.00 am  
 12.00 - 05.00 pm

**ECS ELECTRONICS**  
 tekniker@ecs-electronics.com  
 www.ecs-electronicsuk.co.uk

SOCKET CONNECTION

DIN/ISO 11446													
	1/L	2	3/31	4/R	5/58-R	6/54	7/58-L	8	9	10	11	12	13
Pmax	21W	21W		21W	42W	3x21W	42W	21W	180W/15Amp	180W/15Amp			
Colour	Black/ White	Blue	Brown	Black/ Green	Grey/ Red	Black/ Red	Grey/ Black	Black	Red	Yellow	Brown	-	Brown