

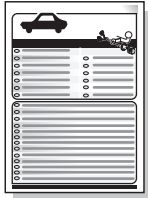
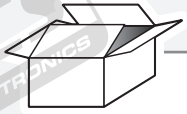
## Ford Ranger MK2

Partnr.: FR-077-D1U

- Fitting instructions electric wiring kit tow bar with 13-P socket up to DIN/ISO Norm 11446.
- We would expressly point out that assembly not carried out properly by a competent installer will result in cancellation of any right to damage compensation, in particular those arising by virtue of the product liability act.
- Contents of these kits and their fitting manuals are subject to alteration without notice, please ensure that these instructions are read and fully understood before commencing installation.
- Do not overload circuits; the maximum loads per connection are detailed in this manual.
- Attention! Before Installation, please read this manual carefully and inform your customer to consult the vehicle owners manual to check for any vehicle modifications required before towing.
- In the event of functional problems, troubleshooting must be limited to about 0.5 hours, contact the technical support:  
[t.skinner@ecs-electronics.com](mailto:t.skinner@ecs-electronics.com) / 07440 202 052.



# Part list

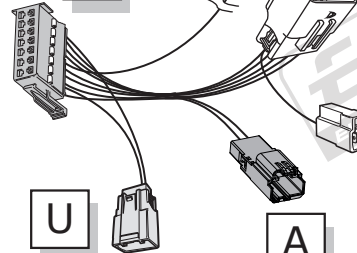


C



X

M1

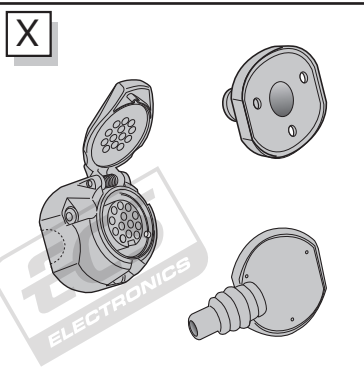


I

G

U

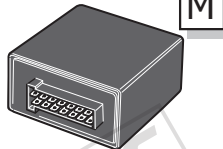
A



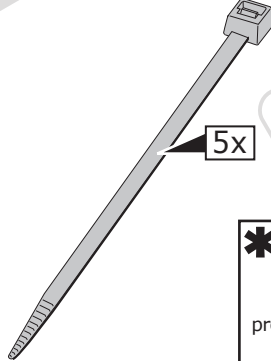
X



1x

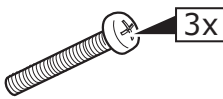


M



5x

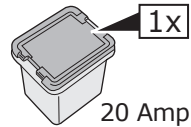
<p>* OPTION +15</p> <p>preparation for</p>	
	<p>+15</p> <p>Red</p>



3x



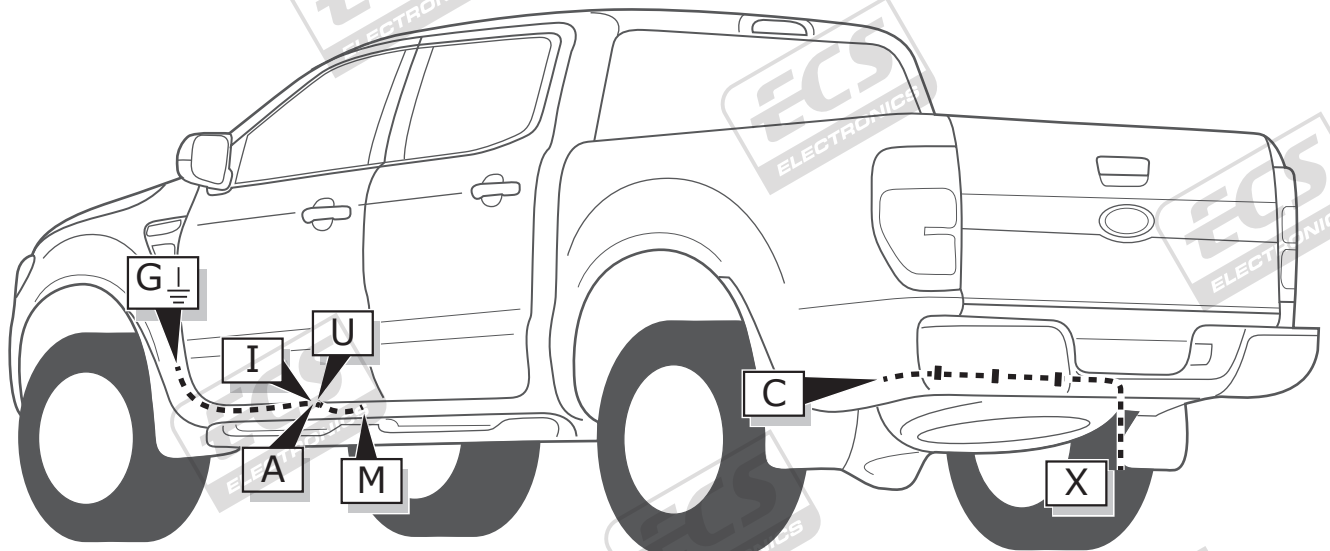
3x



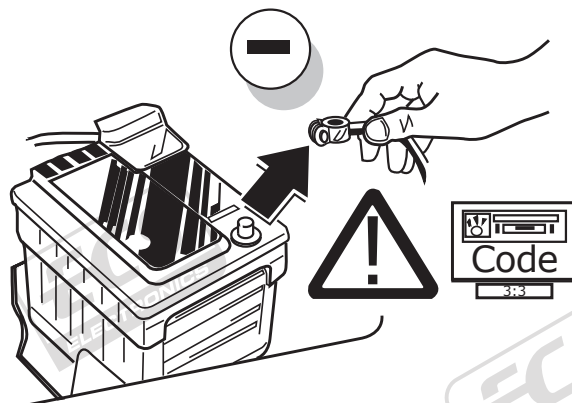
1x

20 Amp.

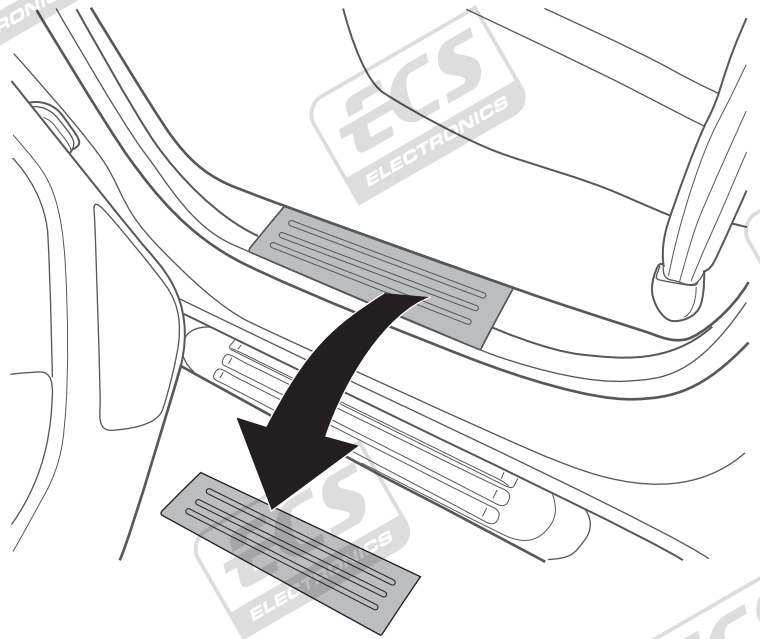
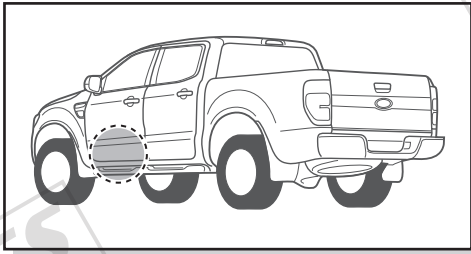
**ROUTING**



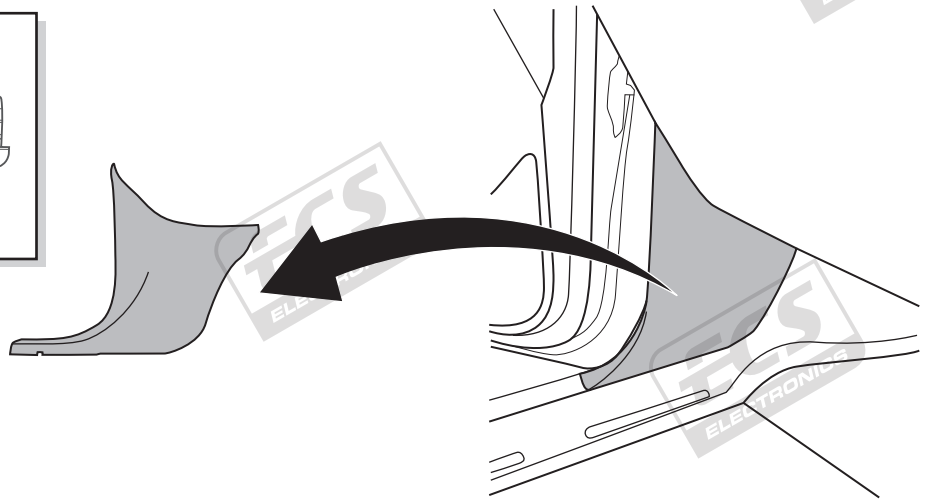
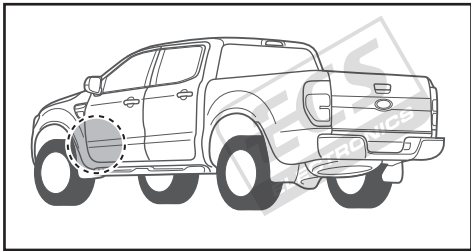
**1**



2

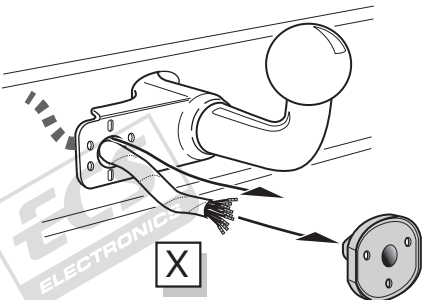


3

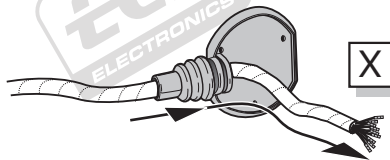


A

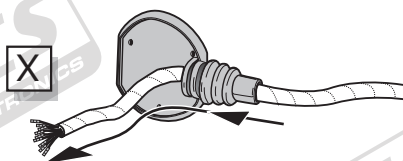
Option 1



Option 2



Option 3

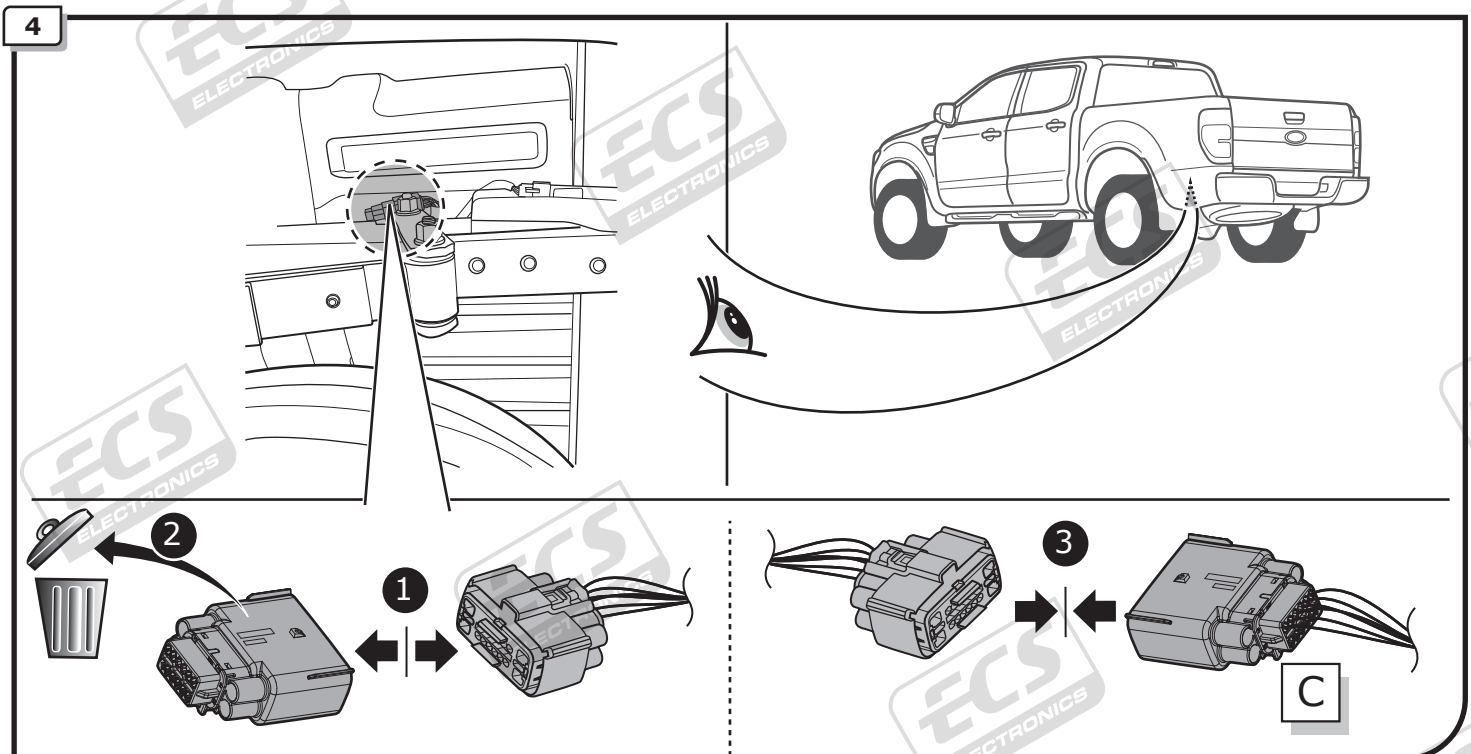
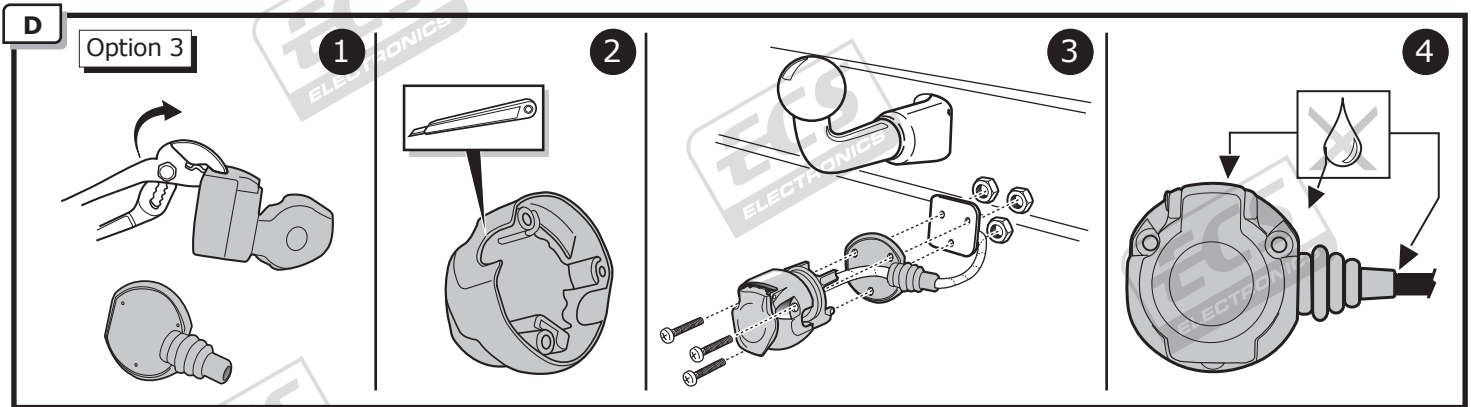
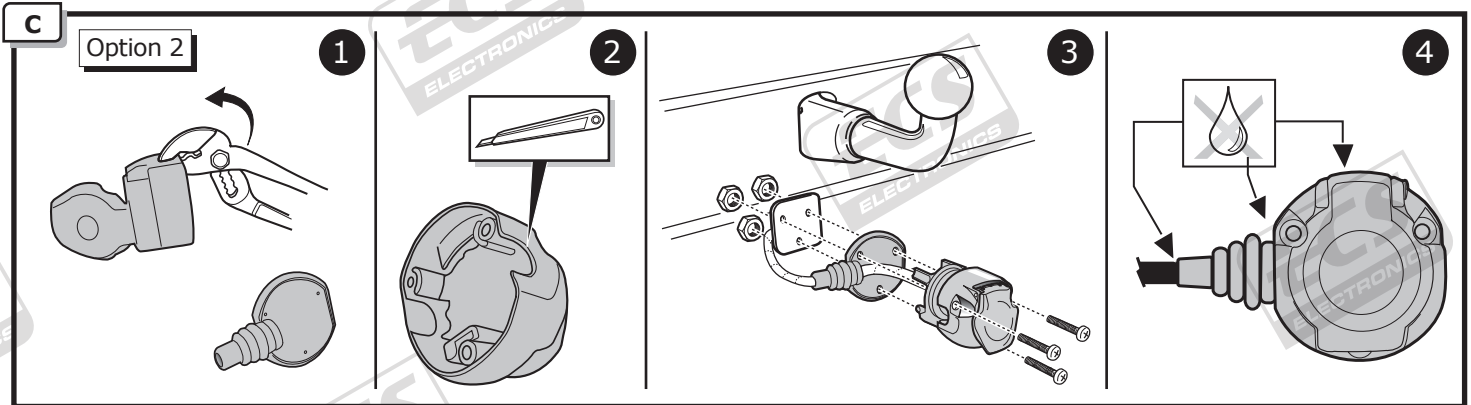
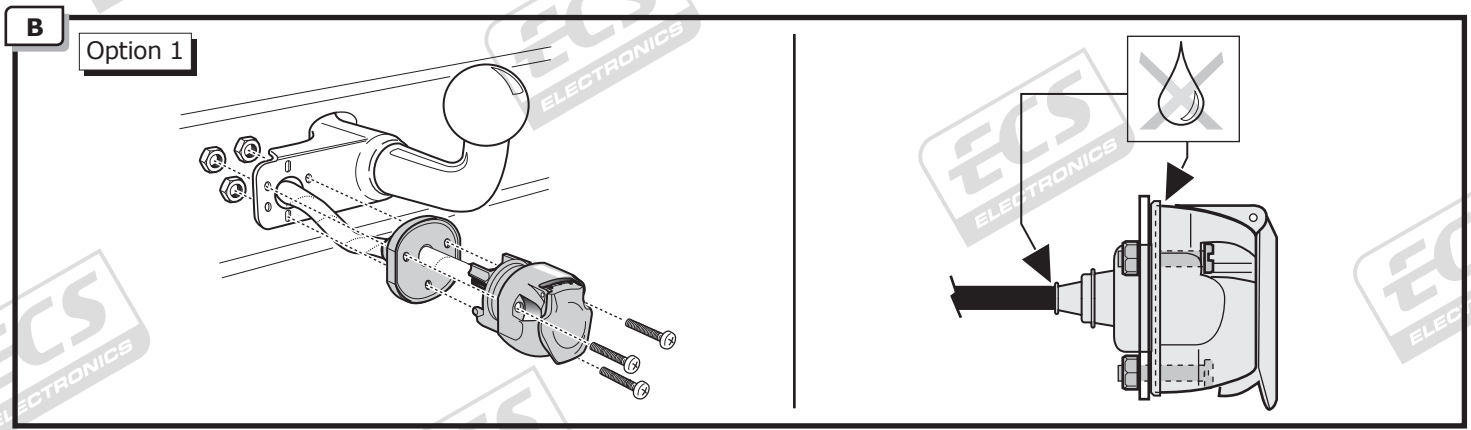


INFO

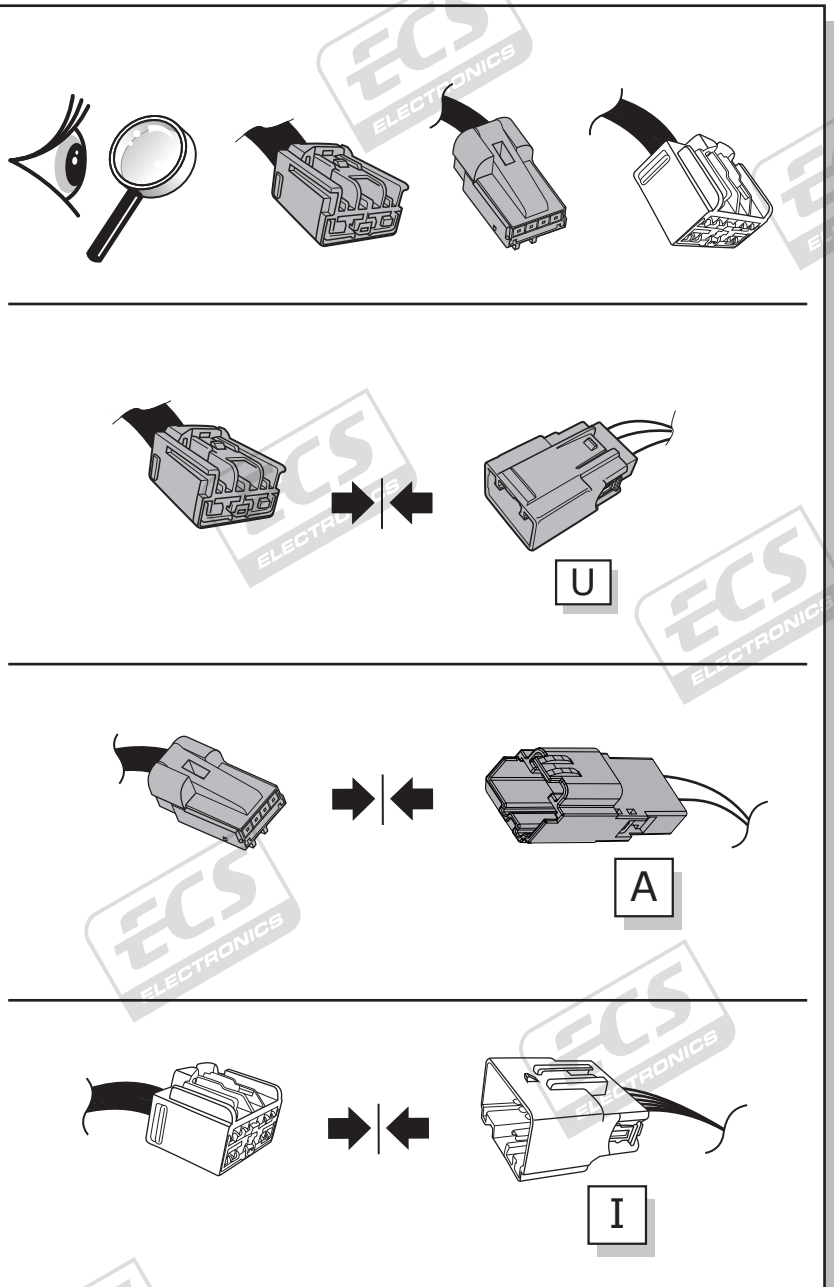
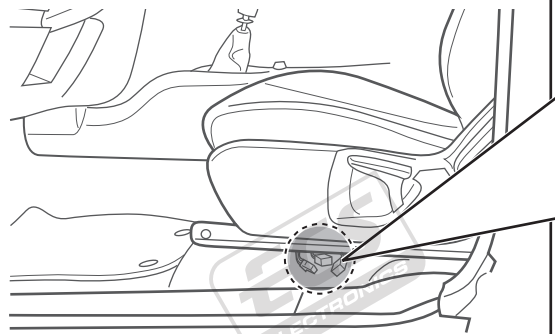
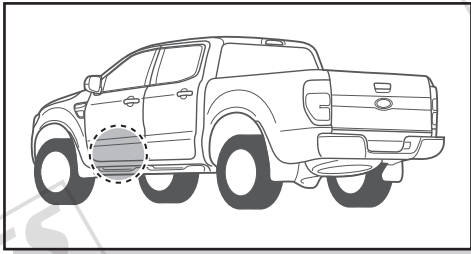
SOCKET CONNECTION



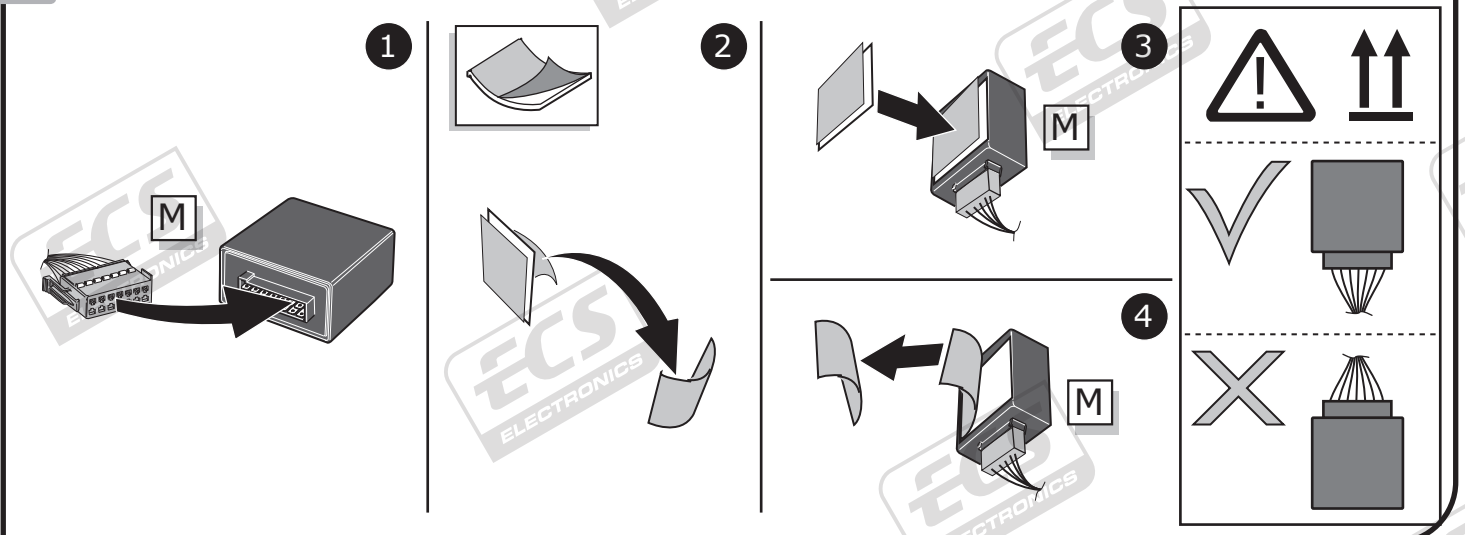
Pag. 10



5

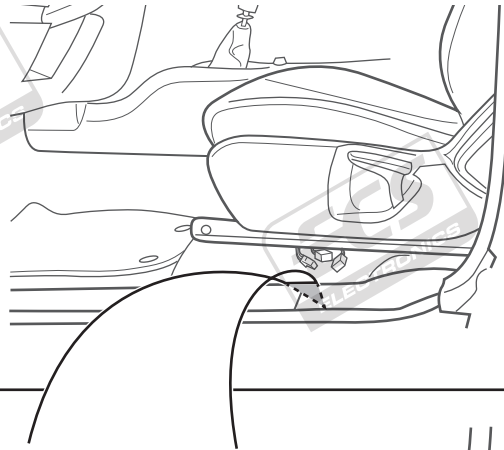
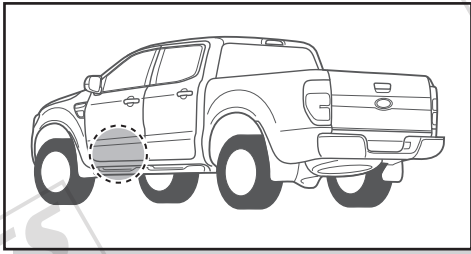


6





7

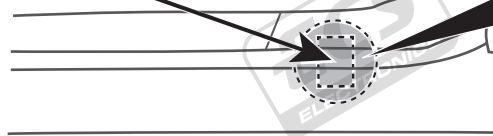
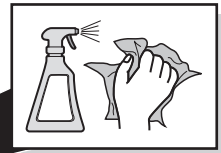


M

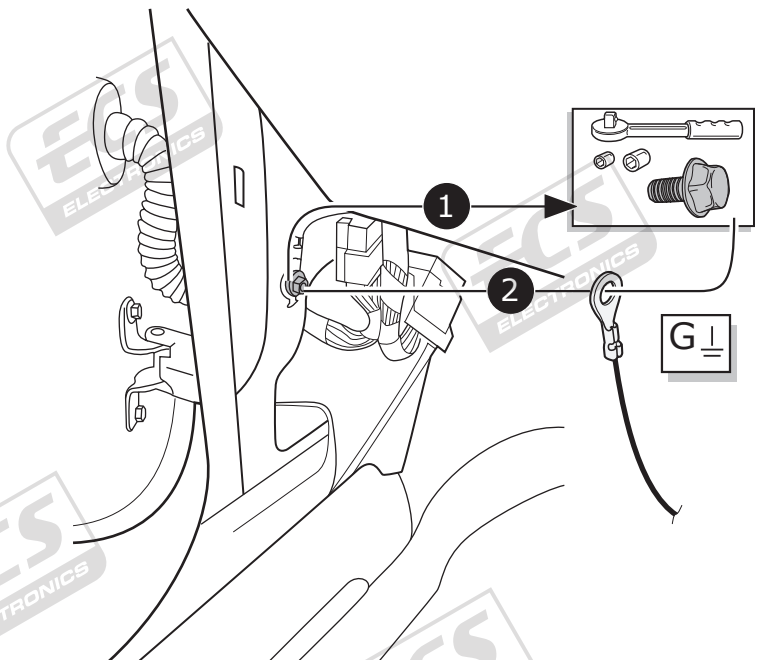
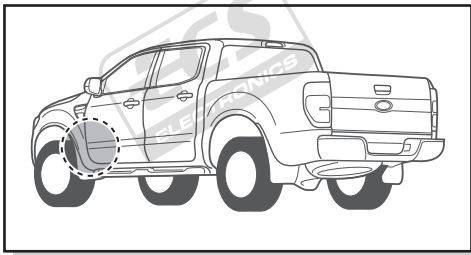


2

1

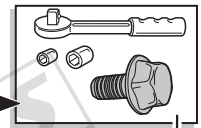


8



1

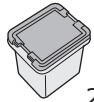
2



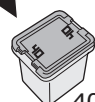
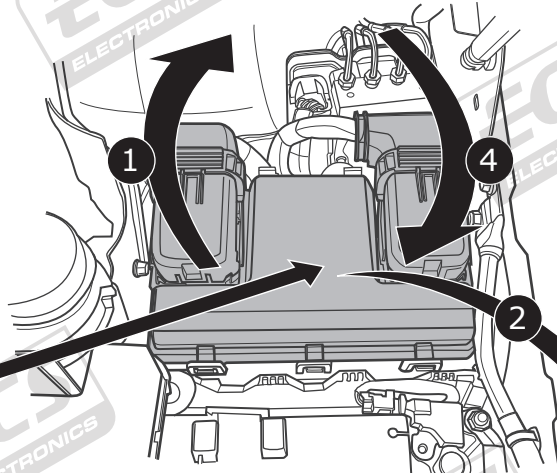
G!

**Option 1**

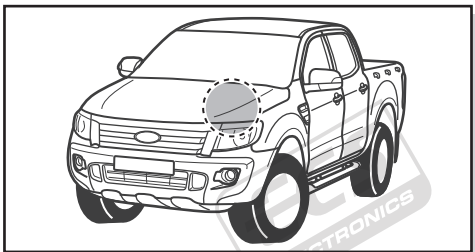
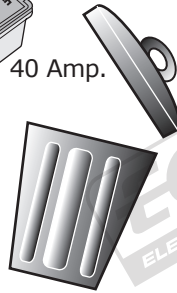
**Pos. 87**



20 Amp.

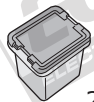


40 Amp.

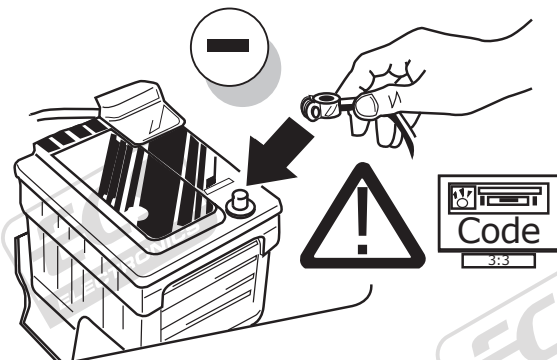
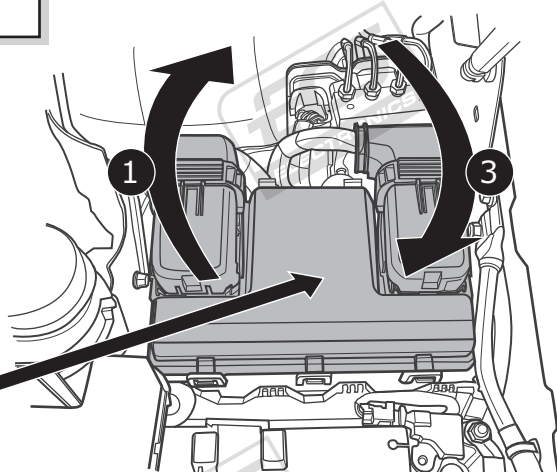


**Option 2**

**Pos. 87**



20 Amp.

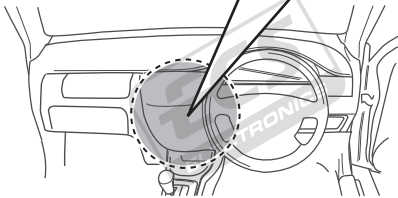
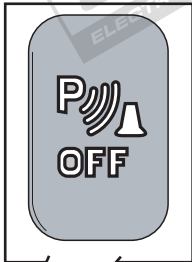
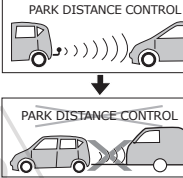




11

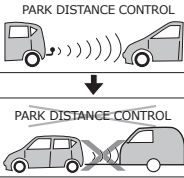
Option 1

Manual PDC



Option 2

Auto PDC



12

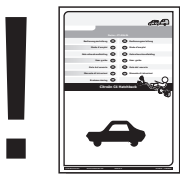
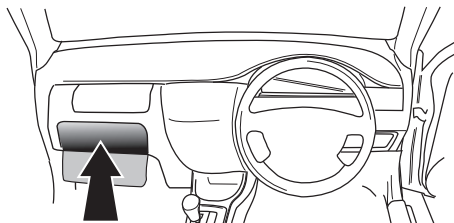


TEST ALL THE CIRCUITS WITH A TEST DEVICE WITH THE CORRECT POWER LOAD FOR EACH FUNCTION. A TEST DEVICE WITH LED'S CANNOT BE USED FOR THIS PURPOSE.

INFO

REINSTALL TRIM.

13



User guide

SOCKET CONNECTION

DIN/ISO 11446													
	1/L	2	3/31	4/R	5/58-R	6/54	7/58-L	8	9	10	11	12	13
Pmax	21W	2x21W		21W	52W	3x21W	52W	2x21W	180W/15Amp	180W/15Amp			
Colour	Yellow	Blue	White	Green	Brown	Red 1,00 mm <sup>2</sup>	Black	Black/ Red	Brown/ White	Red 2,50 mm <sup>2</sup>	White	-	White