

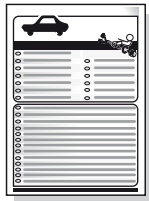
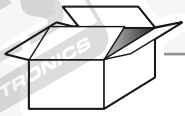
Ford Kuga II 03/2013 >> 01/2020

Partnr.: FR-060-D1U

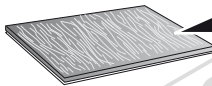
- Fitting instructions electric wiring kit tow bar with 13-P socket up to DIN/ISO Norm 11446.
- We would expressly point out that assembly not carried out properly by a competent installer will result in cancellation of any right to damage compensation, in particular those arising by virtue of the product liability act.
- Contents of these kits and their fitting manuals are subject to alteration without notice, please ensure that these instructions are read and fully understood before commencing installation.
- Do not overload circuits; the maximum loads per connection are detailed in this manual.
- Attention! Before Installation, please read this manual carefully and inform your customer to consult the vehicle owners manual to check for any vehicle modifications required before towing.
- In the event of functional problems, troubleshooting must be limited to about 0.5 hours, contact the technical support:
ts-uk@ecs-electronics.com / 07440 202 052.



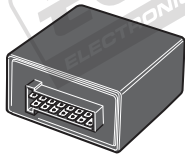
Part list



1x

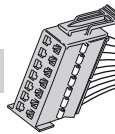


1x



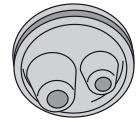
M

M



L1

L3

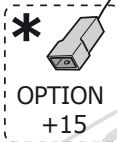


T



L2

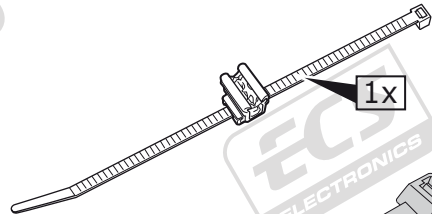
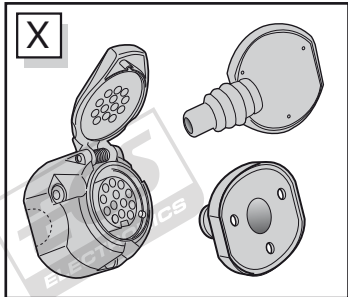
G I



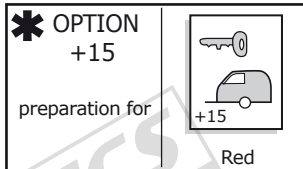
*
OPTION
+15

X

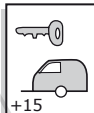
X



1x



* OPTION
+15
preparation for



+15

Red

15x



3x



1x

20 Amp.



2x

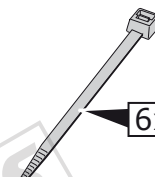


3x



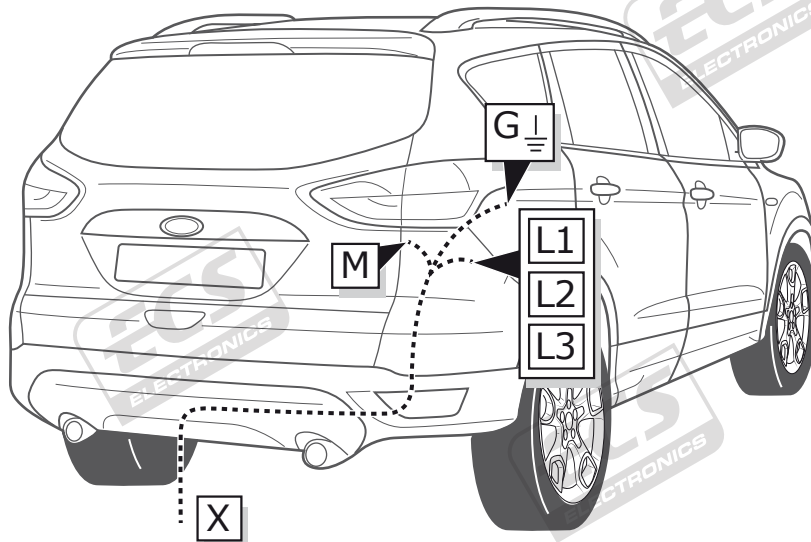
1x

15 Amp.

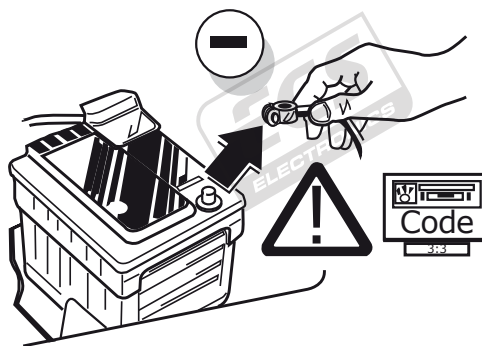


6x

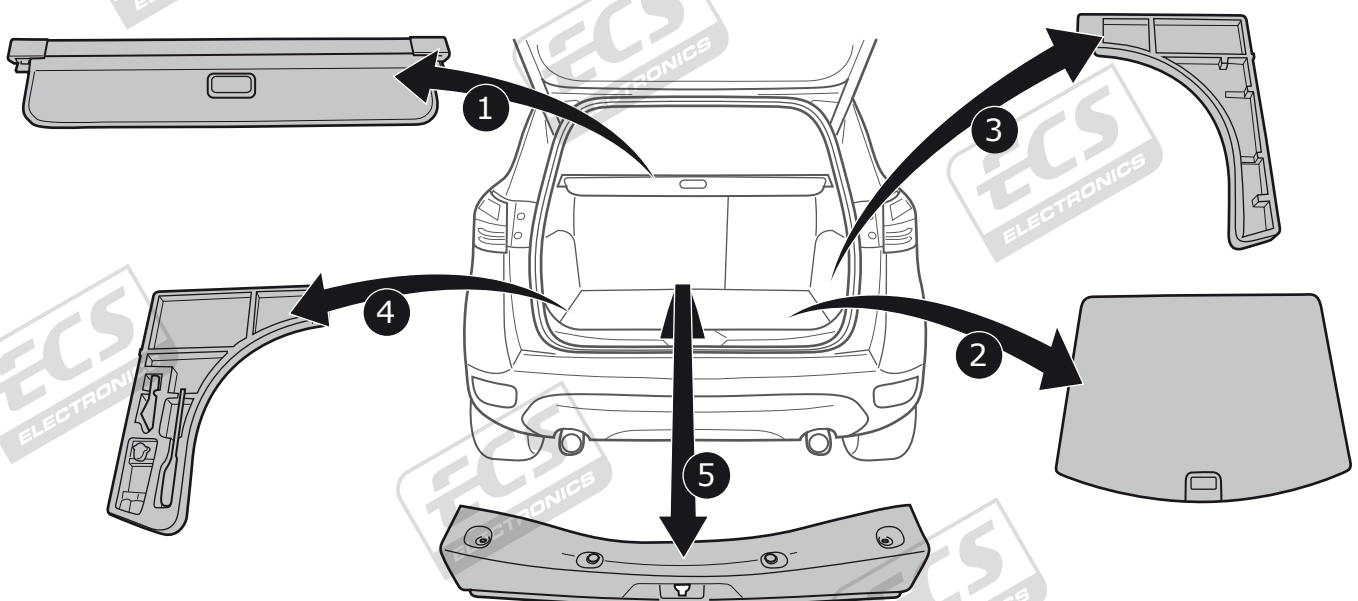
ROUTING



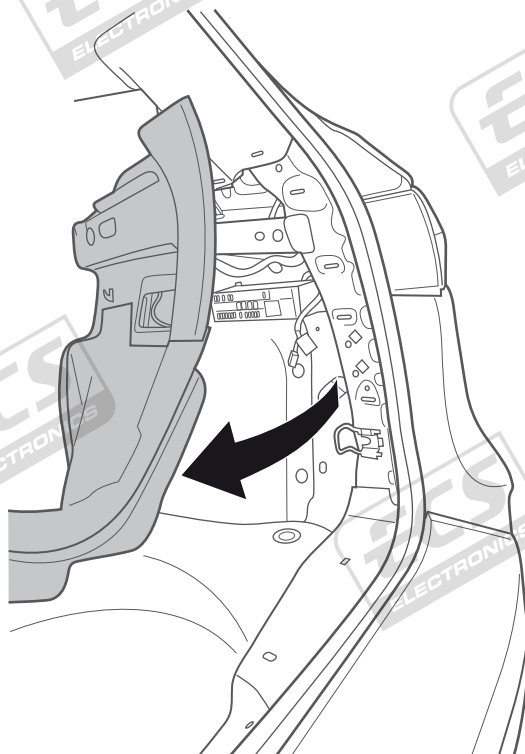
1



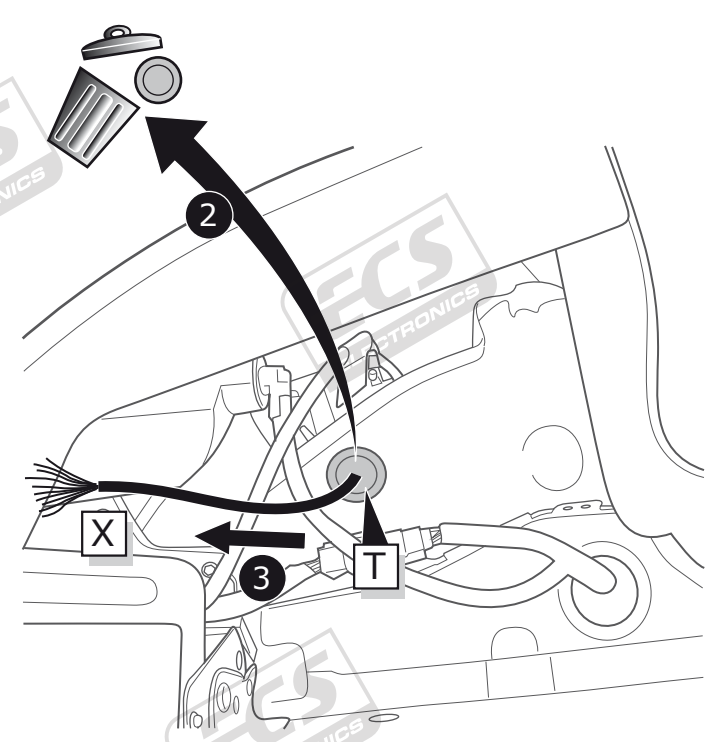
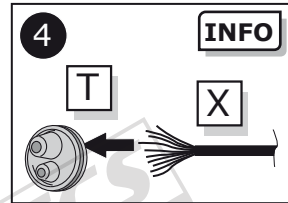
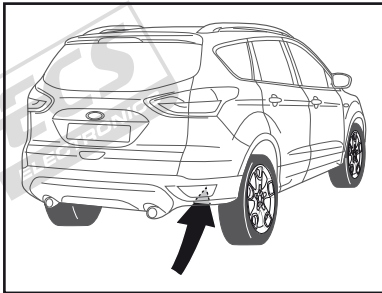
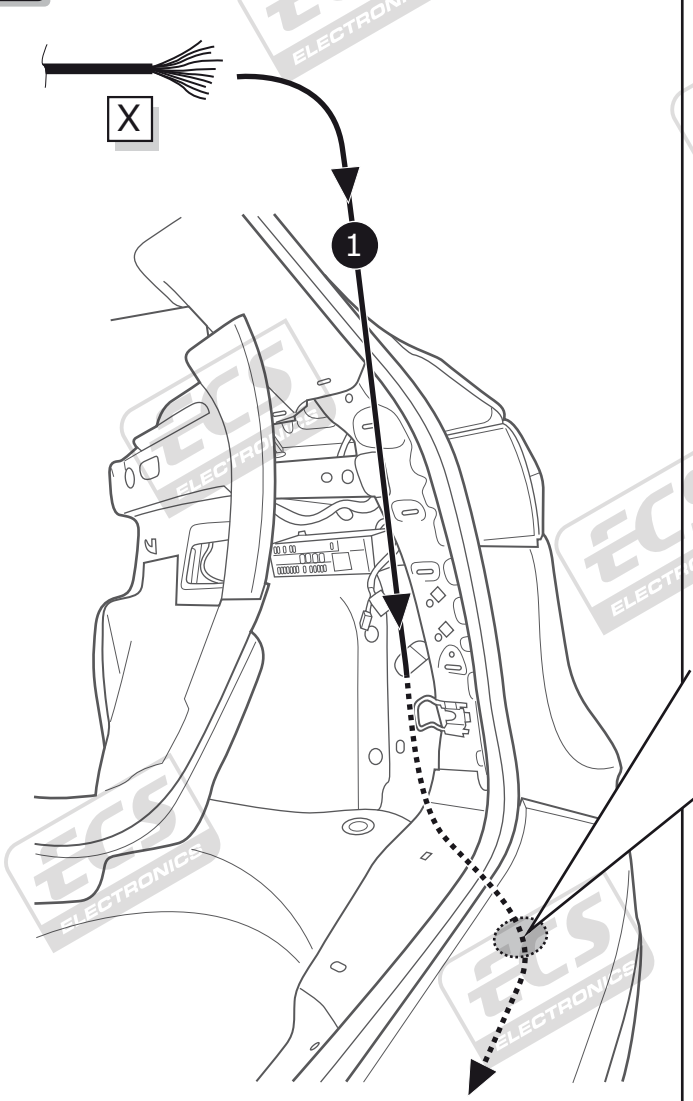
2

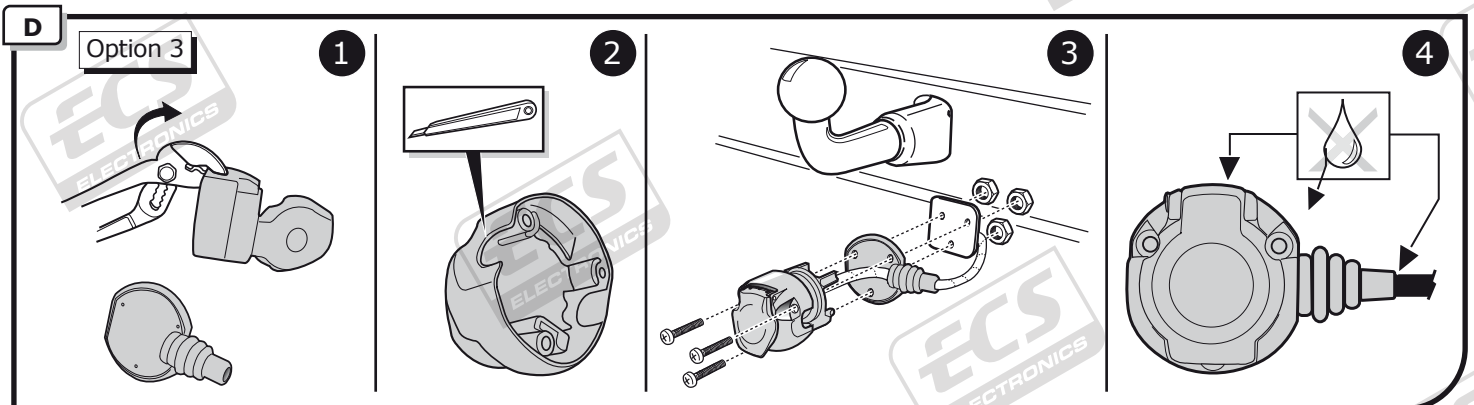
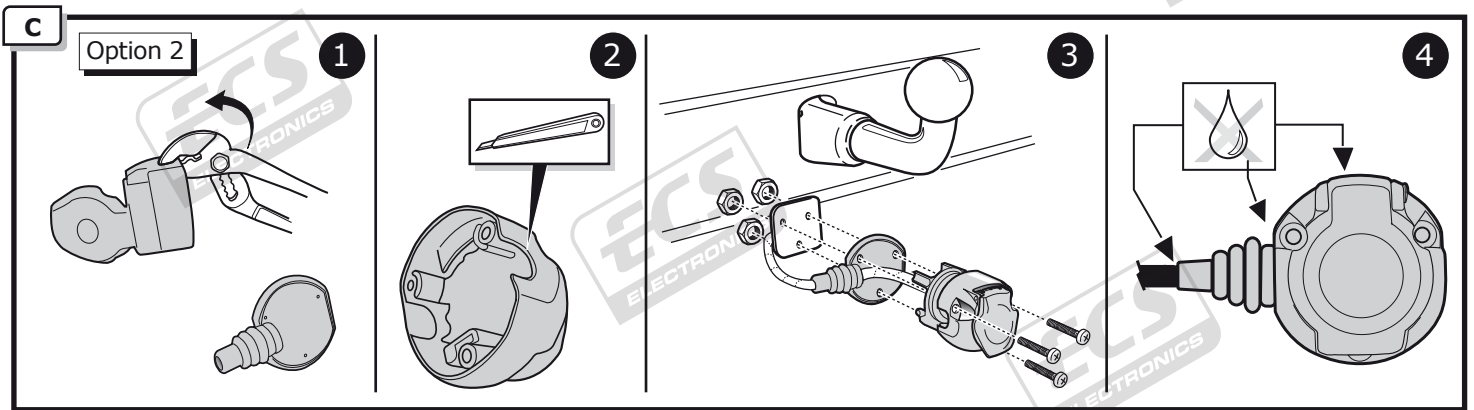
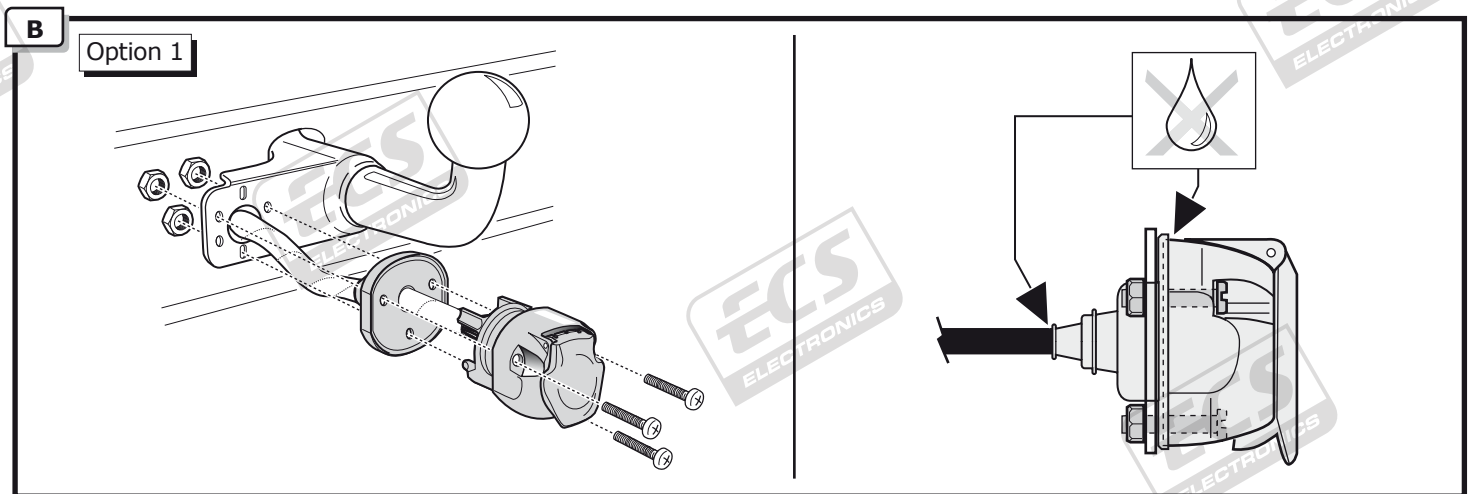
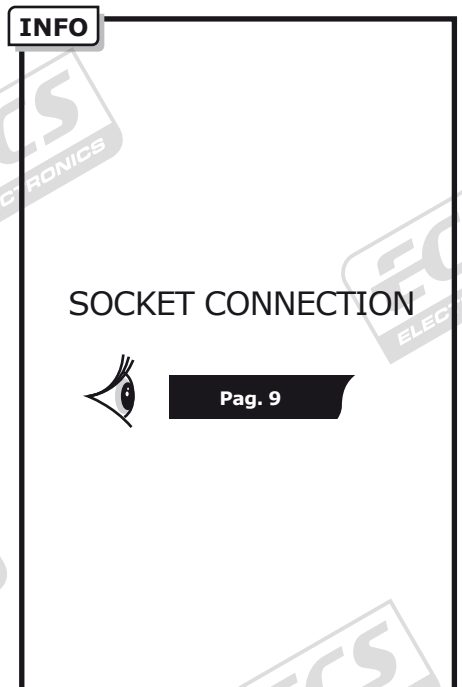
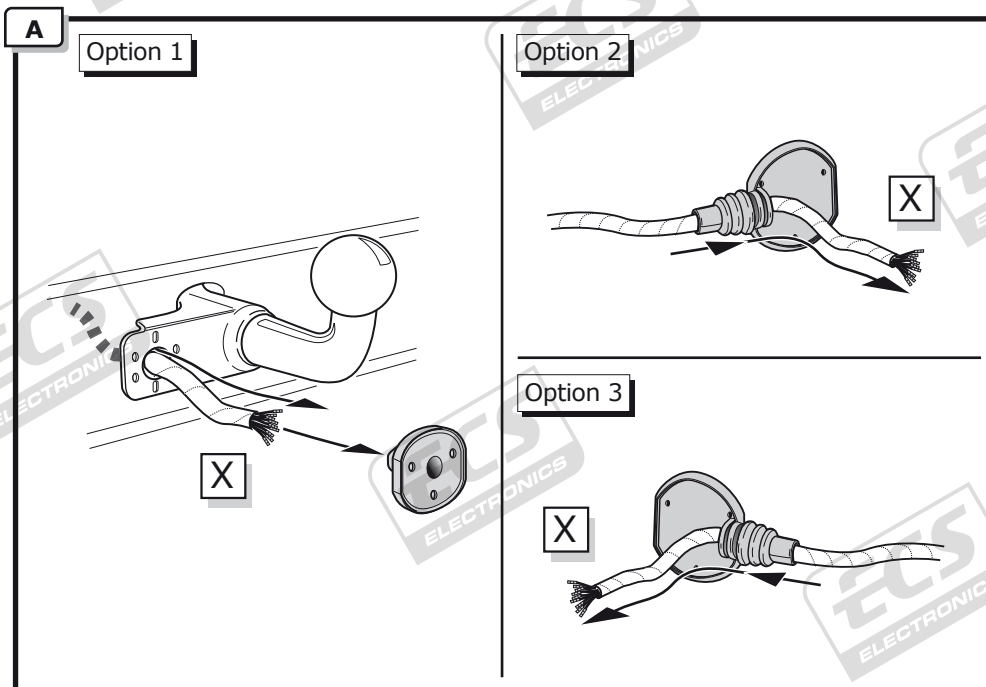


3

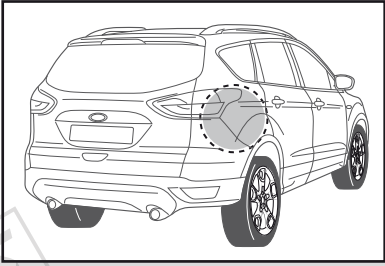


4

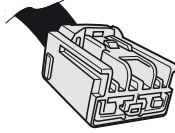




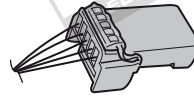
5



Option 1



2pole Grey

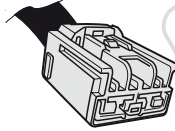


5pole Green

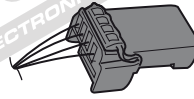


6

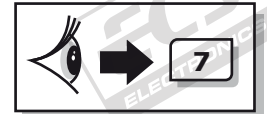
Option 2



2pole Grey



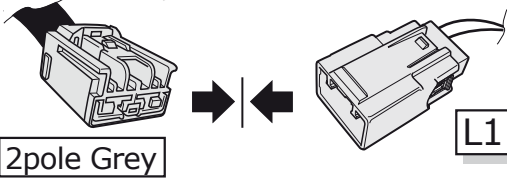
4pole Black



7

6

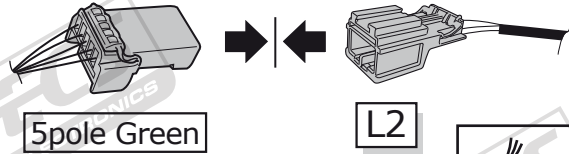
Option 1



2pole Grey

L1

1



5pole Green

L2

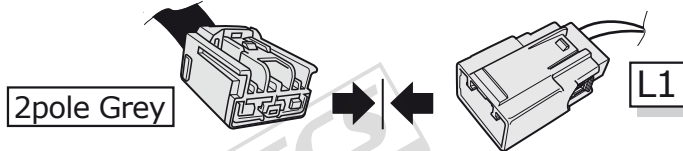
2



8

7

Option 2



2pole Grey

L1

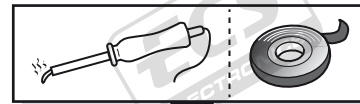
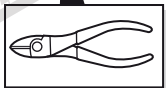
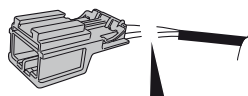
1

2

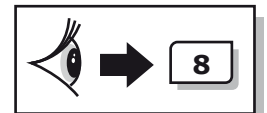
3

4pole Black

L2

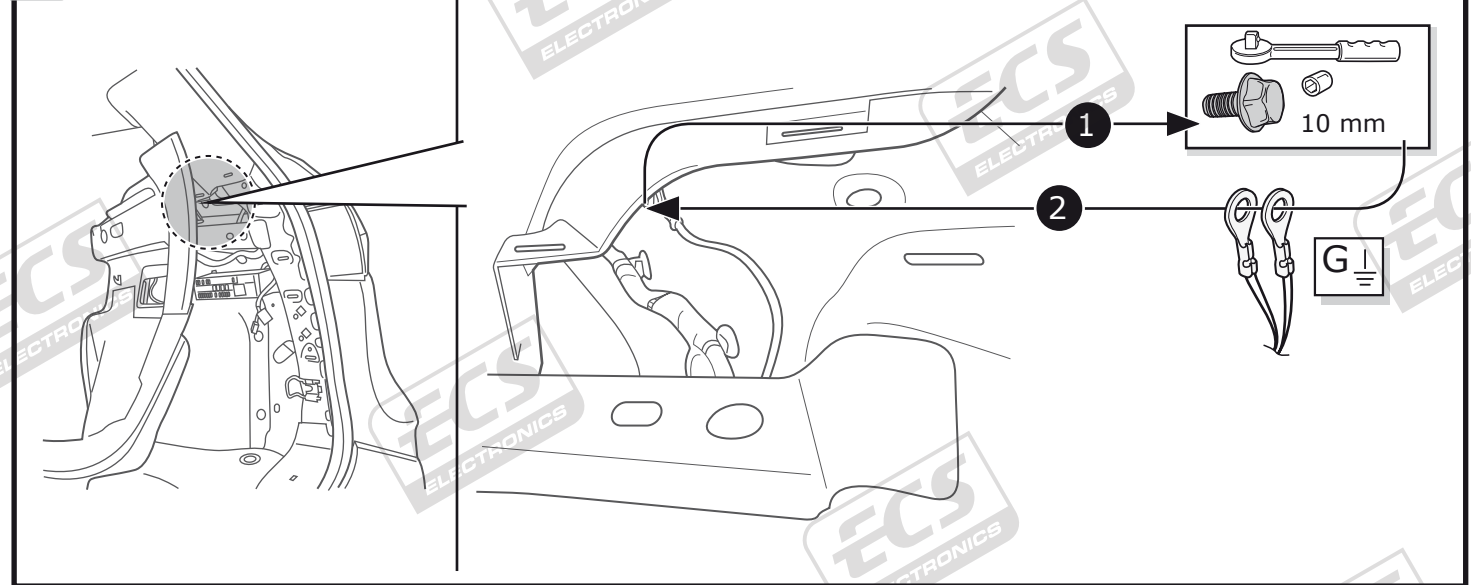


Brown	→	Grey/Orange
Green	→	Purple/Orange
Blue/Red	→	Black/Blue

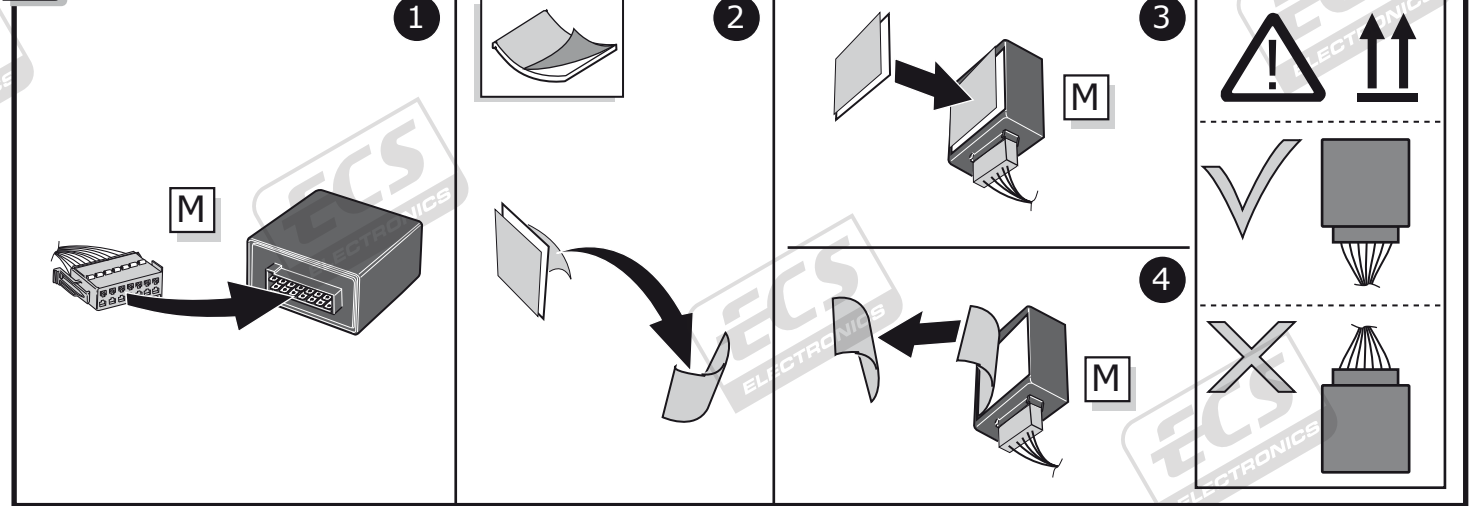


8

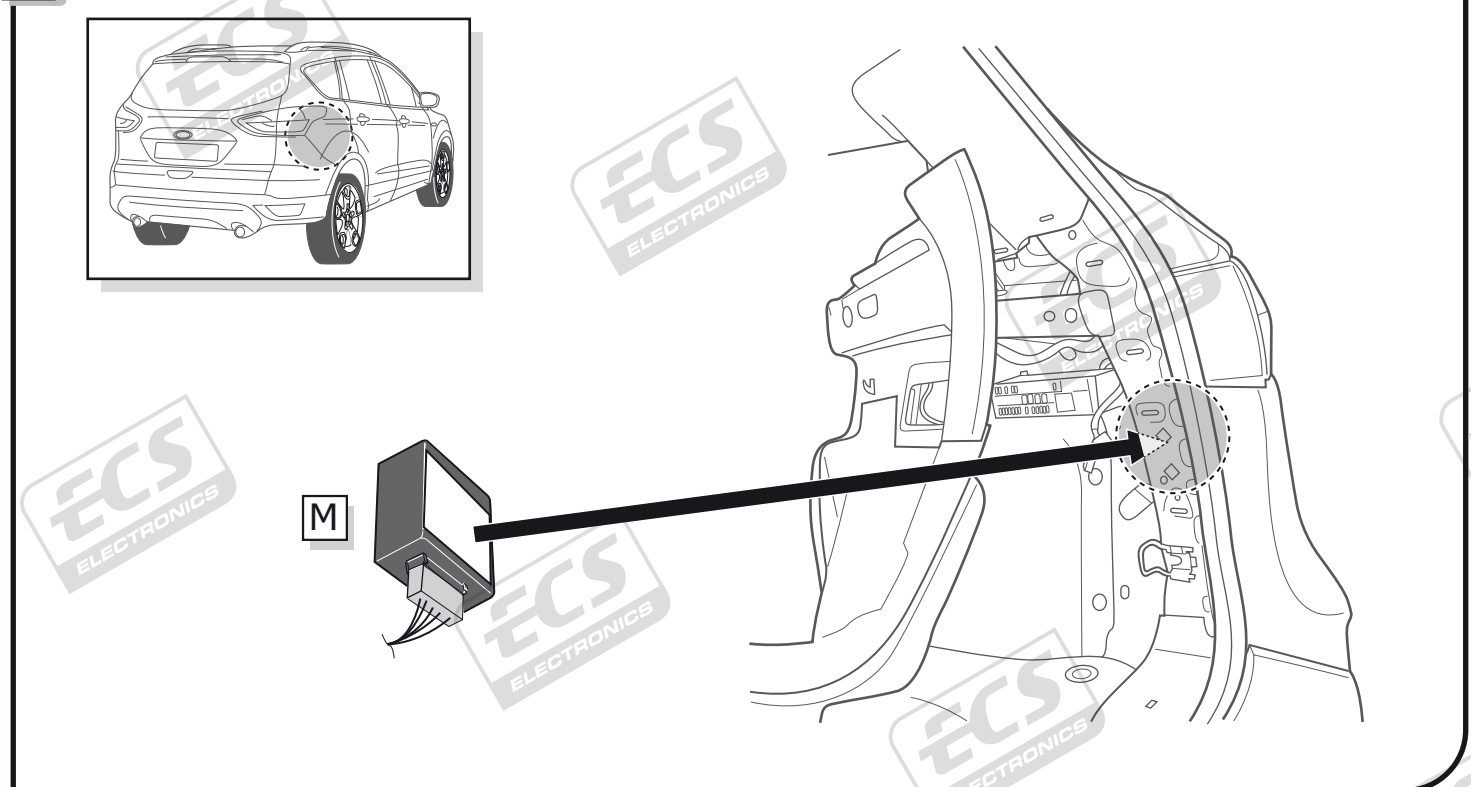
8



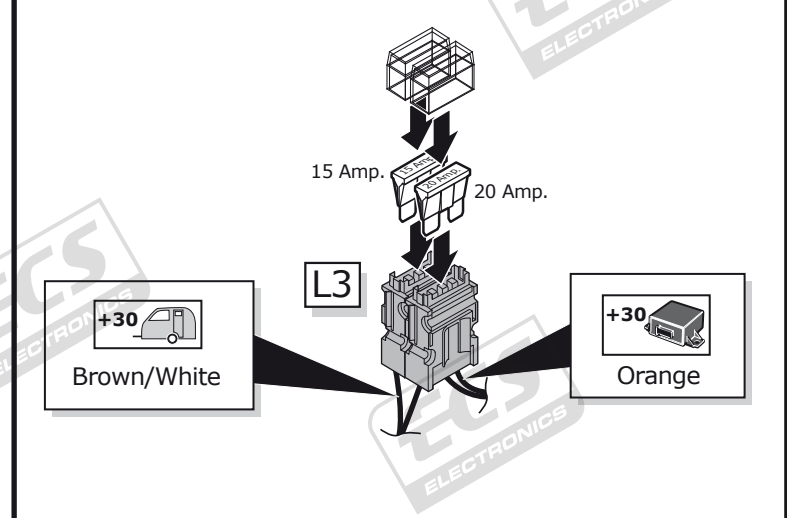
9



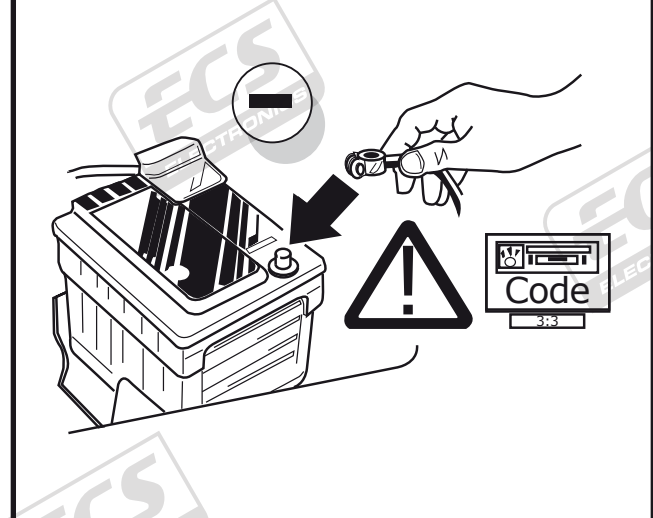
10



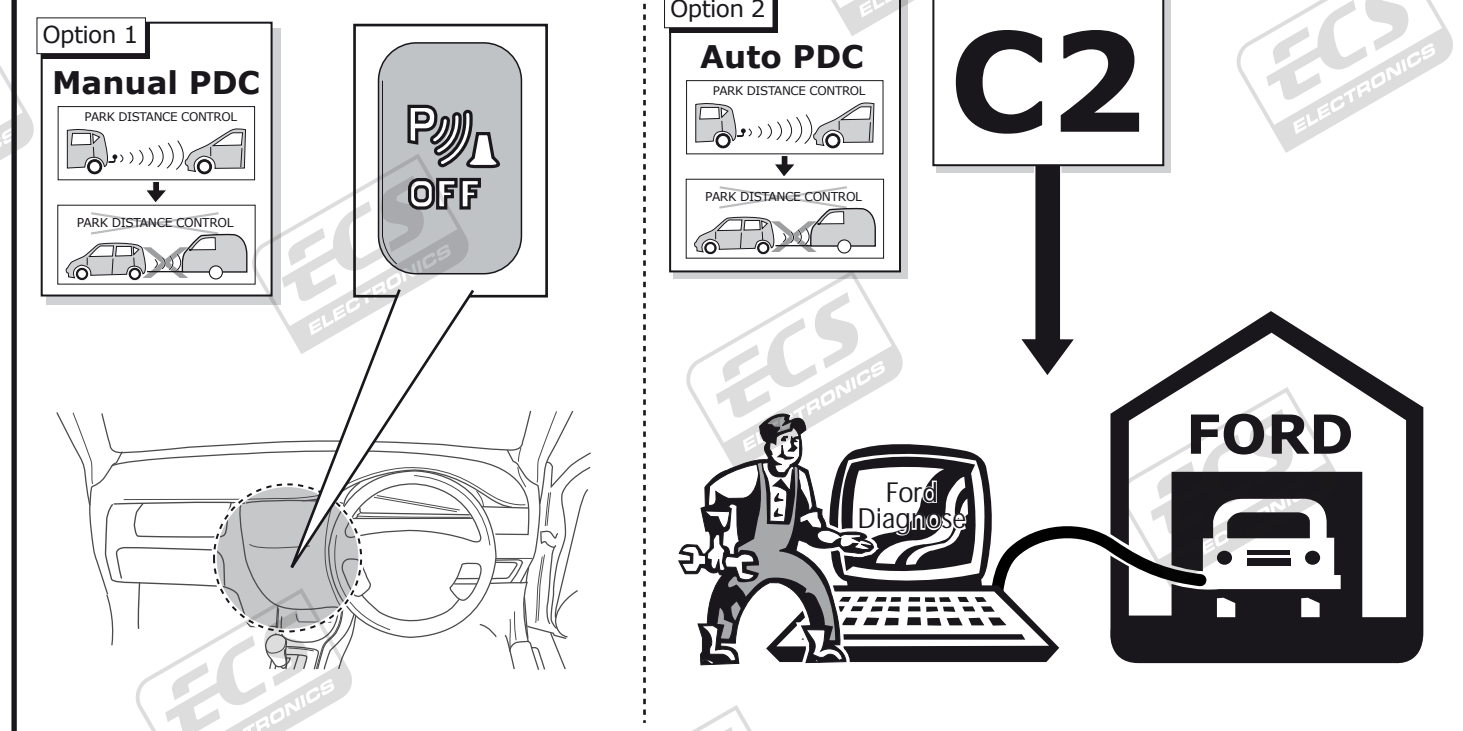
11



12



13



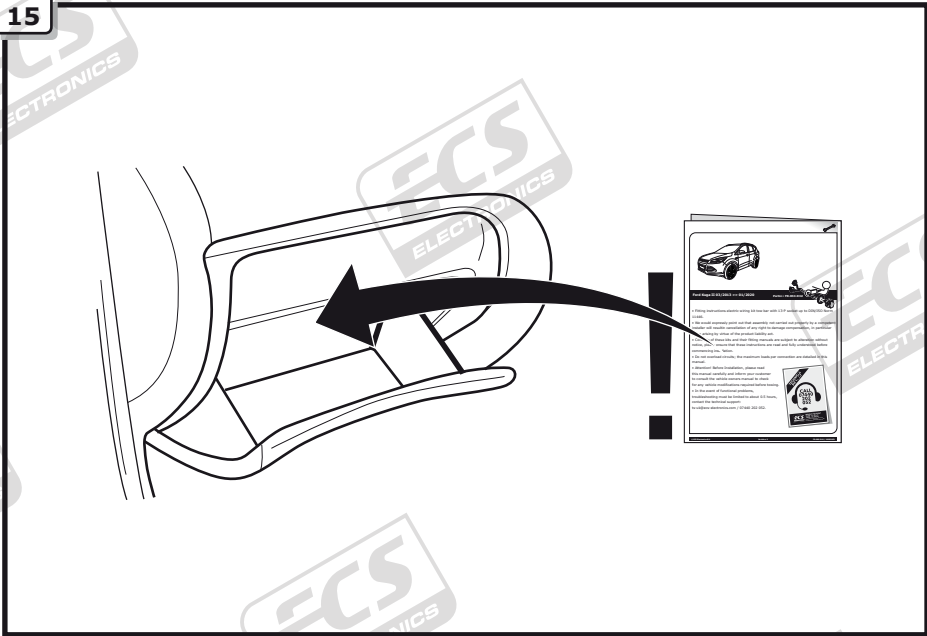
14

! TEST ALL THE CIRCUITS WITH A TEST DEVICE WITH THE CORRECT POWER LOAD FOR EACH FUNCTION. A TEST DEVICE WITH LED'S CANNOT BE USED FOR THIS PURPOSE.

INFO

REINSTALL TRIM.

15



INFO

SOCKET CONNECTION

DIN/ISO 11446													
	1/L	2	3/31	4/R	5/58-R	6/54	7/58-L	8	9	10	11	12	13
Pmax	21W	21W		21W	42W	3x21W	42W	21W	180W/15Amp	180W/15Amp			
Colour	Yellow	Blue	White	Green	Brown	Red 1,00 mm ²	Black	Black/ Red	Brown/ White	Red 2,50 mm ²	White	-	White