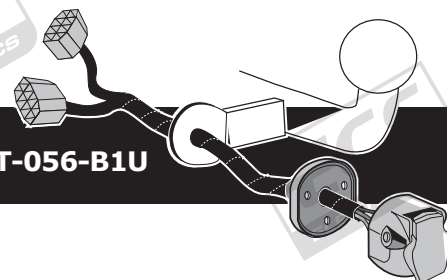


Citroën Berlingo 06/2015-
Peugeot Partner 06/2015-

Partnr.: CT-056-B1U



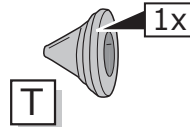
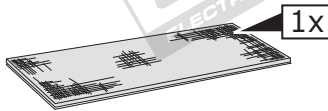
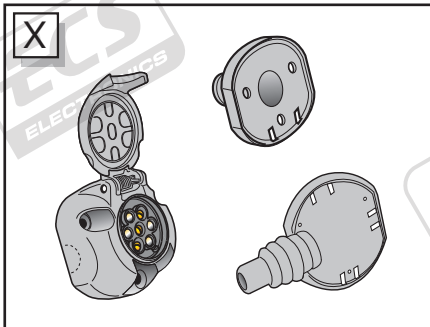
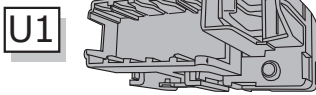
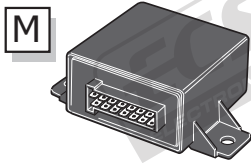
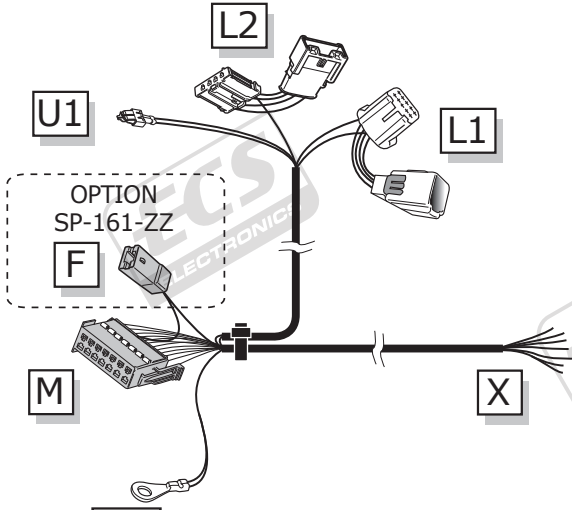
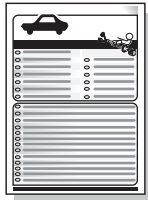
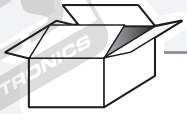
- Fitting instructions electric wiring kit tow bar with 12-N socket up to DIN/ISO Norm 1724.
- We would expressly point out that assembly not carried out properly by a competent installer will result in cancellation of any right to damage compensation, in particular those arising by virtue of the product liability act.
- Contents of these kits and their fitting manuals are subject to alteration without notice, please ensure that these instructions are read and fully understood before commencing installation.
- Do not overload circuits; the maximum loads per connection are detailed in this manual.
- Attention! Before Installation, please read this manual carefully and inform your customer to consult the vehicle owners manual to check for any vehicle modifications required before towing.
- In the event of functional problems, troubleshooting must be limited to about 0.5 hours, contact the technical support:
t.skinner@ecs-electronics.com / 07440 202 052.

TECHNICAL SUPPORT

CALL
07440
202
052

ECS ELECTRONICS
MONDAY TO FRIDAY
08.00 - 11.00 am
12.00 - 05.00 pm
t.skinner@ecs-electronics.com
www.ecs-electronicsuk.co.uk

Part list

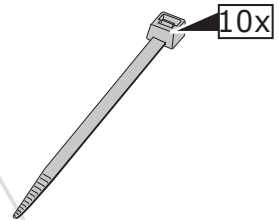
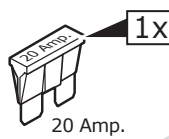
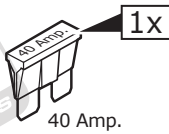
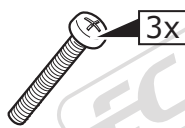


UN-243-YZ
Optional reverse lamp pre-wire extension included

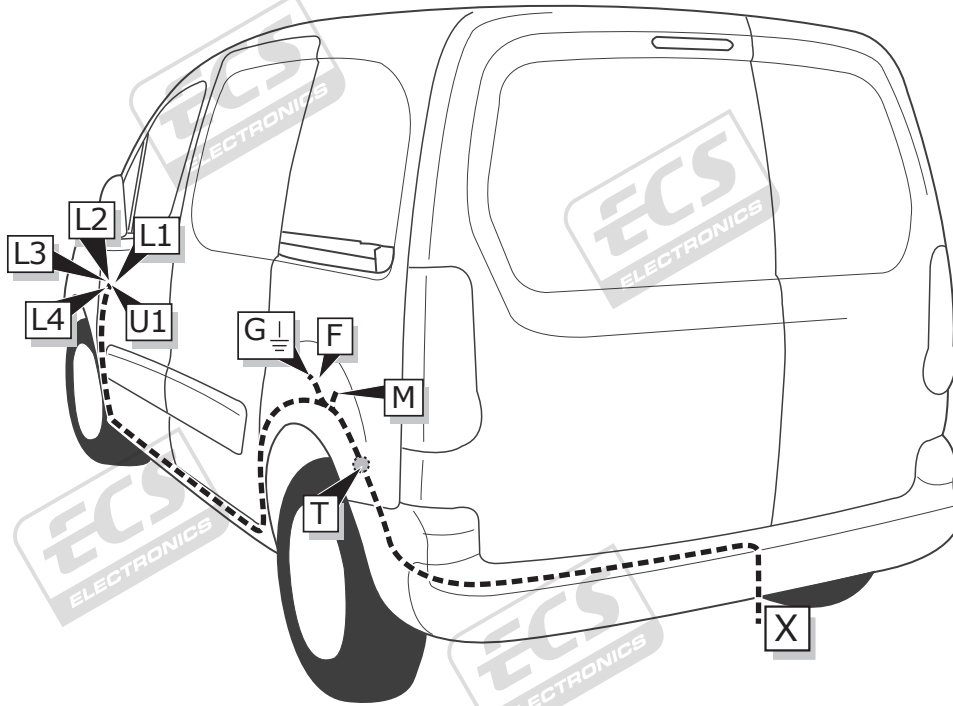
Pag. 13

Option SP-161-ZZ: Fog off extension harness

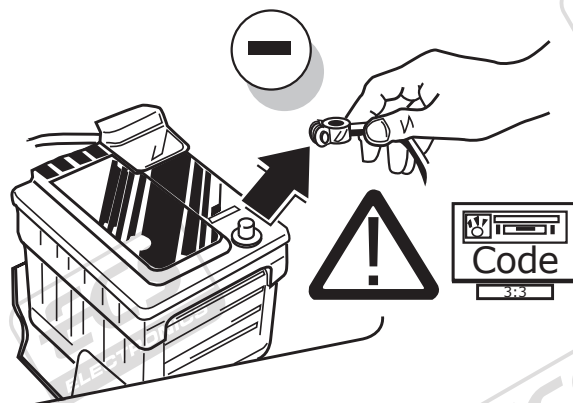
Pag. 11



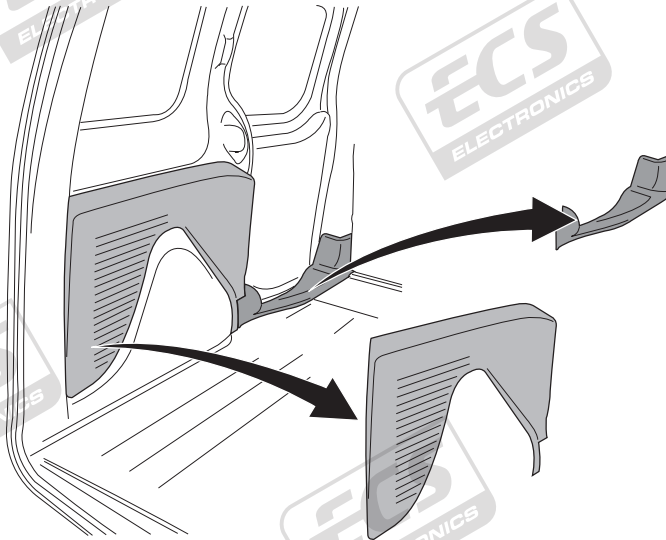
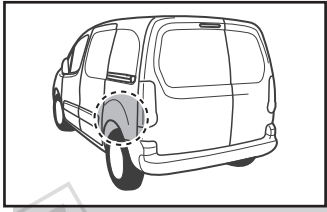
ROUTING



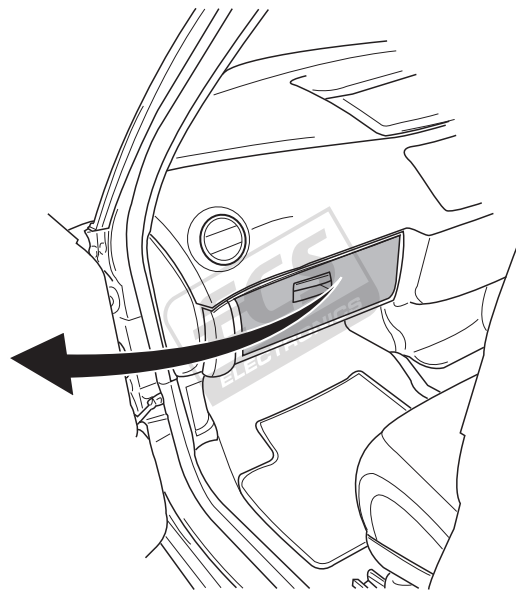
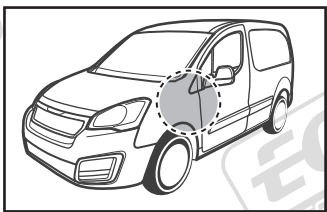
1



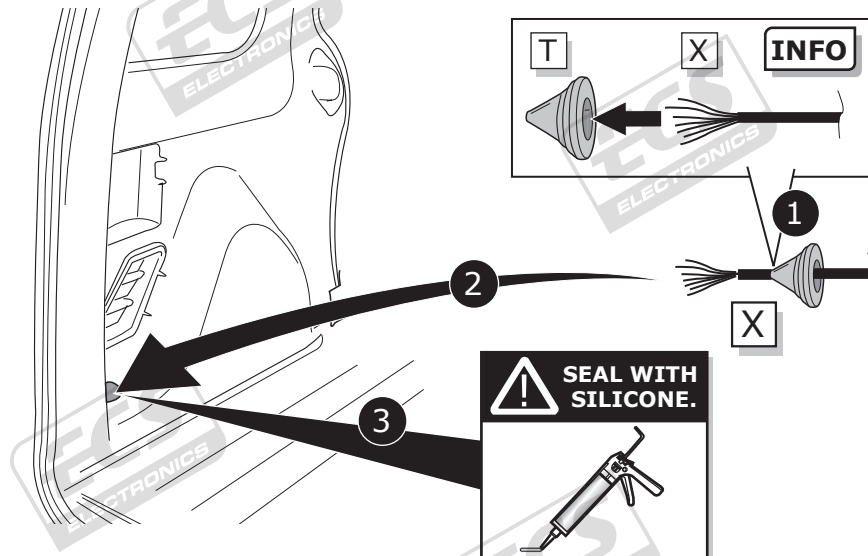
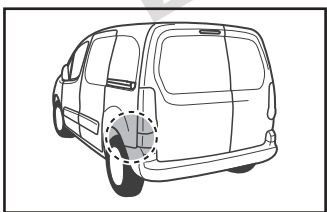
2

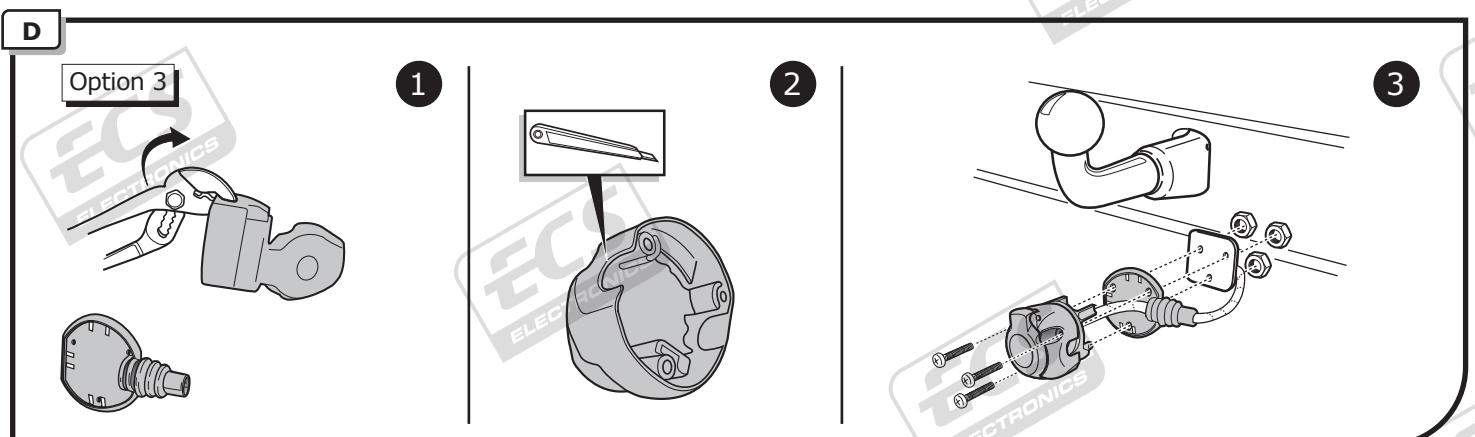
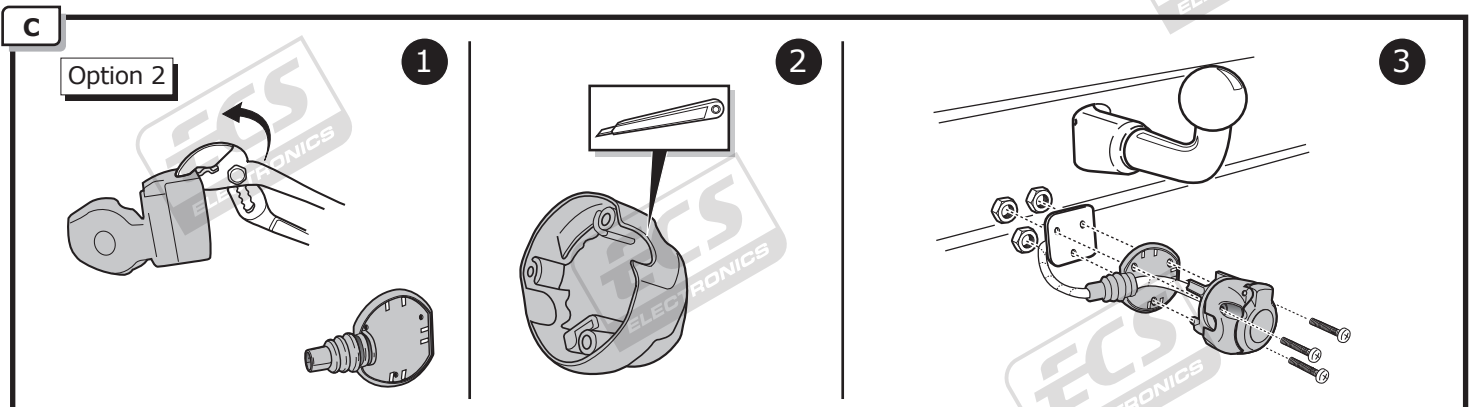
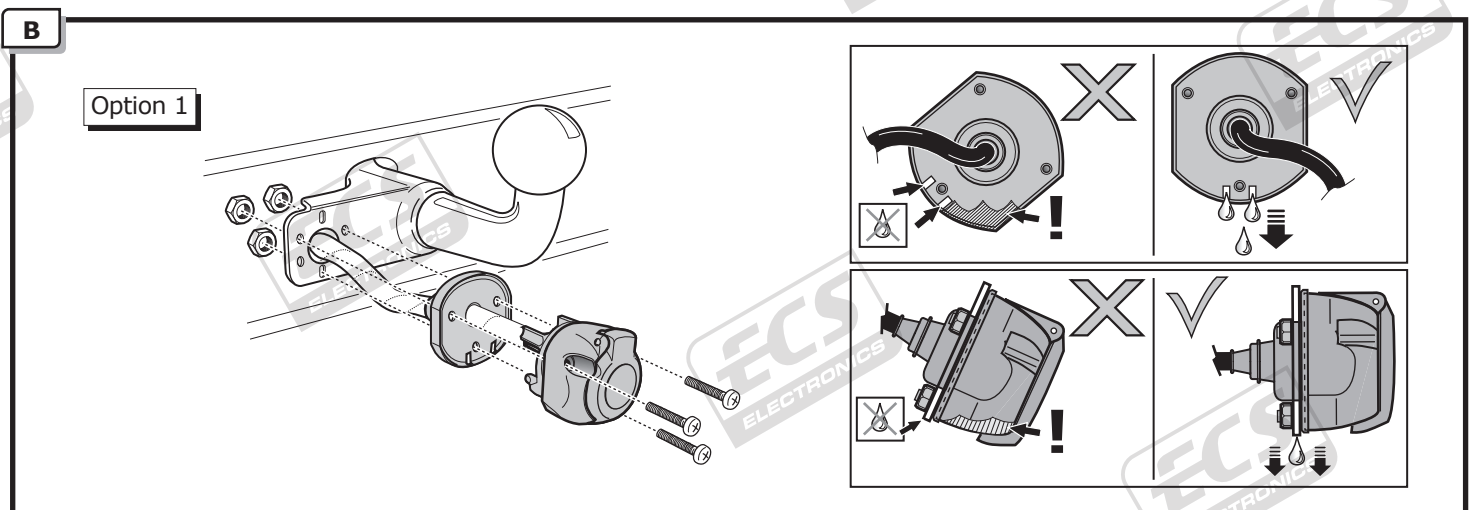
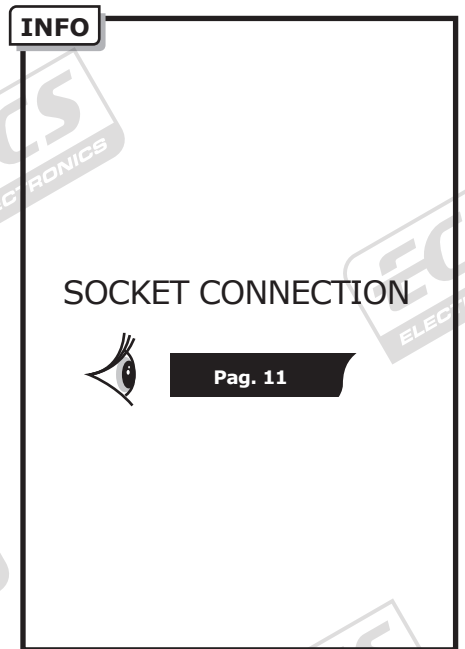
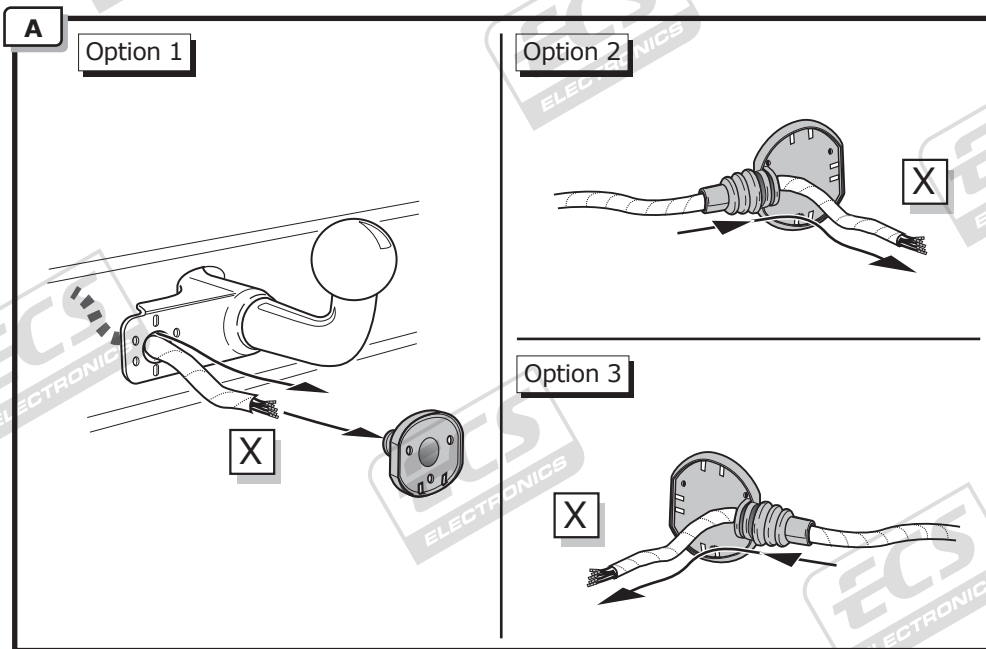


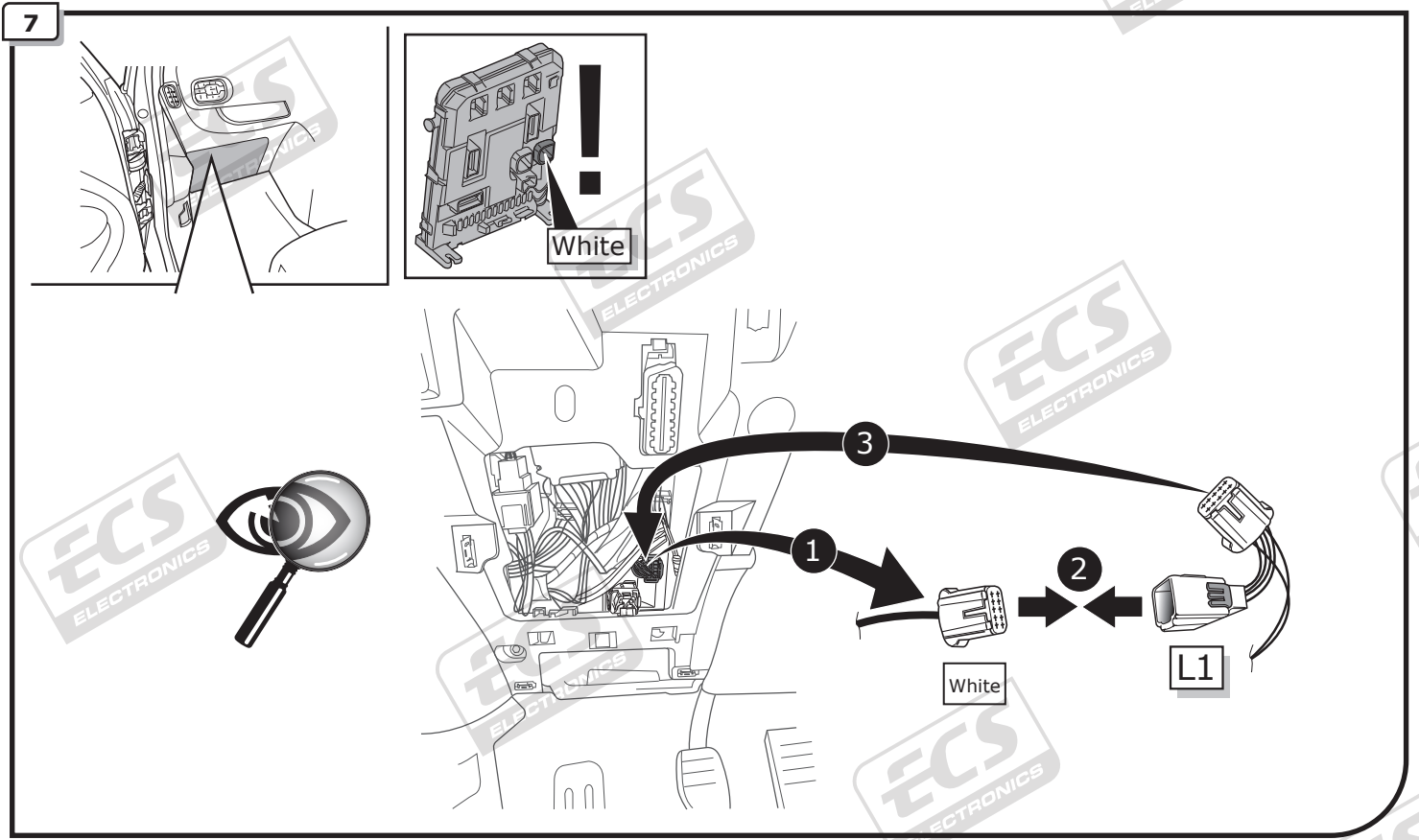
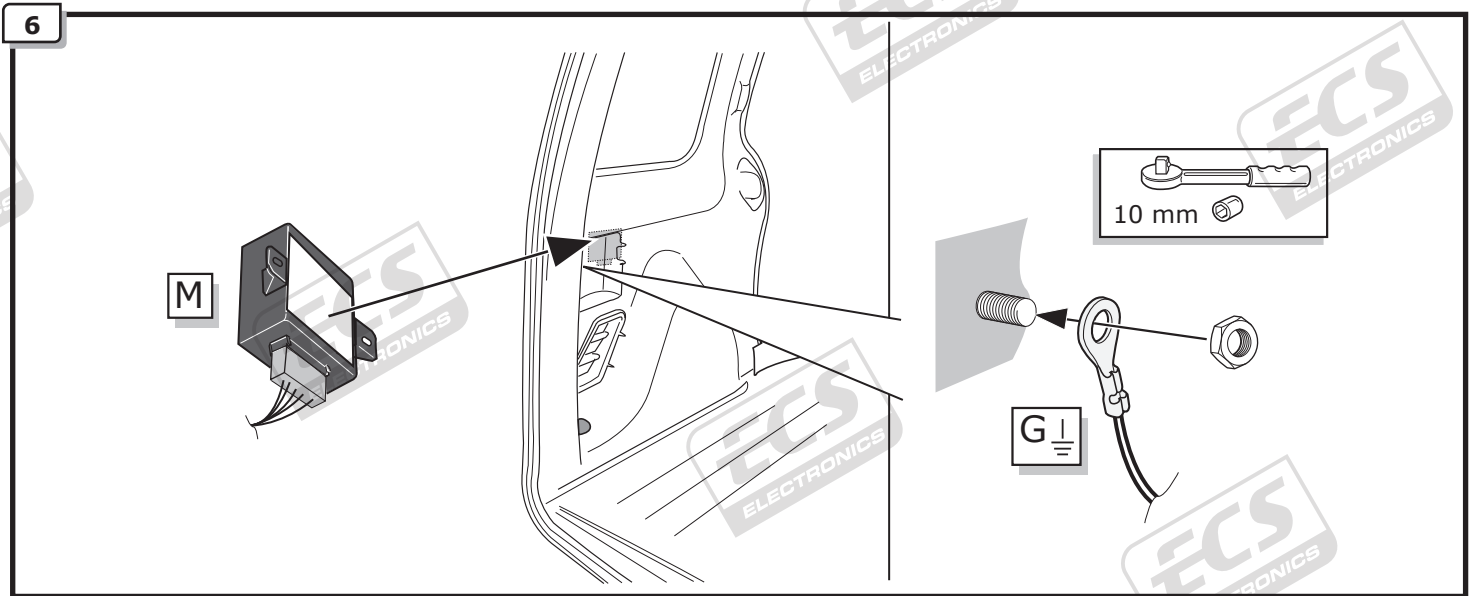
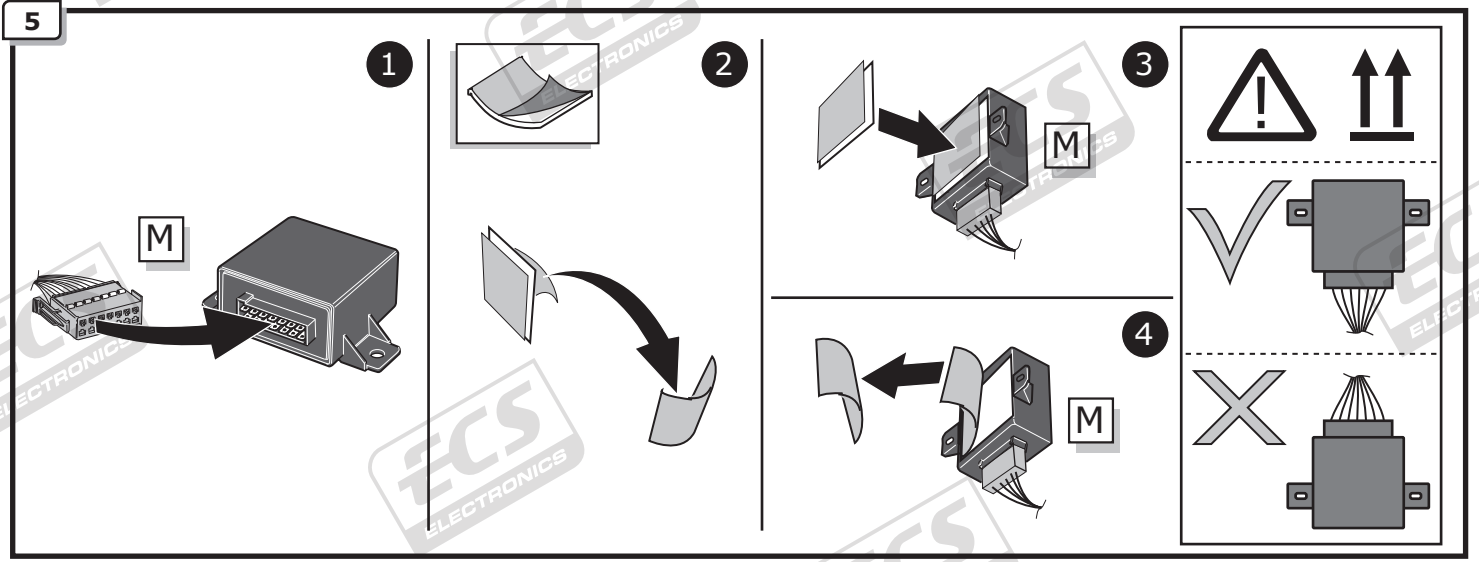
3



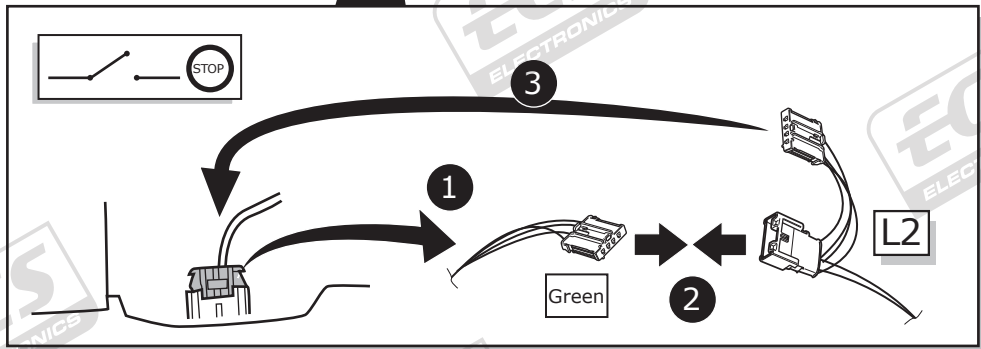
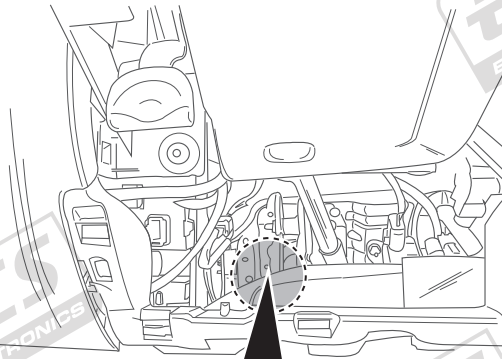
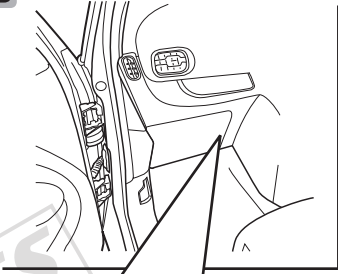
4



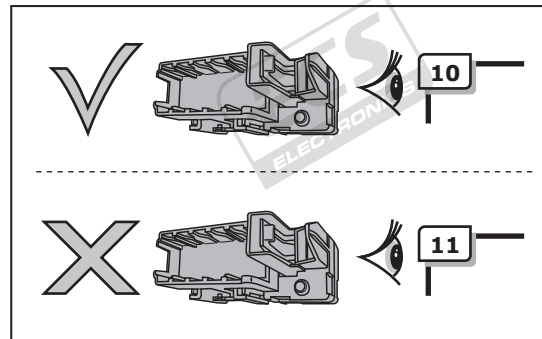
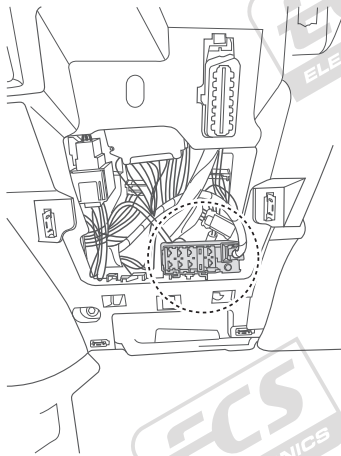
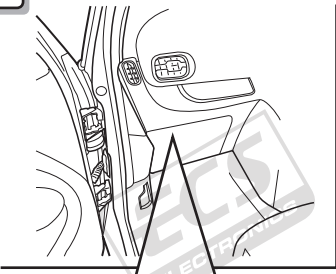


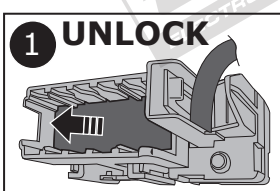
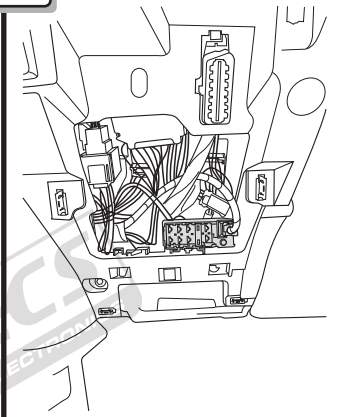


8

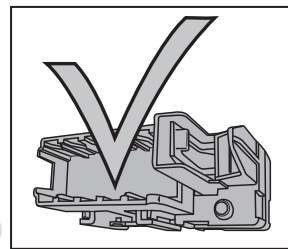
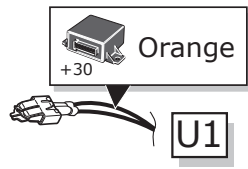
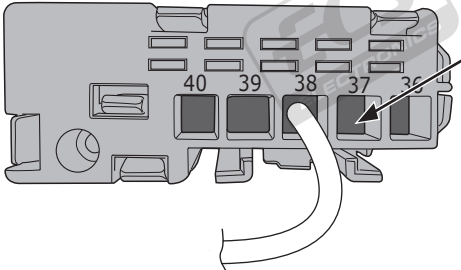


9





! Choose free position



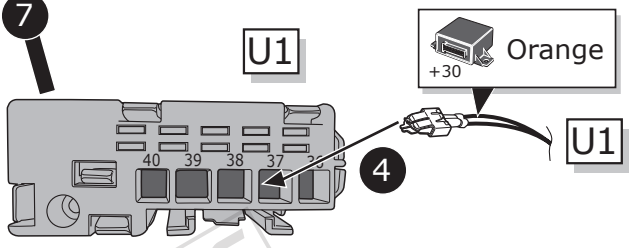
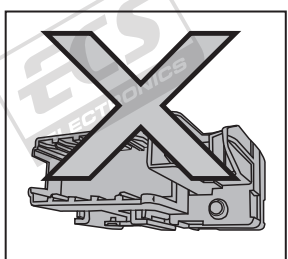
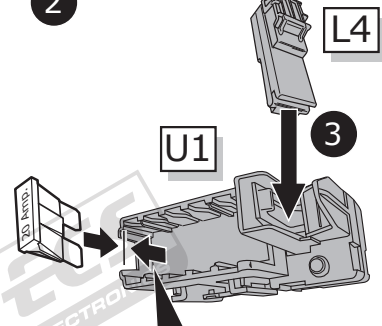
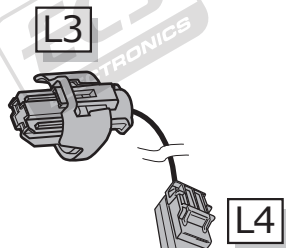
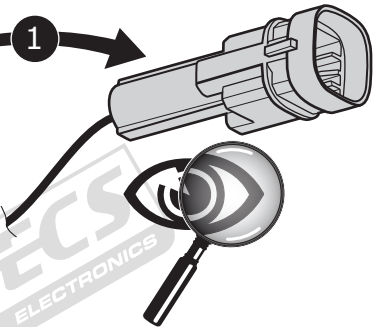
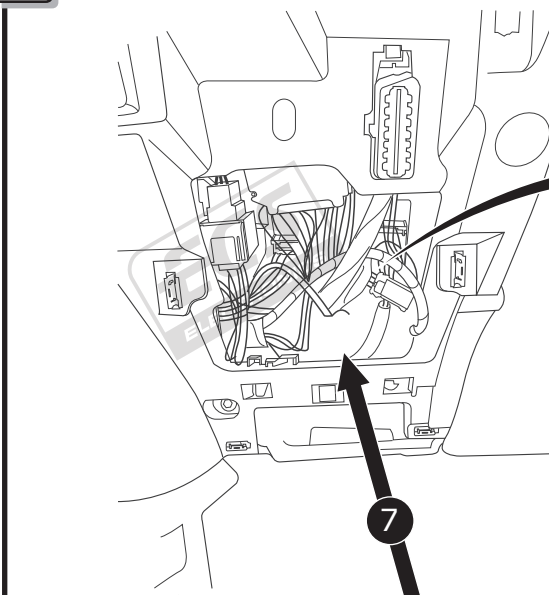
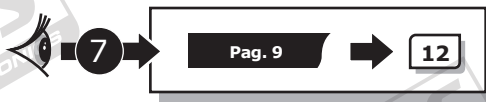
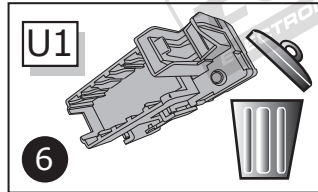
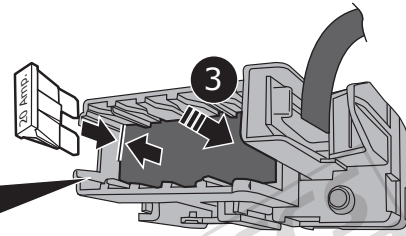
5

Position

User guide.

4

20 Amp.



6

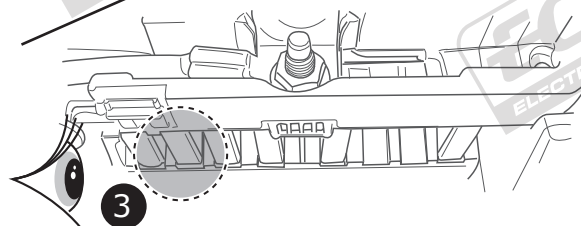
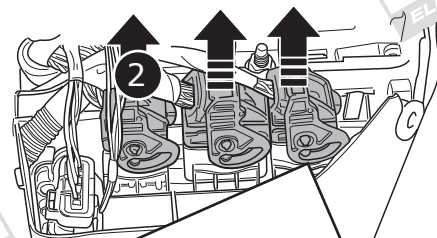
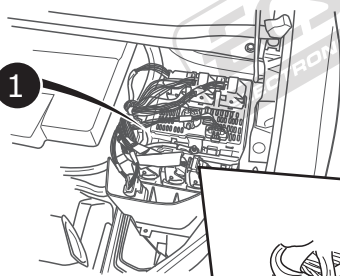
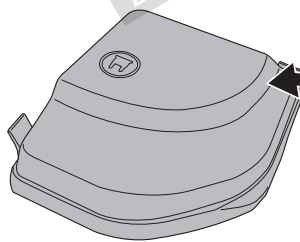
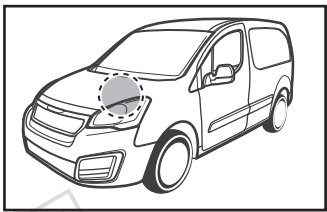
Position

User guide.

5

20 Amp.

12

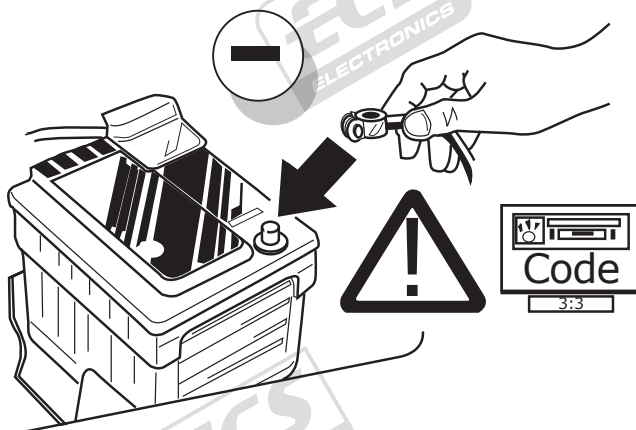


4

Pos. 2

Option 1	Option 2

13



14

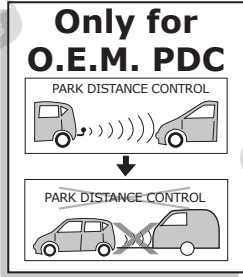


TEST ALL THE CIRCUITS WITH A TEST DEVICE WITH THE CORRECT POWER LOAD FOR EACH FUNCTION. A TEST DEVICE WITH LED'S CANNOT BE USED FOR THIS PURPOSE.

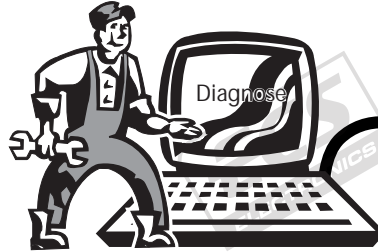
INFO

REINSTALL TRIM.

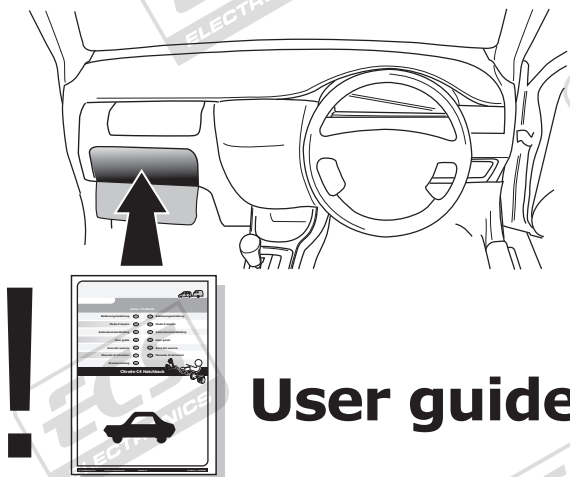
INFO



C2



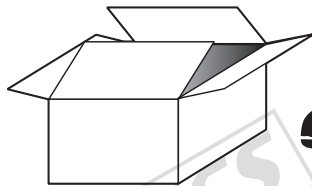
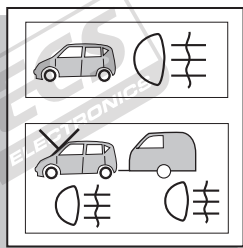
15



User guide

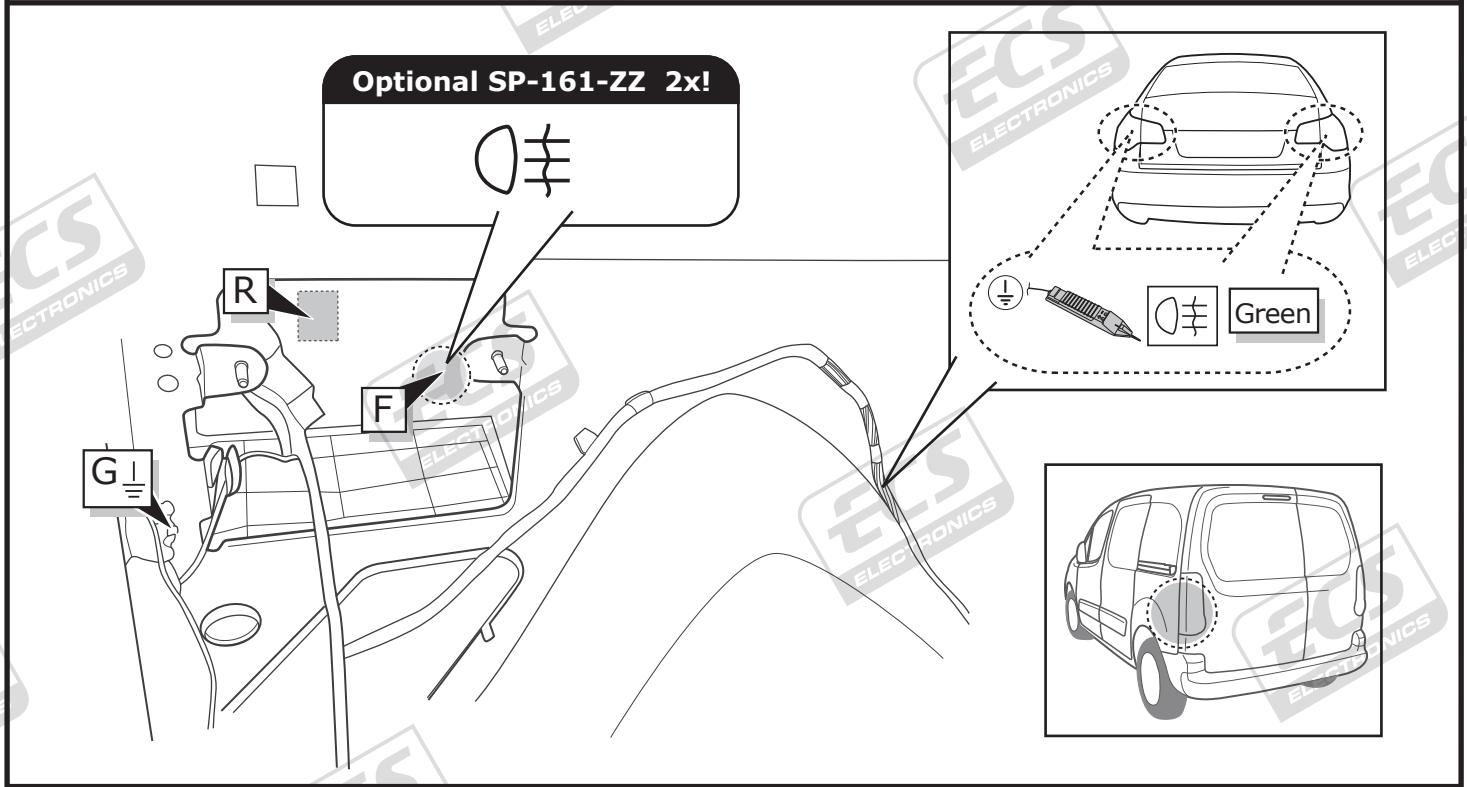


OPTION



Consult your supplier.

SP-161-ZZ

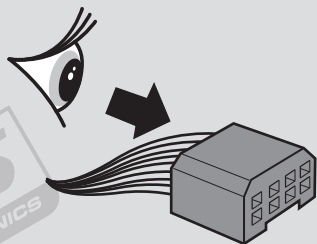


INFO

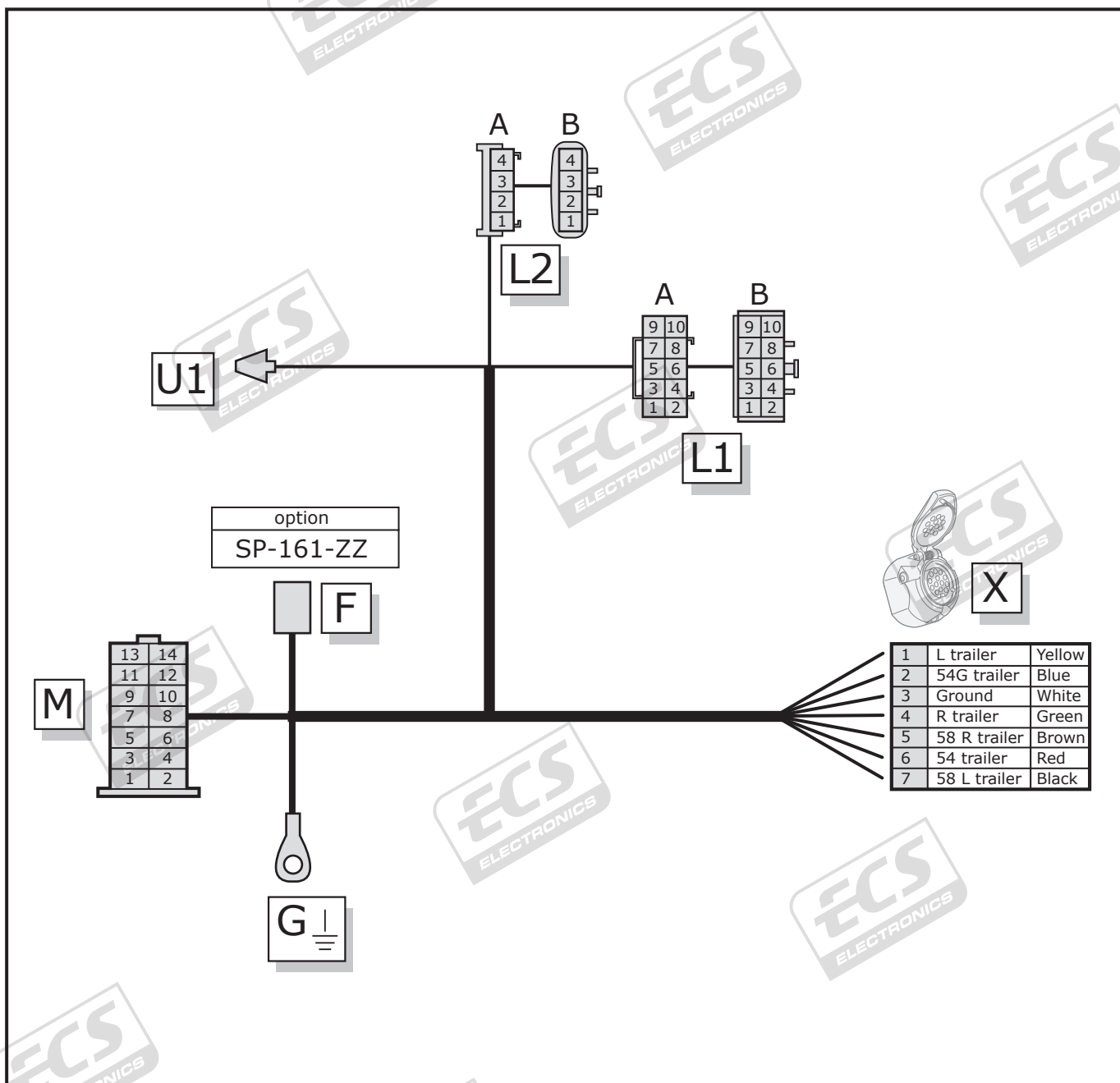
SOCKET CONNECTION

DIN/ISO 1724	↵	🚗	1-7	⇨			
	1/L	2	3/31	4/R	5/58-R	6/54	7/58-L
Pmax	21W	21W		21W	42W	3x21W	42W
Colour	Yellow	Blue	White	Green	Brown	Red	Black

INFO POWER SCHEDULE CT-056-B1U

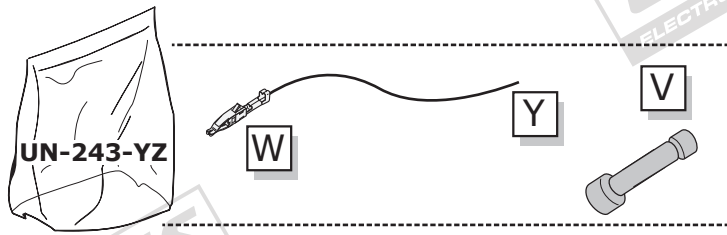


L	←	54	STOP
R	→	54G	⚡
58L	⚡	BU	⊕ _R
58R	⚡	Ground/31	⊖

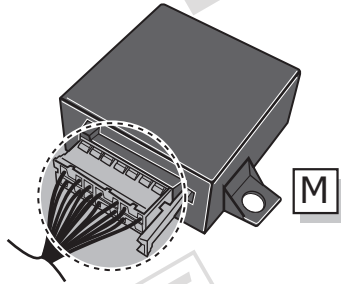


UN-243-YZ Reverse lamp pre-wire extension

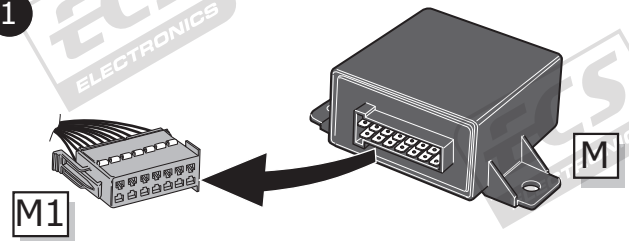
⚠ MAX = 21W



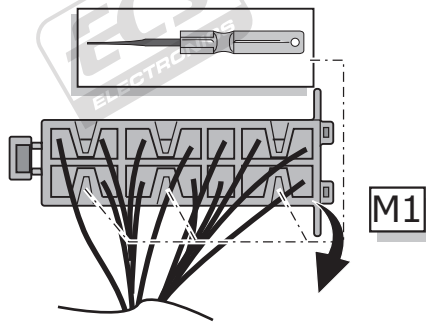
A



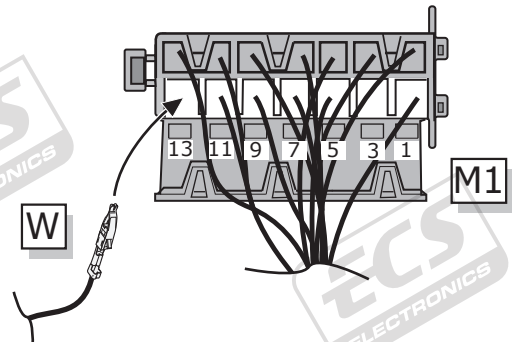
1



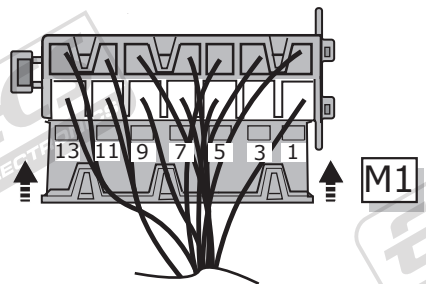
2



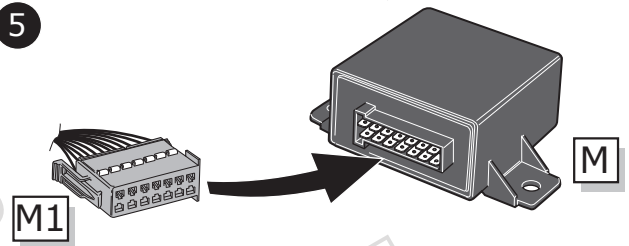
3



4



5



B

⚠ MAX = 21W

