

BIO SCULPTURE

HEALTHY | ETHICAL | PROFESSIONAL



evo

MINI-KIT MANUAL

PRODUCT KNOWLEDGE
STEP-BY-STEP INSTRUCTIONS
QUICK FACTS

WELCOME TO BIO SCULPTURE

Thank you for making an investment in Bio Sculpture - the original soak-off nail gel.

Our purpose is to provide premium quality products and professional training, empowering nail technicians to offer healthy and fashionable nail care systems, guided by an ethical business approach.

Bio Sculpture's international head office is situated in the heart of South Africa in the small town of Clocolan, playing an important role in the socio-economic environment, surrounded by the breath taking African landscape. The 3000sqm ultra-modern factory is an environmentally friendly building with regulated ventilations systems, boasts self-supportive water storage and optimizes natural lighting. The factory is ISO 22716 certified for Good Manufacturing Practices and is managed under ISO 9001 Quality Management Systems.

Bio Sculpture products are manufactured meeting, or exceeding, the standards with respect to safe ingredients, formulations and labelling as required in the European Union. In Canada, all Bio Sculpture products are registered with Health Canada through the Cosmetic Notification process.

Welcome to the **Bio Sculpture Family!** Since 1988, our community has grown to include nail technicians from 40 countries who have successfully grown their careers and businesses by using our premium nail care system designed to improve and maintain the Health of the Natural Nail.

Sincerely,

Erica Nieuwenhuis
CEO Bio Sculpture Canada Inc



INTRODUCTION

BIOGEL - is the original, professional, soak-off, easy wear nail gel system in a jar. With a 5-star Safety Rating boasting natural nail health, while beautifully enhancing and transforming any nail. A scientifically formulated pure gel range which varies from flexible to solid, BIOGEL is suitable for every nail type and is excellent for extending and strengthening nails. BIOGEL is durable, chip resistant, self-levelling, with a long-lasting gloss finish, cures in 30 seconds and removes in 10 to 15 minutes. Bio Sculpture Base Gel is an awardwinning universal base suitable for all nail types. Base Gel has been voted **#1 Nail Enhancement Product** in the Salon Readers Choice Awards for 6 years in a row (2015 to 2020)! With a range exceeding 160 colours, nail art and overlay possibilities are endless. New fashionable colours are launched seasonally, adding to the BIOGEL range with a matching nail polish range.

EVO is a revolutionary, professional LED gel polish in a bottle system that is easy to apply. Consisting of three pure gel base coats: Evo Oxygenating Base & Build, Evo FLEX Base and Evo CONTOUR Base & Build, each with a unique texture and purpose to suite every nail type. The bases have excellent self levelling properties for overlays, adding strength to the natural nail and to create effortlessly beautiful form sculptures. The bottle and brush system allow for fast application and quick removal within 10-15 min, while being a complete system on its own, EVO is compatible with BIOGEL. Evo has a wide selection of highly pigmented colour gels with excellent consistency and intense nail coverage that are all named after special ladies. Colour palettes are compiled by leading fashion experts, adding seasonal, new and trendy colours as well as everyday wear shades to the Evo family.

ETHOS natural nail care consists of a range of products by BIO SCULPTURE, designed to promote natural nail health. The unique property of the key natural ingredient in each individual treatment is discretely displayed on its bottle for easy recognition and application selection. ETHOS may be used at home, with or without colour as a nourishing salon treatment. ETHOS follows Bio Sculpture's ethical approach, containing no animal products and is not tested on animals. ETHOS **Vitamin Dose**, designed to nourish and rejuvenate the nail matrix, was voted **#1 Nail Treatment/Strengthener** in the 2020 Salon Readers Choice Awards.

GEMINI is Bio Sculpture's new Nourishing Nail Polish range containing plant extracts. It is fast drying, long lasting and will add strength to the natural nail.



ETHOS TREATMENTS

NAIL HEALTH IS VERY IMPORTANT TO BIO SCULPTURE. Therefore the system offers a range of in-salon pre-gel treatments as well as ongoing home care treatments.

WHICH ETHOS TREATMENT DO YOU NEED?

VITAMIN DOSE

Rejuvenates all nail types



ALMOND OIL

Re-hydrates and conditions dry cuticles & surrounding skin



SPECIAL PREP SOLUTION

Increases product adhesion & longevity



KIWI SCRUB

Exfoliates and rehydrates dry nails & cuticles



CUTICLE REMOVER

Softens and removes stubborn overgrown cuticles



LAVENDER BASE

Strengthens and enriches weak & damaged nails



VOLCANIC BASE

Hardens soft & thin nails



SEAWEED CALCIUM BASE

Provides suppleness to hard, dry & brittle nails



OXYCOAT

Nourishes naturally healthy nails



MIRROR TOP COAT

A smooth & silky nail polish finish



EVO PRODUCT KNOWLEDGE



EVO BASES

FLEX BASE	OXYGENATING BASE	CONTOUR BASE
Very flexible base gel with exceptional bonding to very thin, soft, weak nails.	Healthy base & builder gel for normal to firm nails. Suitable for minor shape corrections.	Long wearing base gel for medium to hard nails. Suitable for minor shape corrections.

NOTE: All Evo Bases should be cured uninterrupted for **60 sec.** For additional strength and building it is recommended to use **BioGel Medium** or **Hard Gel**.

EVO COLOURS

Applied in two layers on a pre-selected base layer. Available in over 110 trendy colours in a variety of finishes.

EVO TOP COATS

GLOSS	SUEDE MATTE	CHROME CATALYST
Provides a long lasting glossy finish.	Provides a matte, velvety finish.	Non-wipe top coat suitable for nail art.

EVO NATURAL WHITE

Sculptures to lengthen the free edge

EVO APPLICATION

TERMINOLOGY

GRIPPING LAYER	A thin layer applied with firm pressure
SMOOTH LAYER	A thicker layer applied with less brush pressure to leave a smooth finish
REINFORCED LAYER	Excess product from the smooth layer applied to the free edge, drawn upwards to support the stress area.
UPPER ARCH	Precise placement of gel to build the apex and strong well shaped upper arch

EVO can be applied as a 4-layer application on well-arched short nails, or as a 5-layer application of long or scooped nails to give extra support and good shape.

STEPS

Before you start:

1. Evo Colours need to be shaken and mixed well. Each Evo colour bottle has a metal ball to assist with mixing. Different colours have different viscosities, therefore they have different application brushes.
2. Evo Bases have a low viscosity which adds to its light sensitivity. Keep the bottle away from UV exposure like natural light, halogen light and UV rays.
4. Evo Bases cures for 60 seconds in the **Bio Sculpture SPECTRA** Multi-LED Curing Unit. Evo Colours and Top Coats cure for 30 sec. FL-UV curing is not recommended with the Evo system.

Step-by-step: Colour Application:

1. Prepare the nail by pushing back the cuticles. Shorten and shape the nail. If required, use a 320 grit Yellow Buffing Block to remove oil from the nail surface. Clean the nail with a lint-free nail wipe moistened with **Bio Sculpture Nail Cleanse**. Analyse the client's nail type and condition and apply the suitable **Ethos Natural Nail Treatment**.
2. Apply a flat **Base Layer** using the gripping-and-smoothing method, taking care to not touch the cuticles and sidewalls. Cure, cleanse and refine.
3. Apply the **first Evo Colour** layer thinly and neatly, very close to the cuticle outline and down the side walls in overlapping strokes, covering the entire nail. Cure.
4. Apply the **second Evo Colour layer**. To ensure an even application use less pressure. Cure.
5. **On short nails:** Apply Gloss Gel. Cure.
On longer or weak nails, apply the strengthening layer or build an upper arch using a suitable Evo Treatment Gel for minor corrections. For extreme lengths and additional strength and support apply a strengthening layer using BioGel Medium or Hard Gel. Cure. Refine the nail surface by dry-gel shaping. Remove dust with Nail Cleanse. Apply Gloss Gel. Cure.
6. Wash hands, apply **Ethos Almond Oil**.

SUMMARY

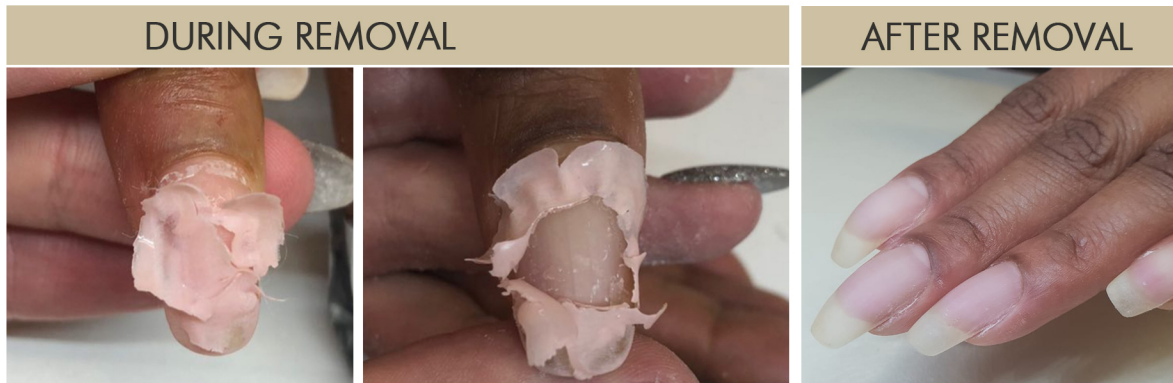
4-LAYER APPLICATION	5-LAYER APPLICATION
<ol style="list-style-type: none">1. Prepare the nail.2. Flat base layer application. Cure, cleanse, refine.3. 1st colour layer. Cure.4. 2nd colour layer. Cure.5. Apply Evo Top Coat, cure, wipe.6. Wash hands, apply Almond Oil.	<ol style="list-style-type: none">1. Prepare the nail.2. Flat base layer application. Cure.3. Apply upper arch with higher apex.4. 1st colour layer. Cure.5. 2nd colour layer. Cure.6. Apply Evo Top Coat, cure, wipe.7. Wash hands, apply Almond Oil.

EVO REMOVAL

EVO can be gently removed from the nail in 10-15 minutes following the instructions below. The removal time will depend on the number of layers applied.

STEPS

1. Remove traces of Nail Polish or Top Coat using Polish Remover.
2. Shorten tips and sculptures to the length of the natural nails using an Edge Cutter.
3. Break the seal and remove the top layers of Top Coat using a 100/180 grit Zebra or Black file.
4. Remove dust using a Nail Brush.
5. Apply ETHOS ALMOND OIL covering the cuticles and buffed gel surface.
6. Cut one inch pieces of Bio Wipe Roll. Use Tweezers to place Bio Wipe saturated with Bio Sculpture Gel Remover on each nail. Hold in place with foil or Soak-off Clip.
7. Keep nails warm for approximately 10 minutes to accelerate the removal process.
8. Carefully remove the gel using an orangewood stick. Work from the free edge towards the cuticle area. Do not force. If all the gel has not been released from the nail, re-wrap and wait a few minutes.
9. Once the gel is completely removed, apply Ethos Cuticle Remover or Kiwi Scrub and proceed with cuticle work before moving onto the next finger.
10. Wash hands with Hand Wash, warm water and a nail brush, proceed with gel overlay.



MAINTENANCE & HYGIENE:

1. Take special care to keep the brushes away from any kind of UV exposure.
2. Store the bottles in an upright position away from direct sunlight. Never uses cotton wipes to clean the rim of the bottles. Wipe the outside of the bottle with Bio Sculpture Nail Cleanse.
3. Remember to clean the curing unit after each use. We recommend using PreEMPT RTU Wipes.
4. Dispose of all nail files, buffers, orangewood sticks after each use.
5. Disinfect stainless steel tools by soaking in PreEMPT CS-20 following manufacturer's instructions.
6. Disinfect work surfaces after each client using PreEMPT RTU following manufacturer's instructions.

BIO SCULPTURE

HEALTHY | ETHICAL | PROFESSIONAL



HEALTHY NAIL
CARE



ETHICAL



FOR
PROFESSIONALS



NON TOXIC



CRUELTY FREE



VEGAN



5 STAR SAFETY
RATED



AWARD
WINNING



TRAINING
BASED SYSTEM

Bio Sculpture products and training are exclusively available through Bio Sculpture Canada.

BIOSCULPTURENAILS.COM | 1-877-424-6435

Find us on social media, we would love to get to know you!

IG: @EVOGELCANADA

FB: @BIO SCULPTURE GEL CANADA