

PRODUCT REGISTRATION FOR
SAFETY ALERT OR RECALL ONLY

We will use the information provided on this card to contact you only if there is a safety alert or recall for this product. We will not sell, rent, or share your personal information. To register your product, please complete and mail the bottom part of this card, or visit our online registration at: www.vingli.com.

Please visit our online registration
at: www.vingli.com
No need to mail

DERICK LIMITED
ADD: FLAT/RM 01 11/F HANG SENG CASTLE
PEAK RD.BLDG 339 CHEUNG SHA WAN,KL
Hong Kong 999077
USA Tel: (732)348-8096

Manufacturer's Contact Information

DERICK LIMITED
ADD: FLAT/RM 01 11/F HANG SENG CASTLE PEAK
RD.BLDG 339 CHEUNG SHA WAN,KL Hong Kong
999077
USA Tel: (732)348-8096

Model Name: MG

Model Number: G666-G

Manufacture Date: 2022-05

KEEP THIS TOP PART FOR YOUR RECORDS.
FILL OUT AND RETURN BOTTOM PART
THROUGH MAILBOX.
support@vingli.com

Name

Mailing Address City

State

Zip Code

Telephone Number

____-____-____

E-mail address

Model Name: MG

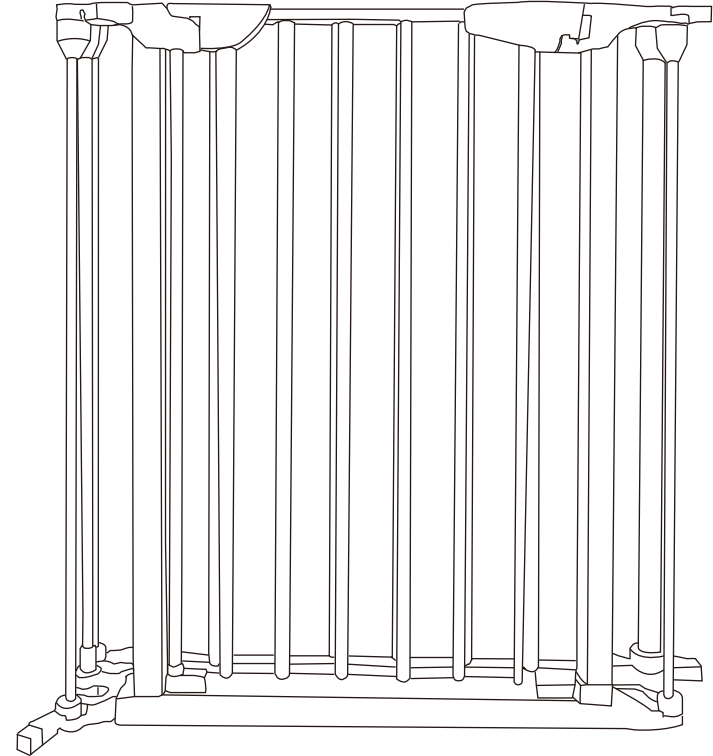
Model Number: G666-G

Manufacture Date: 2022-05



Safety Gate

INSTALLATION MANUAL



Thank you for your purchase.

If you have difficulty with assembly or find a part is missing or damaged, please don't hesitate to contact us for solution.

Vingli Customer Service team will work hard to put a smile back on your face.

Here is how we can connect:

Email: support@vingli.com

Official Website: <https://vingli.com/>

Before Using Product

Read and follow all instructions carefully to ensure that your gate and extensions are properly installed. Improper installation could result in the gate becoming unstable or dislodged from the doorway. Always make sure the extension is securely attached to the gate before using. The safety of your child is your responsibility. Please keep these instructions for your reference.

⚠ IMPORTANT

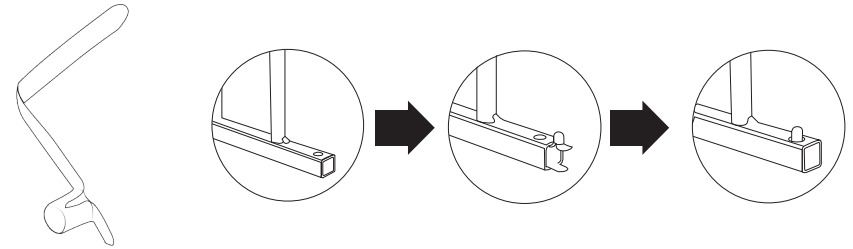
- THE FOUR MOUNTING BRACKETS MUST BE USED IN SECURING THE GATE TO THE WALL. THESE BRACKETS PREVENT THE GATE FROM DISLODGING FROM ITS OPENING AND BECOMING UNSTABLE.
- IF HARDWARE MOUNTING TO A SURFACE SUCH AS DRYWALL OR WOOD, PLEASE CONSULT WITH A PROFESSIONAL ABOUT INSTALLATION. TIPS: HARDWARE MOUNTING NOT SUITABLE FOR HOLLOW WALL, OR AERATED CONCRETE BLOCK WALL.

⚠ WARNING

- TO PREVENT SERIOUS INJURY OR DEATH, SECURELY INSTALL GATE AND USE ACCORDING TO MANUFACTURER' S INSTRUCTIONS.
- NEVER USE WITH A CHILD ABLE TO CLIMB OVER GATE OR DISLodge/OPEN THE GATE.
- THIS PRODUCT WILL NOT NECESSARILY PREVENT ALL ACCIDENTS.
- KEEP AT LEAST 2 FEET FROM OPEN FLAME OR HEAT SOURCE.
- NEVER LEAVE CHILD UNATTENDED.
- USE ONLY WITH THE LOCKING/LATCHING MECHANISM SECURELY ENGAGED AND ON SIDE AWAY FROM CHILD.
- THIS PRODUCT INTENDED FOR USE WITH CHILDREN FROM 6 MONTHS UP TO 24 MONTHS OF AGE.
- HARDWARE IS INCLUDED FOR USE IN SOLID MATERIAL ONLY, SUCH AS WOOD OR METAL.

2. What should I do when the pre-installed V- shaped shrapnel (F) was missing:

Pls find the 4 pcs spare parts which come with the package and install by yourselves as below:



3. How to do when the door bottom plastic connector(G) broken:

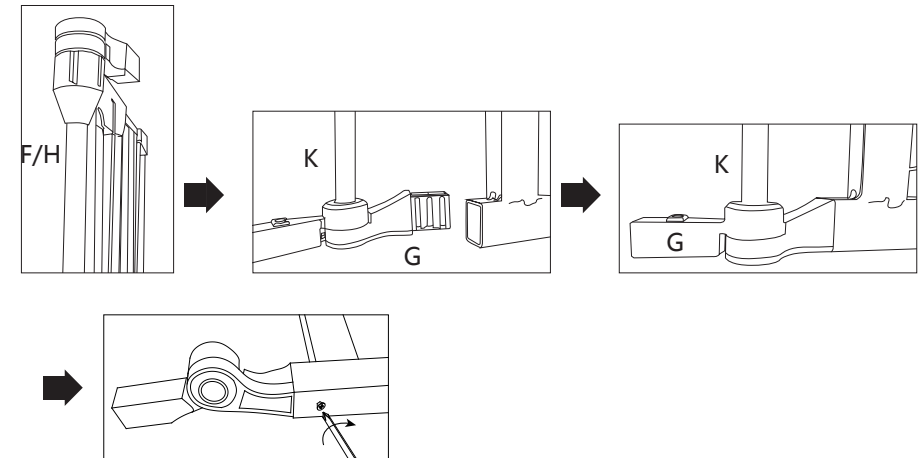
Step1: Use a needle nose pliers to help take off the balance broken part inner the metal bar

Step2: Position the rod K back on the Upper connector (F or H)

Step3: Position the K on G

Step4: Press D and make it fully fix with door panel

Step5: Put the screw in



4. Where could I order an extension panel?

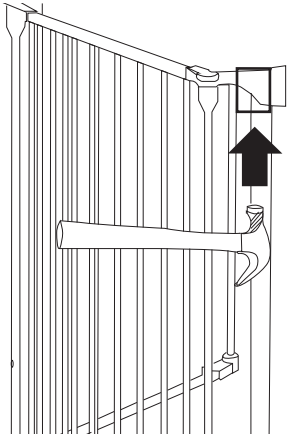
Pls feel free to contact us for the link or find the different size listed in our product listing.

Our Email address: support@vingli.com

FAQ:

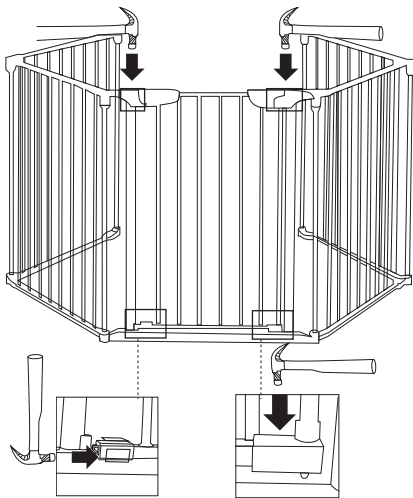
1. When I received a replacement from the Vingli Customer Service, how to replace the plastic joints on the door part?

Step1: Take off the balance defective plastic part off the door panel by the help of a hammer (not included)



Step2: Put on the new replacement

Step3: Use a hammer to help the replacement more fix



Components



Name:	3 - Panel	
Contains:		
Door Panel		x 1
Side Panel		x 2
Upper Plastic Joints(A)		x 2
Lower Plastic Joints(B)		x 2
Metal Rod(K)		x 4
Wall Mount Bracket(C-1)		x 4
Mounting Screws(C-2)		x 8
Plastic Expansion Tubes (C-3)		x 8



Name:	5 - Panel	
Contains:		
Door Panel		x 1
Side Panel		x 4
Upper Plastic Joints(A)		x 4
Lower Plastic Joints(B)		x 4
Metal Rod(K)		x 6
Wall Mount Bracket(C-1)		x 4
Mounting Screws(C-2)		x 8
Plastic Expansion Tubes (C-3)		x 8

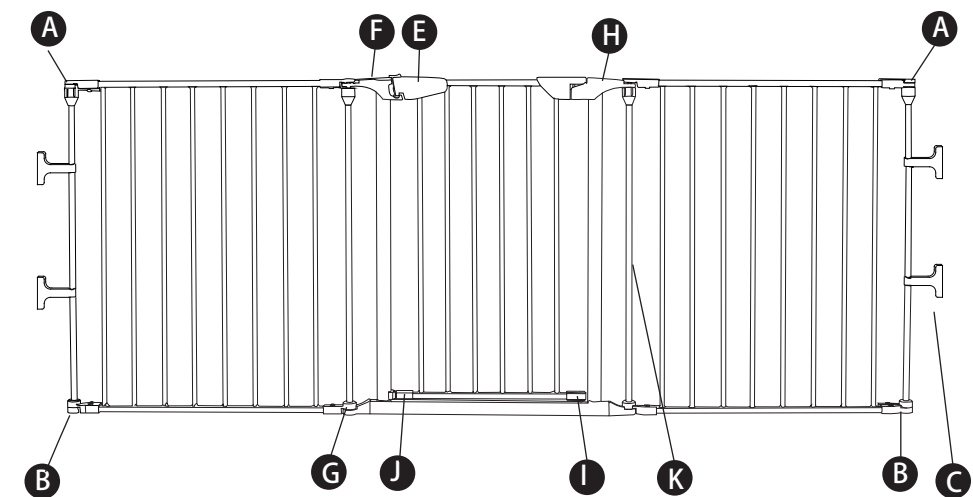


Name:	8 - Panel	
Contains:		
Door Panel		x 1
Side Panel		x 7
Upper Plastic Joints(A)		x 6
Lower Plastic Joints(B)		x 6
Metal Rod(K)		x 8
Wall Mount Bracket(C-1)		x 4
Mounting Screws(C-2)		x 8
Plastic Expansion Tubes(C-3)		x 8

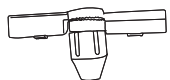
Tips: Every package will come with extra 1 PC Door Bottom Plastic Connector(G) and 4 PCS V-shaped Sharpnel (D) as spare parts

Replacement Parts Available

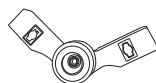
In the event of any damage or breakage, the following replacement parts are available by contacting Vingli Customer Service



A Upper Plastic Joints



B Lower Plastic Joints



C-1 Wall Mount Bracket



C-2 Mounting Screws



C-3 Plastic Expansion Tubes



C-4 Plastic Expansion Tubes



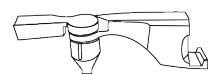
D V-shaped Sharpnel



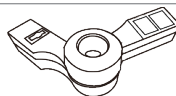
E Door Latch



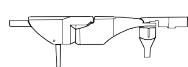
F Door Handle Bottom Connector



G Door Bottom Plastic Connector (bottom left & right)



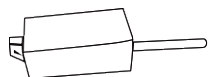
H Door Upper Right Plastic Joints



I Door Bottom Right Hinge



J Bottom Door Latch



K Metal Rod

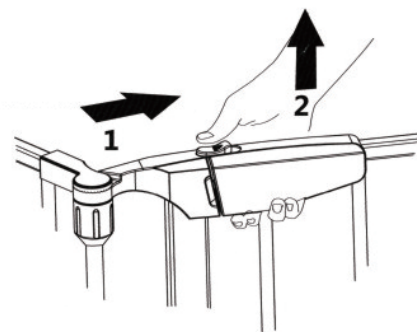


Using

To open the door:

1. Push the door release button backward.
2. lift the door panel upward
3. Swing door open and release button.

Tips: If you open the door past 90 degrees, it will stay open.



To fold your play

1. Loosen all of the locking knobs so the whole gate can move freely and becomes flexible at the joints.
2. if it is in a play yard shape, remove one of the upper joints A from the play yard and remove one vertical rod K . Now you will be able to pull the two plastic joints and the top and bottom of the play yard apart.
3. Fold and put away.

Care and Maintenance

Periodically check the gate for signs of damage, wear or missing components. Do not use if any part is missing, worn or damaged. Check the gate regularly to ensure all the hardware and mountings are tightened. Do not use abrasive cleaners or bleach. Clean by sponging with warm water and a mild detergent.

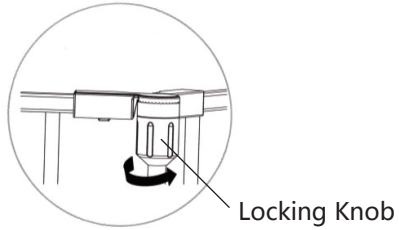
In the event of any damage or breakage, you can contact Vingli Customer Service for replacement parts.

Install Wall Mount Brackets to Wall

1. Adjust the metal gate into the shape you want :

A . Bent to an angle: Loose the knob first, and then bent the panel to the angle you want, fixed the angel by tighten the locking Knob.

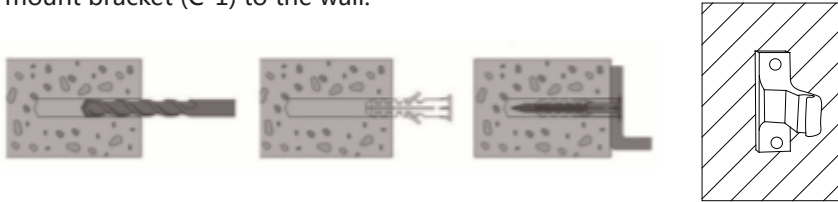
B. Secure gate panels: Turn the knob counter clockwise until they are hand tight.



Locking Knob

2. Measure and mark out the screw holes on the wall, and then drill holes on the wall.

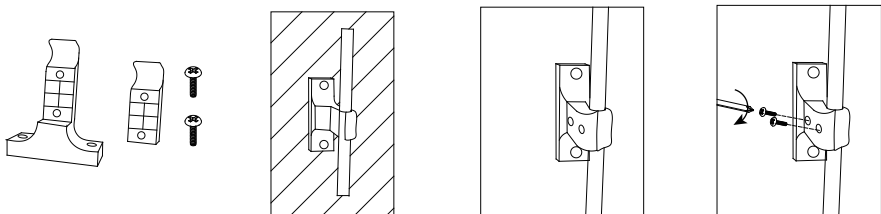
3. Insert the plastic expansion tubes (C-3) into the holes, then assemble the wall mount bracket (C-1) to the wall.



Tips: Drywall or wood, please consult with a professional about installation.

Tips: hardware mounting not suitable for hollow wall, or aerated concrete block wall

4. Attach the Metal Rod (K) to The Wall Mount Bracket (C-1) , Use cross-head screwdriver (not included) to unscrew the screw on the side of the wall mount bracket (C-1), detach the plastic cover, and attach it to a metal rod (K), cover the plastic cover and tighten the screw again.



ASSEMBLY PROCESS

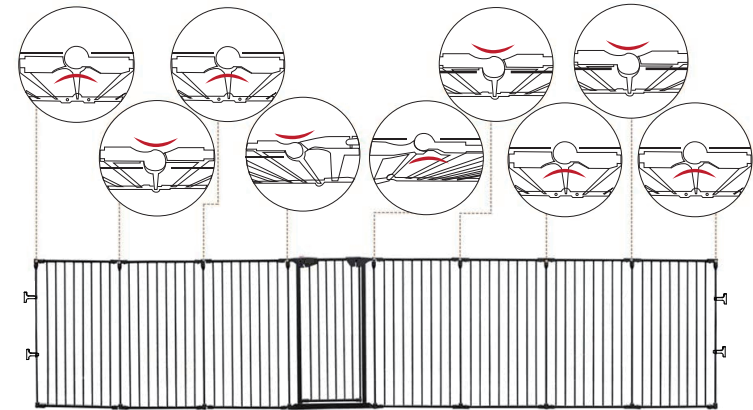
Step 1. Distinguish Direction

For connectors on the door panel were pre-installed, so let's start from the door panel.

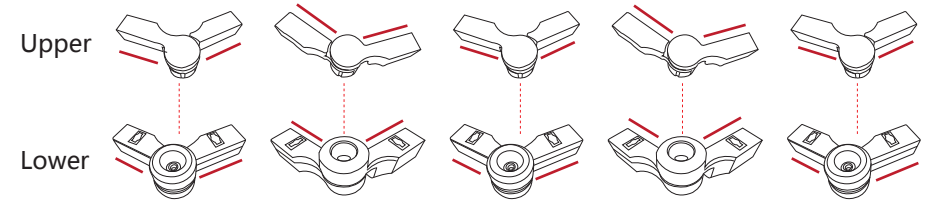
Distinguish each direction of the 4 corner connectors on the door panel. And then follow below model to connect side panels with joints :

You can distinguish by looking the towards of connector's curve or straight sideline

When the fence stand, in each panel, the two upper plastic joint A (or bottom plastic joint B) in horizon should toward to opposite direction as below :



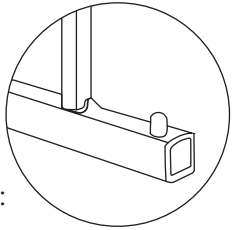
And each upper joint A should toward to same direction with the vertical bottom one B :



Step 2. Connecting Side Panels

Checking before start:

There are pre-installed V-shaped shrapnel(D) in 4 corners of each panel, and a visible small metal button outside the hole:

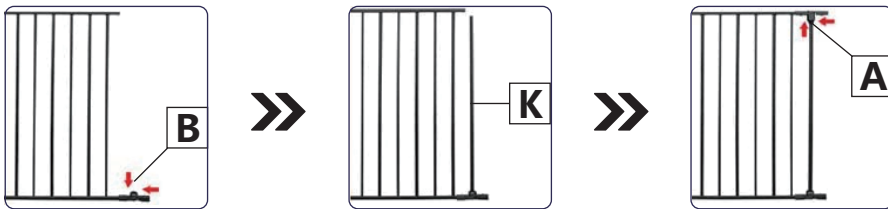


Metall Ball :

(Tips: if that pre-installed V- shaped shrapnel (D) was missing, you can use the 4 pcs spare parts come with the package and install by referring to FAQ at the end of instruction)

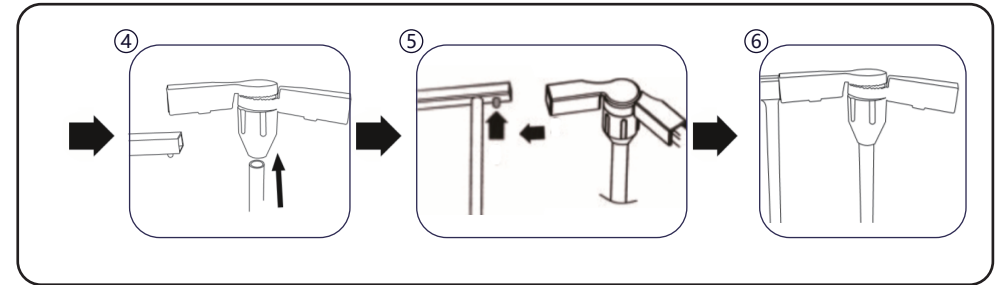
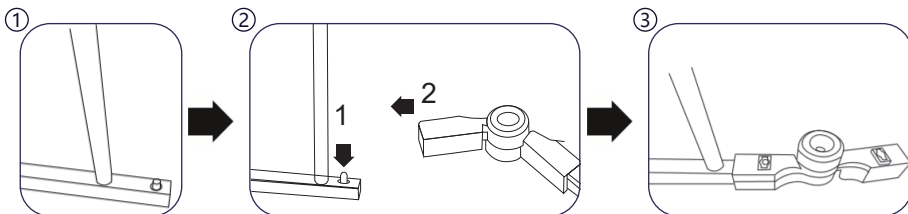
General Process:

1. Install the lower plastic joints B on the bottom corner of panel;
2. Position the metal rod K to the B;
3. Install the upper plastic joints A on the upper end of K;
4. Connect A to the upper corner of panel.



Method for install upper & bottom plastic joints:

Press metal button (outer part of V-shaped shrapnel D) and insert into plastic joints. You'll hear "Click" when you install them in place.



DISASSEMBLY PROCESS

Use an Allen Key (not included) to press down the small metal button and then separate the plastic joint.

Tips: Take off the upper joint first, and then take off the bottom joint

