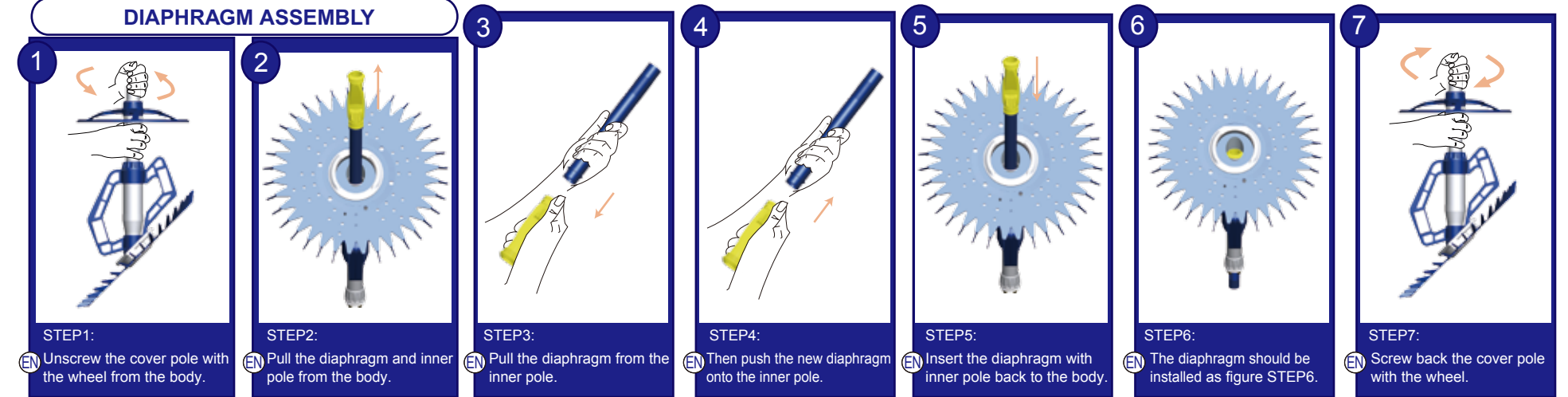
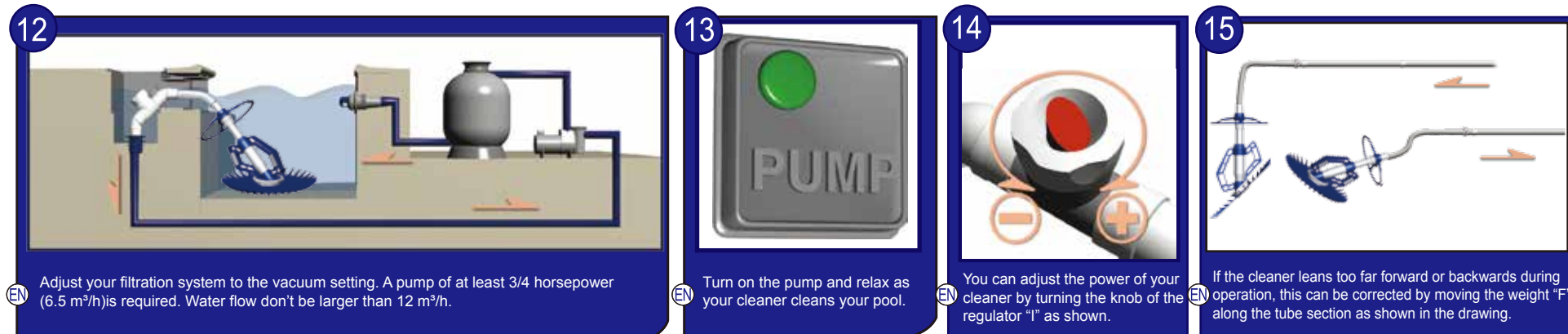
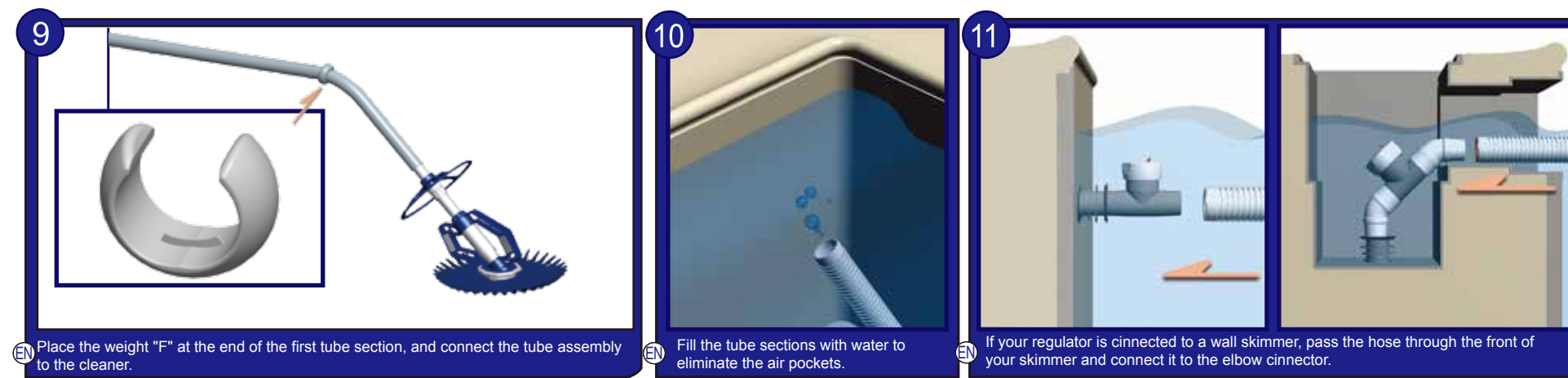
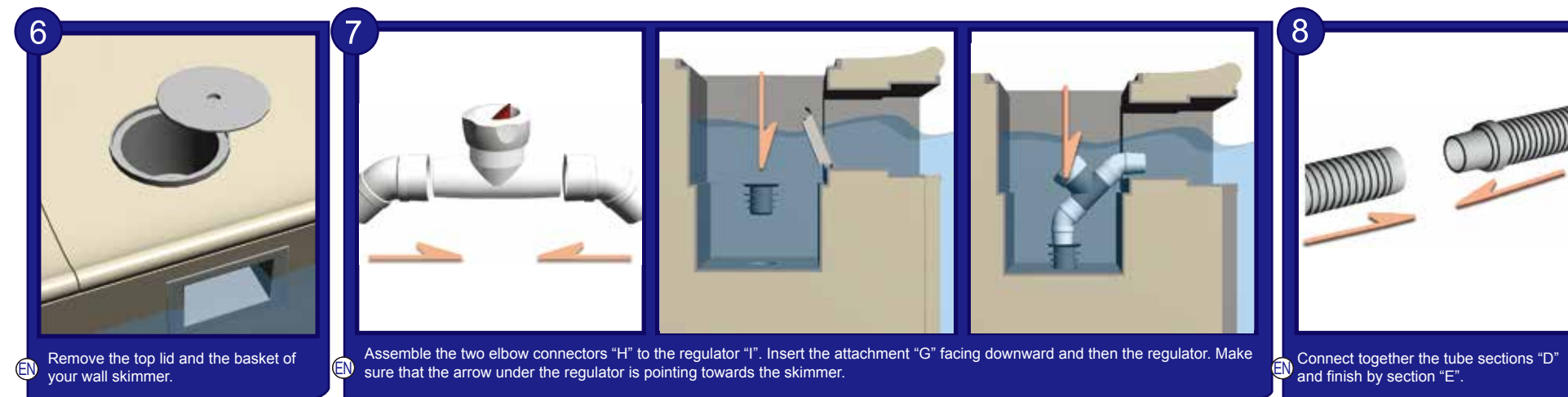
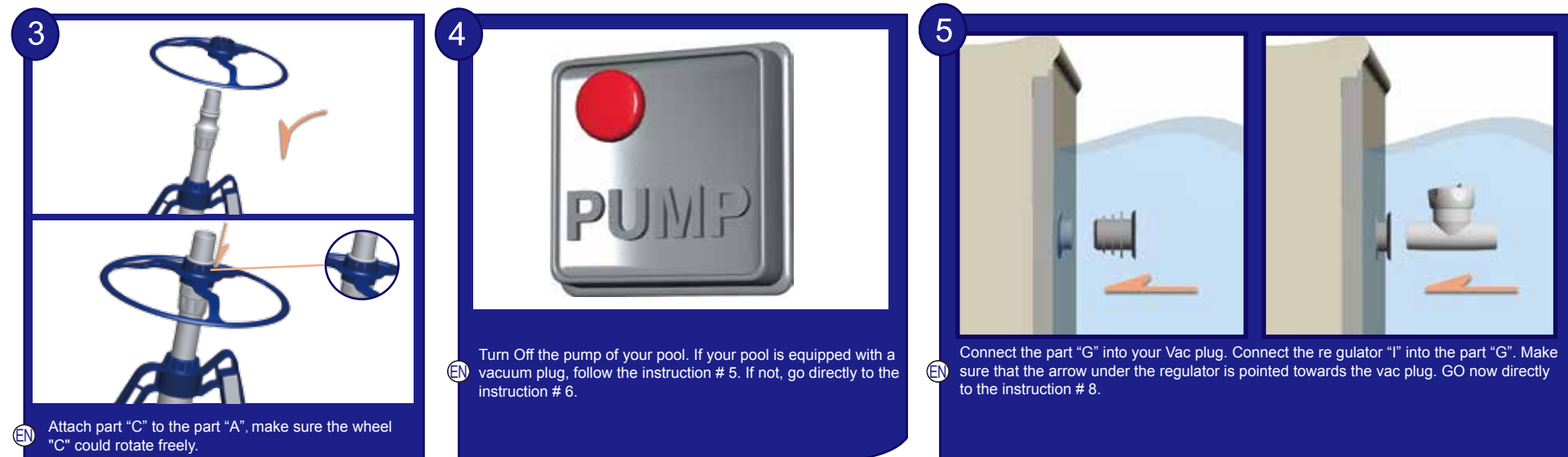
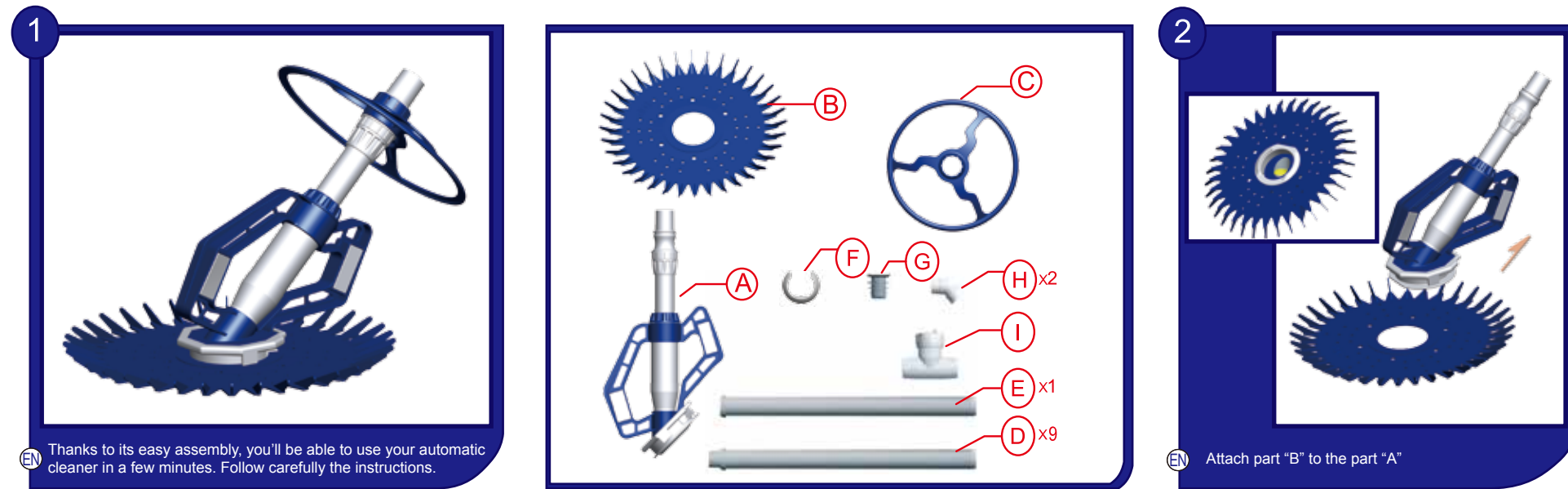


SIZE:275*360MM



TROUBLE SHOOTING

Problem: Cleaner is sluggish or has stopped operating.
Solution:
 • Check if the pump is ON and / or primed.
 • Check Cleaner head for blockages.
 • Clean and empty pump basket and empty skimmer/weir basket.
 • Ensure the filtration system is thoroughly cleaned. Clean sand/cartridge filters on your pool pump as per manufacturers specifications.
 • Inspect the regulator valve and flush away any debris build-up.
 • Check the Mat for wear.
 • Make sure the curved tips of the Mat are facing upwards.
 • Ensure that the skimmer/weir vacuum lid is fitted correctly and check for cracks.
 • Check the hose for blockage.
 • Check the hose for leaks by lifting each section above water while pump is running.
 • Consult a pool shop in your area.
Problem: Cleaner gets stuck on steps.
Solution:
 • Adjust the return jets toward the problem area to guide the cleaner away from the steps.
 • Verify proper hose length.
 • Ensure cleaner sits flush with the pool floor. Adjust the position of hose weight if necessary. This should be done at the deepest part of the pool.
 • Increase or decrease the flow to your cleaner via the regulator.
 • Check the Mat for wear.
Problem: Cleaner travels in a repetitive pattern.
Solution:
 • Adjust return jets downwards.
 • Verify proper hose length.
 • Ensure cleaner sits flush with the pool floor. Adjust the position of hose weight if necessary.
 • This should be done at the deepest part of the pool.
 • Remove or add one hose section.
 • Inspect the Regulator Valve and flush away any debris build-up.
 • Check that the hose sections are straight; if not, lay hose in a straight line in the sun to relax the memory.
 • Twist each hose section a half-turn at each connection point.
 • Ensure the wheel at the top of the Cleaner head is rotating freely.

Problem: Cleaner climbs out of pool and draws in air.
Solution:
 • Ensure there is a valve installed in the skimmer/weir.
 • Inspect the Regulator Valve and flush away any debris build-up.
 • Verify proper hose length.
 • Ensure cleaner sits flush with the pool floor. Adjust the position of hose weight if necessary. This should be done at the deepest part of the pool.
Problem: Cleaner hose is tangling.
Solution:
 • Utilize return jets to move cleaner.
 • Adjust hose weight.
 • Try decreasing the flow to your cleaner via the regulator. Less suction will allow the cleaner to move more freely.
Problem: Cleaner leaves patches.
Solution:
 • Ensure the wheel on top of the Cleaner body is rotating freely and is screwed on securely.
 • Adjust return jets downwards.
 • Verify proper hose length.
 • Ensure cleaner sits flush with the pool floor. Adjust the position of hose weight if necessary. This should be done at the deepest part of the pool.
 • Check that the hose sections are straight; if not, lay hose in a straight line in the sun to relax the memory.

Problem: Cleaner sticks on walls and floors.
Solution:
 • Ensure there is a valve installed in the skimmer/weir.
 • Inspect the Regulator Valve and flush away any debris build-up.
 • Check the Mat for wear.
 • Try increasing or decreasing the flow to your cleaner via the regulator.
Problem: Cleaner not sitting flat on bottom.
Solution:
 • Ensure there is a valve installed in the skimmer/weir.
 • Inspect the Regulator Valve and flush away any debris build-up.
 • Ensure the wheel on top of the Cleaner body is rotating freely and is screwed on securely.
 • Adjust return jets downwards.
 • Verify proper hose length.
 • Ensure cleaner sits flush with the pool floor. Adjust the position of hose weight if necessary. This should be done at the deepest part of the pool.
Problem: Air bubbles are noticeable in the return jets.
Solution:
 • Ensure the cleaner hose is assembled tightly.
 • Ensure cleaner head is not removed from the water while pump is running.
 • Ensure the hoses are not damaged.
 • Ensure the regulator valve is under water.

INSTALLING THE CLEANER

Standard Installation

The Pool Cleaner is designed to work in a wide variety of swimming pools. Both the standard in-skimmer installation and optional vacuum line installation are covered in this section. Check to see which most closely fits your pool configuration and follow the directions.

1. Turn the pool pump off.
2. Close the main drain and all suction lines, except the line from the skimmer to which the cleaner will be connected.
3. Press the compression adapter into the vacuum connection into the vacuum plate. See **Figure 6a** and **Figure 6b**.
4. Press the elbow connector into the compression adapter, you could add two elbow connectors (see **Figure 6a** and **Figure 7a**) or one elbow connector (See **Figure 6b** and **Figure 7b**) according to your skimmer condition.

Then press the regulator valve into the elbow connector. Make sure that the arrow under the regulator valve is pointing towards the skimmer.

5. Place cleaner into the pool. Turn it side to side and front to back to release any trapped air, allowing the cleaner to sink to the floor of the pool. Continue to feed the hose vertically down into the pool until it is completely filled with water and purged of air.

Note: If air is pulled into the pool plumbing it may cause your pump to lose prime.

6. Slide the hose protector into position on the hose to prevent the hose body from rubbing against the skimmer wall.
7. Insert the end of the hose through the skimmer opening and connect the hose directly onto the regulator valve. See **Figure 7a** and **Figure 7b**.

Figure 6a

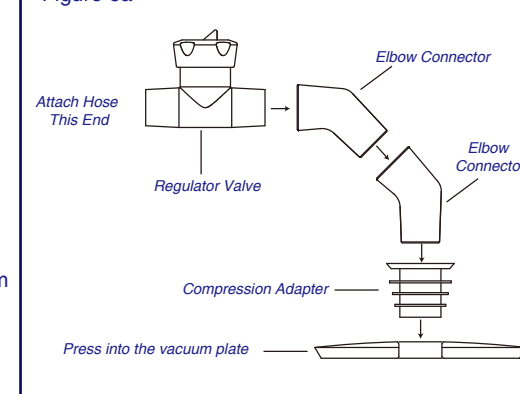


Figure 6b

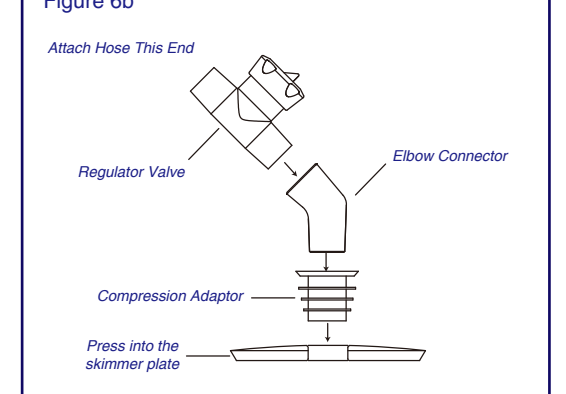


Figure 7a

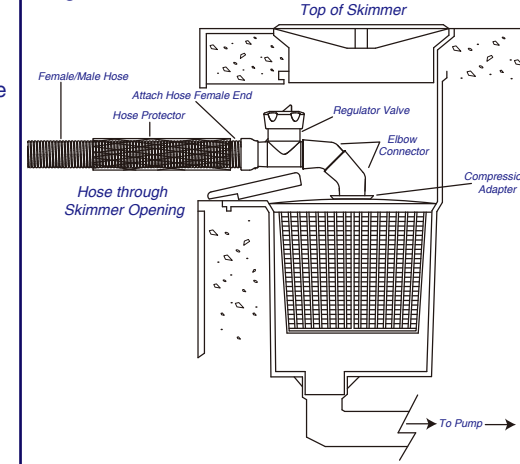


Figure 7b

