



| Electrical Information | | | |
|--------------------------------|--|---------|---------|
| Model No. | ST43-10 | ST43-20 | ST43-30 |
| Power Consumption(±5%) | 10W | 20W | 30W |
| Battery | LiFePO4 Battery | | |
| Battery Capacity | 76Wh | 156Wh | 230Wh |
| Solar Panels | Mono-Crystalline Solar Panel | | |
| Solar Panel Wattage | 30W | | |
| Charging Time | >3 Hrs | >6Hrs | >9Hrs |
| Operating time | Full power>8 hours,Intelligent mode 3-4 days | | |
| Solar charge Controller | PWM | | |
| Working Mode | Refer to Intelligent Control Mode | | |
| Control | Timmer dimming/PIR sensor | | |

| Optic Information | | | |
|-------------------------------------|-------------------------------|--------|--------|
| LED Type | LED 2835 | | |
| Luminous Flux (±10%) | 2000lm | 4000lm | 6000lm |
| Efficacy(4000K Ra70) | 200lm/W | | |
| Correlated Color Temperature | 4000K (3000K, 5000K optional) | | |
| Color Rendering Index | Ra70 (Ra80 optional) | | |
| Beam Angle | R10801 | | |
| UGR level | NA | | |

Description

ST43 is a new private design solar LED Street light, with Slim design and higher conversation efficiency Mono-crystalline photovoltaic Solar panel, 200lm/w efficiency to makes the products with better advantages to meet different requirements from customers.

Key Features

- Nice design with lighter weight,easier installation
- System efficiency upto 200lm/w with competitive price
- The Controller has built in Motion Sensor and timer dimming function
- LiFePO4 Battery is with longer lifetime,charge for 8 hours which can continuous working for 3 days
- IP65 & IK08 double protection
- Mono-crystalline photovoltaic with a higher conversation efficiency
- Adjustable angle
- Different Mounting Options

Applications

- Village streets
- Urban road
- Courtyard
- Parking Lot

Dimensions and Mount

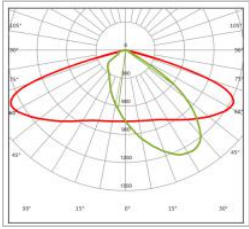
| | | | |
|---------------------------------------|---|-----------|-----------|
| Product Dimension (Side Entry) | 807X301X148mm | | |
| Luminaire Net Weight | 5.0±0.3kg | 5.7±0.3kg | 6.3±0.3kg |
| Export Carton Size | 750X370X195mm | | |
| Gross Weight | 7.2±0.3kg | 7.9±0.3kg | 8.5±0.3kg |
| Mounting Option | Post top/ Side Entry Pole clamp bracket /Wall Mount | | |
| Material | Aluminum Alloy Polycarbonate Optical Lens LiFePO4 Battery Mono-Crystalline Solar Panel | | |
| Finish | Powder Coating | | |
| Fixture Color | Silver | | |
| EPA | 2.56ft ² | | |
| IP Rating | IP65 | | |

Lifespan and Warranty

| | | | |
|----------------------------------|---------------|--|--|
| Operating Temperature | 0°C to + 50°C | | |
| | 31000hrs-L90 | | |
| Life Time of LED @Ta=25°C | 64000hrs-L80 | | |
| | 101000hrs-L70 | | |
| Warranty | 3 Years | | |

New Features

** Please consult us for details.*



R10801

Mounting Options



Side Entry



Post top



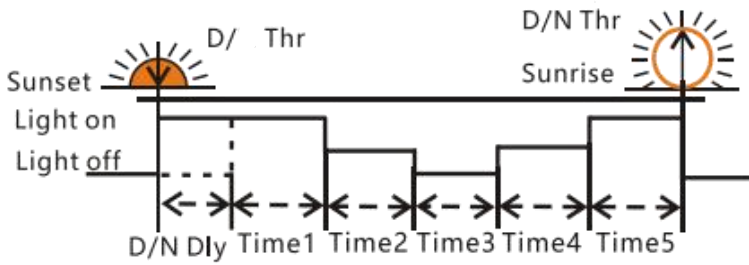
pole clamp bracket



Wall Mount

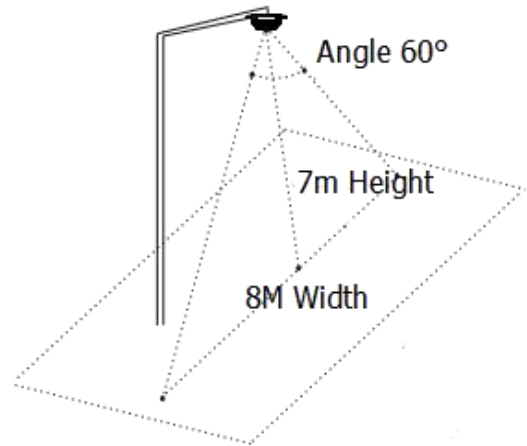
Intelligent Control Mode

5 Stage Night Mode



* Please note the Sensor function is only available at Time 3 and Time 4

*You can set the fixtures with 5 stages timer dimming yourself by the remote Controller.



PIR Sensor Detect Areas

Factory Default setting:



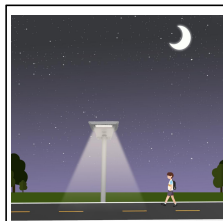
With Sufficient natural light, the light keeps charging



1st 4hours from light switches on, the light keeps 100% brightness when presence is detected



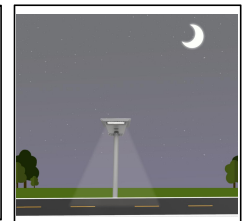
The light keeps 30% when there is no presence is detected after 30S hold time in the 1st 4 Hours



The light keeps 60% brightness when there is presence is detected from 5th to 8th Hours after light switches on



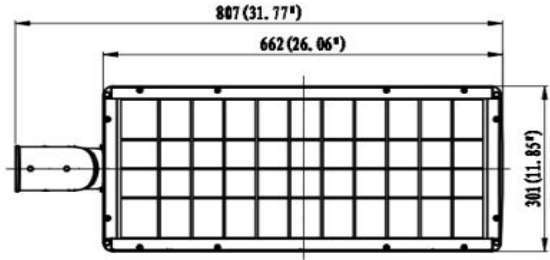
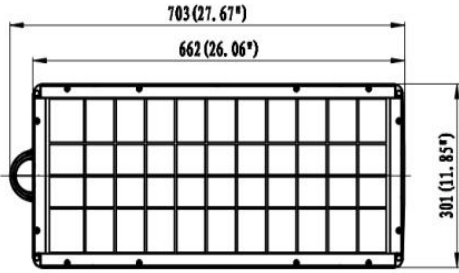
After 30S hold time within 5th to 8hours , the light dim to 20% brightness when there is no presence is detected



The light keeps 10% brightness for 3Hours until the Sunrise.

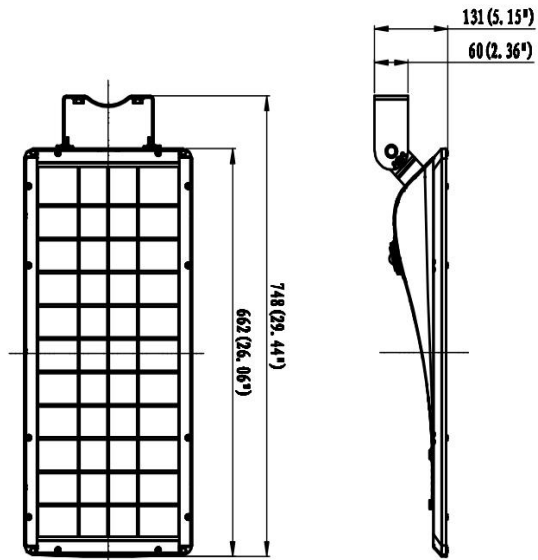
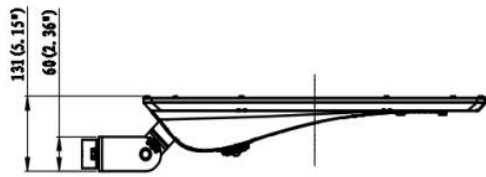
The Controller recognizes day and night based on the Solar Array Open Circuit Voltage, this day/night threshold can be modified according to local light conditions and the Solar Array Used, setting range 3.0 ~8.0V

Unit: mm



Post Top Mount

Side Entry Mount



Pole Clamp Bracket Mount

Wall Mount



Optic lens

High transmittance PC materials,
UV test approval.

Code: please refer to Photometry for different beam
angle.



Pole mount spigot

ADC12 materials, $\pm 15^\circ$ tilt adjustable, for dia.34/
42/ 60/ 76mm pole.

Code: SP-R03-01(for dia.34mm)
Code: SP-R03-02(for dia.42mm)
Code: SP-R03-03(for dia.60mm)
Code: SP-R03-04(for dia.76mm)



$\pm 30^\circ$ Pole Clamp Bracket

SPCC materials with outdoor powder coating.
can be also the wall mount bracket

Pole Clamp Bracket for 60mm/76mm Pole
Only.



Wall mount adaptor

SPCC materials with outdoor powder coating.

Code: SP-R03-05



T shape pole mount adaptor

Q235 with Akzo Powder Coating materials, for
100x100mm square pole.

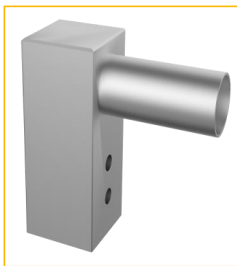
Code: SP-R03-07



T shape pole mount adaptor

Q235 materials, for dia.60/ 76mm pole

Code: SP-R03-06(for dia.60mm)
Code: SP-R03-08(for dia.76mm)



L shape pole mount adaptor

Q235 materials, for 100x100mm square pole.

Code: SP-R03-10



L shape pole mount adaptor

Q235 materials, for dia.90mm pole

Code: SP-R03-09(for dia.90mm)



Corner mount adaptor

SPCC materials with outdoor powder coating.

Code: SP-R19-02



L shape pole mount adaptor

Q235 materials, for dia.60mm pole

Code: SP-R19-01(for dia.60mm)



Remote Controller

Remote Controller for Solar Street light
Code: S-Unit(SU07)