

Marvo™

LED Flood & Area Light

Multi-Wattage & Multi-CCT Switchable

E-LITE semicon

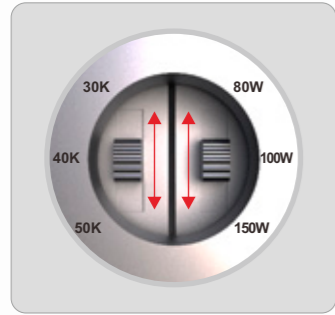




EXTRAORDINARY SKU REDUCTION

Featuring extraordinary SKU reduction with universal mounting, power and color temperature adjustability, the Innovative MARVO™ offers the best value in the Commercial & Industrial Floodlight market.

PRODUCT FEATURES & BENEFITS



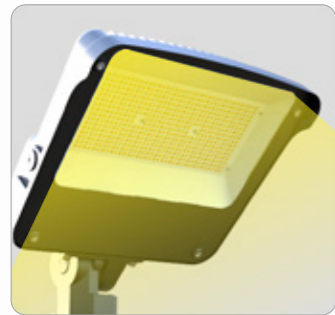
Multi-CCT & Multi-Wattage Switchable
80W-100W-150W
3000K-4000K-5000K



Slim & Sturdy One-piece
Die Cast Aluminum Housing



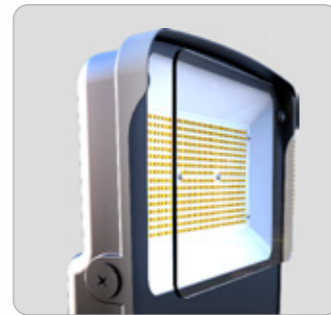
Integrated Visor Reduces
Observable Glare



High Efficacy Up to 160LPW



High-reflectance white reflector
maximizes output



Tempered glass lens won't yellow



Photocell

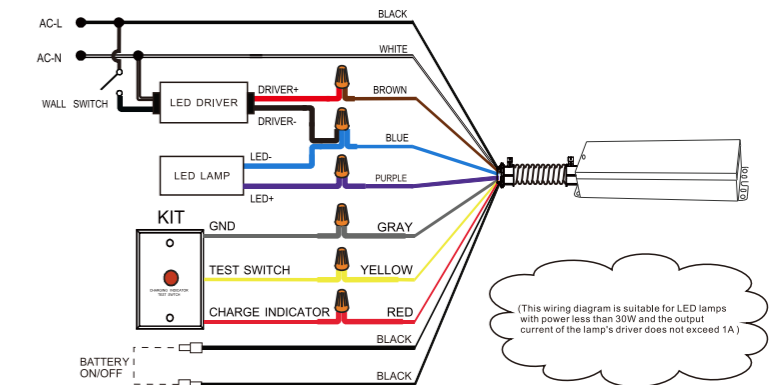
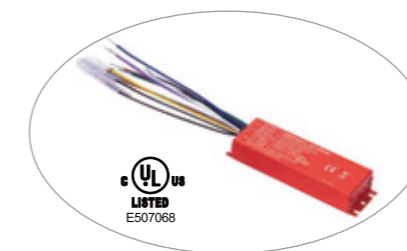


EMERGENCY POWER PACK (OPTIONAL)

Emergency power pack installed in the light fixture as an option to provide ≥ 90 mins emergency lighting, which is switched on automatically in case of external power cut off.

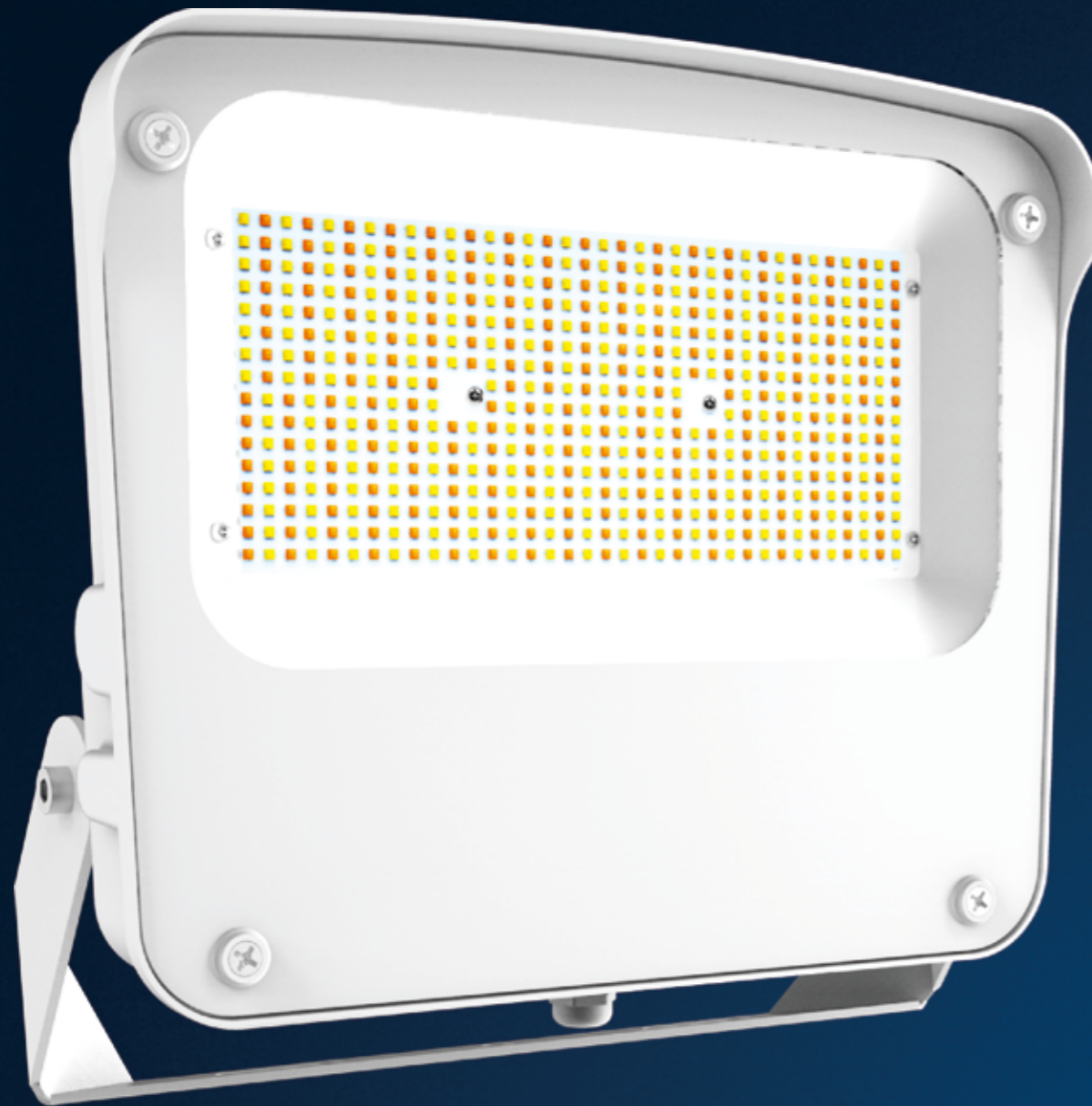
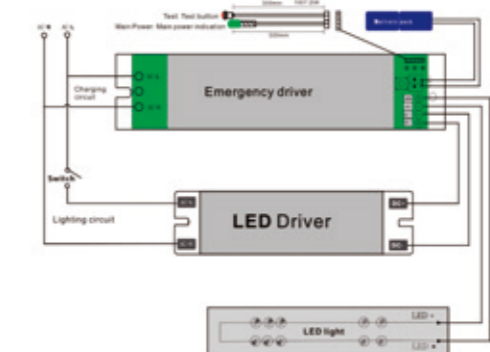
For North America Market

Rated Voltage	AC 100-277V	Emergency Time	≥ 90 MIN	Switch-over Time	≤ 1 S
Main Power Consumption	5W	IP Rating	IP65	Battery Specification	LI-ION/3.6V/2600mAH
Charging Time	≤ 24 H	Operating Temperature	0°C-55°C	Control	Individual Control



For EU & Other Market

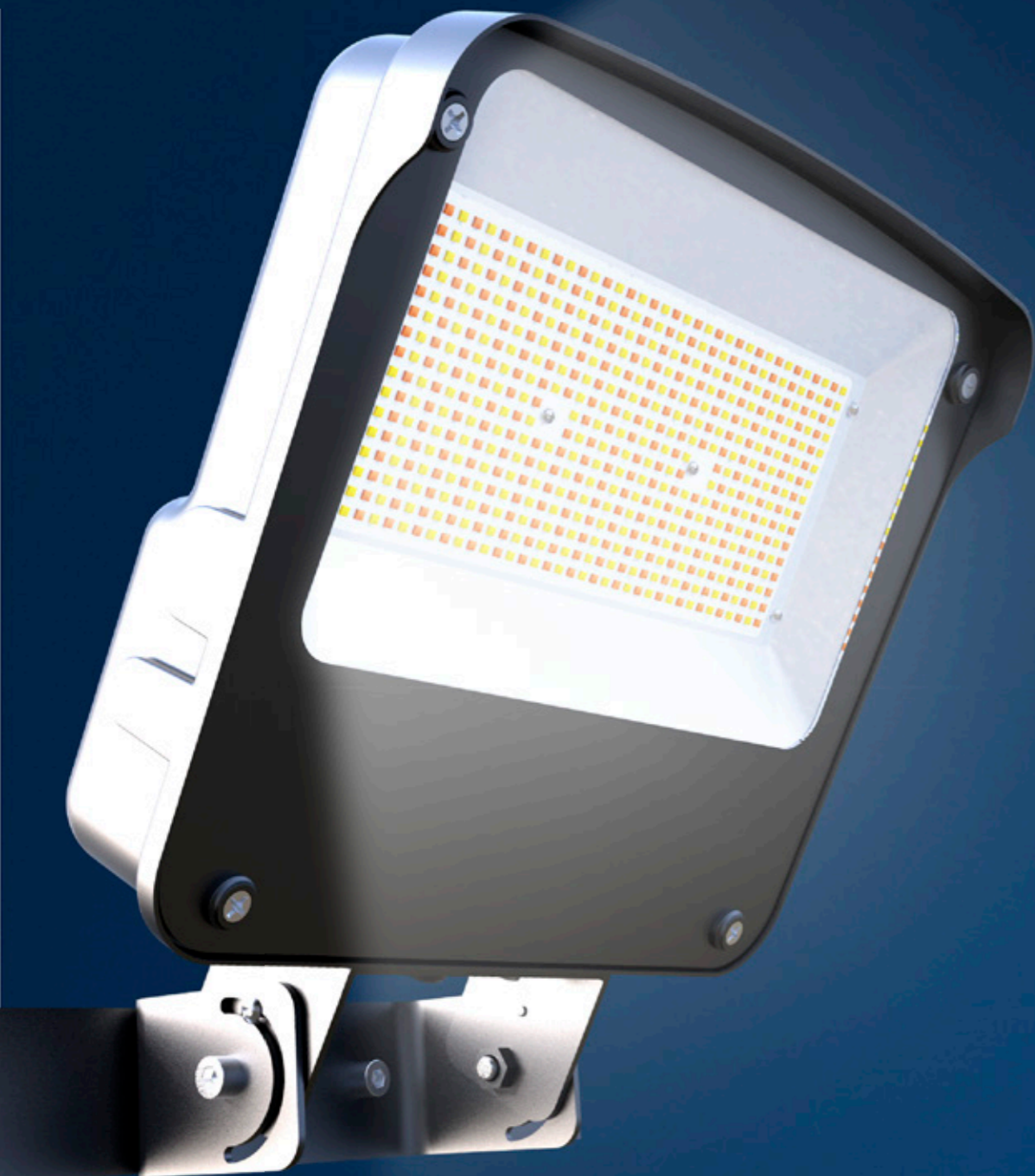
Rated Voltage	AC 100-277V	Emergency Time	≥ 90 MIN	Switch-over Time	≤ 1 S
Main Power Consumption	≤ 15 W	IP Rating	IP65/IP30	Battery Specification	NI-cd/12V/1500mAh
Charging Time	≤ 24 H	Operating Temperature	-10°C-55°C	Control	Individual Control



PERFORMANCE

LEDs	Philips Lumileds
CCT	3000K,4000K,5000K
CRI	≥70
L70	L70>120,000 Hours
Voltage	100-277 VAC
PF	0.95 min
IP	IP66
IK	IK08
Material	Corrosive Resistant Polyester Powder
Protection	Tempered Glass
Temperature	Operating Temperature:-45°C to +45°C (-49°F to 113°F) Storing Temperature:-45°C to +80°C (-49°F to 176°F)
Humidity	15% to 95% RH



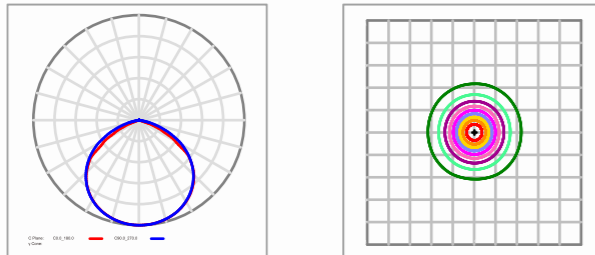


SPECIFICATIONS

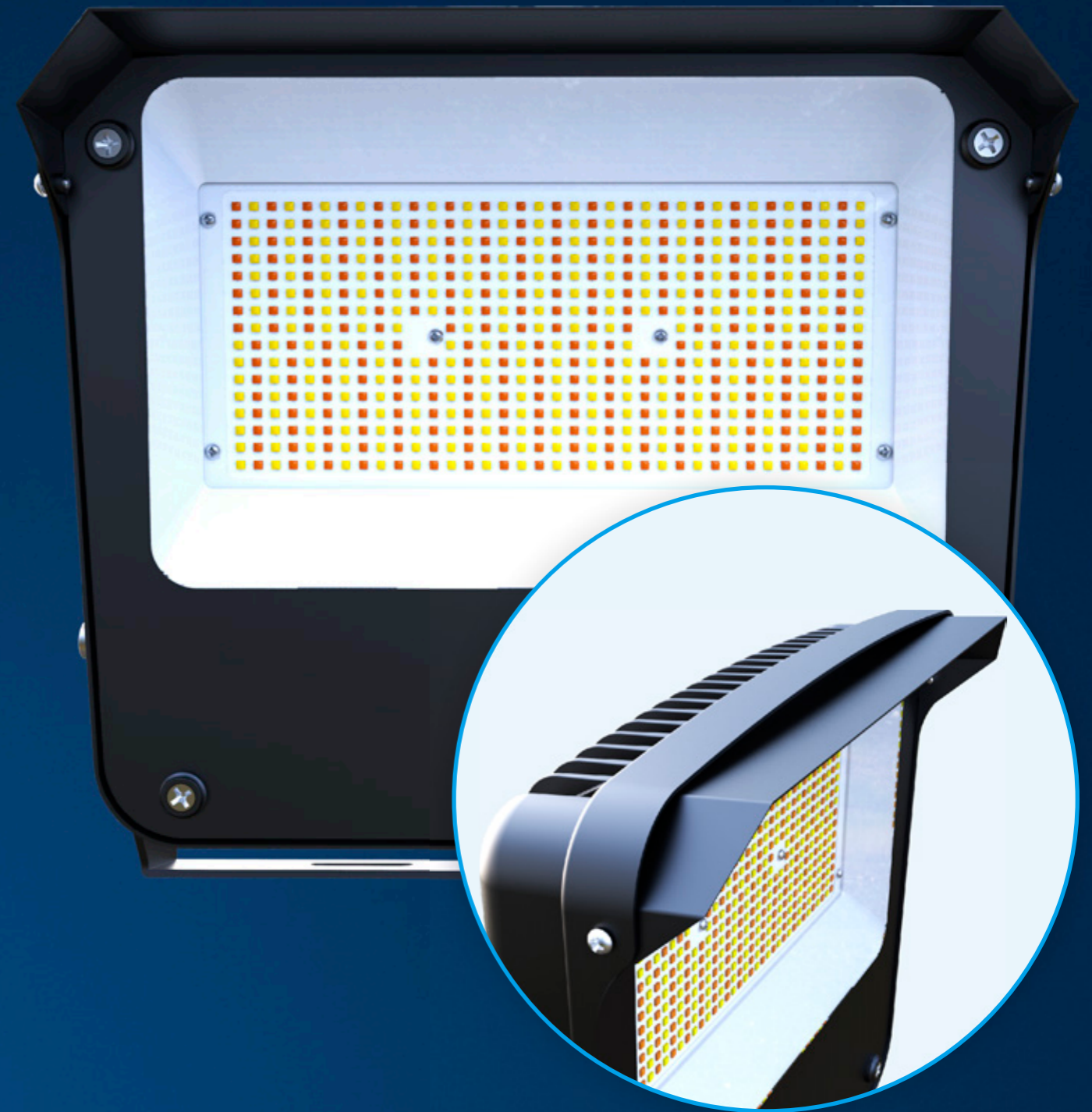
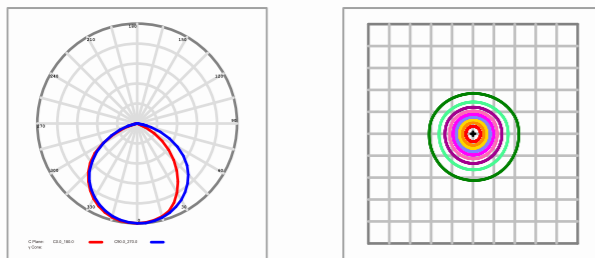
Part#	CCT	Power	Efficacy(IES)	Total Lumen	N.W	Product Dimensions
EL-MVFL-MW (80/100/150)T-MCCT (30K/40K/50K)	5000K	150W	140LPW	21,000lm	3.5kg / 7.7lbs	338.5×323×80mm 13.3×12.7×3.15in
		100W	148LPW	14,800lm		
		80W	150LPW	12,000lm		
	4000K	150W	150LPW	22,500lm		
		100W	158LPW	15,800lm		
		80W	160LPW	12,800lm		
	3000K	150W	135LPW	20,250lm		
		100W	143LPW	14,300lm		
		80W	145LPW	11,600lm		
EL-MVFL-MW (150/180/200)T-MCCT (30K/40K/50K)	5000K	200W	140LPW	28,000lm	3.5kg / 7.7lbs	338.5×323×80mm 13.3×12.7×3.15in
		180W	145LPW	26,100lm		
		150W	150LPW	22,500lm		
	4000K	200W	155LPW	31,000lm		
		180W	158LPW	28,440lm		
		150W	160LPW	24,000lm		
	3000K	200W	135LPW	27,000lm		
		180W	140LPW	25,200lm		
		150W	145LPW	21,750lm		

PHOTOMETRICS

120° (Without Additional Louver)



100x120° (With Additional Louver)



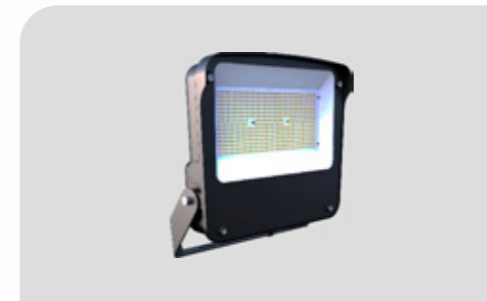


INSTALLATION

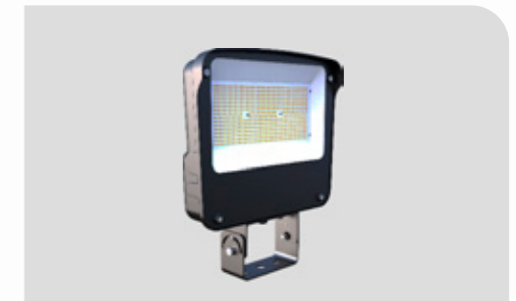
For high performance and long term reliability, the light should be installed in free air.

Universal Hanging Bracket

1. Rotate the bracket to the desired angle and tighten screw to lock it.
2. Bolt the universal mounting bracket to the field mounting point. Bolt the center point before the two side points. Tighten the bolts to wrench tight.
3. Wiring. (Connect supply wires to luminaire wire leads per the wiring diagram using methods that comply with all applicable codes.)



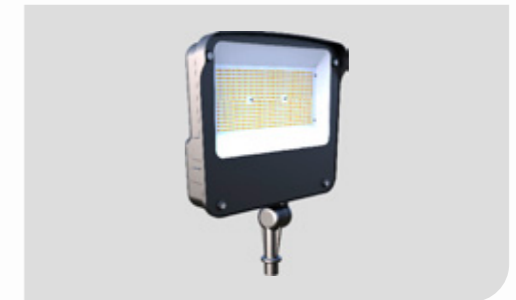
U Bracket Mount



Trunion



Slip Fitter



Knuckle

ORDERING INFORMATION

