

Marvo™

LED Flood & Area Light

Dedicated Wattage

E-LITE semicon



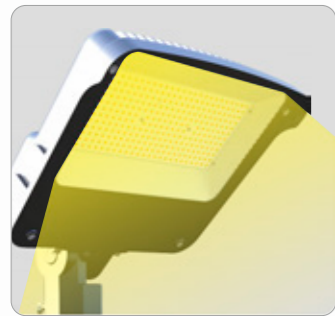


EXTRAORDINARY PERFORMANCE

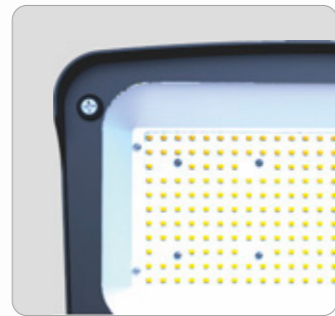
Featuring universal mounting choices and exquisite design, this innovative MARVO™ offers the best value in the commercial&industrial flood light market.

E-LITE semicon / Hello@elitesemicon.com / www.elitesemicon.com

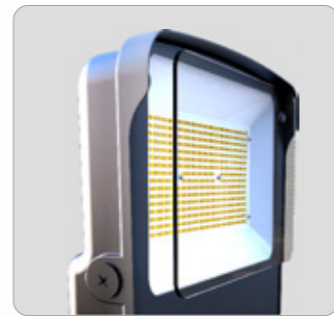
PRODUCT FEATURES & BENEFITS



High Efficacy Up to 140LPW



High-reflectance white reflector maximizes output



Tempered glass lens won't yellow



Integrated Visor Reduces Observable Glare



Photocell



Slim & Sturdy One-piece Die Cast Aluminum Housing

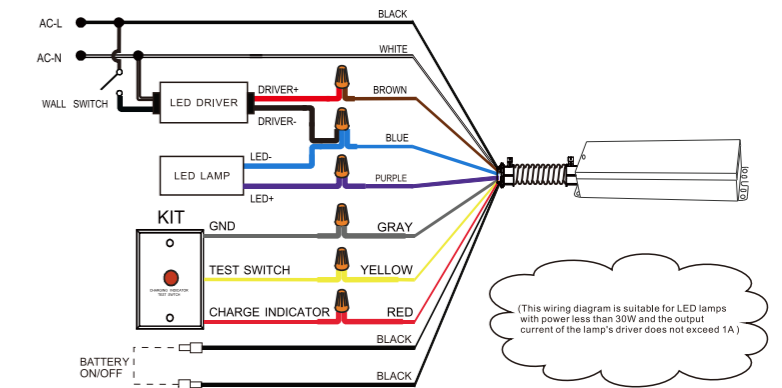
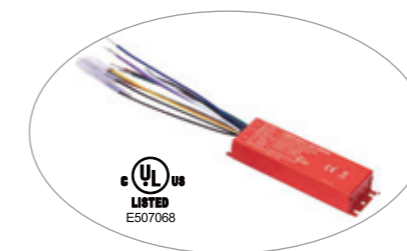


EMERGENCY POWER PACK (OPTIONAL)

Emergency power pack installed in the light fixture as an option to provide ≥ 90 mins emergency lighting, which is switched on automatically in case of external power cut off.

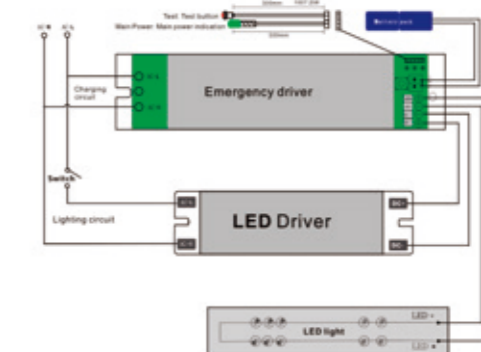
For North America Market

Rated Voltage	AC 100-277V	Emergency Time	≥ 90 MIN	Switch-over Time	≤ 1 S
Main Power Consumption	5W	IP Rating	IP65	Battery Specification	LI-ION/3.6V/2600mAH
Charging Time	≤ 24 H	Operating Temperature	0°C-55°C	Control	Individual Control



For EU & Other Market

Rated Voltage	AC 100-277V	Emergency Time	≥ 90 MIN	Switch-over Time	≤ 1 S
Main Power Consumption	≤ 15 W	IP Rating	IP65/IP30	Battery Specification	NI-cd/12V/1500mAh
Charging Time	≤ 24 H	Operating Temperature	-10°C-55°C	Control	Individual Control



PERFORMANCE

LEDs	Philips Lumileds
CCT	4500~5500K (Standard) 2500~6500K (Optional)
CRI	≥70
L70	L70>120,000 Hours
Voltage	100-277 VAC
PF	0.95 min
IP	IP66
IK	IK08
Coating	Corrosive Resistant Polyester Powder
Material	Tempered Glass
Temperature	Operating Temperature:-45°C to +45°C (-49°F to 113°F) Storing Temperature:-45°C to +80°C (-49°F to 176°F)
Humidity	15% to 95% RH





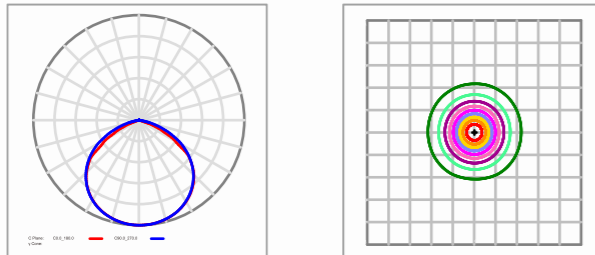
SPECIFICATIONS

Part#	Power	Efficacy(IES)	Total Lumen	N.W	Product Dimensions
EL-MVFL-20	20W	140LPW	2,800lm	1.5kg / 3.3lbs	228×203×60mm 8.9×7.9×2.3in
EL-MVFL-30	30W	140LPW	4,200lm		
EL-MVFL-40	40W	140LPW	5,600lm		
EL-MVFL-50	50W	140LPW	7,000lm		
EL-MVFL-60	60W	140LPW	84,00lm		
EL-MVFL-80	80W	140LPW	11,200lm	3.5kg / 7.7lbs	338.5×323×80mm 13.3×12.7×3.15in
EL-MVFL-100	100W	140LPW	14,000lm		
EL-MVFL-150	150W	140LPW	21,000lm		
EL-MVFL-200	200W	140LPW	28,000lm		

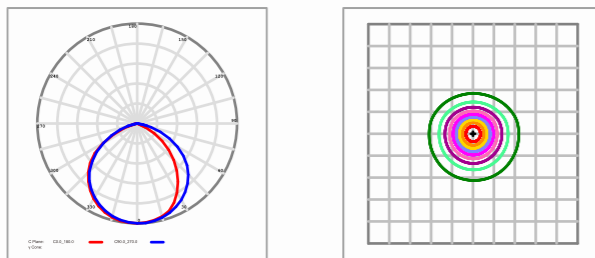


PHOTOMETRICS

120° (Without Additional Louver)



100x120° (With Additional Louver)



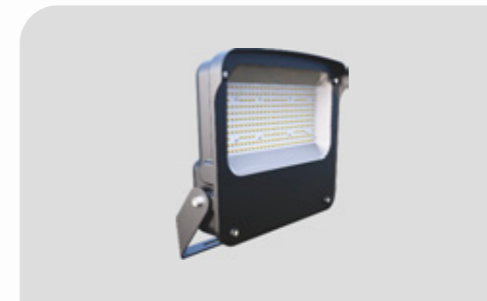


INSTALLATION

For high performance and long term reliability, the light should be installed in free air.

Universal Hanging Bracket

1. Rotate the bracket to the desired angle and tighten screw to lock it.
2. Bolt the universal mounting bracket to the field mounting point. Bolt the center point before the two side points. Tighten the bolts to wrench tight.
3. Wiring. (Connect supply wires to luminaire wire leads per the wiring diagram using methods that comply with all applicable codes.)



U Bracket Mount



Trunion

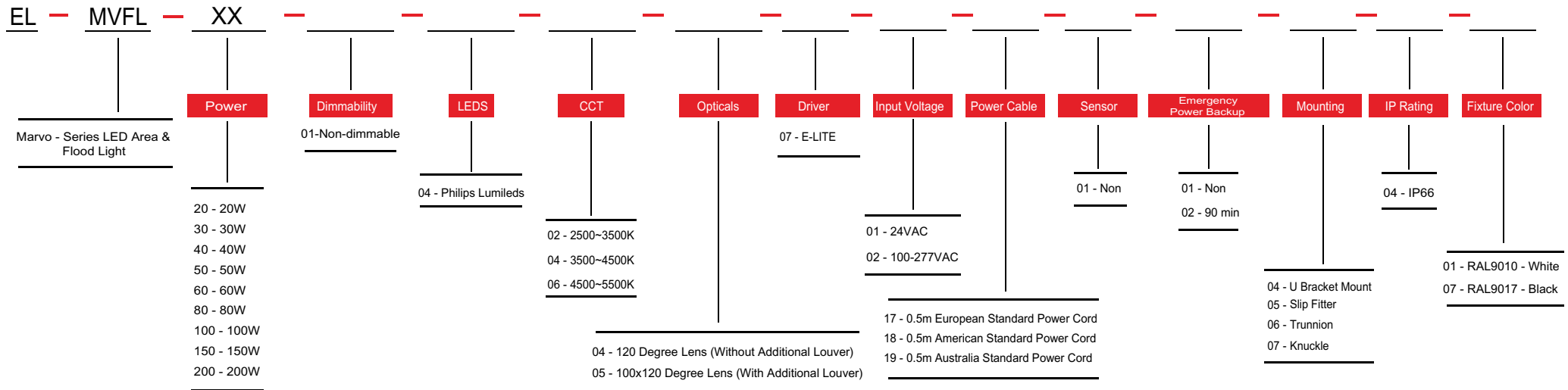


Slip Fitter



Knuckle

ORDERING INFORMATION



E-Lite Semiconductor Co., Ltd.
 Headquarter & Factory
 Website: <http://www.elitesemicon.com>