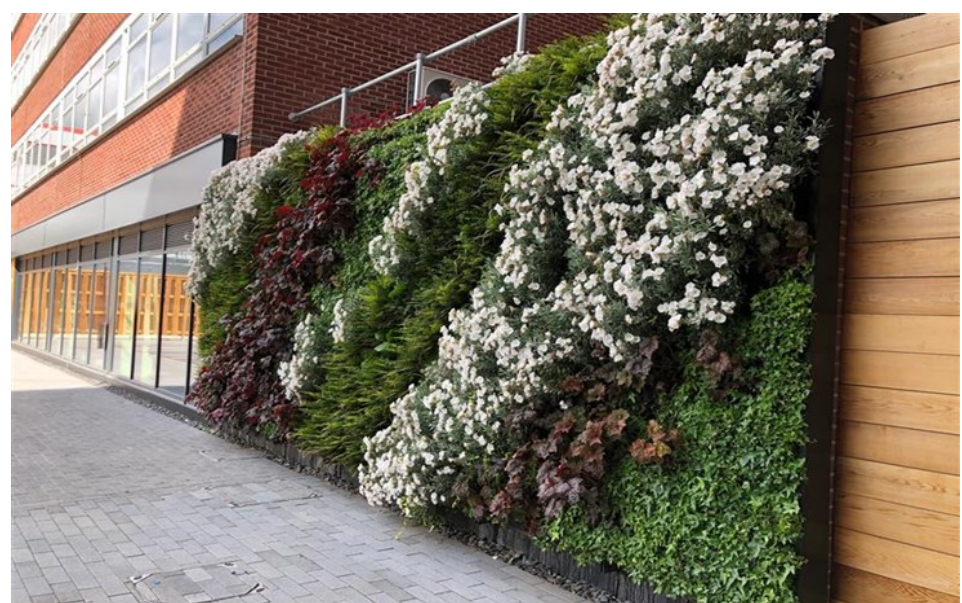
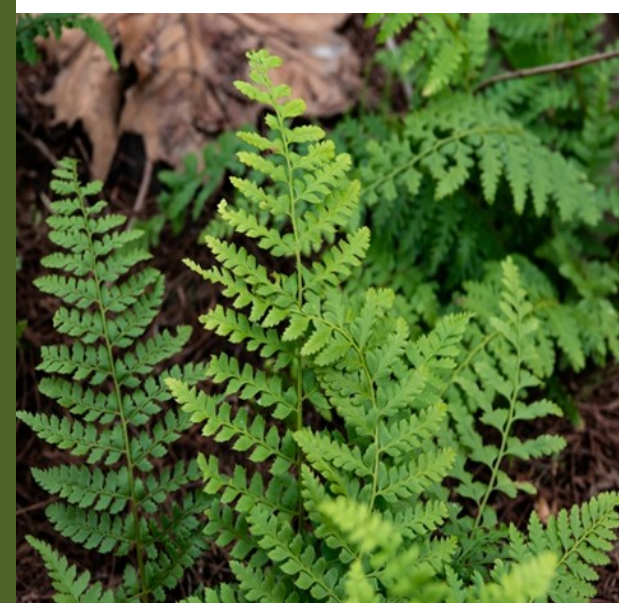




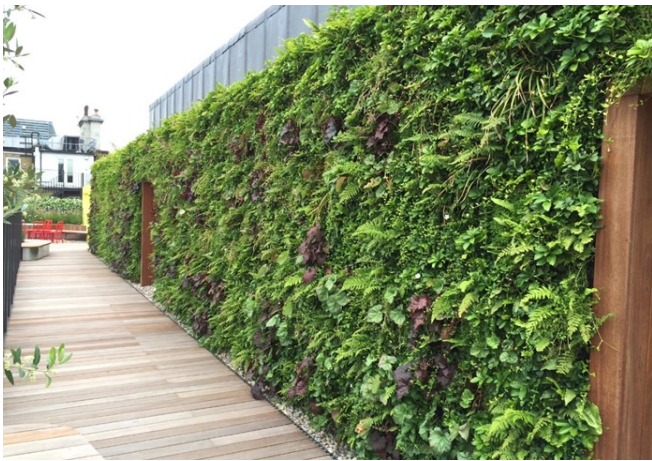
PlantBox™

The cleverly simple
vertical garden



In partnership with
Growing Revolution





The revolutionary modular vertical garden system that combines biology with technology to bring your walls to life and life to your walls!



INTRODUCING PlantBox™

Why Choose PlantBox?

Stylish

PlantBox provides you and your clients with instant greening to transform any space

Sustainable

PlantBox is made in the UK from 100% recycled post-consumer waste

Versatile

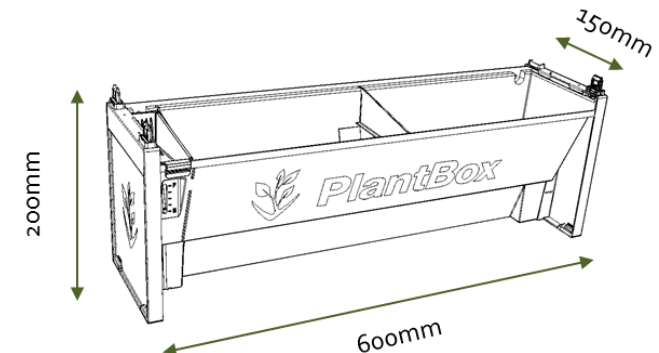
Plant everything from evergreens to edibles making vertical growing easy



Product

PlantBox Specification Details

Unit dimensions	600mm x 200mm x 150mm
Fully loaded weight	70kgs per m ² (approx. 8kg per unit)
Base material	100% recycled polypropylene
Reservoir capacity	1.8L
Plants per m ²	33 plants (8.33 troughs per m ²)
Pot size	Anything up to 13cm (1 LTR) – 4 plants per trough
Design life	>10+ years
Compost type	Peat-free multi-use – 4-5L compost per trough
Nutrient feed	Drip feed or slow-release pellet into soil/compost





Hoardings



Commercial



Balconies



Internal



Public realm



Courtyards

Testimonials...

“ Transformation. The living wall softens the look of a plain rendered block wall at the back of the compact patio space”

Private resident, London

“ Brilliant living wall system. My team and our customers love the living wall as it has brought nature to our clients courtyard”

Pride Landscaping and Design

“ PlantBox. A great and easy system to use!”

M. Kirk - Urbanism and Landscape Director, BDP

“ It's just gorgeous, it makes such a difference. We get stuck indoors and forget about the sun! It will be lovely to sit here and get some fresh air”

NHS Nightingale Hospital, ExCeL, London

Reconnect with nature using PlantBox

Good for the planet

- Built to last using 100% UK recycled post-consumer plastic, by manufacturers in the UK

Increasing green areas will sustain wildlife and pollinators



Helps plants to thrive

- No green spaces = loss of natural habitats = significant reduction in pollinators and wildlife.

Plants play a vital role in sustaining wildlife and other pollinators

Great for biodiversity

- Got a boring or uninspiring wall? Quickly transform it using PlantBox
- Structurally proven to 8 metres high
- Flexible design allows you to create any size wall



Versatile and adaptable living wall system that only requires restraint at height



Cleverly simple, low-maintenance irrigation

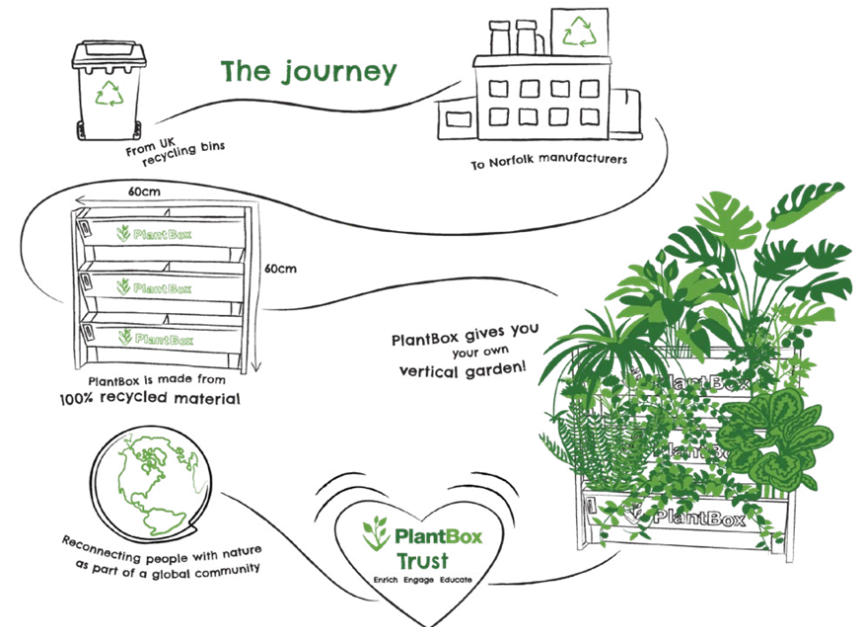
- Works with manual or automatic watering systems (including remote sensing if needed)
- 1.8L water reservoirs for each trough create in built resilience
- Reassuring float indicators show water levels at all times

Sustainability

PlantBox troughs are made in the UK from 100% recycled post-consumer plastic, with £1 from the sale of every trough going to the PlantBox Trust.

Our goal is to introduce more green spaces to our cities, towns, offices and homes, resulting in a healthier and happier population all over the world - from Chichester to Kinshasa.

Through the PlantBox Trust, we will support local projects and charitable initiatives, providing people with green spaces, clean water, good nutrition and improved air quality.



Transform your space with
PlantBox today



GreenBlue Gardens

Northpoint, Compass Park

Junction Road

Bodiam

East Sussex

TN32 5BS

T: 01580 830800

contact@greenbluegardens.com

