

Delock PCI Express Card to 2 x Serial RS-232 + 1 x Parallel IEEE1284

Description

The PCI Express card by Delock expands a PC by two external serial ports as well as one external parallel port. Different devices such as scanner, printer, mouse etc. can be connected to this card.



Specification

- Connectors:
 - external:
 - 2 x serial RS-232 DB9 male (separate rear bracket)
 - 1 x Parallel DB25 female
 - internal:
 - 1 x PCI Express x1, V1.1
- Chipset: WCH CH384L
- Operating temperature: -40 °C ~ 85 °C
- Relative humidity: 0 - 95 % (non condensing)
- Dimensions (LxWxH): ca. 79 x 59 x 11 mm
- Serial specification:
 - Data transfer rate up to 460.8 Kbps
 - FIFO: 256 byte
 - Compatible with 16C950 UART
- Parallel specification:
 - Data transfer rate up to 1.5 Mbps
 - FIFO: 256 byte
 - Supports SPP, Byte and ECP mode

System requirements

- Windows 7/7-64/8.1/8.1-64/10/10-64
- PC with one free PCI Express slot

Package content

- PCI Express card
- Slot bracket
- 3 x low profile bracket
- Driver CD
- User manual

Item no. 90413

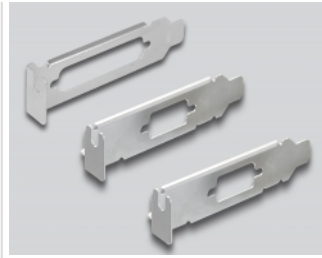
EAN: 4043619904136

Country of origin: China

Package: Retail Box



Images



General

Specification: RS-232 (EIA / TIA)
PCIe 1.1
SPP, EPP, ECP

Supported operating system: Windows 7 32-bit
Windows 7 64-bit
Windows 8.1 32-bit
Windows 8.1 64-bit
Windows 10 32-bit
Windows 10 64-bit

Slot: PCIe

Interface

External: 2 x serial RS-232 DB9 male
1 x parallel port

Internal: 1 x PCI Express x1, V1.1

Technical characteristics

Chipset: WCH CH382L

Data transfer rate: up to 460,8 Kbps
LPT up to 1.5 MBps

FIFO: 256 Byte

UART: 16C550
16C552
16C554

Physical characteristics

Slot bracket: low profile
standard