

Delock PCI Express x4 Card to 1 x SuperSpeed USB 20 Gbps (USB 3.2 Gen 2x2) USB Type-C™ + 1 x USB Type-C™ PD 20 Watt

Description

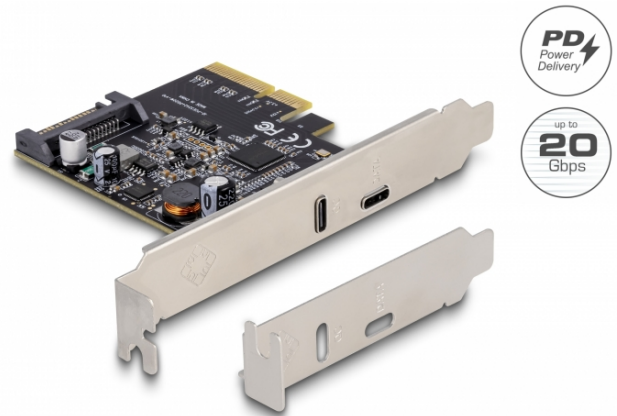
This PCI Express card by Delock expands the PC by one external **USB 3.2** port. Different USB devices, such as docking stations, card readers, external enclosures etc., can be connected to the card.

SuperSpeed USB 20 Gbps

The card allows a data transfer rate of 20 Gbps on the USB-C™ port.

Power Delivery (PD) at the USB-C™ port

The USB Type-C™ port supports the Power Delivery function as well as diverse fast charging technologies. This allows connected devices such as smartphones, tablets and even laptops to be charged.



Specification

- Connectors:
 - external:
 - 1 x SuperSpeed USB 20 Gbps (USB 3.2 Gen 2x2) USB Type-C™ female
 - 1 x USB Type-C™ Power Delivery female
 - internal:
 - 1 x PCI Express x4, V3.0
 - 1 x SATA 15 pin power connector
- Chipset: Asmedia ASM3242
- Data transfer rate up to:
 - SuperSpeed USB 20 Gbps,
 - SuperSpeed USB 10 Gbps,
 - SuperSpeed USB 5 Gbps,
 - Hi-Speed 480 Mbps,
 - Full-Speed 12 Mbps,
 - Low-Speed 1.5 Mbps
- Downwards compatible to USB 3.0, USB 2.0, USB 1.1
- Electrical power data port: max. 15 watt (5 V / 3 A)
- Electrical power PD port: max. 20 watt (5 ~ 12 V)
- Bootable
- Supports UASP
- Supports eXtensible Host Controller Interface (xHCI) specification 1.1
- Supports Multiple INs

System requirements

- Linux Kernel 5.8 or above
- Windows 8.1/8.1-64/10/10-64
- PC with one free PCI Express x4 / x8 / x16 / x32 slot

Package content

- PCI Express card SuperSpeed USB 20 Gbps
- Low profile bracket
- User manual

Item no. 90074

EAN: 4043619900749

Country of origin: China

Package: Retail Box

Images



General	
Form factor:	Low Profile
Function:	bootable
Supported operating system:	Linux Kernel 5.8.0 or above Windows 10 32-bit Windows 10 64-bit Windows 8.1 32-bit Windows 8.1 64-bit
Interface	
External:	1 x SuperSpeed USB 20 Gbps (USB 3.2 Gen 2x2) USB Type-C™ female 1 x USB Type-C™ Power Delivery female
Technical characteristics	
Chipset:	Asmedia ASM3242
Data transfer rate:	20 Gbps