

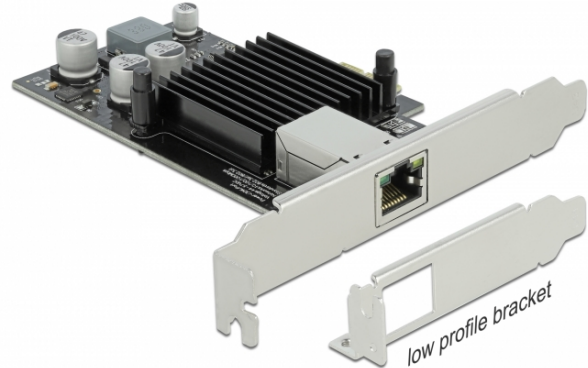
Delock PCI Express x1 Card 1 x RJ45 Gigabit LAN PoE+ i210

Description

The PCI Express card by Delock offers **one network port** with a data transfer rate up to **1000 Mbps**.

PoE support

The RJ45 port supports **Power over Ethernet** according to IEEE 802.3af / 802.3at, so power can be supplied to PoE-enabled devices, such as IP cameras or PoE splitters via the network cable.



Specification

- Connectors:
 - external: 1 x Gigabit LAN RJ45 jack with screw-nut
 - internal: 1 x PCI Express x1, V2.1
- Chipset: Intel i210
- Data transfer rate:
 - Ethernet up to 10 Mbps (Half/Full Duplex)
 - Fast Ethernet up to 100 Mbps (Half/Full Duplex)
 - Gigabit Ethernet up to 1000 Mbps (Half/Full Duplex)
 - PCI Express x1 up to 2.5 Gbps
- Suitable for Gigabit Ethernet vision systems
- Supports IEEE 1588 PTP
- Supports IEEE 802.3 / 802.3u / 802.3z / 802.3ab
- Supports IEEE 802.1Q Virtual LAN (VLAN)
- Supports IEEE 802.3az (Energy Efficient Ethernet)
- Supports 9k Jumbo Frames
- Supports PXE
- Supports IEEE 802.3af PoE
- Supports IEEE 802.3at PoE+
- Phantom power (Mode A, pairs 1/2 and 3/6)
- Output power: max. 30 W total
- LED indicator for link and activity

System requirements

- Windows 8.1/8.1-64/10/10-64
- PC with one free PCI Express slot

Package content

- PCI Express card
- Low profile bracket
- Driver CD
- User manual

Item no. 89574

EAN: 4043619895748

Country of origin: China

Package: • White Box

Images



General	
Supported operating system:	Windows 8.1 32-bit Windows 8.1 64-bit Windows 10 32-bit Windows 10 64-bit
Interface	
External:	1 x Gigabit LAN RJ45 jack
Internal:	1 x PCI Express x1, V2.1
Technical characteristics	
Chipset:	Intel® i210
Data transfer rate:	Ethernet up to 10 Mbps Fast Ethernet up to 100 Mbps Gigabit Ethernet up to 1 Gbps
Physical characteristics	
Slot bracket:	low profile standard