

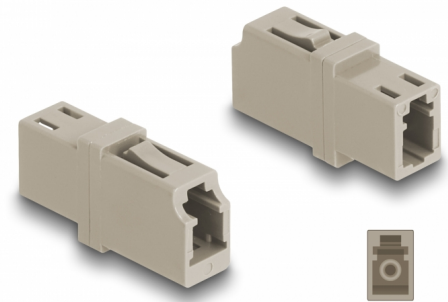
Delock Optical Fiber Coupler LC Simplex female to LC Simplex female OM1/OM2 beige

Description

With this LC Simplex coupling by Delock, optical fiber male connectors can be easily connected to each other. The coupling enables a direct connection to the optical fiber cable and is suitable for simple mounting in optical fiber connection boxes, cabinets and patch panels.

Protection by dust cover

The coupling is equipped with an appropriate cap to protect the sleeve from dust and to keep it clean.



Item no. 87986

EAN: 4043619879861

Country of origin: China

Package: Zip poly bag

Specification

- Connectors:
 - 1 x LC Simplex female
 - 1 x LC Simplex female
- For multi-mode fiber OM1 / OM2
- Insertion loss < 0.2 dB
- Ceramic sleeve
- With dust cover
- Operating temperature: -40 °C ~ 85 °C
- Material: plastic
- Colour: beige
- Dimensions (LxWxH): ca. 25.7 x 13.3 x 9.5 mm

System requirements

- A free LC Simplex male port

Package content

- Optic fiber coupler

Images



Interface

Connector 1:	1 x LC Simplex female
Connector 2:	1 x LC Simplex female

Technical characteristics

Operating temperature:	-40 °C ~ 85 °C
------------------------	----------------

Physical characteristics

Material:	plastic
Length:	25.7 mm
Width:	13.3 mm
Height:	9.5 mm
Colour:	beige