

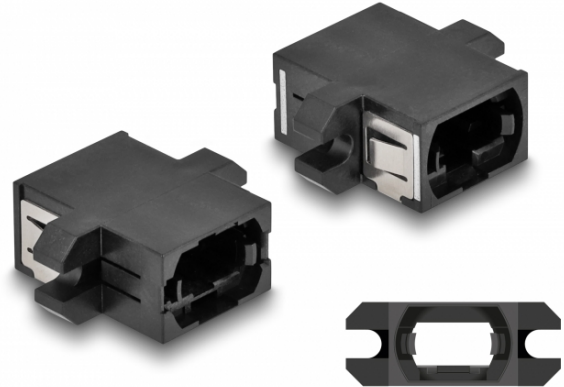
# Delock Optical Fiber Coupler MPO female to MPO female black

## Description

With this MPO coupling by Delock, two MPO male connectors can be easily connected to each other. The coupling enables a direct connection with the MPO optical fiber cables and is suitable for simple mounting in optical fiber connection boxes, cabinets, HD cassettes and patch panels.

### Protection by dust cover

The coupling is equipped with an appropriate cap to protect the sleeve from dust and to keep it clean.



## Specification

- Connectors:
  - 1 x MPO female
  - 1 x MPO female
- Key-up to key-down direction
- With dust cover
- Mounting via metal holder or screws
- 2 x mounting holes
- Mounting hole diameter: ca. 4 mm
- Pitch of screw hole: ca. 20 mm
- Panel cut-out (WxH): ca. 14.8 x 9.8 mm
- Operating temperature: -40 °C ~ 85 °C
- Colour: black
- Material: plastic
- Dimensions (LxWxH): ca. 25.0 x 19.8 x 9.8 mm

## System requirements

- A free MPO male port

## Package content

- MPO coupler

## Item no. 87932

EAN: 4043619879328

Country of origin: China

Package: Zip poly bag

## Images



Interface	
Connector 1:	1 x MPO female
Connector 2:	1 x MPO female
Technical characteristics	
Operating temperature:	-40 °C ~ 85 °C
Physical characteristics	
Material:	plastic
Length:	25.0 mm
Width:	19.8 mm
Height:	9.8 mm
Colour:	black