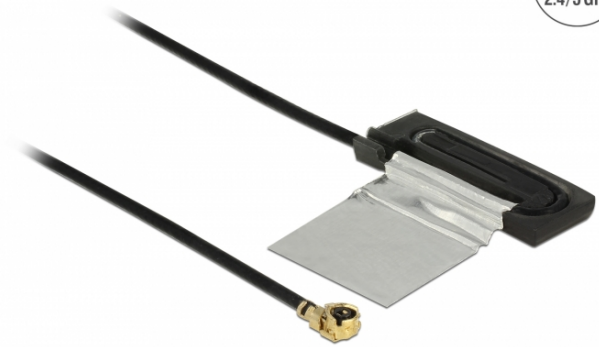


# Delock WLAN 802.11 ac/a/h/b/g/n Antenna MHF® I plug 1.5 - 2.0 dBi 1.13 25 cm CCD internal

## Description

This antenna by Delock allows the usage of the 2.4 GHz + 5 GHz WLAN bands indoors.



25 cm

## Specification

- Connector: 1 x MHF® I plug
- Frequency range:  
2400 - 2500 MHz  
5150 - 5850 MHz
- Bluetooth, WLAN 2.4 / 5.0 GHz, ZigBee 2.4 GHz, ISM
- Antenna gain: 1.5 - 2.0 dBi
- VSWR: 2.5
- Impedance: 50 Ohm
- Operating temperature: -10 °C ~ 55 °C
- Colour: black
- Cable type: coaxial
- Cable type: 1.13
- Cable colour: black
- Cable diameter: ca. 1.13 mm
- Cable attenuation: 3.2 dB @ 2.4 GHz per meter
- Smallest bending radius: 4.5 mm
- Dimensions (LxWxH): ca. 20.00 x 7.00 x 1.90 mm
- Length incl. connectors (L): ca. 25 cm

## System requirements

- Device with one free MHF® I port

## Package content

- WLAN antenna

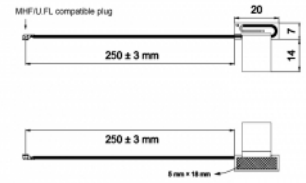
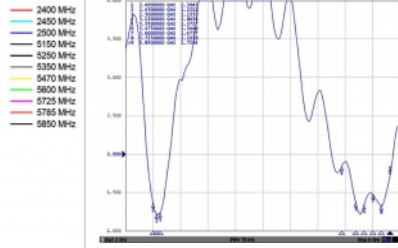
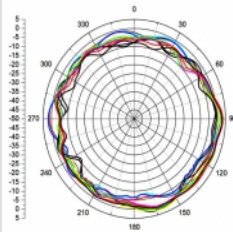
## Item no. 86270

EAN: 4043619862702

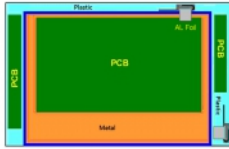
Country of origin: Taiwan, Republic of China

Package: Zip poly bag

Images



CCD-Antenna Installation Guide for Touch Panel



- Metal Shell
  - PCB
  - Metal/Material
  - Plastic/Material
- Plastic Insulator     ■ Aluminium Foil  
■ Aluminium Foil

1. The aluminium shell is often connected with grounding and connected with grounding.
2. The plastic insulator should be produced for the building outside.

General	
Suitable for indoor:	yes
Interface	
connector:	1 x MHF® I plug
Technical characteristics	
Frequency range:	2400 MHz - 2500 MHz 5150 MHz - 5875 MHz
Antenna gain:	1 dBi
Impedance:	50 Ω
Operating temperature:	-10 °C ~ 55 °C
VSWR:	2.5
Physical characteristics	
Antenna type:	CCD
Cable category:	coaxial
Cable type:	1.13
Cable attenuation:	3.2 dB @ 2.4 GHz per meter
Cable colour:	black
Cable diameter:	1.13 mm
Cable length incl. connector:	25 cm
Length:	20.00 mm
Width:	7.00 mm
Height:	1.90 mm
Smallest bending radius:	4.5 mm
Colour:	black