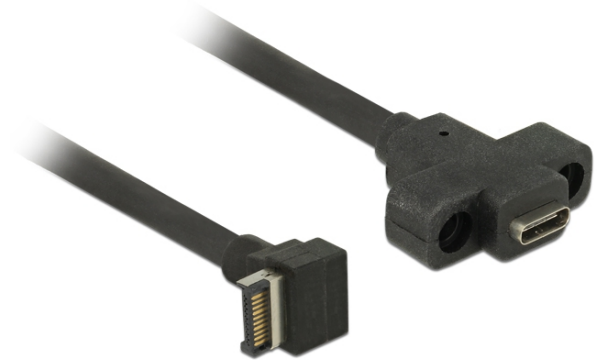


Delock Cable USB 3.1 Gen 2 key A 20 pin male > USB 3.1 Gen 2 USB Type-C™ female panel-mount 45 cm

Description

This cable by Delock can be connected to the internal USB 3.1 Gen 2 key A socket of a motherboard or a PCI Express card (e.g. [Delock_89603](#)) and can be used to extend a USB connection. The USB Type-C™ connector can be attached with two screws, e.g. on a slot bracket or a chassis with the corresponding recess. In this way, it is possible to install a USB port in an easily accessible position.



ca. 45 cm

Specification

- Connectors:
 - 1 x SuperSpeed USB 10 Gbps (USB 3.1 Gen 2) key A 20 pin male 90° angled >
 - 1 x SuperSpeed USB 10 Gbps (USB 3.1 Gen 2) USB Type-C™ female
- Two mounting holes for screws, spacing 20 mm, with M3 thread
- Cable gauge:
 - 28 + 30 AWG data line
 - 26 + 28 AWG power line
- Cable diameter: ca. 5 mm
- Data transfer rate up to:
 - SuperSpeed USB 10 Gbps,
 - SuperSpeed USB 5 Gbps,
 - Hi-Speed 480 Mbps,
 - Full-Speed 12 Mbps,
 - Low-Speed 1.5 Mbps
- Length incl. connectors: ca. 45 cm

System requirements

- PC with a free USB 3.1 Gen 2 key A interface

Package content

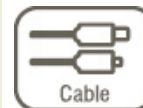
- USB cable

Item no. 85326

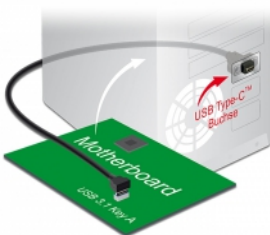
EAN: 4043619853267

Country of origin: China

Package: • Zip poly bag



Images



Interface	
Connector 1:	1 x USB 3.1 Gen 2 key A 20 pin male
Connector 2:	1 x USB 3.1 Gen 2 Type-C™ female
Technical characteristics	
Data transfer rate:	SuperSpeed USB 10 Gbps
Physical characteristics	
Cable diameter:	5 mm
Conductor gauge:	28 AWG data line
	30 AWG data line
	26 AWG power line
	28 AWG power line
Length:	45 cm