

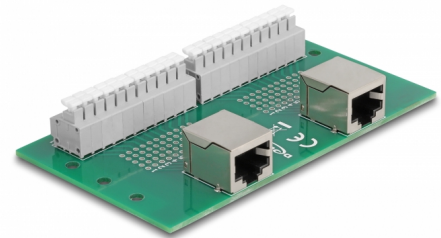
Delock RJ50 2 x female to 2 x Terminal Block with push-button for DIN rail

Description

This adapter by Delock can be used to connect various control and measuring devices. Strands with stripped ends can be connected via the terminal block toolfree.

DIN rail mounting

With the clips included in the delivery content, the adapter can be attached to a 15 mm or 35 mm wide DIN rail.



Item no. 67014

EAN: 4043619670147

Country of origin: China

Package: Box

Specification

- Connectors:
2 x RJ50 jack
2 x 11 pin terminal block
- Pin assignment: 1:1
- Pitch: 3.81 mm
- Useable for a cable gauge from 24 to 12 AWG
- DIN rail mounting: 15 mm and 35 mm
- Operating temperature: -40 °C ~ 100 °C
- Dimensions (LxWxH): ca. 91 x 60 x 18 mm

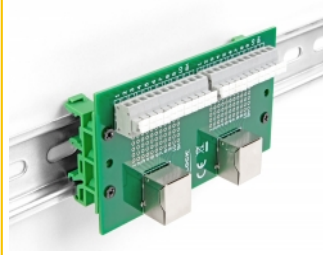
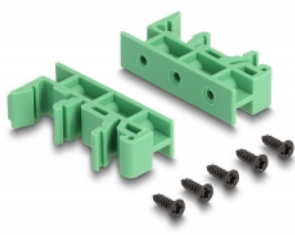
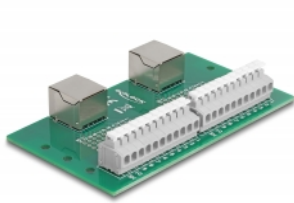
System requirements

- Two free RJ50 male
- 15 mm or 35 mm DIN rail

Package content

- Adapter
- 2 x DIN rail clip
- 5 x screws

Images



General

| | |
|-------------------------------|------------------------------------|
| Suitable for conductor gauge: | 24 - 12 AWG |
| Mounting type: | DIN rail mounting: 15 mm and 35 mm |

Interface

| | |
|--------------|---------------------------|
| Connector 1: | 2 x RJ50 jack |
| Connector 2: | 2 x 11 pin terminal block |

Technical characteristics

| | |
|------------------------|-----------------|
| Operating temperature: | -40 °C ~ 100 °C |
|------------------------|-----------------|

Physical characteristics

| | |
|-----------------|---------|
| Pitch distance: | 3.81 mm |
| Length: | 91 mm |
| Width: | 60 mm |
| Height: | 18 mm |