

Delock Adapter Sub-D 9 pin female to Terminal Block 10 pin with Enclosure

Description

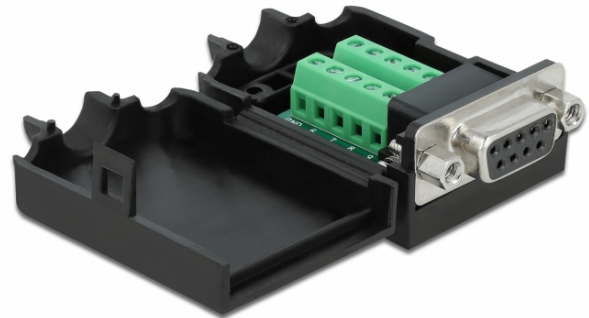
This terminal block adapter by Delock can be used to connect bare wires. Thus the adapter is not only convenient for special industry applications, but also for the hobby area, e.g. railway modelling.

Protection by enclosure

The plastic enclosure protects the PCB from dirt and damage.

Strain relief

The integrated strain relief fixes the cable in the enclosure.



Specification

- Connectors:
1 x serial Sub-D 9 female with nuts
1 x 10 pin terminal block
- Pin assignment: 1:1
- Pitch: 3.81 mm
- Useable for a cable gauge from 26 to 18 AWG
- Operating temperature: -20 °C ~ 105 °C
- Dimensions (LxWxH): ca. 51.8 x 34.4 x 21.0 mm

System requirements

- A free Sub-D 9 pin male

Package content

- Adapter
- 1 x strain relief
- 2 x locking screws

Item no. 66265

EAN: 4043619662654

Country of origin: CHINA

Package: • Zip poly bag



Images



Interface	
Connector 1:	1 x serial Sub-D 9 female with nuts
Connector 2:	1 x 10 pin terminal block
Technical characteristics	
Operating temperature:	-20 °C ~ 105 °C
Physical characteristics	
Pitch distance:	3.81 mm
Conductor gauge:	26 - 18 AWG
Length:	51.8 mm
Width:	34.4 mm
Height:	21.0 mm