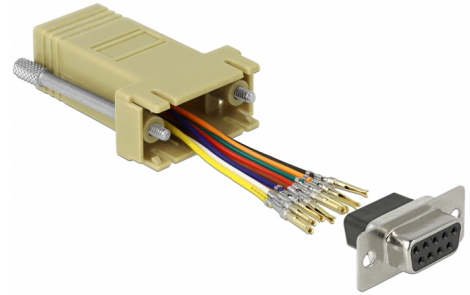


# Delock D-Sub 9 pin female to RJ45 female Assembly Kit grey

## Description

This adapter by Delock can be used to expand a serial interface by using an optional Cat.5 / 5e / 6 cable. Thereby one can set the pin assignment individually. Just plug the cable end into the desired hole of the connector and let it lock into the housing.



**Item no. 66164**

EAN: 4043619661640

Country of origin: China

Package: Zip poly bag

## Specification

- Connectors:
  - 1 x serial D-Sub 9 pin female >
  - 1 x RJ45 jack
- RJ45 interface assigned with 8 pins, serial interface individually assignable
- Serial female port with screws
- Dimensions incl. connector (LxWxH): ca. 52 x 34 x 16 mm
- Colour: grey

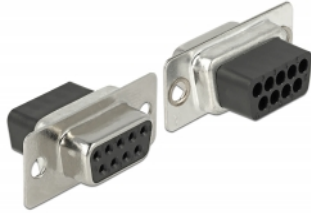
## System requirements

- A free D-Sub 9 pin male port or
- A free RJ45 plug

## Package content

- Adapter

## Images



PIN	Farbe / Color
1	● Blau / Blue
2	● Orange / Orange
3	● Schwarz / Black
4	● Rot / Red
5	● Grün / Green
6	● Gelb / Yellow
7	● Braun / Brown
8	○ Weiß / White

## Interface

connector:	1 x Sub-D 9 pin female
Connector 1:	1 x RJ45 jack

## Physical characteristics

Housing colour:	grey
Housing material:	Plastic
Length:	52 mm
Width:	34 mm
Height:	16 mm