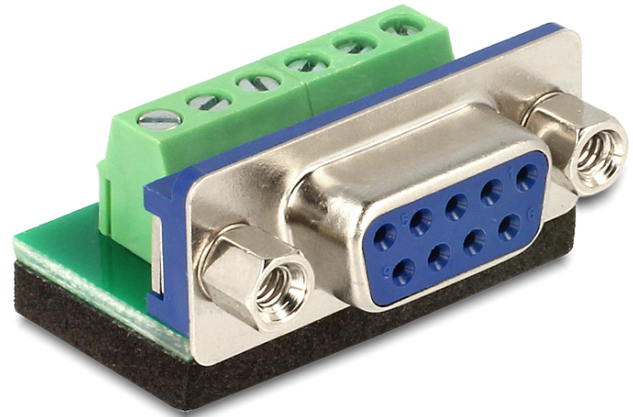


Delock Adapter Sub-D 9 pin female > Terminal block

Description

This Serial to Terminal Block adapter is made for special industrial application e.g. for connecting single wires with open cable heads.



Specification

- Connector:
 - Serial Sub-D 9 pin female
 - 6 pin Terminal Block
- Bottom side with isolating, antislip pad
- Pitch 3.81
- Dimension (LxWxH): ca. 32 x 22.5 x 11 mm

System requirements

- One free Sub-D 9 pin male port

Package content

- Adapter

Item no. 65498

EAN: 4043619654987

Country of origin: China

Package: • Zip poly bag



Images

